

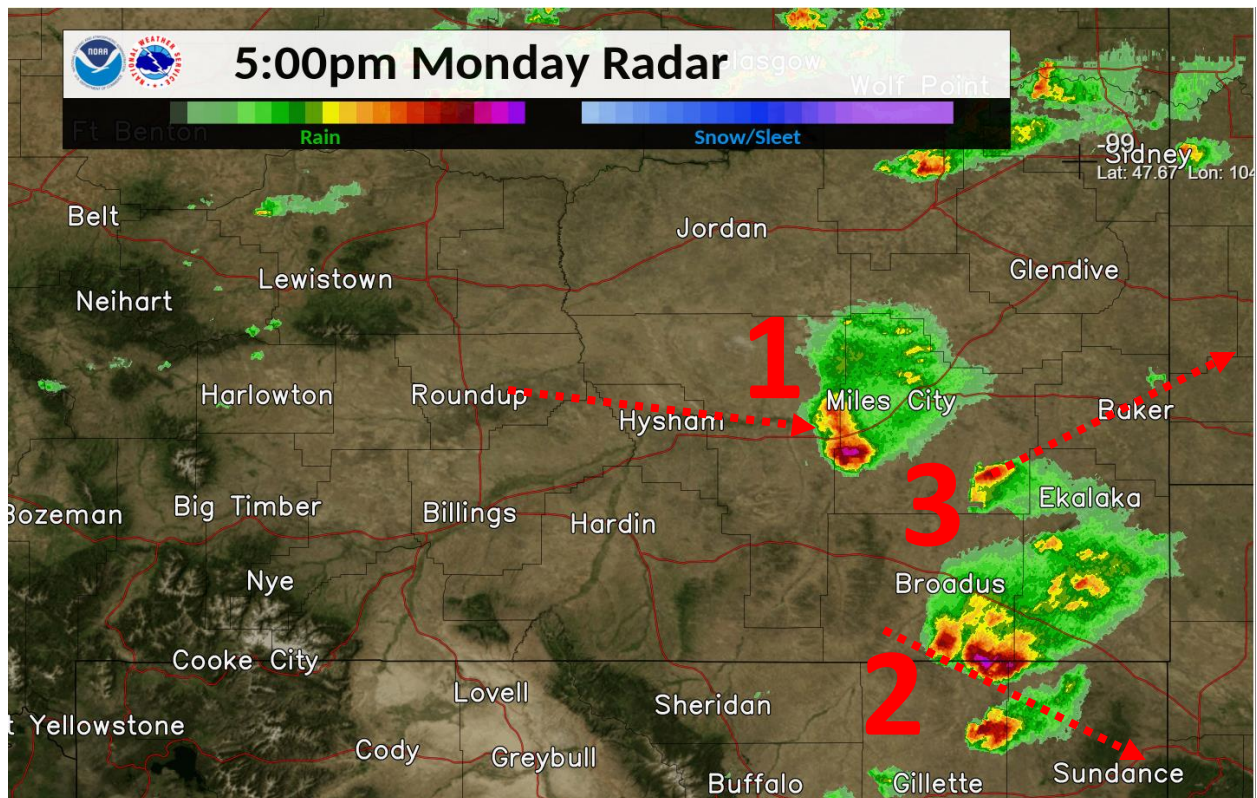
Severe Storms Summary for July 6-7, 2020

Atmospheric conditions were prime for a widespread severe event beginning July 6th and lasting until a cold front moved through on the 7th.

Around 2 pm MDT on July 6th, a storm began forming in Musselshell County and tracked through Treasure and northern Rosebud Counties over the next 2 hours (Storm 1 in image below). Hail up to the size of 2 inches was reported within the storm. It continued to track into southern Custer County, but no other reports were received. At about 4 pm, another storm formed 15 miles northwest of Biddle (Storm 2 in image below). This storm tracked southeast before exiting into Wyoming, dropping hail up to 2 inches. A third storm formed shortly after 5 pm in eastern Custer County (Storm 3 in image below). It tracked northeast into Fallon County, with reports of hail up to the size of golf balls.



John Ojeda Sanders, MT



Severe weather was expected again on July 7, 2020, which allowed for thunderstorm formation along a cold front. The main threats for the day were large hail and strong winds, along with a slight chance of tornado formation. The front moved through Park and Wheatland Counties around 2 pm, allowing single cell thunderstorm formation. It then merged into a line of storms that eventually moved into western North Dakota. The strongest storm formed in southwestern Golden Valley, tracking along the Musselshell River and dropping hail up to the size of tennis balls (Storm 1 in the image below). Another storm formed just to the northeast of Billings dropping hail up to 2 inches before merging with the cell in Musselshell County (Storm 2 in the image below). Once the storm merged, the main threat changed from

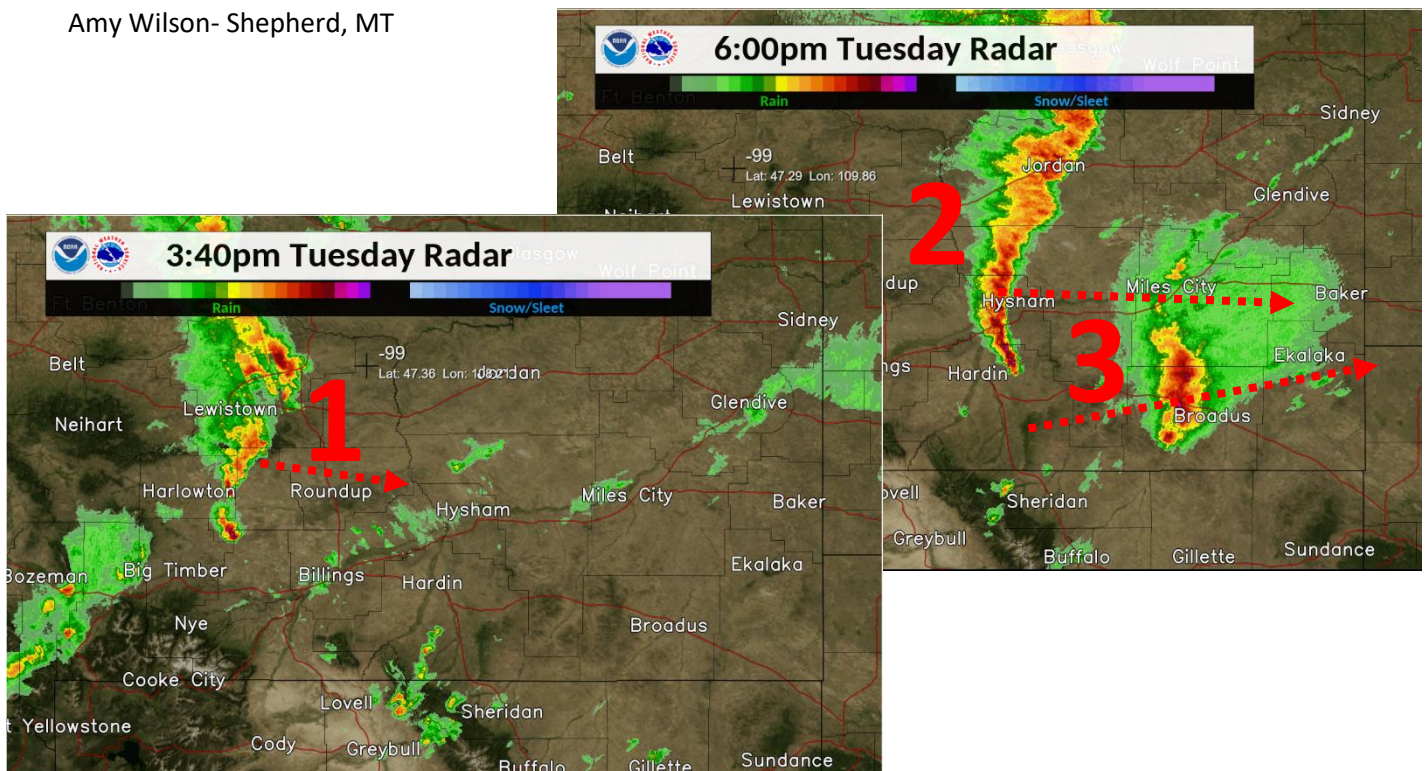


Linda Cosby- Lockwood, MT

hail to strong winds. As the storm moved into Northern Rosebud, Custer, and Fallon Counties, winds gusted at 55-60 mph with a 74 mph gust reported in Miles City. Around 4 pm storms began forming in Southern Big Horn County and moved through Powder River and Carter Counties, leaving behind a path of hail up to the size of golf balls and winds up to 60 mph (Storm 3 in the image below). Winds behind the front gusted briefly from 50-65 mph from Livingston through Billings.

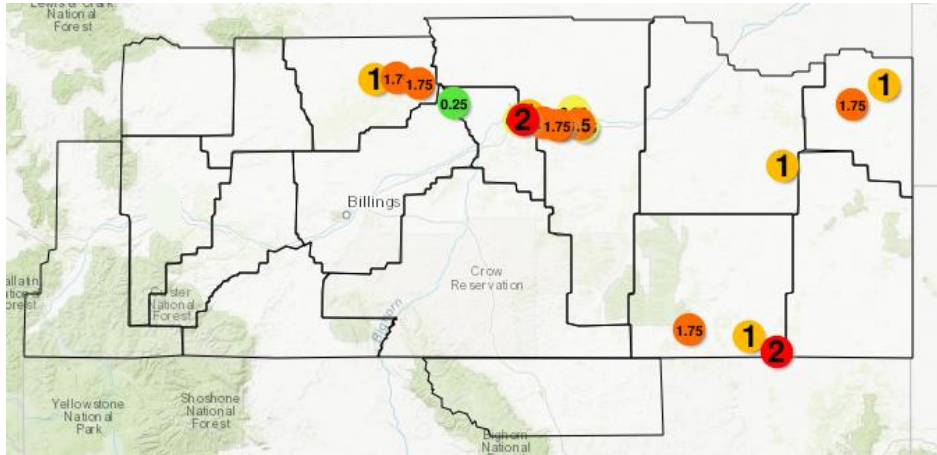


Amy Wilson- Shepherd, MT



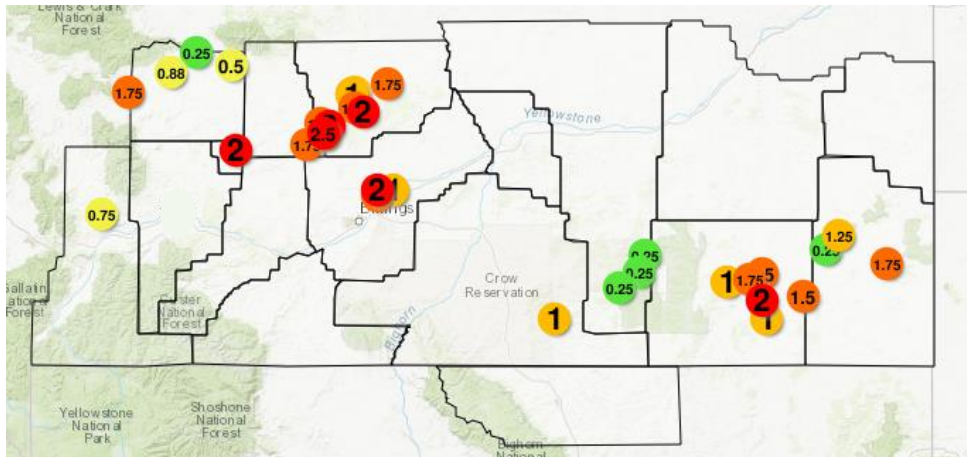
July 6, 2020 Summary

Hail (inches)



July 7, 2020 Summary

Hail (inches)



Wind (mph)

