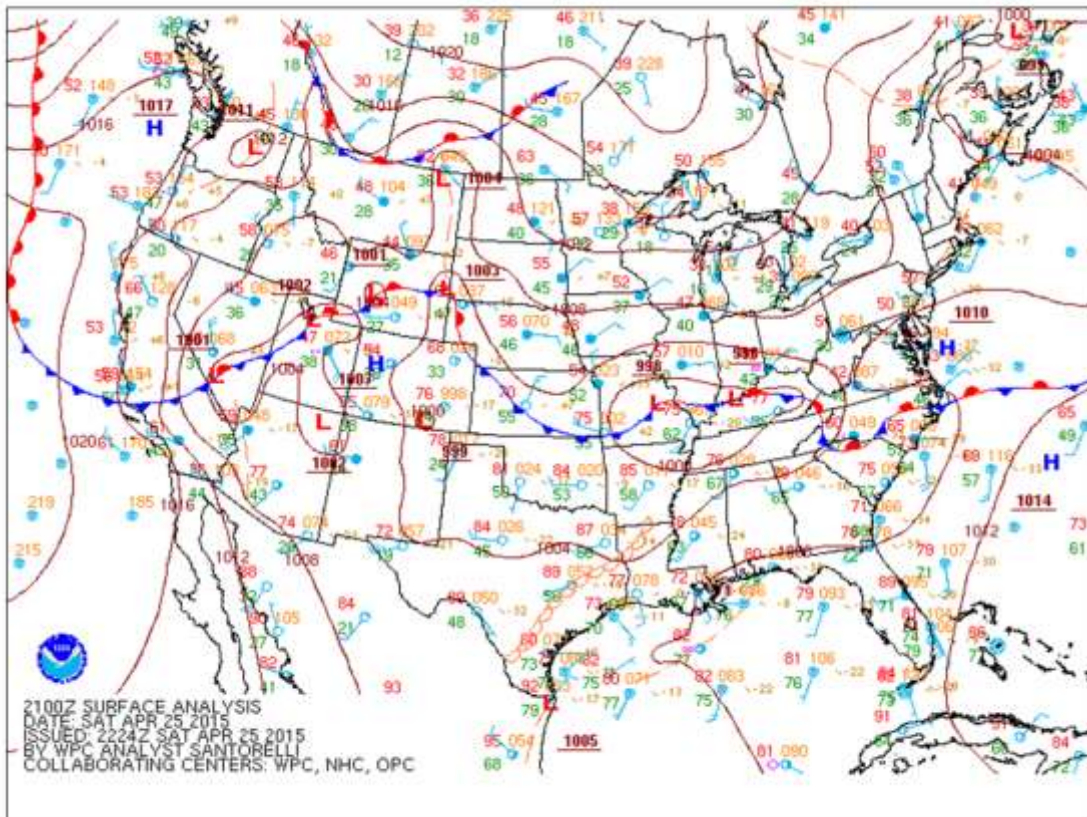
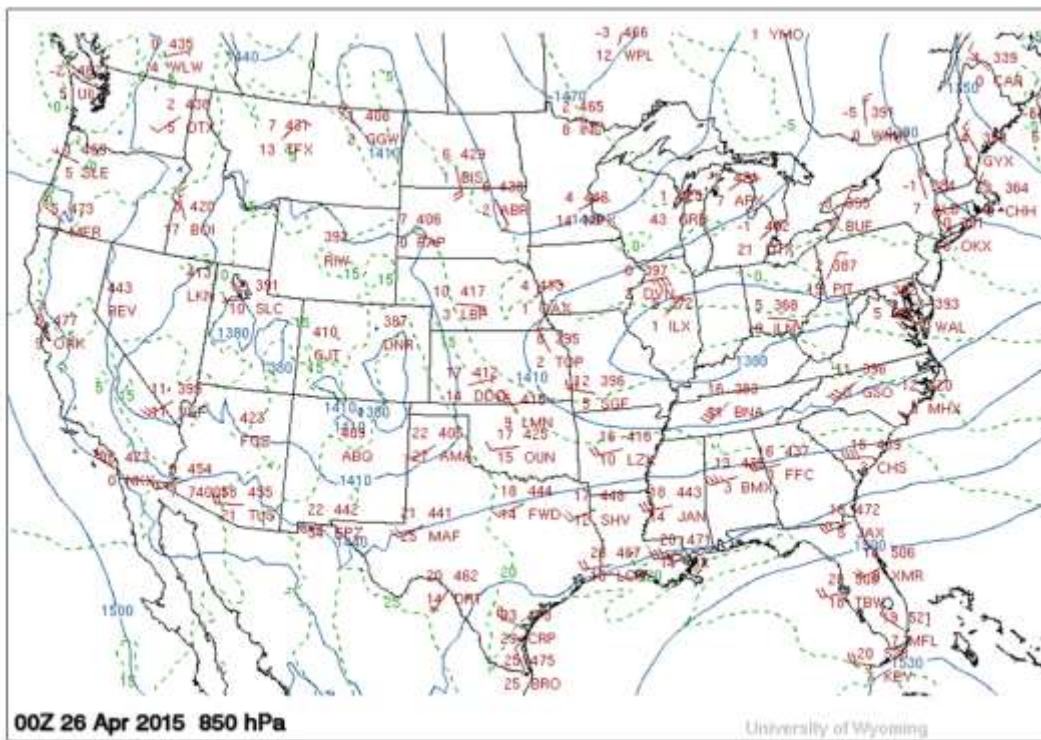
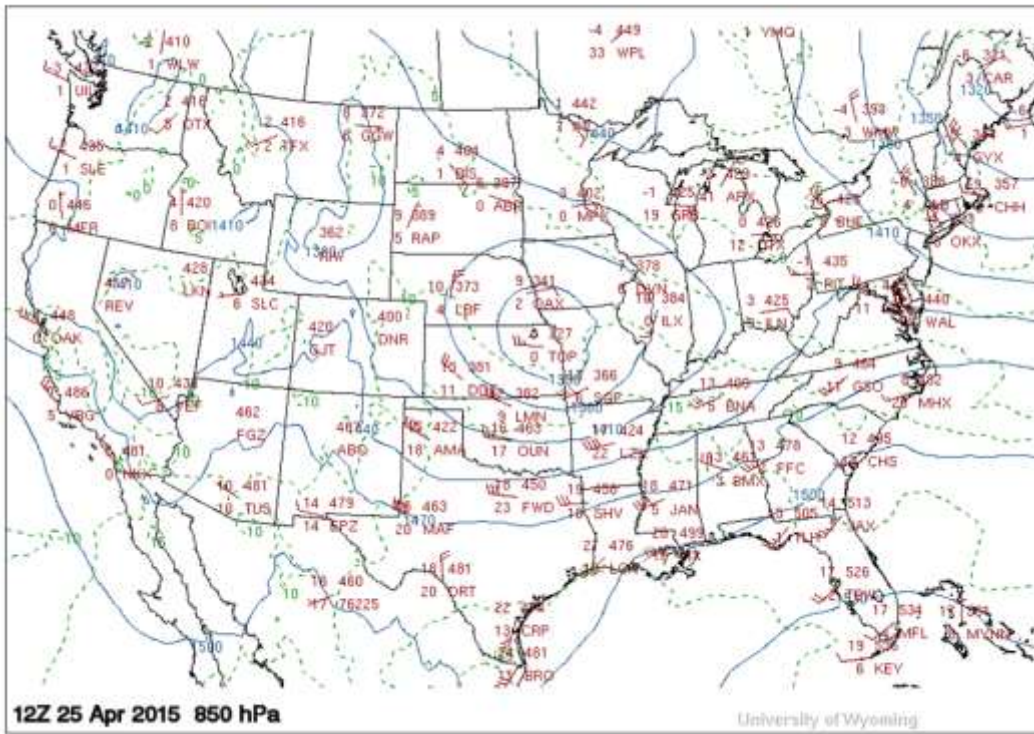


April 25, 2015, Damaging Wind Event

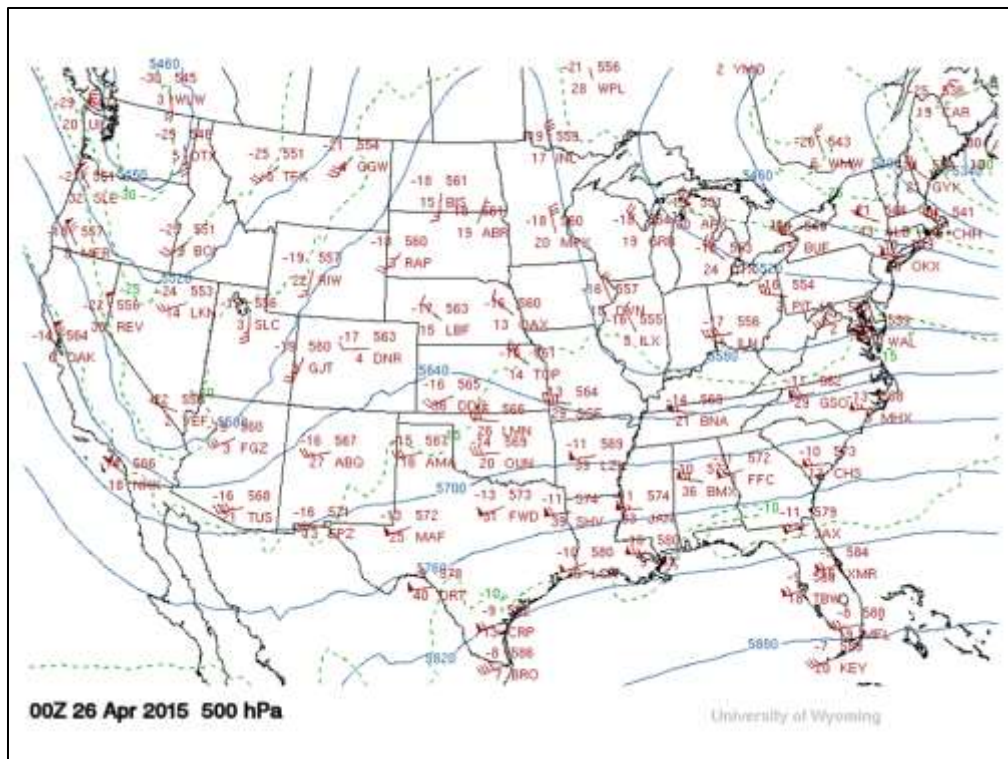
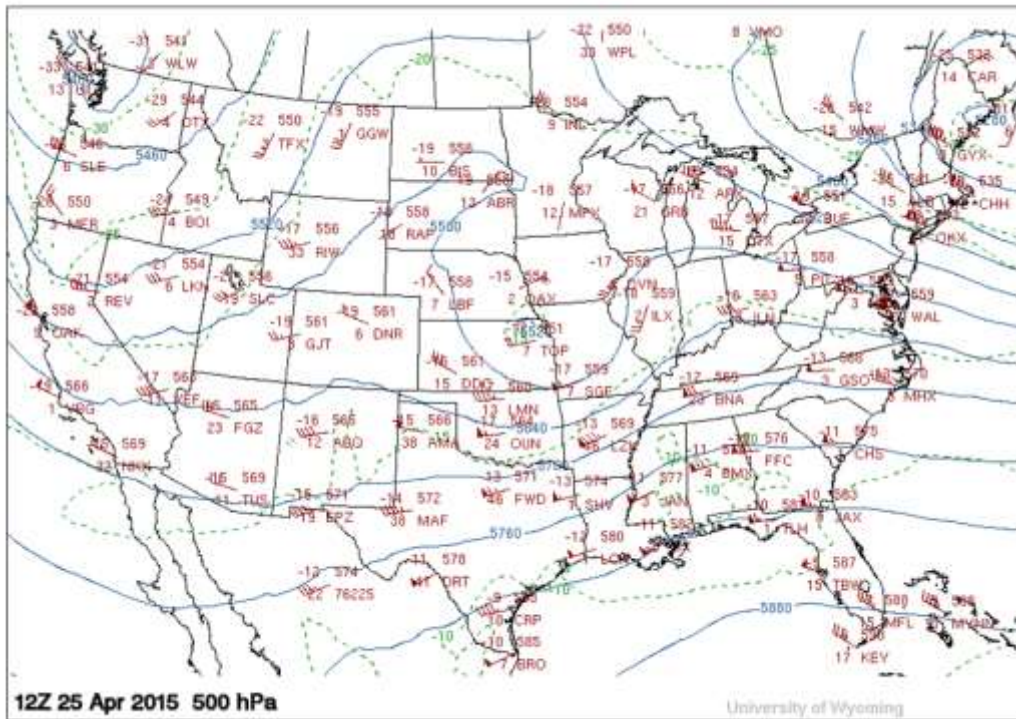
On Saturday, April 25, 2015, within an environment featuring sufficient instability, shear and helicity to support organized severe thunderstorms, an organized complex of thunderstorms known as a Quasi-Linear Convective System (QLCS) produced 50 reports of straight-line wind damage across southeast Georgia, especially in the Savannah area, between 8 and 10 pm EDT. Especially impressive, a bow echo produced a wind gust to 81 mph at the Savannah International Airport at 9:01 pm, and a gust to 91 mph was measured at a Georgia Port facility near Savannah.



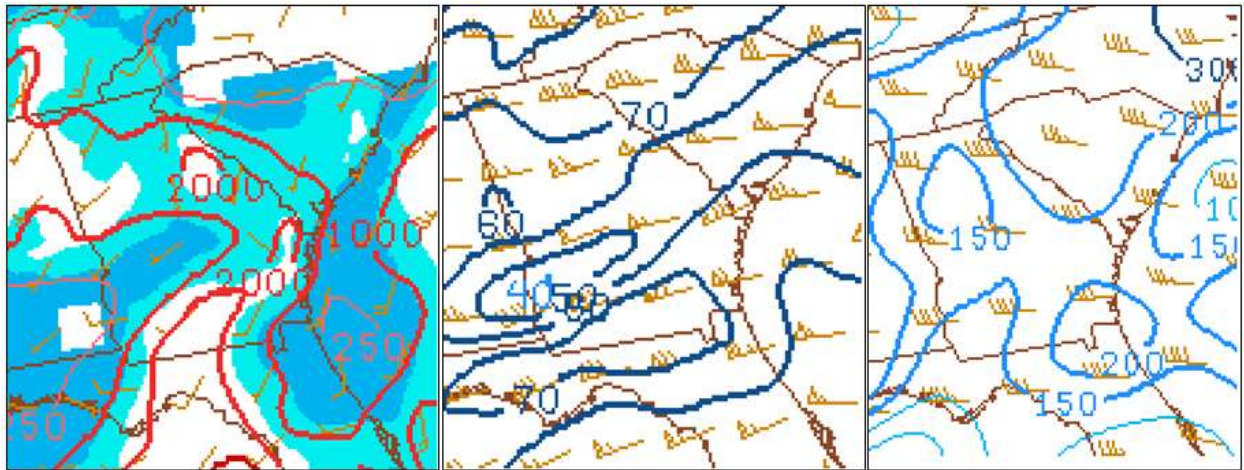
The WPC surface analysis for 21Z (5 pm EDT). The region was situated within a warm, moist air mass south of a stationary front.



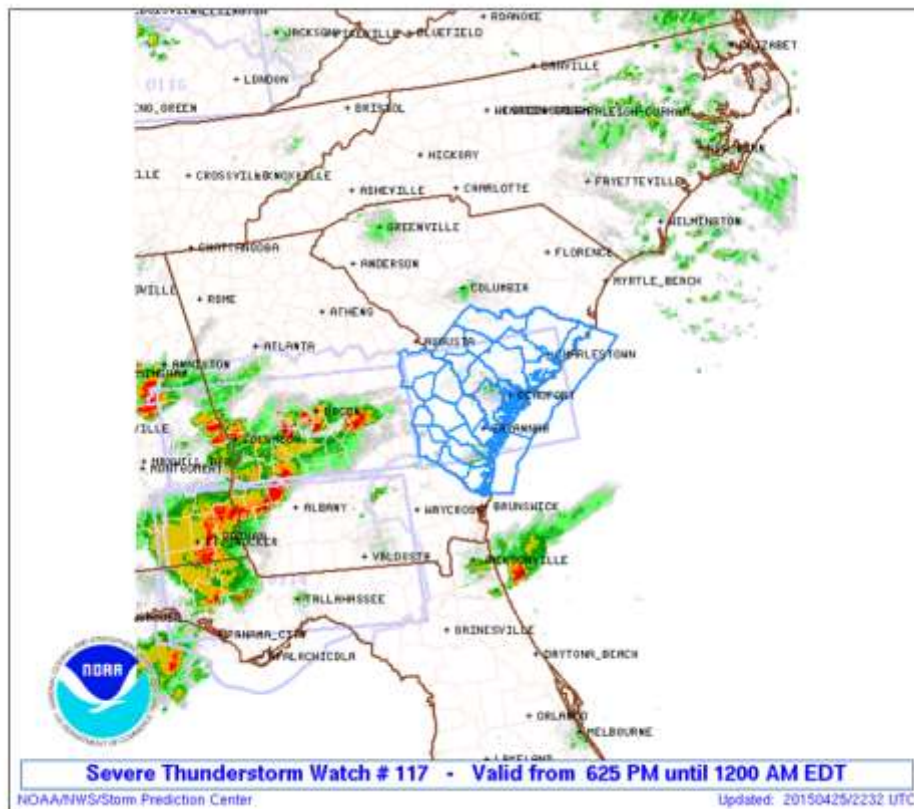
Morning and evening 850 mb observations and analysis. A belt of enhanced winds increased the potential for damaging winds over the Southeast.



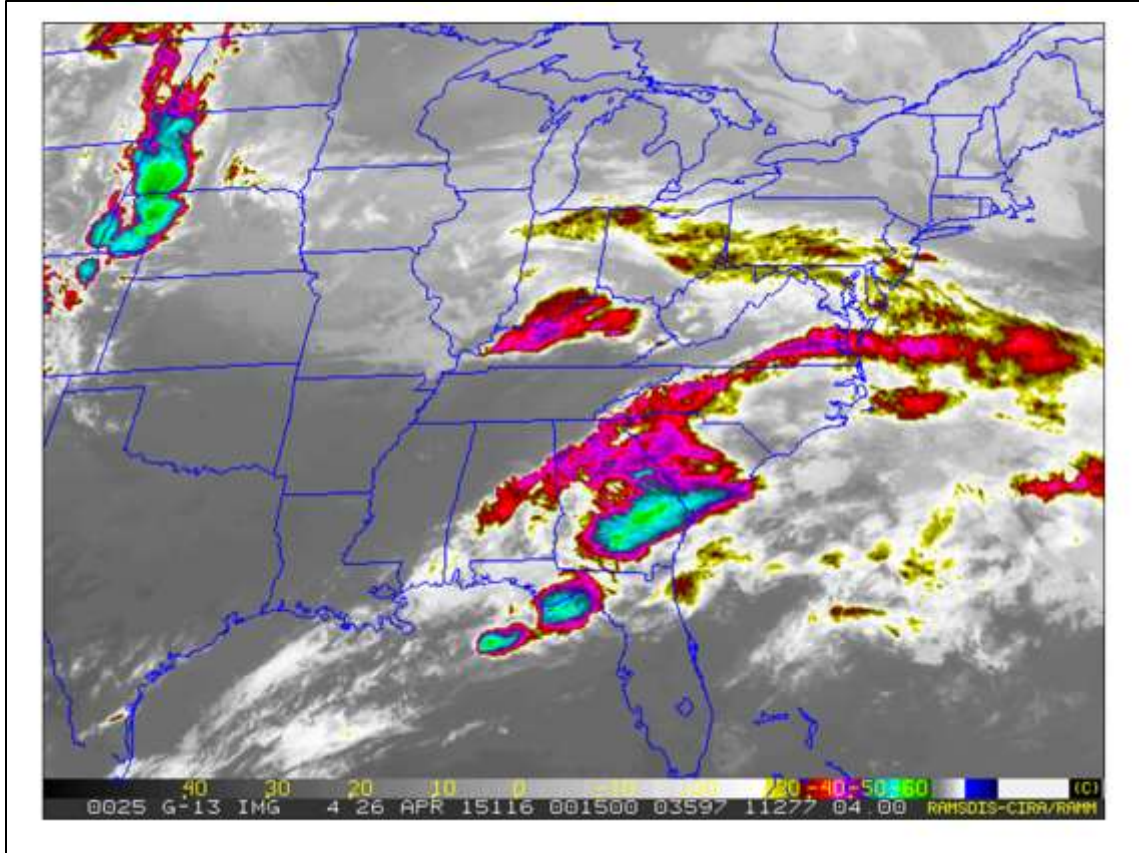
Morning and evening 500 MB observations and analysis. Note the belt of strong westerlies which greatly enhanced the potential for damaging straight-line winds across the Southeast.



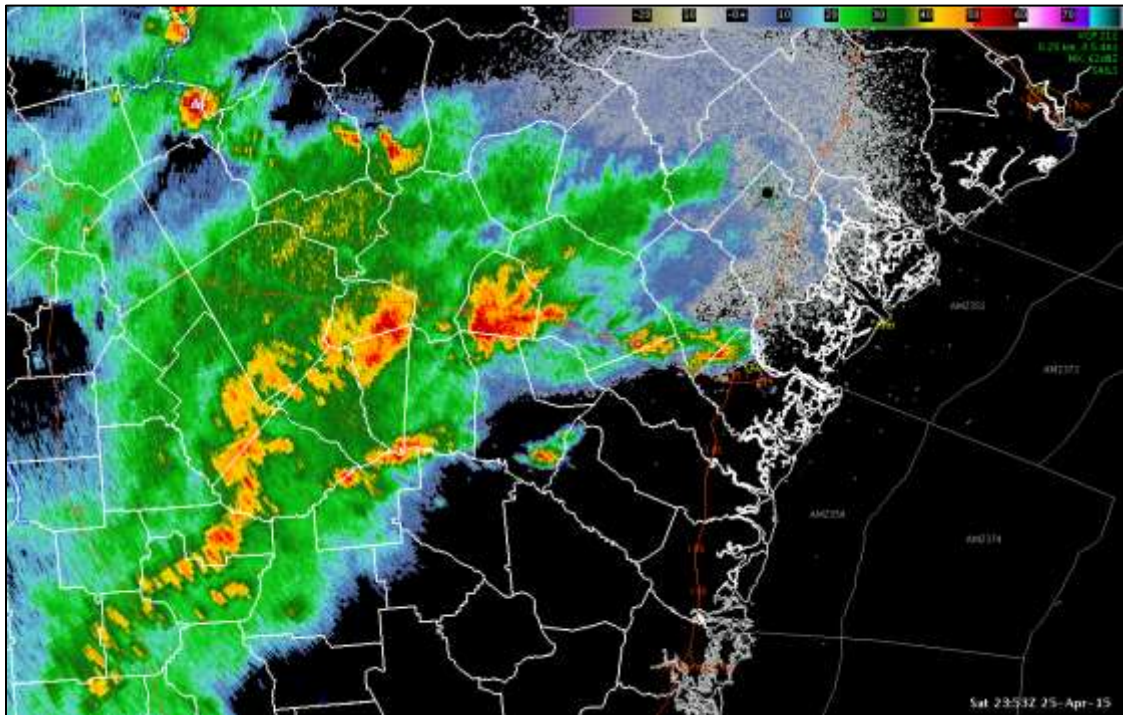
8 pm EDT) Storm Prediction Center Mesoanalysis depicting sufficient instability (left panel), shear (middle panel) and low-level helicity (right panel) to support organized severe thunderstorms with damaging winds.



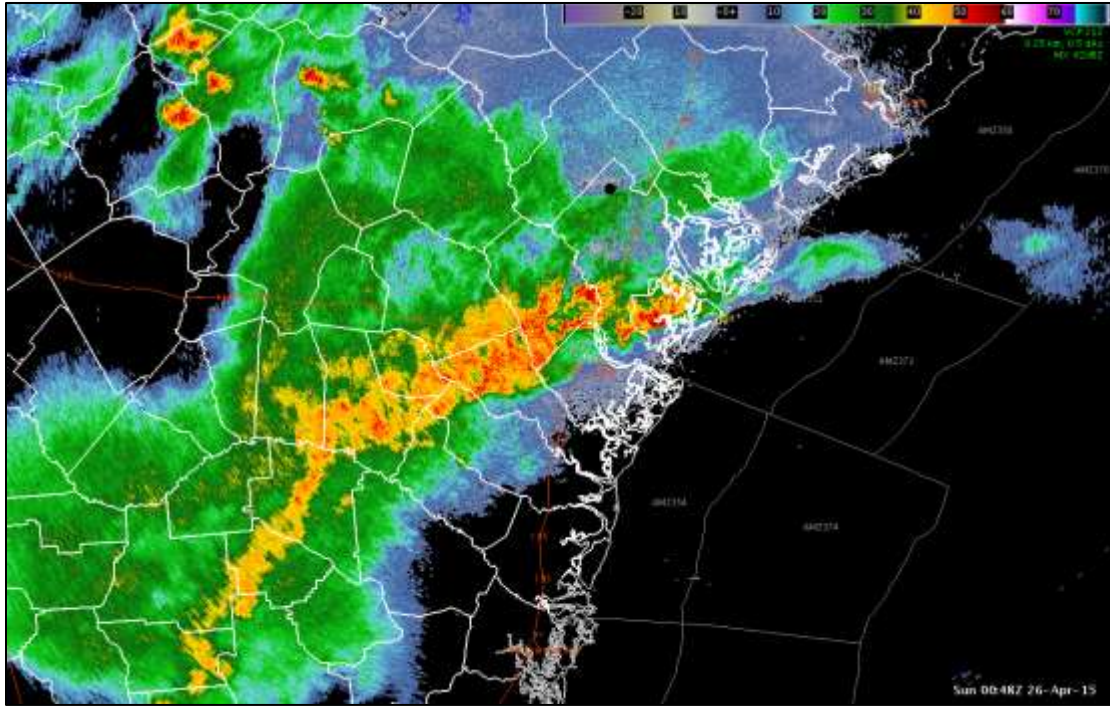
As a result of this environment, SPC issued Severe Thunderstorm Watch #117 which included all of our region and adjacent coastal waters.



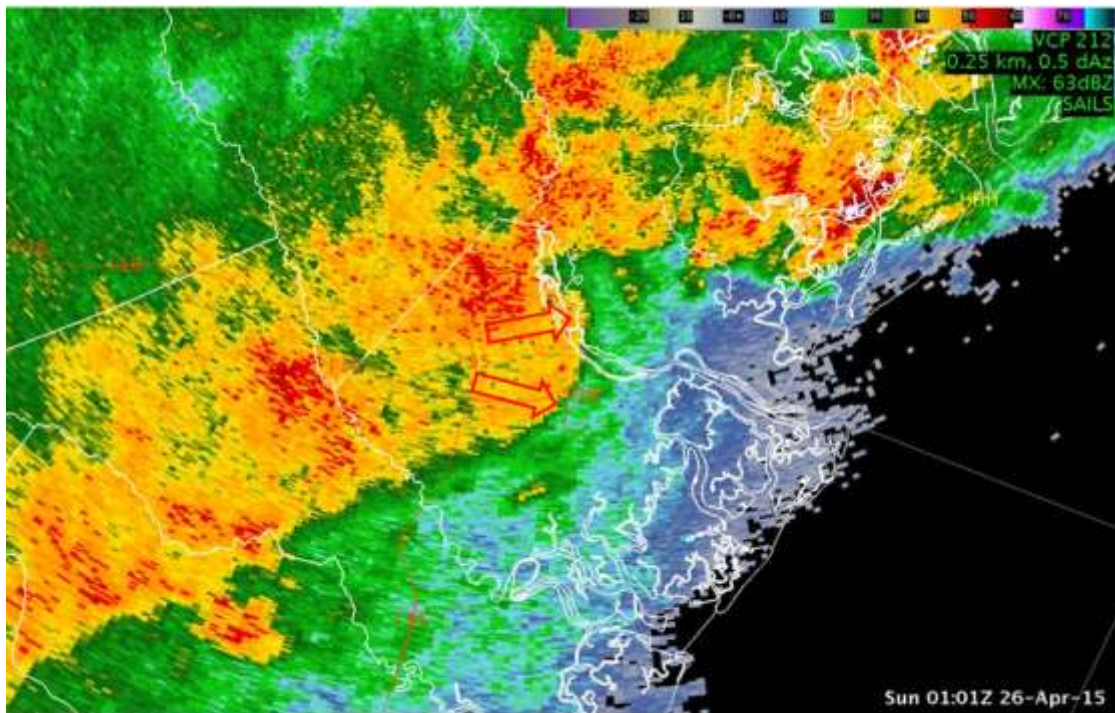
Infrared satellite image taken at 815 pm EDT.



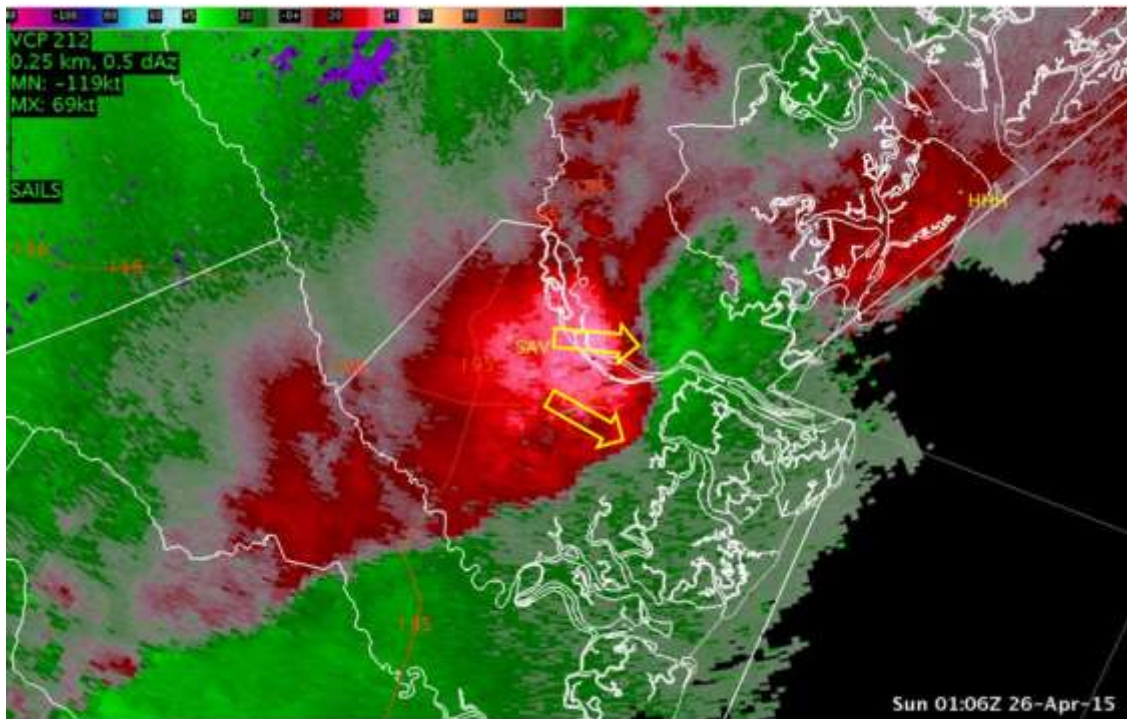
Just before 8 pm: severe thunderstorms expanding along I-16.



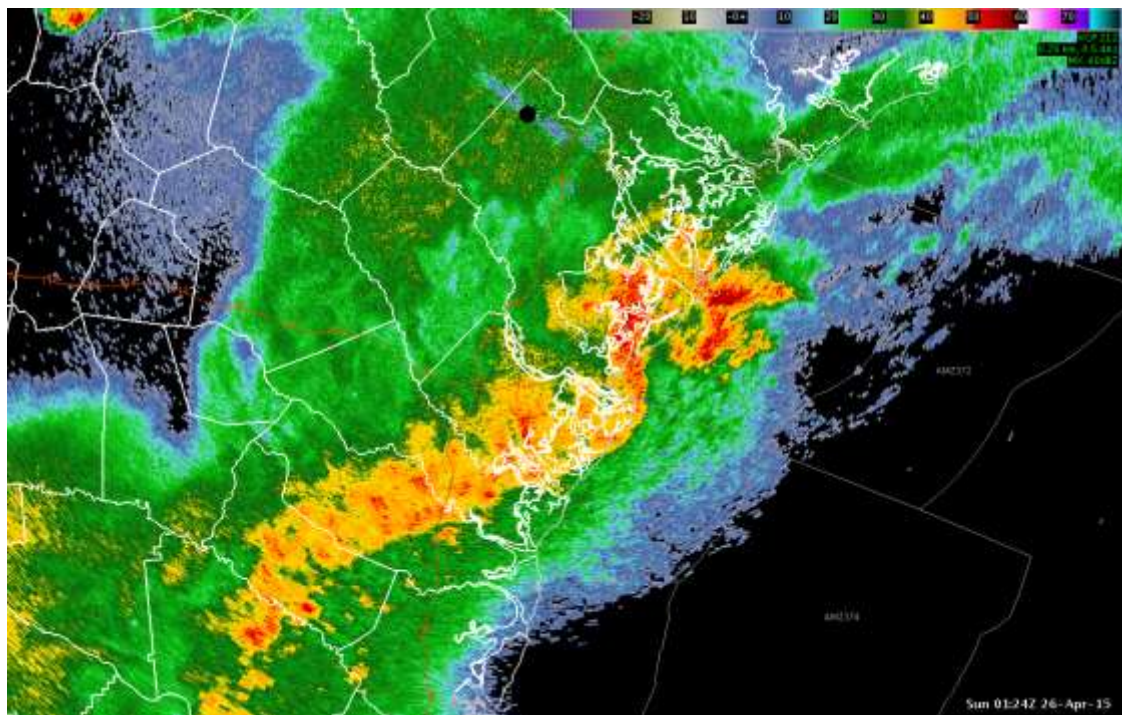
Just before 9 pm EDT: Organized severe thunderstorms approaching southeast Georgia communities between Savannah and Hinesville.



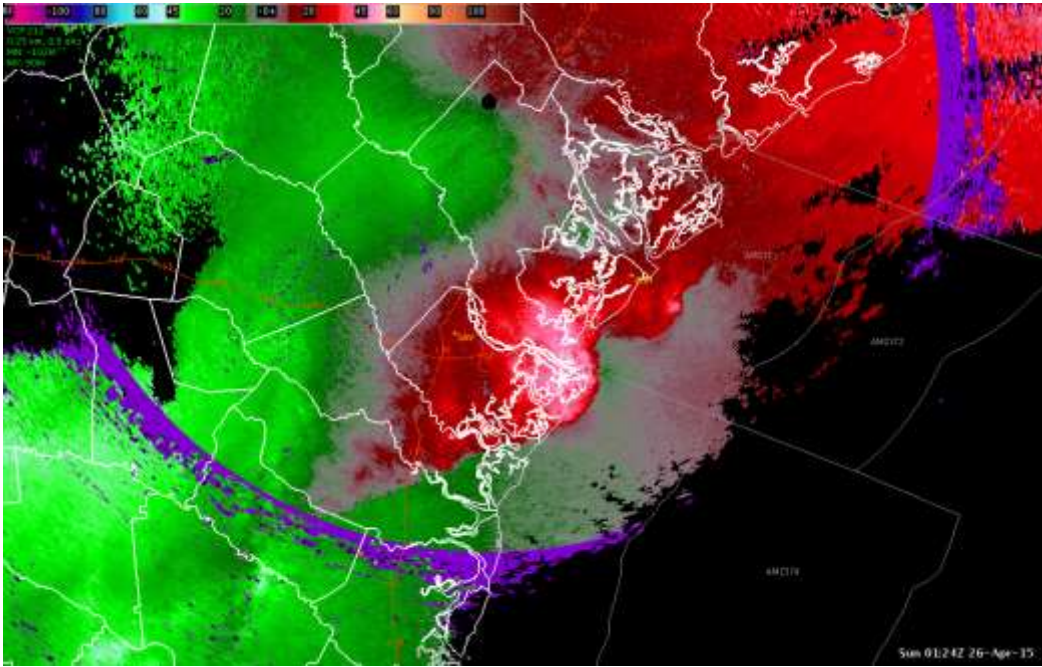
901 pm EDT: Bow echo produces 81 mph wind gust at Savannah International Airport.



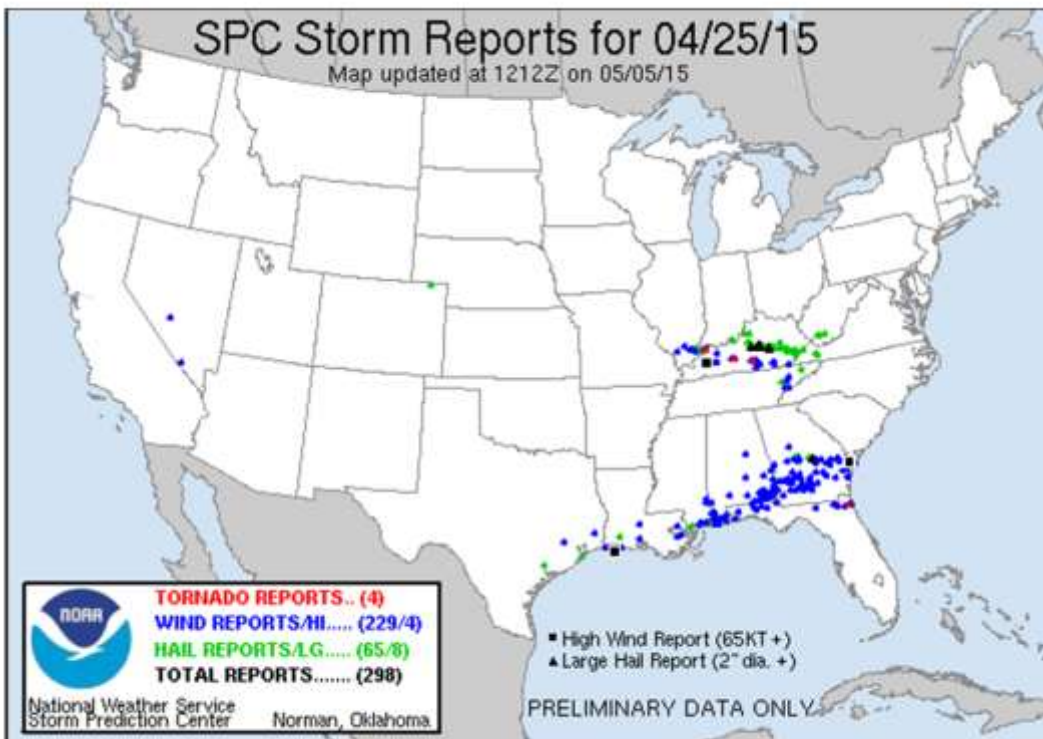
906 pm: Base velocity image depicts damaging winds sweeping through Savannah.



924 pm: Severe thunderstorms push through the coast. 60 mph winds on Tybee Island.



924 pm: Base velocity continued to show very strong outbound winds sweeping through the coast and heading into coastal waters.



SPC map of severe weather reports for April 19, 2015.

PRELIMINARY LOCAL STORM REPORT...SUMMARY
 NATIONAL WEATHER SERVICE CHARLESTON SC
 1243 AM EDT SUN APR 26 2015

..TIME...	...EVENT...	...CITY LOCATION...	...LAT.LON...
..DATE...MAG....	..COUNTY LOCATION..ST..	...SOURCE....
	..REMARKS..		

0756 PM	TSTM WND DMG	3 NE COBBTOWN	32.31N 82.09W
04/25/2015		CANDLER	GA 911 CALL CENTER

TREE DOWN ACROSS DONNELL RD. TIME ESTIMATED FROM RADAR

0812 PM	TSTM WND DMG	4 NNW DENMARK	32.34N 81.74W
04/25/2015		BULLOCH	GA 911 CALL CENTER

TREE DOWN NEAR INTERSECTION OF HIGHWAY 67 AND EMIT GROVE RD. TIME ESTIMATED FROM RADAR

0822 PM	TSTM WND DMG	3 NW BAY	32.26N 81.64W
04/25/2015		BULLOCH	GA 911 CALL CENTER

TREE DOWN NEAR THE INTERSECTION OF ARCOLA RD AND BLACK CREEK CH RD. TIME ESTIMATED FROM RADAR

0833 PM	TSTM WND DMG	1 SSW GORDONIA ALTAMAHA	32.08N 82.14W
04/25/2015		TATTNALL	GA 911 CALL CENTER

TREE DOWN ACROSS HUTCHESON RD

0835 PM	TSTM WND DMG	1 S REIDSVILLE	32.08N 82.12W
04/25/2015		TATTNALL	GA 911 CALL CENTER

TREE DOWN ON HOUSE ON 100 BLOCK SMITH AVE

0843 PM	TSTM WND DMG	1 SSE GUYTON	32.32N 81.39W
04/25/2015		EFFINGHAM	GA 911 CALL CENTER

MULTIPLE TREES DOWN ACROSS ROADS ON SOUTH SIDE OF GUYTON

0845 PM	TSTM WND DMG	2 E EDEN	32.17N 81.35W
04/25/2015		EFFINGHAM	GA COUNTY OFFICIAL

TREES AND POWER LINES DOWN NEAR THE INTERSECTION OF ROEBLING RD AND RT 17

0847 PM	TSTM WND DMG	3 SE BAY	32.20N 81.56W
04/25/2015		BRYAN	GA 911 CALL CENTER

TREE DOWN ON HIGHWAY 119 NEAR THE BULLOCH COUNTY BORDER.

0848 PM TSTM WND DMG 2 ENE EDEN 32.19N 81.36W
04/25/2015 EFFINGHAM GA 911 CALL CENTER

NUMEROUS TREES DOWN ON POWER LINES AND ACROSS ROADS
AROUND EDEN

0852 PM TSTM WND DMG 2 SW BLOOMINGDALE 32.11N 81.32W
04/25/2015 CHATHAM GA EMERGENCY MNGR

TREES WERE BLOWN DOWN AT SCATTERED LOCATIONS ALONG
BLOOMINGDALE ROAD BETWEEN THE INTERSTATE 16 INTERCHANGE
AND PINE BARREN ROAD. TIME WAS ESTIMATED FROM RADAR
DATA.

0859 PM TSTM WND DMG 1 S MEINHARD 32.17N 81.21W
04/25/2015 CHATHAM GA SOCIAL MEDIA

TREE DOWN BLOCKING NORTHBOUND LANES OF INTERSTATE 95
NEAR GA TECH CAMPUS

0900 PM TSTM WND GST SAVANNAH AIRPORT 32.13N 81.20W
04/25/2015 M81 MPH CHATHAM GA ASOS

KSAV REPORTED PEAK WIND OF 70 KT....81 MPH

0900 PM TSTM WND DMG 2 N POOLER 32.14N 81.25W
04/25/2015 CHATHAM GA TRAINED SPOTTER

MULTIPLE TREES DOWN ON WYNDHAM RD IN THE FOREST LAKES
SUBDIVISION

0900 PM TSTM WND DMG 1 ESE PORT WENTWORTH 32.14N 81.16W
04/25/2015 CHATHAM GA PUBLIC

MULTIPLE TREES AND POWERLINES DOWN ON COLERAINE DR

0900 PM TSTM WND DMG 1 NNE POOLER 32.13N 81.24W
04/25/2015 CHATHAM GA SOCIAL MEDIA

MULTIPLE TREES DOWN...SOME NEWLY PLANTED...IN NEW
TANGIER OUTLET PARKING LOT. AT LEAST ONE TREE ON CAR

0900 PM TSTM WND DMG 1 NNW MONTEITH 32.19N 81.19W
04/25/2015 CHATHAM GA EMERGENCY MNGR

TREES WERE BLOWN DOWN ONTO INTERSTATE 95 BETWEEN MILE
MARKERS 106 AND 109. TIME WAS ESTIMATED FROM RADAR DATA.

0900 PM TSTM WND DMG 1 NW POOLER 32.12N 81.25W
04/25/2015 CHATHAM GA TRAINED SPOTTER

MULTIPLE TREES DOWN ON HOUSES AND POWER LINES NEAR
CLIFF DR IN POOLER

0901 PM TSTM WND DMG 1 S PORT WENTWORTH 32.14N 81.18W
04/25/2015 CHATHAM GA EMERGENCY MNGR

TWO TREES WERE BLOWN DOWN ALONG STATE ROUTE 21 BETWEEN GULFSTREAM ROAD AND GRANGE ROAD. TIME WAS ESTIMATED FROM RADAR DATA.

0901 PM TSTM WND DMG PORT WENTWORTH 32.15N 81.18W
04/25/2015 CHATHAM GA EMERGENCY MNGR

MULTIPLE TREES WERE BLOWN DOWN IN THE PORT WENTWORTH VICINITY. TIME WAS ESTIMATED FROM RADAR DATA.

0902 PM TSTM WND DMG GARDEN CITY 32.10N 81.17W
04/25/2015 CHATHAM GA EMERGENCY MNGR

MULTIPLE TREES WERE BLOWN DOWN IN THE GARDEN CITY VICINITY. TIME WAS ESTIMATED RADAR DATA.

0903 PM TSTM WND DMG 2 SW SAVANNAH HISTORIC 32.06N 81.12W
04/25/2015 CHATHAM GA EMERGENCY MNGR

THUNDERSTORM WINDS BLEW A TREE ONTO A VEHICLE AT THE INTERSECTION OF OGEECHEE ROAD AND KOLLOCK STREET. TIME WAS ESTIMATED FROM RADAR DATA.

0903 PM TSTM WND DMG 2 SW SAVANNAH HISTORIC 32.05N 81.12W
04/25/2015 CHATHAM GA EMERGENCY MNGR

TREES WERE BLOWN DOWN AT SCATTERED LOCATIONS ALONG OGEECHEE ROAD BETWEEN 37TH STREET AND CORVAIR STREET. TIME WAS ESTIMATED FROM RADAR DATA.

0904 PM TSTM WND DMG 2 WNW SAVANNAH HISTORIC 32.09N 81.12W
04/25/2015 CHATHAM GA LAW ENFORCEMENT

*** 1 INJ *** TREE FELL DOWN ON A HOUSE ON WEST STREET CAUSING ONE INJURY TO A FEMALE.

0905 PM HAIL 1 N HILTON HEAD AIRPORT 32.24N 80.70W
04/25/2015 E0.75 INCH BEAUFORT SC PUBLIC

PUBLIC REPORTED PENNY SIZE HAIL ON NORTHERN END OF HILTON HEAD ISLAND. HAIL LASTED FROM 905 PM TO 910 PM.

0905 PM TSTM WND DMG 2 WSW SAVANNAH 32.04N 81.11W
04/25/2015 CHATHAM GA EMERGENCY MNGR

A TREE WAS BLOWN ONTO POWER LINES AT THE INTERSECTION OF BULL STREET AND THACKERY PLACE. TIME WAS ESTIMATED FROM RADAR DATA.

0908 PM TSTM WND DMG 1 NNW THUNDERBOLT 32.05N 81.06W
04/25/2015 CHATHAM GA EMERGENCY MNGR

TREES WERE BLOWN DOWN AT SCATTERED LOCATIONS ALONG
SKIDAWAY ROAD BETWEEN VIRGINIA AVENUE AND 41ST STREET.
TIME WAS ESTIMATED FROM RADAR DATA.

0909 PM TSTM WND DMG THUNDERBOLT 32.03N 81.05W
04/25/2015 CHATHAM GA SOCIAL MEDIA

TREE DOWN ON HOUSE. REPORT VIA FACEBOOK

0915 PM TSTM WND DMG 1 S WILMINGTON ISLAND 32.00N 80.98W
04/25/2015 CHATHAM GA EMERGENCY MNGR

A TREE WAS BLOWN DOWN ON WILMINGTON ISLAND ALONG NORTH
CROMWELL ROAD. TIME WAS ESTIMATED FROM RADAR DATA.

0924 PM MARINE TSTM WIND 4 NW TYBEE ISLAND 32.03N 80.90W
04/25/2015 M43 MPH CHATHAM GA C-MAN STATION

THUNDERSTORM WINDS GUSTED TO 37 KNOTS AT FORT PULASKI.

0924 PM TSTM WND DMG 2 SSE WALTHOURVILLE 31.75N 81.62W
04/25/2015 LONG GA 911 CALL CENTER

TREE DOWN ON TIBET RD

0925 PM TSTM WND GST 1 SSW TYBEE ISLAND 31.99N 80.85W
04/25/2015 M60 MPH CHATHAM GA MESONET

SOUTH TYBEE ISLAND WEATHERFLOW SENSOR

0931 PM TSTM WND GST 1 N TYBEE ISLAND 32.02N 80.85W
04/25/2015 M61 MPH CHATHAM GA MESONET

TYBEE NORTH WEATHERFLOW SENSOR

1006 PM TSTM WND DMG 1 NNW CRESCENT 31.52N 81.38W
04/25/2015 MCINTOSH GA 911 CALL CENTER

TREE DOWN ACROSS JOHNSON RD NEAR GA HWY 99

1012 PM TSTM WND DMG 1 NNE MERIDIAN 31.46N 81.37W
04/25/2015 MCINTOSH GA 911 CALL CENTER

TREE DOWN AT INTERSECTION OF SWAMP RD AND GA HWY 99

&&

\$\$