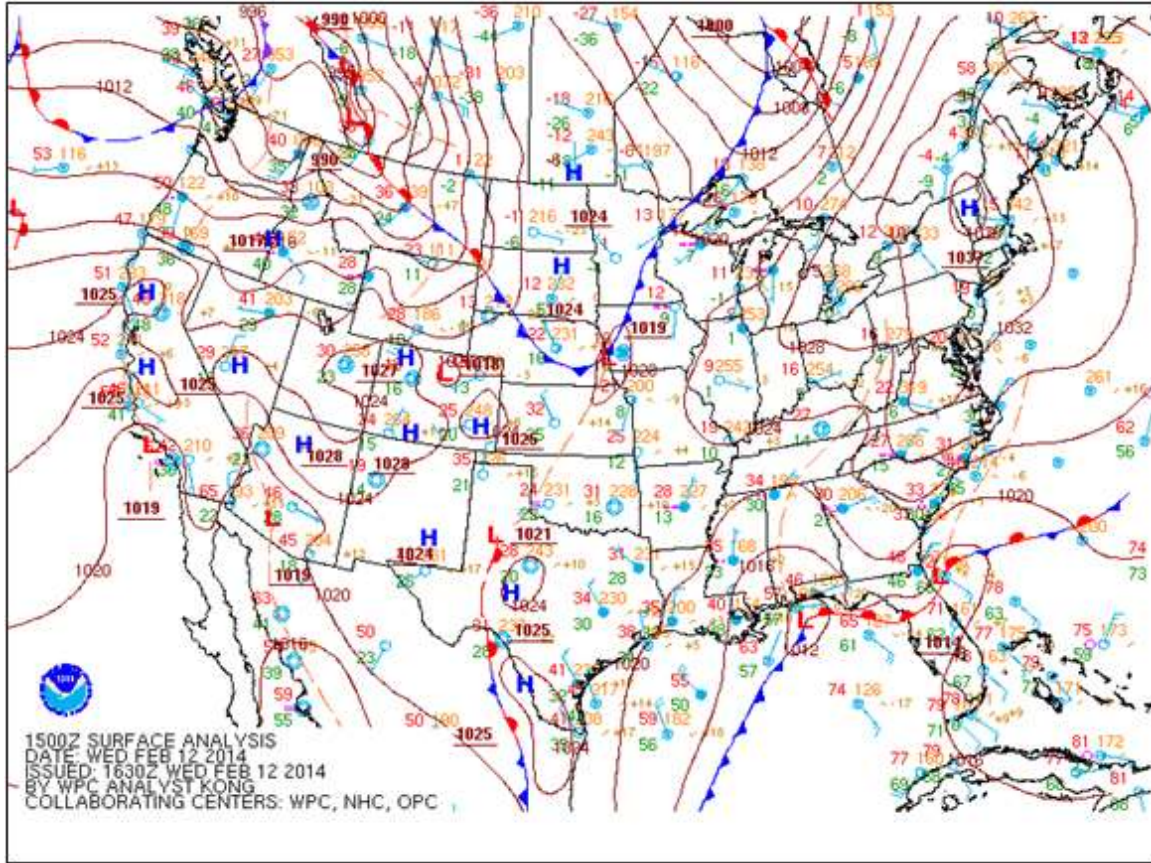


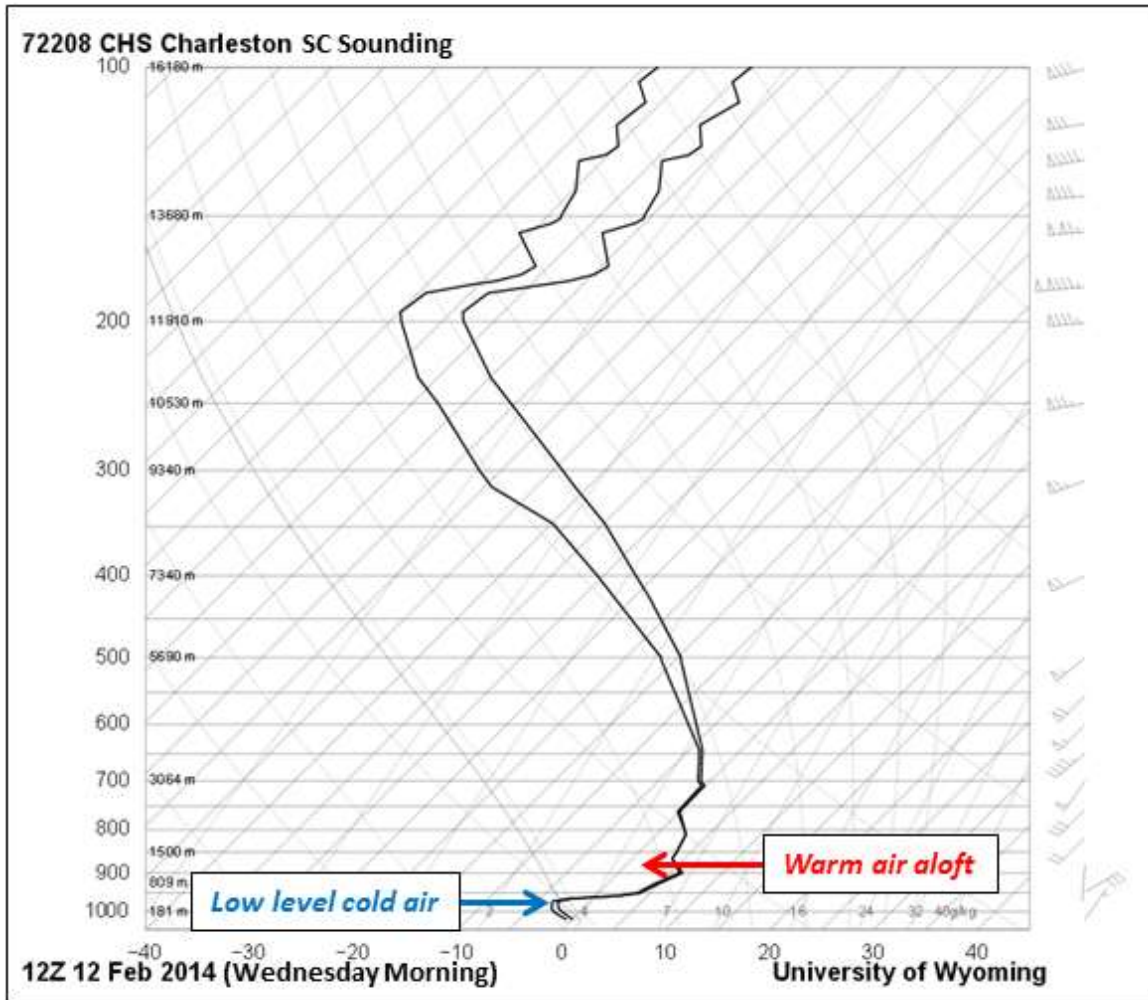
The February 11-13 Southeast South Carolina and Southeast Georgia Ice Storm: Second Ice Storm of the Season

Meteorological Event Summary

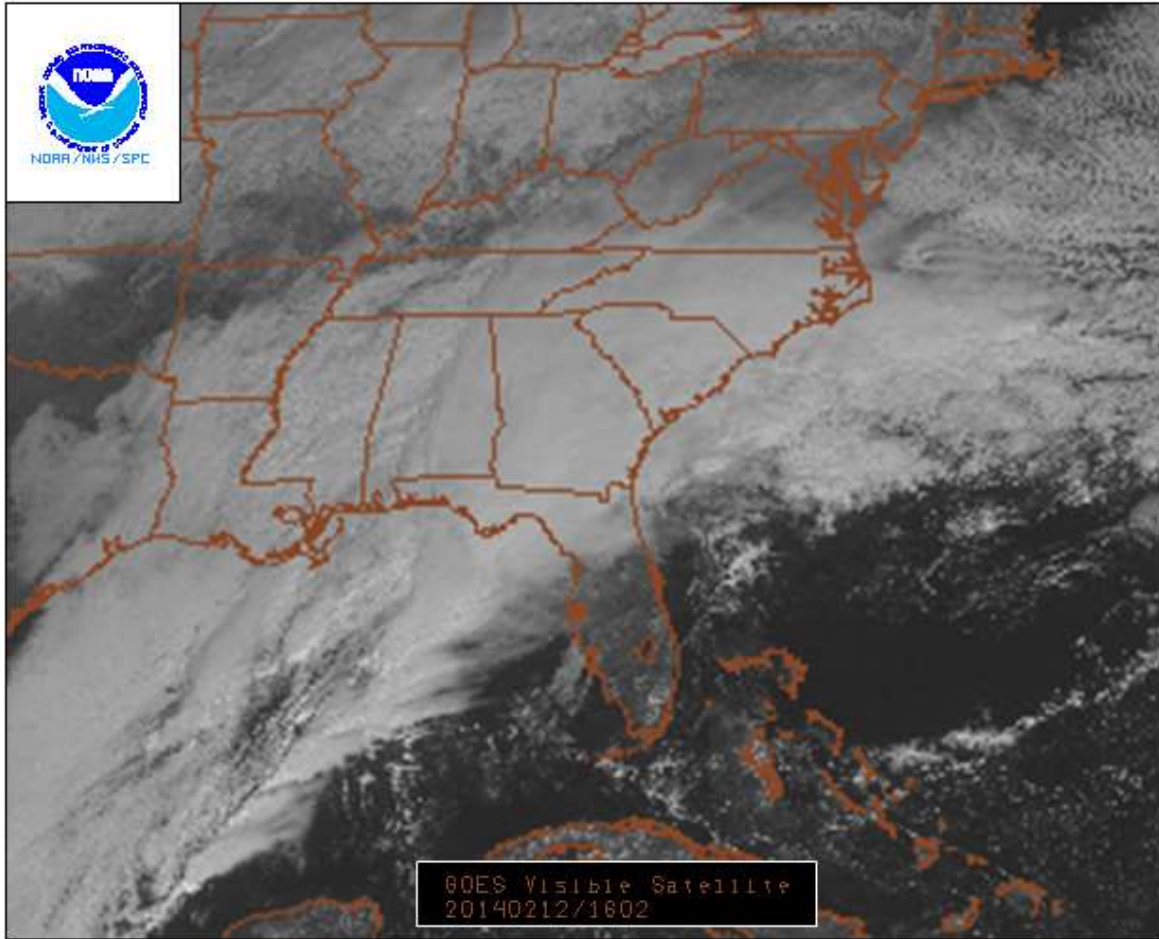
Low pressure tracked from the Gulf of Mexico off the southeast coast, producing widespread rainfall across the region. A wedge of high pressure provided shallow, cold air, supporting freezing rain at many locations except southeast Georgia locations along the I-95 corridor. Across many inland area, a major ice storm occurred, with 0.25 to 0.75 inch ice accumulations common and even a few 1.00 inch amounts reported. The storm extensively damaged trees and power lines. Many inland areas were without power for weeks after the storm, and South Carolina remained under a State of Emergency for several days. All told, this ice storm hit many areas harder than the January 2014 event. As was the case with the late January 2014 ice storm, the Ravenel Bridge was closed, this time for over 36 hours, negatively impacting motor vehicle travel across the greater Charleston SC area.



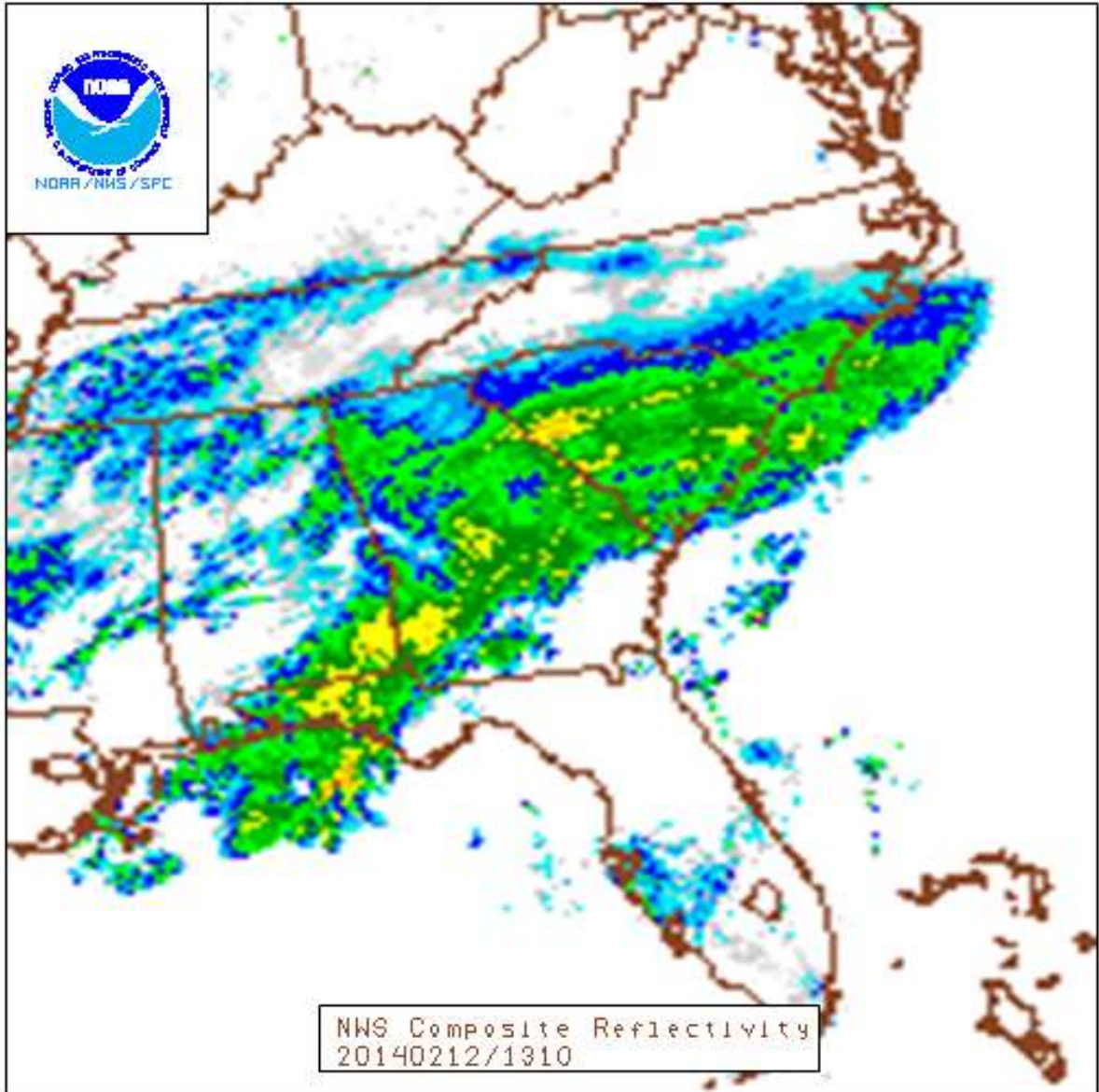
WPC surface analysis, valid midday Wednesday, February 12. An expansive, cold wedge of high pressure was anchored east of the Appalachians, while low pressure tracked east-northeast from northeast Florida to the northern Gulf of Mexico.



The Charleston, SC upper air sounding launched Wednesday morning revealed a classic freezing rain profile. Snow melted within the layer of warm air measured above the surface, the rain froze upon contact with bridges, trees, power lines and other surfaces located with the shallow layer of low-level subfreezing air.



Visible satellite imagery from midday Wednesday showed an extensive plume of deep, precipitation-producing clouds over the Southeast. With the cold wedge of surface high pressure in place over southeast Georgia and southern South Carolina, this regime produced a damaging ice storm especially across inland counties.

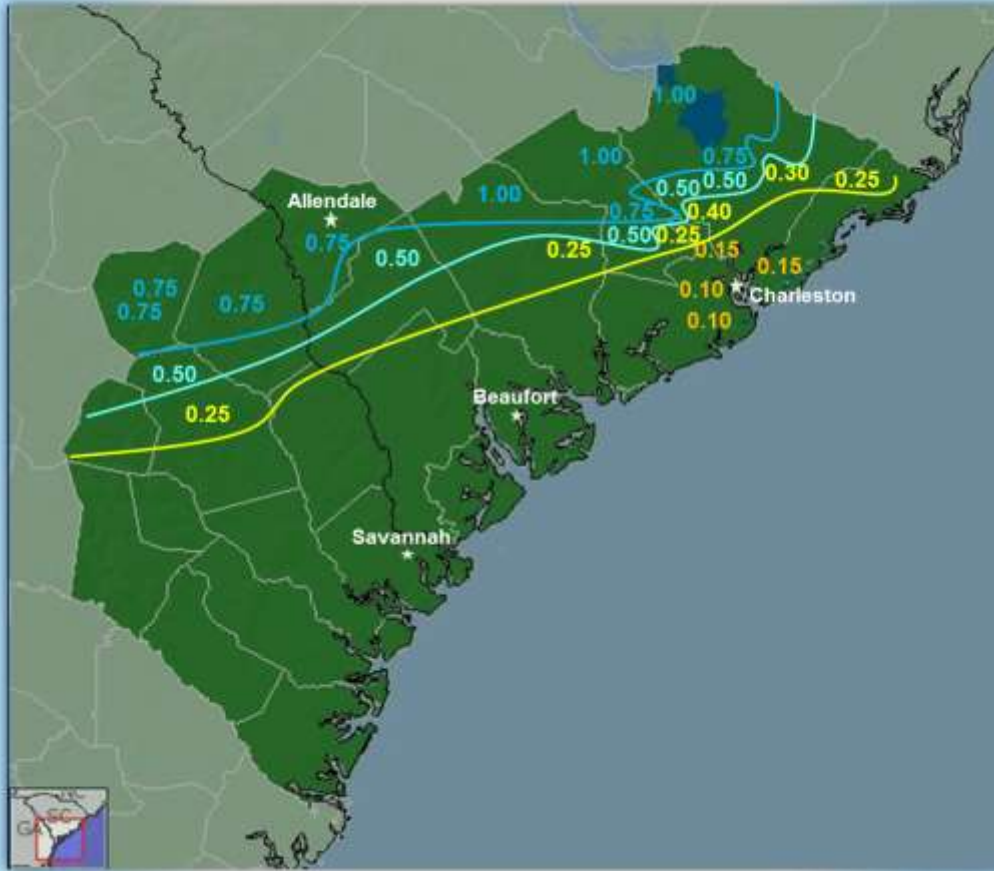


The regional radar image from Wednesday morning depicted widespread, overrunning precipitation, especially along and north of Interstate 16. Significant freezing rain was falling across inland sections of southern South Carolina and southeast Georgia.



Sylvania, GA

Preliminary Ice Accumulation Totals



Weather Forecast Office
Charleston, SC

weather.gov/chs | [@NWSCharlestonSC](https://twitter.com/NWSCharlestonSC)

GRAPHIC CREATED:
2/13/2014 9:39 AM



National Weather Service Office, North Charleston SC

PUBLIC INFORMATION STATEMENT

SPOTTER REPORTS

NATIONAL WEATHER SERVICE CHARLESTON SC

104 AM EST FRI FEB 14 2014

THE FOLLOWING ARE UNOFFICIAL OBSERVATIONS TAKEN BY AUTOMATED SURFACE OBSERVATION SYSTEMS /ASOS/...FIRE WEATHER REMOTE AUTOMATED WEATHER STATIONS /RAWS/...GEORGIA AUTOMATED MONITORING NETWORK STATIONS /GAEMN/...NOAA/S NATIONAL ESTUARINE RESEARCH RESERVE SYSTEM OBSERVATIONS /NERR/...NATIONAL DATA BUOY CENTER LOCATIONS /NDBC/ AND OTHER QUALITY CONTROLLED SENSORS FROM ACROSS SOUTHEAST SOUTH CAROLINA AND SOUTHEAST GEORGIA.

*****STORM TOTAL ICE*****

LOCATION	STORM TOTAL	TIME/DATE	COMMENTS
ICE	OF		
/INCHES/	MEASUREMENT		
GEORGIA			
...BULLOCH COUNTY...			
PORTAL	0.50	1145 AM 2/12	911 CALL CENTER
STATESBORO	0.25	1000 AM 2/12	FIRE DEPT/RESCUE
...JENKINS COUNTY...			
MILLEN	0.75	442 AM 2/13	911 CALL CENTER
5 S MILLEN	0.75	107 PM 2/12	TRAINED SPOTTER
...SCREVEN COUNTY...			
SYLVANIA	0.75	435 AM 2/13	PUBLIC
SOUTH CAROLINA			
...ALLENDALE COUNTY...			
ALLENDALE	0.75	333 AM 2/13	STORM TOTAL SO FAR.
...BERKELEY COUNTY...			
CROSS	1.00	851 AM 2/13	FIRE DEPT/RESCUE
MONCKS CORNER	0.75	350 PM 2/12	PUBLIC
1 WSW COLLEGE PARK	0.50	628 AM 2/13	NWS EMPLOYEE
1 WNW OLD SANTEE CAN	0.50	1200 PM 2/12	TRAINED SPOTTER
3 ENE SUMMERVILLE	0.40	1248 PM 2/12	ON DRIVEWAY.
3 N BONNEAU	0.30	130 PM 2/12	TRAINED SPOTTER
3 SSW BONNEAU	0.25	430 PM 2/12	TRAINED SPOTTER
3 NNW GOOSE CREEK	0.25	1245 PM 2/12	TRAINED SPOTTER
2 ENE LADSON	0.25	1027 AM 2/12	TRAINED SPOTTER
HUGER	0.25	1025 AM 2/13	TRAINED SPOTTER
CARNES CROSSROAD	0.25	304 PM 2/12	TREES DOWN
3 NNE GOOSE CREEK	0.20	1200 PM 2/12	NWS EMPLOYEE
7 SSE MONCKS CORNER	0.13	1242 PM 2/12	TRAINED SPOTTER
...CHARLESTON COUNTY...			
3 SSW SHADOWMOSS	0.30	1030 AM 2/12	NWS EMPLOYEE
1 W MCCLELLANVILLE	0.25	105 PM 2/12	LIMBS DOWN
LADSON	0.20	855 AM 2/12	TRAINED SPOTTER
1 ESE CHARLESTON AIR	0.15	649 AM 2/12	NWS OFFICE

2 W MOUNT PLEASANT	0.15	939 AM	2/12	BROADCAST MEDIA
2 SW SHADOWMOSS	0.10	913 AM	2/12	BROADCAST MEDIA
JOHNS ISLAND	0.10	645 AM	2/13	OTHER FEDERAL
3 E BOONE HALL PLANT	0.10	1259 PM	2/12	TRAINED SPOTTER
...COLLETON COUNTY...				
SMOAKS	1.00	733 AM	2/13	FIRE DEPT/RESCUE
COTTAGEVILLE	0.25	248 PM	2/12	TRAINED SPOTTER
...DORCHESTER COUNTY...				
HARLEYVILLE	1.00	856 AM	2/13	LAW ENFORCEMENT
1 SSE SUMMERSVILLE	0.75	356 AM	2/13	NWS EMPLOYEE
KNIGHTSVILLE	0.75	504 AM	2/13	PUBLIC
1 S SUMMERSVILLE	0.50	1230 PM	2/12	PUBLIC
2 SSE KNIGHTSVILLE	0.50	633 AM	2/13	NWS EMPLOYEE
1 E KNIGHTSVILLE	0.50	1250 PM	2/12	TRAINED SPOTTER
2 NNE ARCHDALE	0.25	250 PM	2/12	TRAINED SPOTTER
2 NNE MIDDLETON PLAC	0.25	113 PM	2/12	TRAINED SPOTTER
3 SE SUMMERSVILLE	0.25	111 PM	2/12	TRAINED SPOTTER
3 N ARCHDALE	0.25	500 PM	2/12	TRAINED SPOTTER
1 WSW ORCHARD HILL	0.20	330 PM	2/12	TRAINED SPOTTER
3 SW LADSON	0.19	924 AM	2/12	SOCIAL MEDIA
...HAMPTON COUNTY...				
HAMPTON	0.50	1100 AM	2/12	EMERGENCY MNGR
...JASPER COUNTY...				
GRAYS	0.25	1022 AM	2/13	EMERGENCY MNGR
TARBORO	0.10	1022 AM	2/13	EMERGENCY MNGR



Berkeley County, SC