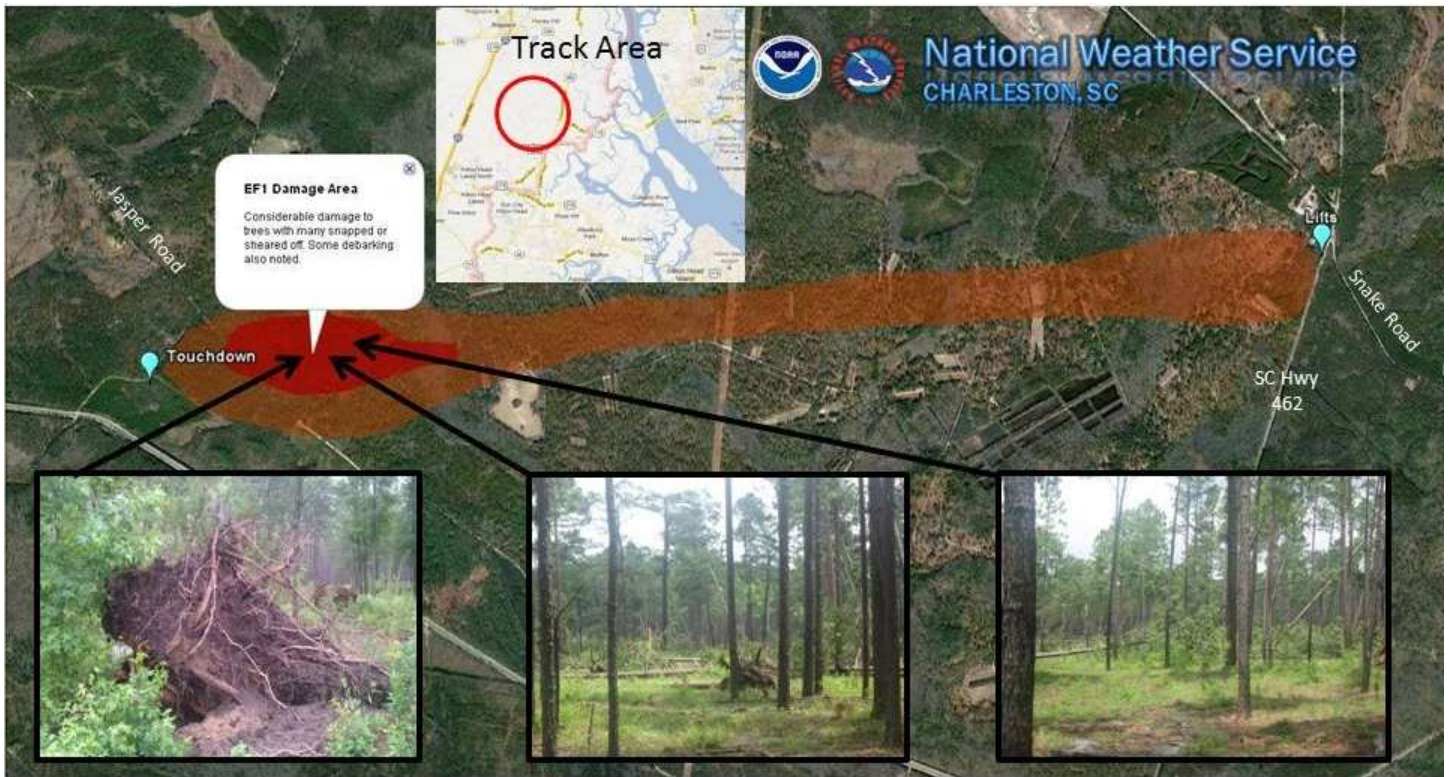


EF-1 Tornado – 7 miles south of Ridgeland, SC

June 11th, 2012 – 521 PM EDT



Summary

PUBLIC INFORMATION STATEMENT
NATIONAL WEATHER SERVICE CHARLESTON SC
424 PM EDT TUE JUN 12 2012

...TORNADO CONFIRMED SOUTH OF RIDGELAND SOUTH CAROLINA...

LOCATION...7 MILES SOUTH OF RIDGELAND SOUTH CAROLINA

DATE...JUNE 11 2012

ESTIMATED TIME...521 PM EDT

MAXIMUM EF-SCALE RATING...EF-1

ESTIMATED MAXIMUM WIND SPEED...85 TO 95 MPH

MAXIMUM PATH WIDTH...0.3 MILE

PATH LENGTH...4.12 MILES

BEGINNING LAT/LON...32.380976N / -80.979528W

ENDING LAT/LON...32.384455N / -80.909185W

* FATALITIES...0

* INJURIES...0

* THE INFORMATION IN THIS STATEMENT IS PRELIMINARY AND SUBJECT TO CHANGE PENDING FINAL REVIEW OF THE EVENT(S) AND PUBLICATION IN NWS STORM DATA.

...SUMMARY...

A NATIONAL WEATHER SERVICE DAMAGE SURVEY TEAM EVALUATED DAMAGE THAT

OCCURRED WITH A SEVERE THUNDERSTORM THAT MOVED THROUGH PORTIONS OF CENTRAL JASPER COUNTY MONDAY AFTERNOON. THE TEAM FOUND CONSIDERABLE DAMAGE TO TREES SOUTH OF RIDGELAND WITH A DAMAGE PATTERN CONSISTENT WITH A TORNADO.

THE TORNADO TOUCHED DOWN JUST WEST OF JASPER ROAD BETWEEN THE COMMUNITIES OF OKATIE AND SWITZERLAND AND MOVED RAPIDLY EAST-NORTHEAST BEFORE LIFTING NEAR THE INTERSECTION OF SOUTH CAROLINA HIGHWAY 462 AND SNAKE ROAD. THE WORST DAMAGE OCCURRED BETWEEN JASPER ROAD AND RILEY FIELD ROAD WHERE THE TEAM ESTIMATED BETWEEN 300 AND 500 MEDIUM TO LARGE-SIZE TREES WERE EITHER SNAPPED OR UPROOTED. SOME DEBARKING OF TREES WAS ALSO NOTED. THIS DEGREE OF TREE DAMAGE IS CONSISTENT WITH AN EF-1 TORNADO ON THE ENHANCED FUJITA SCALE WITH WINDS ESTIMATED TO BE BETWEEN 85 AND 95 MPH.

THIS INFORMATION CAN ALSO BE FOUND ON OUR WEBSITE AT WEATHER.GOV/CHS.

FOR REFERENCE...THE ENHANCED FUJITA SCALE CLASSIFIES TORNADOES INTO THE FOLLOWING CATEGORIES:

EF0...WIND SPEEDS 65 TO 85 MPH.
EF1...WIND SPEEDS 86 TO 110 MPH.
EF2...WIND SPEEDS 111 TO 135 MPH.
EF3...WIND SPEEDS 136 TO 165 MPH.
EF4...WIND SPEEDS 166 TO 200 MPH.
EF5...WIND SPEEDS GREATER THAN 200 MPH.

\$\$