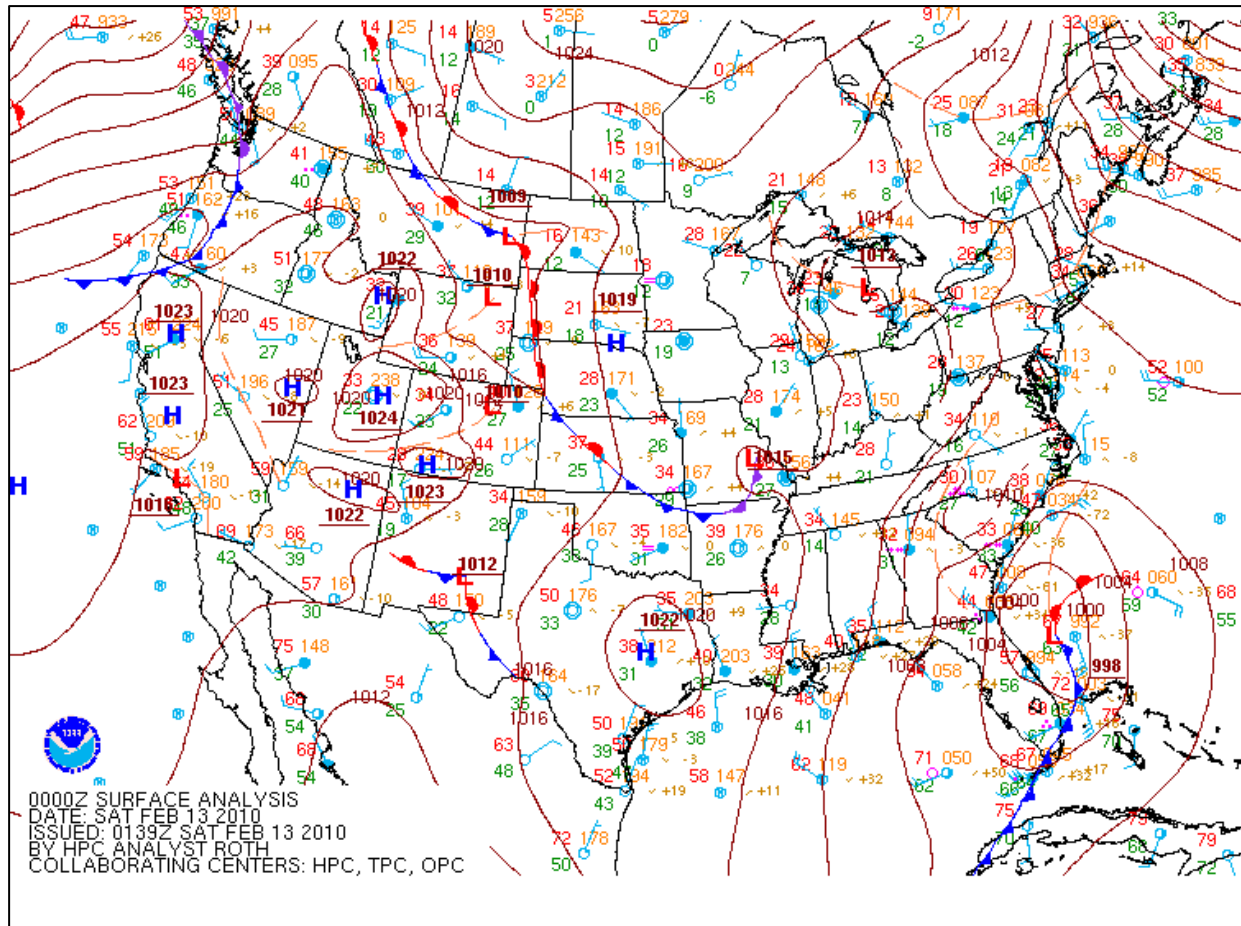
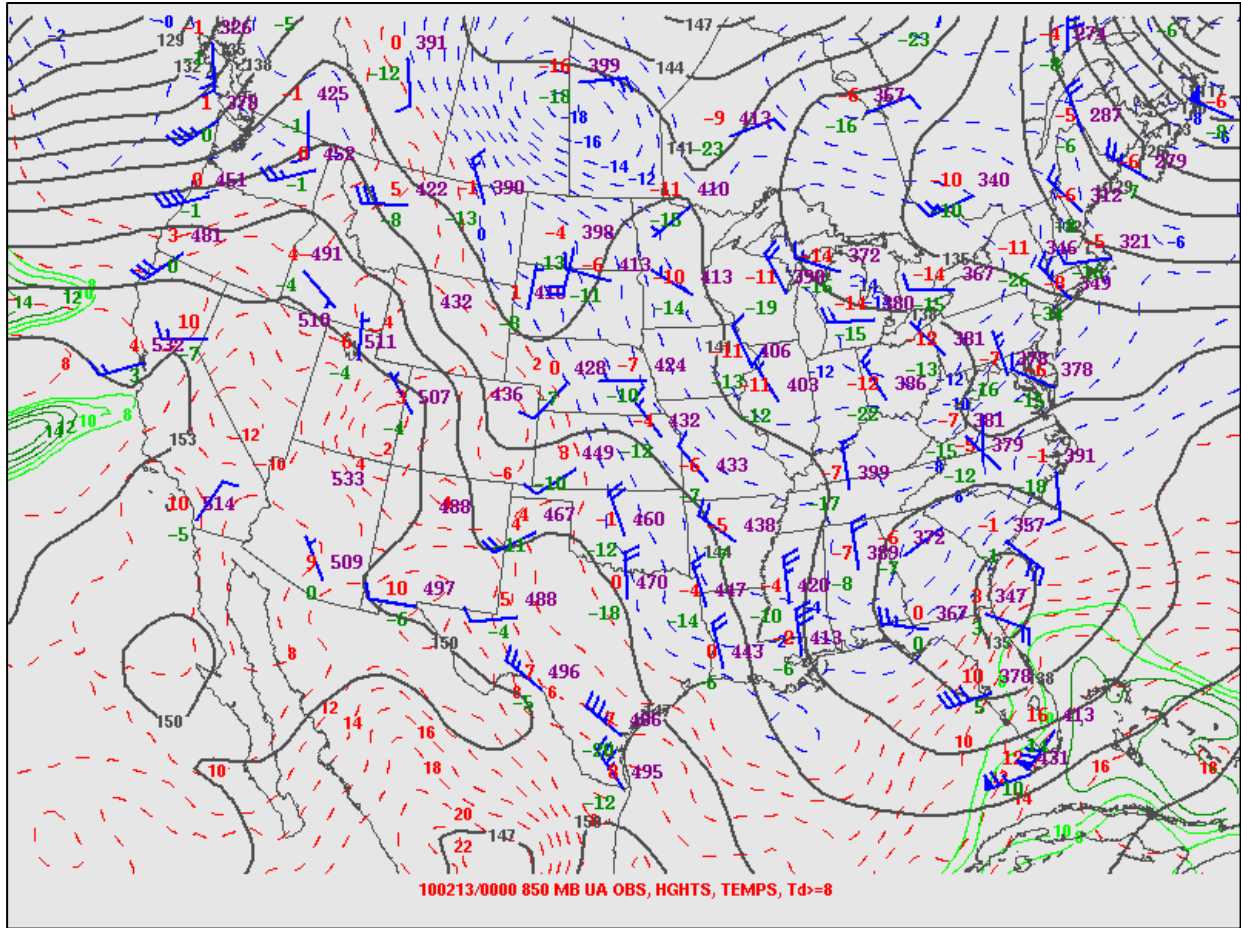


The February 12-13, 2010 Snow Storm

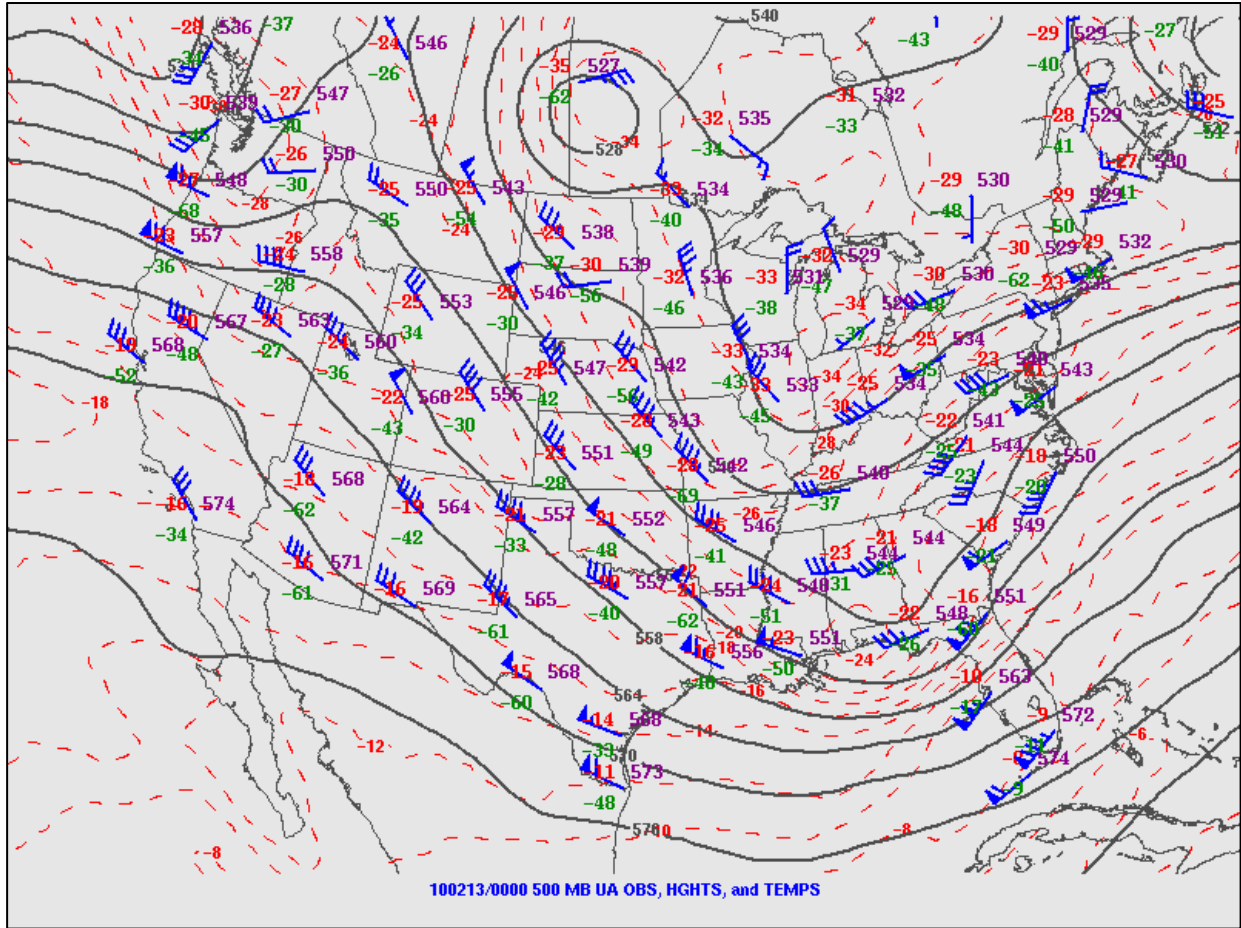
Meteorological Summary: Surface low pressure tracked offshore and initially produced a chilly rain across the region. Then, as the surface low pulled colder air into the region, a strong upper low tracked over the region. The combination of moisture, forcing for ascent and cold air changed rain to a period of snow across much of the area. Depending on your location, this was the greatest snowfall since December 1989 and even February 1973.



The early Friday evening surface analysis depicted low pressure off the Southeast coast.

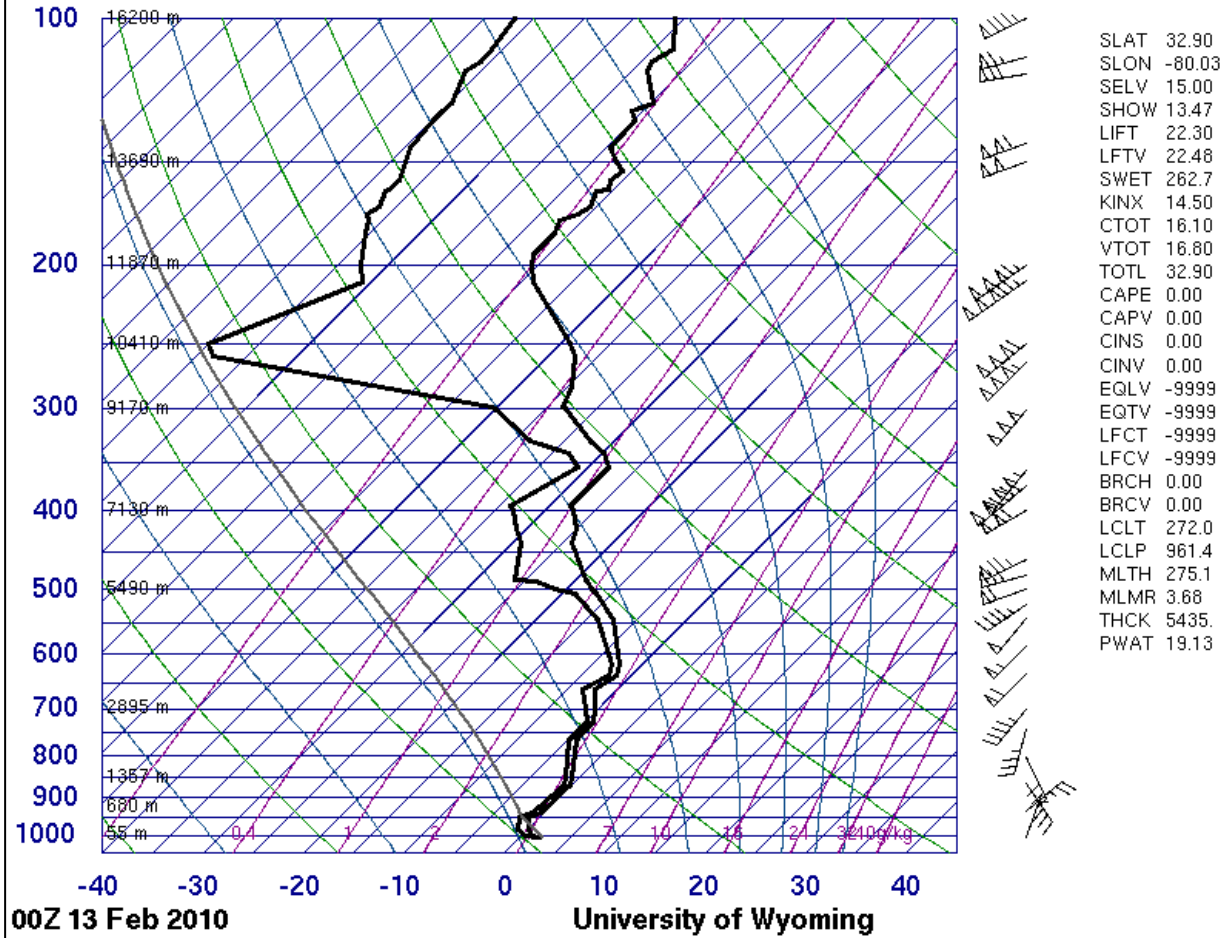


The Friday evening 850 mb analysis showed low pressure hugging the Southeast coast. North and west of this low, colder air was spreading into the region – just cold enough to produce snow.



The Tuesday evening 500 mb analysis showed the upper low approaching the Southeast coast. This feature played a crucial role in producing accumulating snow.

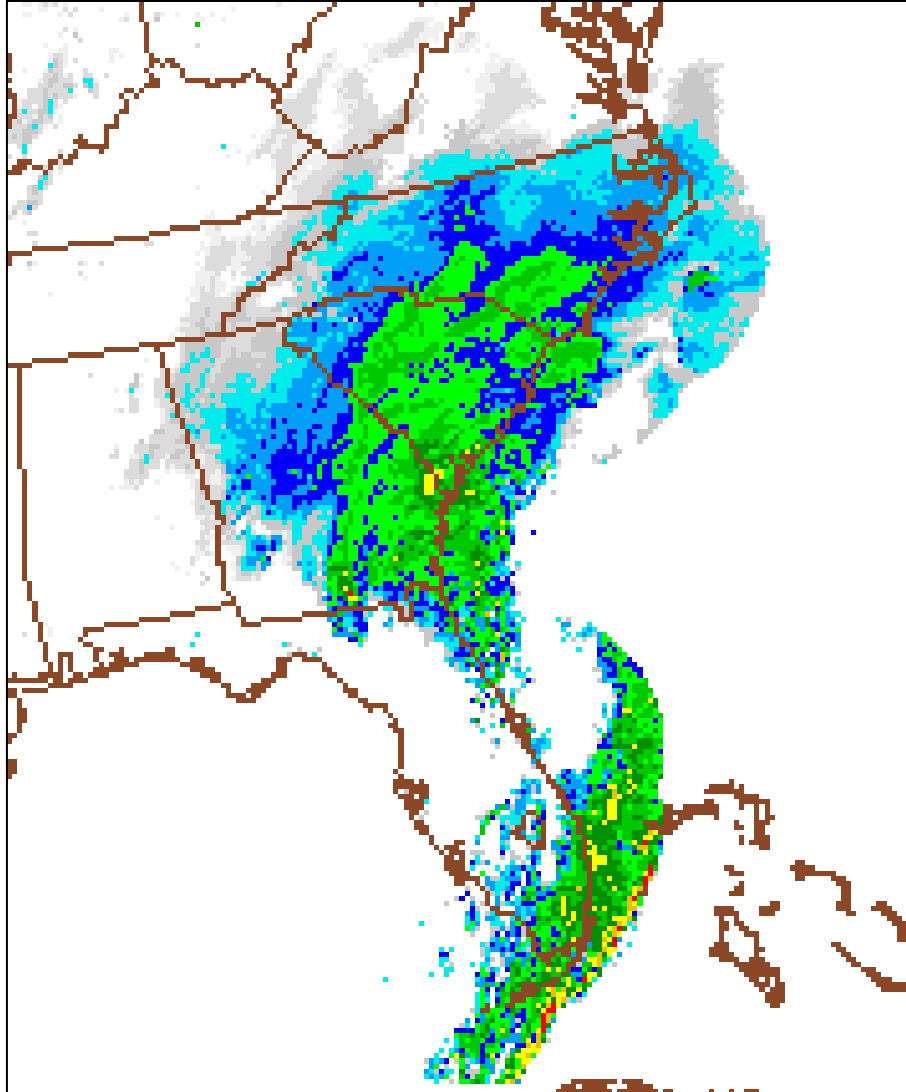
72208 CHS Charleston



The Friday evening upper air sounding launched at Charleston depicted a deep layer of moisture at or below freezing above surface temperatures just a shade above 32F. This environment offered ample opportunity for ice crystal formation and snowflake growth.



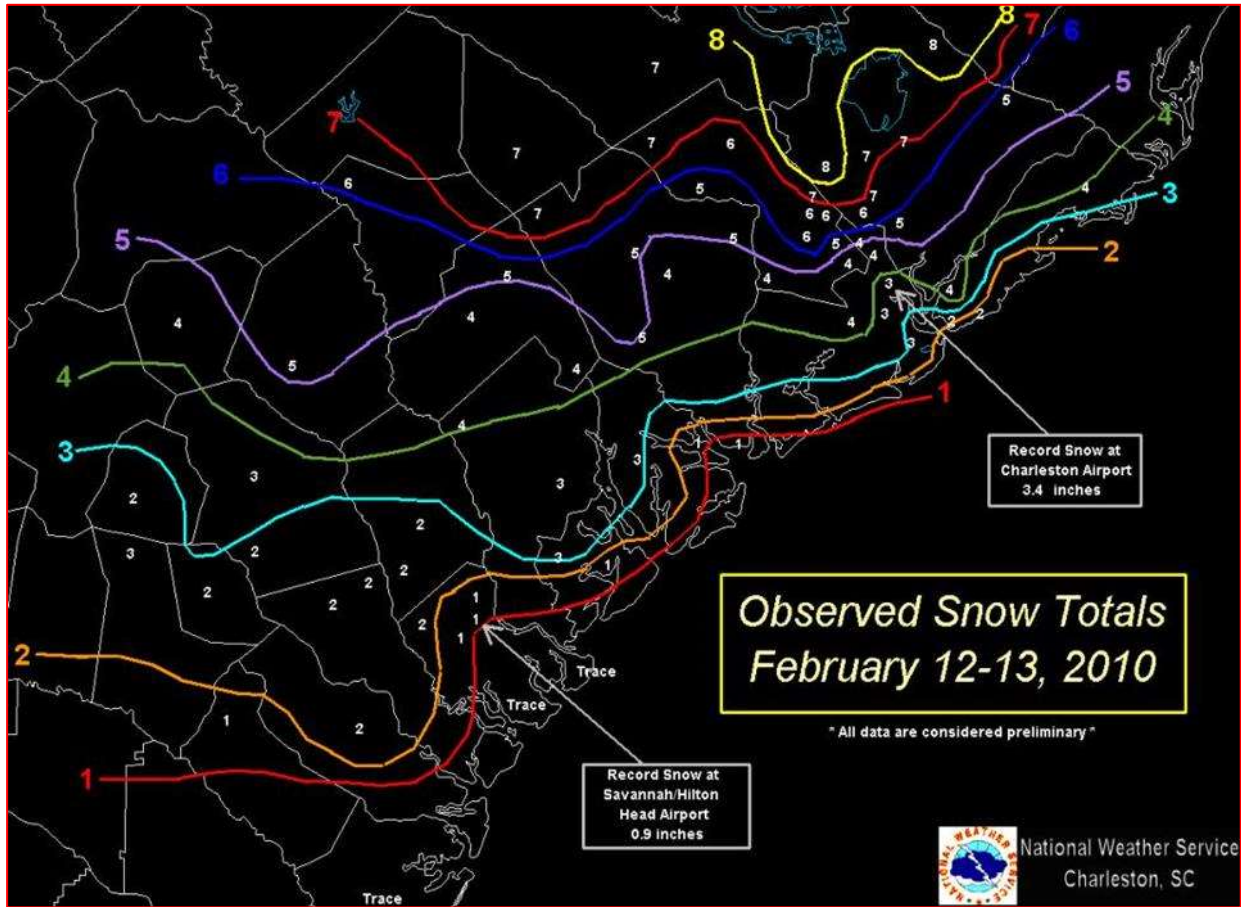
The Friday afternoon visible satellite imagery showed the thick canopy of clouds over the Southeast, including a hint of a comma cloud associated with the upper low.



Friday evening radar imagery depicted the comma cloud precipitation, associated with the upper low, draped over the region.



The Friday evening KCLX radar reflectivity image. Note the banded, convective nature of the precipitation and the high reflectivity produced in part by water-covered snowflakes in the vicinity of the rain-snow line.



PUBLIC INFORMATION STATEMENT
 NATIONAL WEATHER SERVICE CHARLESTON SC
 1215 AM EST SUN FEB 14 2010

THE FOLLOWING ARE UNOFFICIAL SNOW TOTALS FOR THE FEBRUARY 12-13 2010 SNOW EVENT. APPRECIATION IS EXTENDED TO SKYWARN SPOTTERS...BROADCAST MEDIA...COOPERATIVE OBSERVERS...COCORAHs OBSERVERS...AND THE PUBLIC FOR SENDING SNOW REPORTS. THIS SUMMARY IS ALSO AVAILABLE ON OUR HOME PAGE AT WEATHER.GOV/CHS

*****STORM TOTAL SNOWFALL*****

LOCATION	STORM TOTAL SNOWFALL (INCHES)	TIME/DATE OF MEASUREMENT	COMMENTS
----------	-------------------------------	--------------------------	----------

SOUTH CAROLINA

...ALLENDALE...			
MILLETT 3 NW	6.0	700 AM 2/13	SPOTTER

...BEAUFORT...

BEAUFORT	3.0	1132 PM	2/12	LAW ENFORCEMENT
BLUFFTON 6.2 WNW	3.0	700 AM	2/13	COCORAHS
BEAUFORT 5.9 NE	1.0	700 AM	2/13	COCORAHS
BLUFFTON	1.0	1100 PM	2/12	SPOTTER
BLUFFTON	0.8	1128 PM	2/12	SPOTTER

...BERKELEY...

SUMMERVILLE 3.8 NE	8.2	700 AM	2/13	COCORAHS
SAINT STEPHEN	8.0	800 AM	2/13	FIRE DEPT
SANGAREE 6 N	7.0	854 AM	2/13	SPOTTER
MONCKS CORNER 1 SW	6.5	1255 AM	2/13	SPOTTER
SANGAREE	6.5	1200 AM	2/13	SPOTTER
SANGAREE	5.7	845 AM	2/13	SPOTTER
JAMESTOWN	5.0	800 AM	2/13	COOP OBSERVER
JAMESTOWN	5.0	1001 PM	2/12	PUBLIC
MONCKS CORNER	5.0	930 PM	2/12	FIRE DEPT
MOUNT HOLLY 1 E	4.7	415 AM	2/13	NWS EMPLOYEE
GOOSE CREEK 3 WNW	4.5	141 AM	2/13	SPOTTER
HANAHAH 1.2 NNW	4.0	700 AM	2/13	COCORAHS
GOOSE CREEK 3 NW	3.5	1152 PM	2/12	NWS EMPLOYEE
GOOSE CREEK 4.6 WNW	3.5	700 AM	2/13	COCORAHS
GOOSE CREEK 2 NNE	3.0	1138 PM	2/12	SPOTTER
HANAHAH	3.0	1052 PM	2/12	NWS EMPLOYEE
HANAHAH 1.1 N	3.0	700 AM	2/13	COCORAHS

...CHARLESTON...

ARCHDALE 3 NE	4.9	1225 AM	2/13	SPOTTER
ARCHDALE 5 S	4.2	200 AM	2/13	SPOTTER
MCCLELLANVILLE	4.0	800 AM	2/13	FIRE DEPT
CHARLESTON 6.4 NW	4.0	700 AM	2/13	NWS EMPLOYEE
MOUNT PLEASANT	3.8	700 AM	2/13	SPOTTER
CHARLESTON AIRPORT	3.4	800 AM	2/13	OFFICIAL OBSERVER
NORTH CHARLESTON 1.1 SE	3.4	700 AM	2/13	COCORAHS
WEST ASHLEY 2 WNW	3.4	1145 PM	2/12	BROADCAST MEDIA
JAMES ISLAND 2 WNW	3.0	823 AM	2/13	SPOTTER
MT PLEASANT/PARK WEST	2.3	730 AM	2/13	NWS EMPLOYEE
MT PLEASANT/RIVERTOWNE	2.2	730 AM	2/13	NWS EMPLOYEE
CHARLESTON 2.8 NE	1.8	700 AM	2/13	COCORAHS
MT PLEASANT 1.4 SW	1.6	630 AM	2/13	NWS EMPLOYEE

...COLLETON...

SMOAKS 0.1 ESE	7.0	700 AM	2/13	COCORAHS
CANADYS 0.4 NW	5.0	700 AM	2/13	COCORAHS
COTTAGEVILLE 3 S	5.0	711 AM	2/13	NWS EMPLOYEE
HENDERSONVILLE	5.0	1147 PM	2/12	SPOTTER
WALTERBORO 3.0 NNW	5.0	700 AM	2/13	COCORAHS
WALTERBORO	4.0	855 PM	2/12	BROADCAST MEDIA
BENNETTS POINT	1.0	451 AM	2/13	SPOTTER
EDISTO BEACH	0.5	800 AM	2/13	COOP OBSERVER

...DORCHESTER...

REEVESVILLE 1.0 SSE	7.0	700 AM	2/13	COCORAHS
RIDGEVILLE	7.0	845 AM	2/13	SPOTTER

SUMMERVILLE	7.0	847 AM	2/13	SPOTTER
ARCHDALE 5 NW	6.0	200 AM	2/13	SPOTTER
ST. GEORGE 3 E	6.0	1054 PM	2/12	SPOTTER
SUMMERVILLE	6.0	800 AM	2/13	SPOTTER
SUMMERVILLE 4.1 WNW	5.6	700 AM	2/13	COCORAHS
GIVHANS FERRY S.P.	5.5	800 AM	2/13	COOP OBSERVER
SUMMERVILLE 6 SSE	5.5	1228 AM	2/13	NWS EMPLOYEE
SUMMERVILLE	5.5	1230 AM	2/13	SPOTTER
LADSON 2.3 SW	5.0	700 AM	2/13	COCORAHS
LINCOLNVILLE 2 3	5.0	650 AM	2/13	NWS EMPLOYEE
GIVHANS	4.3	1125 PM	2/12	SPOTTER
SUMMERVILLE 3.3 NE	4.0	700 AM	2/13	COCORAHS
SUMMERVILLE	4.0	1100 PM	2/12	SPOTTER
SUMMERVILLE 3.3 NE	4.0	700 AM	2/13	COCORAHS
TAYLOR PLANTATION	3.0	902 AM	2/13	NWS EMPLOYEE
SUMMERVILLE 2.1 WSW	2.0	911 PM	2/12	SPOTTER
SAINT GEORGE	0.5	655 PM	2/12	LAW ENFORCEMENT
...HAMPTON...				
VARNVILLE 6.7 SW	5.0	700 AM	2/13	COCORAHS
BRUNSON 2 SSW	4.0	1054 PM	2/12	AMATEUR RADIO
BRUNSON 1.6 SSW	4.0	700 AM	2/13	COCORAHS
YEMASSEE	3.5	1150 PM	2/12	AMATEUR RADIO
...JASPER...				
PINELAND	4.0	1200 AM	2/13	LAW ENFORCEMENT
RIDGELAND 5.8 ESE	3.0	700 AM	2/13	COCORAHS
GEORGIA				
...BRYAN...				
BLITCHTON	2.0	835 AM	2/13	PUBLIC
PEMBROKE	2.0	907 PM	2/12	SPOTTER
...BULLOCH...				
BROOKLET	2.5	750 AM	2/13	COOP OBSERVER
STATESBORO	2.5	935 PM	2/12	AMATEUR RADIO
STATESBORO 3 SW	1.9	945 PM	2/12	SPOTTER
...CANDLER...				
METTER	2.0	925 PM	2/12	LAW ENFORCEMENT
...CHATHAM...				
POOLER	2.0	1030 PM	2/12	SPOTTER
POOLER 1.2 NNE	1.5	700 AM	2/13	COCORAHS
GARDEN CITY	1.0	830 AM	2/13	PUBLIC
POOLER 0.8 NNE	1.0	700 AM	2/13	COCORAHS
SAVANNAH AIRPORT	0.9	1200 AM	2/13	OFFICIAL OBSERVER
...EFFINGHAM...				
GUYTON	2.0	930 PM	2/12	LAW ENFORCEMENT
SPRINGFIELD	2.0	711 AM	2/13	SPOTTER
SPRINGFIELD	1.5	930 PM	2/12	LAW ENFORCEMENT
RINCON	1.0	1045 PM	2/12	SPOTTER

...EVANS...					
CLAXTON 5 W	1.5	945 PM	2/12	SPOTTER	
...JENKINS...					
MILLEN	3.5	935 PM	2/12	LAW ENFORCEMENT	
...LIBERTY...					
HINESVILLE	2.0	907 PM	2/12	SPOTTER	
...LONG...					
GLENNVILLE 3 ESE	0.7	1030 PM	2/12	AMATEUR RADIO	
...SCREVEN...					
SYLVANIA 4.2 WSW	4.5	700 AM	2/13	COCORAHS	
SYLVANIA	3.0	953 PM	2/12	EMERGENCY MNGR	
NEWINGTON	2.0	739 PM	2/12	PUBLIC	
...TATTNALL...					
COBBTOWN 1 E	3.0	1000 PM	2/12	SPOTTER	
REIDSVILLE	1.0	732 PM	2/12	SPOTTER	

\$\$



Near Round O, SC (Brent Shirts, NWS).



Dorchester Road, North Charleston (Doug Berry, NWS).



Charleston, SC, Waterfront Park (Doug Berry, NWS).



NWS Office, Charleston, SC (John Quagliarello, NWS).



Hanahan, SC (Bob Bright, NWS).



James Island, SC (Vern Beaver, NWS).