

**NOAA Technical Memorandum
NWS ER-93**



**A SEVERE WEATHER CLIMATOLOGY FOR THE WILMINGTON, NC
WFO COUNTY WARNING AREA**

Carl R. Morgan

National Weather Service Office
Wilmington, North Carolina

Scientific Services Division
Eastern Region Headquarters
Bohemia, New York
October 2001

**U.S. DEPARTMENT OF
COMMERCE**

**National Oceanic and
Atmospheric Administration**

**National Weather
Service**

NOAA TECHNICAL MEMORANDA
National Weather Service, Eastern Region Subseries

The National Weather Service Eastern Region (ER) Subseries provides an informal medium for the documentation and quick dissemination of results not appropriate, or not yet ready for formal publications. The series is used to report on work in progress, to describe technical procedures and practices, or to relate progress to a limited audience. These Technical Memoranda will report on investigations devoted primarily to regional and local problems of interest mainly to ER personnel, and usually will not be widely distributed.

Papers 1 to 22 are in the former series, ESSA Technical Memoranda, Eastern Region Technical Memoranda (ERTM); papers 23 to 37 are in the former series, ESSA Technical Memoranda, Weather Bureau Technical Memoranda (WBTM). Beginning with 38, the papers are now part of the series, NOAA Technical Memoranda NWS.

Papers 1 to 22 are available from the National Weather Service Eastern Region, Scientific Services Division, 630 Johnson Avenue, Bohemia, NY, 11716. Beginning with 23, the papers are available from the National Technical Information Service, U.S. Department of Commerce, Sills Bldg., 5285 Port Royal Road, Springfield, VA 22161. Prices vary for paper copy and for microfiche. Order by accession number shown in parentheses at end of each entry.

ESSA Technical Memoranda

ERTM	1	Local Uses of Vorticity Prognoses in Weather Prediction. Carlos R. Dunn. April 1965.
ERTM	2	Application of the Barotropic Vorticity Prognostic Field to the Surface Forecast Problem. Silvio G. Simplicio. July 1965.
ERTM	3	A Technique for Deriving an Objective Precipitation Forecast Scheme for Columbus, Ohio. Robert Kuessner. September 1965.
ERTM	4	Stepwise Procedures for Developing Objective Aids for Forecasting the Probability of Precipitation. Carlos R. Dunn. November 1965.
ERTM	5	A Comparative Verification of 300 mb. Winds and Temperatures Based on NMC Computer Products Before and After Manual Processing. Silvio G. Simplicio. March 1966.
ERTM	6	Evaluation of OFDEV Technical Note No. 17. Richard M. DeAngelis. March 1966.
ERTM	7	Verification of Probability of Forecasts at Hartford, Connecticut, for the Period 1963-1965. Robert B. Wassall. March 1966.
ERTM	8	Forest-Fire Pollution Episode in West Virginia, November 8-12, 1964. Robert O. Weedfall. April 1966.
ERTM	9	The Utilization of Radar in Meso-Scale Synoptic Analysis and Forecasting. Jerry D. Hill. March 1966.
ERTM	10	Preliminary Evaluation of Probability of Precipitation Experiment. Carlos R. Dunn. May 1966.
ERTM	11	Final Report. A Comparative Verification of 300 mb. Winds and Temperatures Based on NMC Computer Products Before and After Manual Processing. Silvio G. Simplicio. May 1966.
ERTM	12	Summary of Scientific Services Division Development Work in Sub-Synoptic Scale Analysis and Prediction - Fiscal Year 1966. Fred L. Zuckerberg. May 1966.
ERTM	13	A Survey of the Role of Non-Adiabatic Heating and Cooling in Relation of the Development of Mid-Latitude Synoptic Systems. Constantine Zois. July 1966.
ERTM	14	The Forecasting of Extratropical Onshore Gales at the Virginia Capes. Glen V. Sachse. August 1966.
ERTM	15	Solar Radiation and Clover Temperatures. Alex J. Kish. September 1966.
ERTM	16	The Effects of Dams, Reservoirs and Levees on River Forecasting. Richard M. Greening. September 1966.
ERTM	17	Use of Reflectivity Measurements and Reflectivity Profiles for Determining Severe Storms. Robert E. Hamilton. October 1966.
ERTM	18	Procedure for Developing a Nomograph for Use in Forecasting Phenological Events from Growing Degree Days. John C. Purvis and Milton Brown. December 1966.
ERTM	19	Snowfall Statistics for Williamsport, Pa. Jack Hummel. January 1967
ERTM	20	Forecasting Maturity Date of Snap Beans in South Carolina. Alex J. Kish. March 1967.
ERTM	21	New England Coastal Fog. Richard Fay. April 1967.
ERTM	22	Rainfall Probability at Five Stations Near Pickens, South Carolina, 1957-1963. John C. Purvis. April 1967.
WBTM ER	23	A Study of the Effect of Sea Surface Temperature on the Areal Distribution of Radar Detected Precipitation Over the South Carolina Coastal Waters. Edward Paquet. June 1967. (PB-180-612).
WBTM ER	24	An Example of Radar as a Tool in Forecasting Tidal Flooding. Edward P. Johnson. August 1967 (PB-180-613).
WBTM ER	25	Average Mixing Depths and Transport Wind Speeds over Eastern United States in 1965. Marvin E. Miller. August 1967. (PB-180-614).
WBTM ER	26	The Sleet Bright Band. Donald Marier. October 1967. (PB-180-615).
WBTM ER	27	A Study of Areas of Maximum Echo Tops in the Washington, D.C. Area During the Spring and Fall Months. Marie D. Fellechner. April 1968. (PB-179-339).
WBTM ER	28	Washington Metropolitan Area Precipitation and Temperature Patterns. C.A. Woollum and N.L. Canfield. June 1968. (PB-179-340).
WBTM ER	29	Climatological Regime of Rainfall Associated with Hurricanes after Landfall. Robert W. Schoner. June 1968. (PB-179-341).
WBTM ER	30	Monthly Precipitation - Amount Probabilities for Selected Stations in Virginia. M.H. Bailey. June 1968. (PB-179-342).
WBTM ER	31	A Study of the Areal Distribution of Radar Detected Precipitation at Charleston, S.C. S.K. Parrish and M.A. Lopez. October 1968. (PB-180-480).
WBTM ER	32	The Meteorological and Hydrological Aspects of the May 1968 New Jersey Floods. Albert S. Kachic and William Long. February 1969. (Revised July 1970). (PB-194-222).
WBTM ER	33	A Climatology of Weather that Affects Prescribed Burning Operations at Columbia, South Carolina. S.E. Wasserman and J.D. Kanupp. December 1968. (COM-71-00194).
WBTM ER	34	A Review of Use of Radar in Detection of Tornadoes and Hail. R.E. Hamilton. December 1969. (PB-188-315).
WBTM ER	35	Objective Forecasts of Precipitation Using PE Model Output. Stanley E. Wasserman. July 1970. (PB-193-378).
WBTM ER	36	Summary of Radar Echoes in 1967 Near Buffalo, N.Y. Richard K. Sheffield. September 1970. (COM-71-00310).
WBTM ER	37	Objective Mesoscale Temperature Forecasts. Joseph P. Sobel. September 1970. (COM-71-0074).

NOAA Technical Memoranda NWS

NWS	ER 38	Use of Primitive Equation Model Output to Forecast Winter Precipitation in the Northeast Coastal Sections of the United States. Stanley E. Wasserman and Harvey Rosenblum. December 1970. (COM-71-00138).
NWS	ER 39	A Preliminary Climatology of Air Quality in Ohio. Marvin E. Miller. January 1971. (COM-71-00204).
NWS	ER 40	Use of Detailed Radar Intensity Data in Mesoscale Surface Analysis. Robert E. Hamilton. March 1971. (COM-71-00573).
NWS	ER 41	A Relationship Between Snow Accumulation and Snow Intensity as Determined from Visibility. Stanley E. Wasserman and Daniel J. Monte. (COM-71-00763). January 1971.
NWS	ER 42	A Case Study of Radar Determined Rainfall as Compared to Rain Gage Measurements. Martin Ross. July 1971. (COM-71-00897).
NWS	ER 43	Snow Squalls in the Lee of Lake Erie and Lake Ontario. Jerry D. Hill. August 1971. (COM-72-00959).
NWS	ER 44	Forecasting Precipitation Type at Greer, South Carolina. John C. Purvis. December 1971. (COM-72-10332).
NWS	ER 45	Forecasting Type of Precipitation. Stanley E. Wasserman. January 1972. (COM-72-10316).

(CONTINUED ON INSIDE REAR COVER)

NOAA Technical Memorandum NWS ER-93

**A SEVERE WEATHER CLIMATOLOGY FOR THE WILMINGTON, NC
WFO COUNTY WARNING AREA**

Carl R. Morgan

National Weather Service Office
Wilmington, North Carolina

Scientific Services Division
Eastern Region Headquarters
Bohemia, New York
October 2001

United States
Department of Commerce
Donald Evans
Secretary

National Oceanic and
Atmospheric Administration
Scott B. Gudes
Under Secretary and Administrator

National Weather Service
John J. Kelly, Jr.
Director



TABLE OF CONTENTS

1. INTRODUCTION	1
2. DATA	1
3. COUNTY WARNING AREA TOPOGRAPHY AND DEMOGRAPHICS ...	1
4. TORNADO CLIMATOLOGY	2
a) Monthly frequency	2
b) Hourly frequency	2
c) Magnitude	2
5. HAIL CLIMATOLOGY	3
a) Monthly frequency	3
b) Hourly frequency	3
6. WIND CLIMATOLOGY	3
a) Monthly frequency	3
b) Hourly frequency	3
7. CONCLUSIONS	3
ACKNOWLEDGMENTS	4
REFERENCES	5

1. INTRODUCTION

The National Weather Service (NWS) Warning Forecast Office (WFO) located in Wilmington, NC has forecast and warning responsibility for fourteen counties spanning northeast South Carolina and southeast North Carolina (Fig. 1). Although the area may be better known for its vulnerability to land falling tropical cyclones, non-tropical severe thunderstorms are not uncommon. They often form as mid and upper-level tropospheric waves interact with the sea breeze front, the Piedmont trough, and the abundance of moisture provided by both the Atlantic Ocean and the Gulf of Mexico.

2. DATA

By NWS definition, a severe local storm is one that is sufficiently intense to threaten life and/or property, including thunderstorms with large hail, damaging wind, or tornadoes (National Weather Service 1995).

The NWS Storm Prediction Center (SPC) in Norman, OK and the National Climatic Data Center (NCDC) in Asheville, NC provide online access to documented severe weather events across the United States. Each site provides tornado data from 1950 through 1995, and wind and hail data from 1955 through 1995. The NCDC site supplements this data with documented events through the present. Data for this study was supplemented with Local Storm Data publications and is current through December 31, 2000. All times are referenced to Eastern Standard Time.

3. COUNTY WARNING AREA TOPOGRAPHY AND DEMOGRAPHICS

The sandy soil of the central and eastern sections of the Carolinas is bounded by clay-laden soil to the west and the Atlantic Ocean to the east. On sunny days, the air mass over the sandy terrain heats up more quickly than its bordering air masses and results in the formation of a surface trough of low pressure (Fig. 2). Referred to as the *Piedmont trough*, this feature is often convectively active during the late spring and summer months (Koch et al. 1997).

Another feature which often provides the focus for thunderstorm development is the sea-breeze front (Fig. 3). Like the Piedmont trough, this boundary forms in response to differential heating. It can develop as early as mid-morning on hot spring and summer days, and defines the inland progression of the marine layer. On a typical day, the marine layer will penetrate across the coastal counties, but on occasion can progress inland 100 miles or more and blanket the entire county warning area (CWA) with more stable marine air.

These phenomena do not, in themselves, determine the severity of thunderstorms. However they do have a significant impact in defining the areas that are more or less likely to experience convection.

Population density variations across the CWA likely bias local severe weather climatology statistics. Figure 4 shows that counties with lower population densities often report less severe weather, possibly because many events are not witnessed firsthand and therefore go unreported.

Although one may expect more severe weather events to occur in larger counties, statistics do not always show this correlation (Fig. 5). For example, Horry County is the largest county in terms of square miles, and also reported the most severe weather. However Williamsburg county, the fourth largest, reported the least. This may be attributed to the fact that Horry County is the most densely populated county and Williamsburg county is among the least.

4. TORNADO CLIMATOLOGY

a) Monthly frequency

The monthly distribution of tornadoes shows that the CWA experiences three different tornado seasons within a year (Fig. 6). An increasing trend begins in January and peaks in June, with the sharpest increase in activity from February to March. Of the tornadoes on record from 1950-2000, 50% occurred from March through June.

Secondary peaks occurred in September and November. The November maximum is known nationally as the second “tornado season” (Grazulis 1993). The September peak is unique to coastal regions of the United States from Texas to Virginia, and coincides with the peak in tropical cyclone season.

b) Hourly frequency

Diurnal trends over the course of a year show an increase in activity after 10 AM. Mid to late afternoon is the most active part of the day with a peak between 4-5 PM. Thirty-nine percent of events occurred between 2-5 PM (Fig. 7).

When viewed separately, the three tornado seasons reveal differing diurnal trends. During the March-June season, activity increases after 10 AM, peaks between 4-5 PM, and drops off sharply after 5 PM (Fig. 8). Only 2% of these tornadoes occurred between 11 PM and 7 AM. The October-November activity peaked between 2-5 PM, with 64% of events within this time range (Fig. 9). August and September events were more evenly distributed. Sixty-five percent occurred between noon and 10 PM (Fig. 10).

Late night and early morning tornadoes were more common during August and September than during other months, with one-third having occurred between midnight and 10 AM. A reason may be that tropical cyclone (TC) tornado activity is closely associated with the enhanced wind fields and vertical shear near the center of tropical cyclones, and landfall can occur at any hour. Studies have shown that TC tornado activity peaks during the 24 hours following landfall (Hill et al. 1966; Nolan and Gray 1974; Gentry 1983). Unfortunately the data available for this study does not distinguish tropical tornadoes from non-tropical ones.

c) Magnitude

The Fujita Scale (Table 1) attempts to classify tornado intensity based on the extent of the associated wind damage (Fujita 1981). Most tornadoes which occurred in the CWA were classified

as weak. Of the 216 tornadoes which were rated according to the Fujita Scale, 75% were ranked as either F0 or F1 (Fig. 11). There have been 6 known occurrences of F4 tornadoes in the CWA between 1950-2000, however no documented tornadoes have produced F5 damage.

5. HAIL CLIMATOLOGY

a) Monthly frequency

The monthly distribution of severe hail events shows a prominent peak during the month of May, and very little activity during the late fall and winter months (Fig. 12). Sixty-five percent occurred from April-June, and 94% occurred from March-August. Since 1955, only three cases of severe hail have been recorded between the months of October and January, with no reports in October or December.

b) Hourly frequency

Severe hail has been documented during every hour of the day, with the exception of 3-4 AM (Fig. 13). Eighty-four percent of the events occurred between 11 AM-8 PM, with diurnal trends indicating a prominent peak between 2-4 PM. Only 5% of the cases occurred between midnight and 10 AM.

6. WIND CLIMATOLOGY

a) Monthly frequency

The monthly distribution of severe wind events shows the most active period being May-August, during which 70% of all events occurred (Fig. 14).

b) Hourly frequency

The hourly distribution of severe wind shows that 74% of documented events occurred between noon and 8 PM (Fig.15). Outside of this time, events were evenly distributed with no secondary maximums evident. During the three most active months, this diurnal trend becomes even more apparent. From May-August, 84% of documented events occurred between noon and 8 PM (Fig. 16).

7. CONCLUSIONS

Becoming familiar with the monthly, hourly, and county-by-county distribution of local severe weather events will help the staff of WFO Wilmington, NC improve severe weather forecasts and warnings. Knowing the peak months and hours for severe weather will result in heightened awareness of the operational staff, and will allow the local management to make better-informed long-term staffing decisions. In addition, this climatology will aid the local Public Outreach Team

by helping identify those counties which stand to benefit the most from increased outreach efforts. Also, more data should be collected to develop a more detailed study of tropical cyclone tornadoes.

ACKNOWLEDGMENTS

The author would like to thank Lance Escude' of WFO Lake Charles, LA, and Dave Loewenthal, Hydro-Meteorological Technician at WFO Wilmington, NC, for their efforts in obtaining and decoding the data for this climatology. The author would also like to thank Reid Hawkins, Science Operations Officer, and Tom Matheson, Warning Coordination Meteorologist, of NWS Wilmington, NC for thoughtful input and review.

REFERENCES

- Fujita, T.T., 1981: Tornadoes and downbursts in the context of generalized planetary scales. *J. Atmos. Sci.* **38**, 1511-34.
- Gentry, RC, 1983: Genesis of tornadoes associated with hurricanes. *Mon Wea. Rev.*, **111**, 1793-1805.
- Grazulis, Thomas P., 1993: *Significant tornadoes 1680-1991*. Environmental Films, 1326 pp.
- Hill, EL, W. Makin, and W.A. Schultz, Jr., 1966: Tornadoes associated with cyclones of tropical origin -- practical features. *J. Appl. Meteor.*, **5**, 745-763.
- Koch, Steven E., and Charles A. Ray, 1997: Mesoanalysis of Summertime Convergence Zones in Central and Eastern North Carolina. *Weather and Forecasting*, **Vol. 12, No. 1**, pp. 56-77.
- National Weather Service, 1995: *National Weather Service Operations Manual*, Part C, Chapter 40.
- Nolan, D.J., and W.M. Gray, 1974: Hurricane-spawned tornadoes. *Mon Wea. Rev.*, **102**, 476-488.

Table 1. The Fujita Scale

Scale	Wind Speed	Tornado Character
0	40-72 mph	Weak
1	73-112 “	Weak
2	113-157 “	Strong
3	158-206 “	Strong
4	207-260 “	Violent
5	261-318 “	Violent

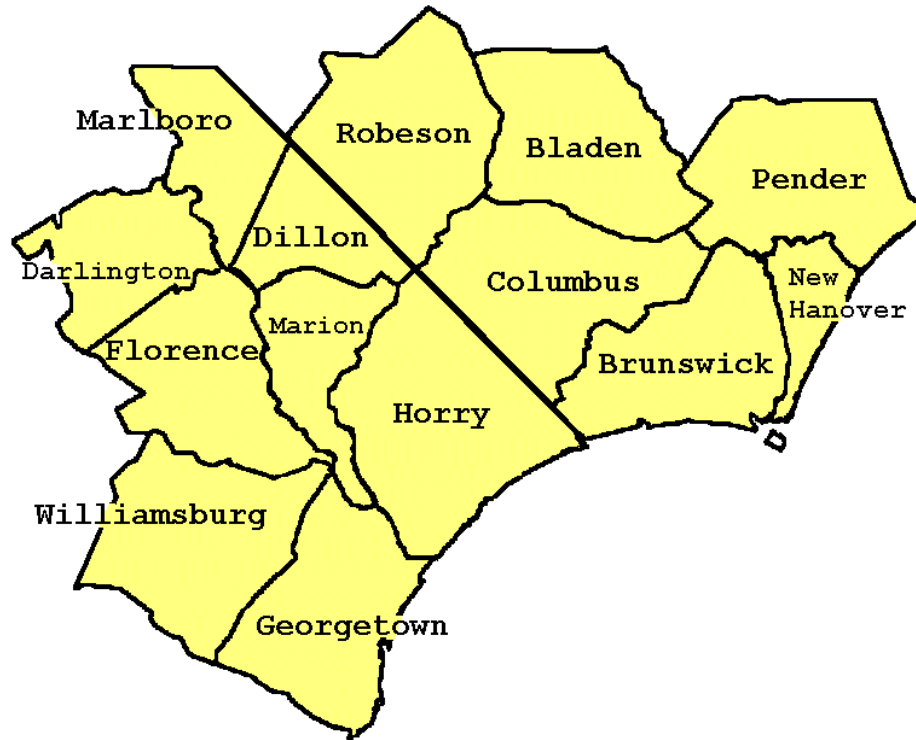


Figure 1. The County Warning Area includes eight counties in northeast South Carolina and six counties in southeast North Carolina.

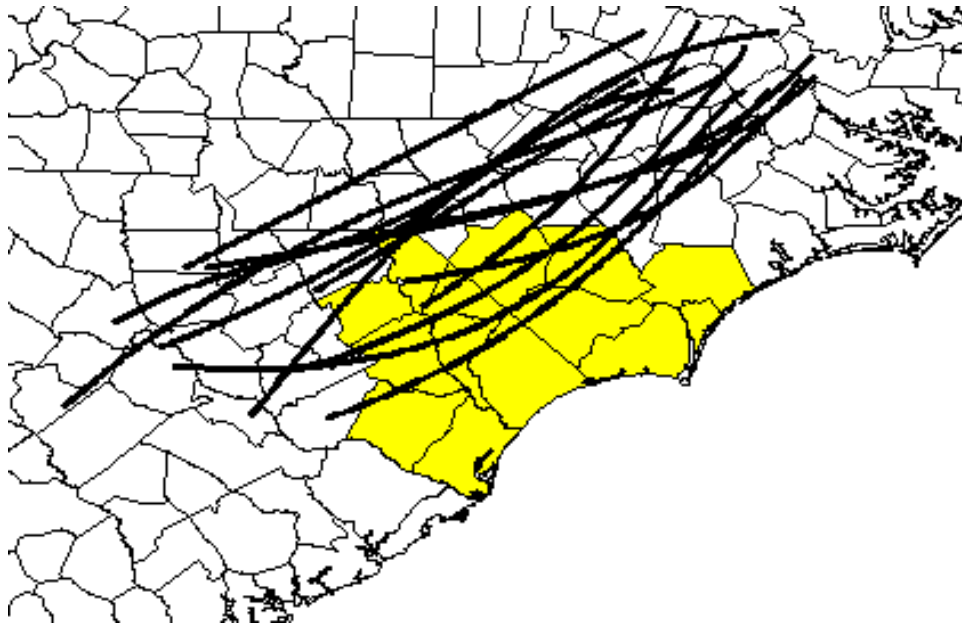


Figure 2. The location of 13 Piedmont troughs that formed from May through September 1994 (adapted from Koch et al. 1997).

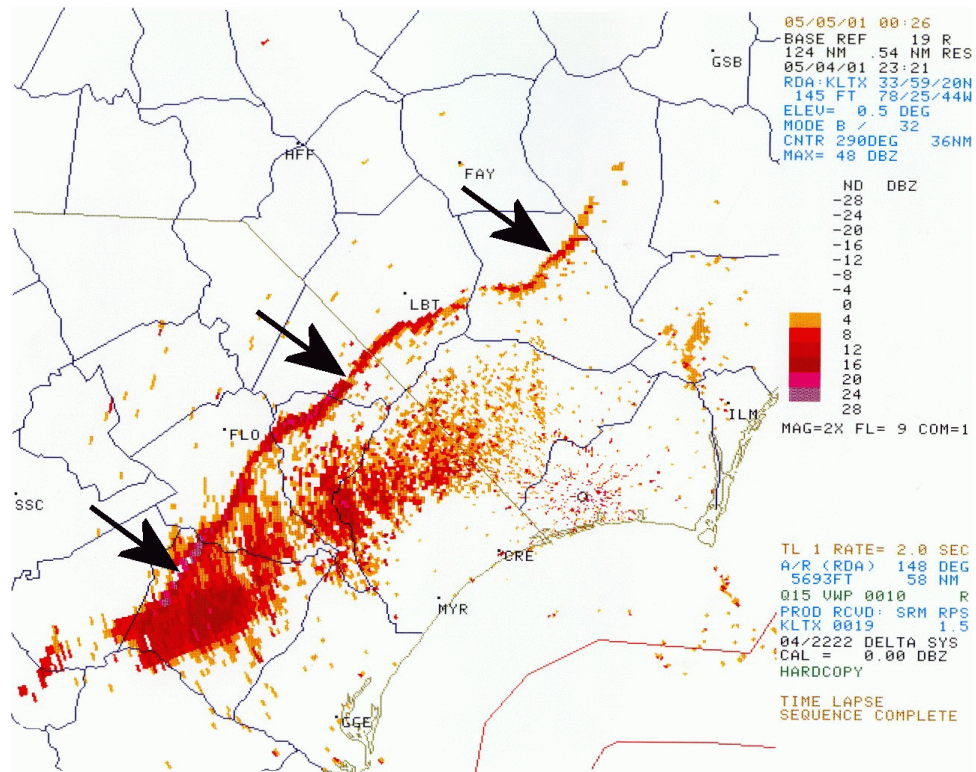


Figure 3. Example of the sea-breeze front indicated in KLTX WSR-88D reflectivity at 2321 UTC 4 May 2001.

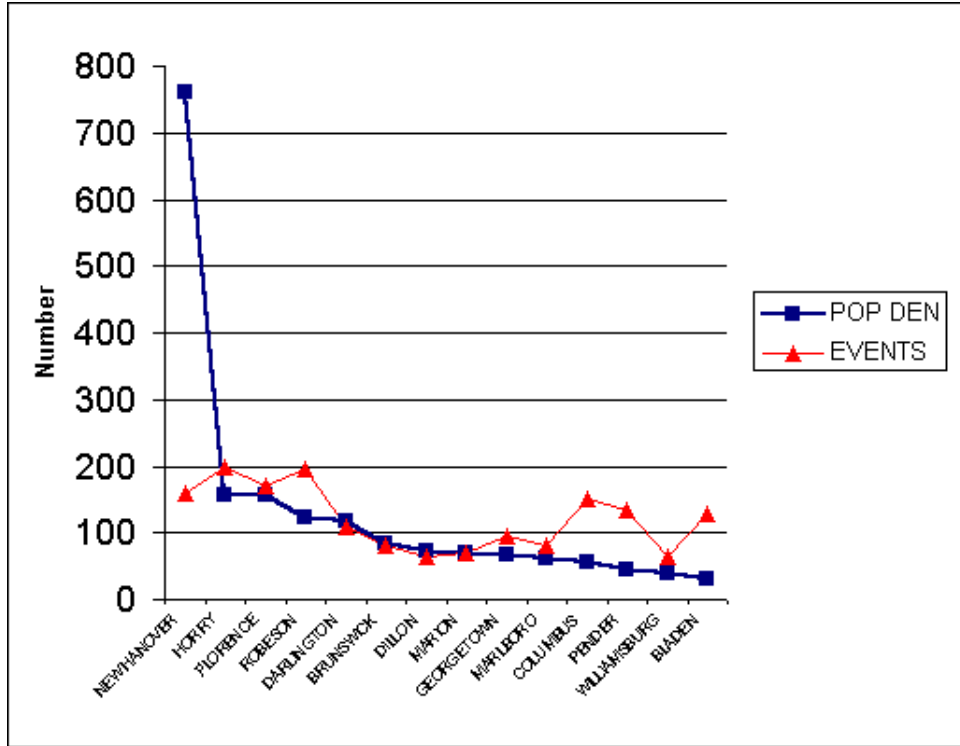


Figure 4. County population density (persons per square mile) based on 1999 Census Bureau estimates, and number of documented severe weather events from 1950-2000.

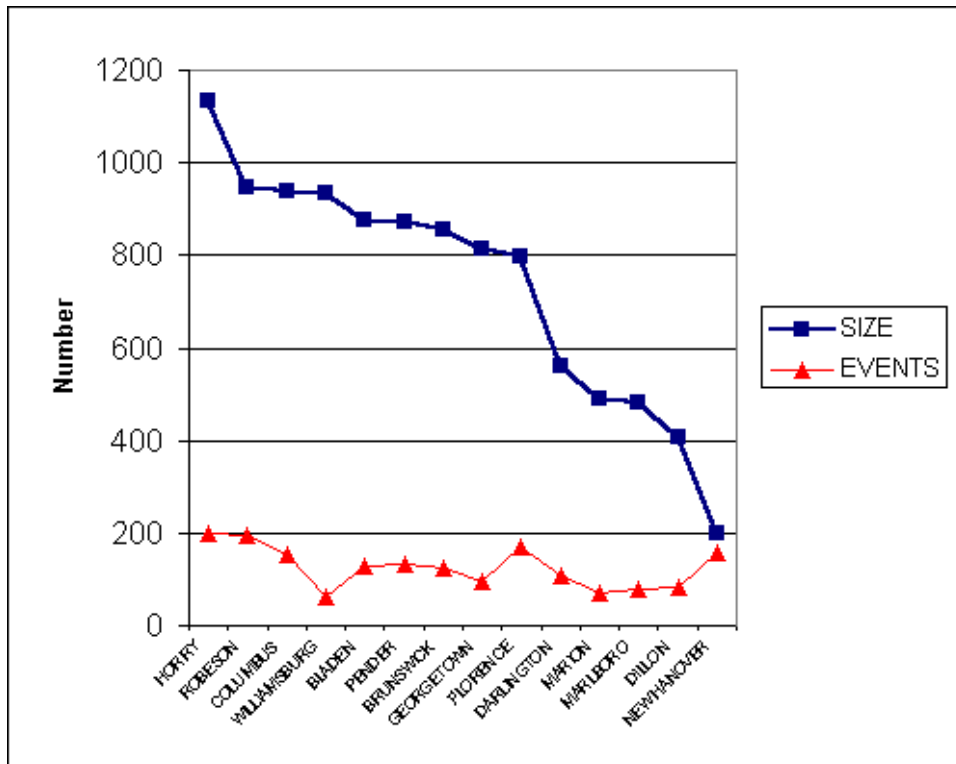


Figure 5. County size (in square miles) and number of documented severe weather events from 1950-2000.

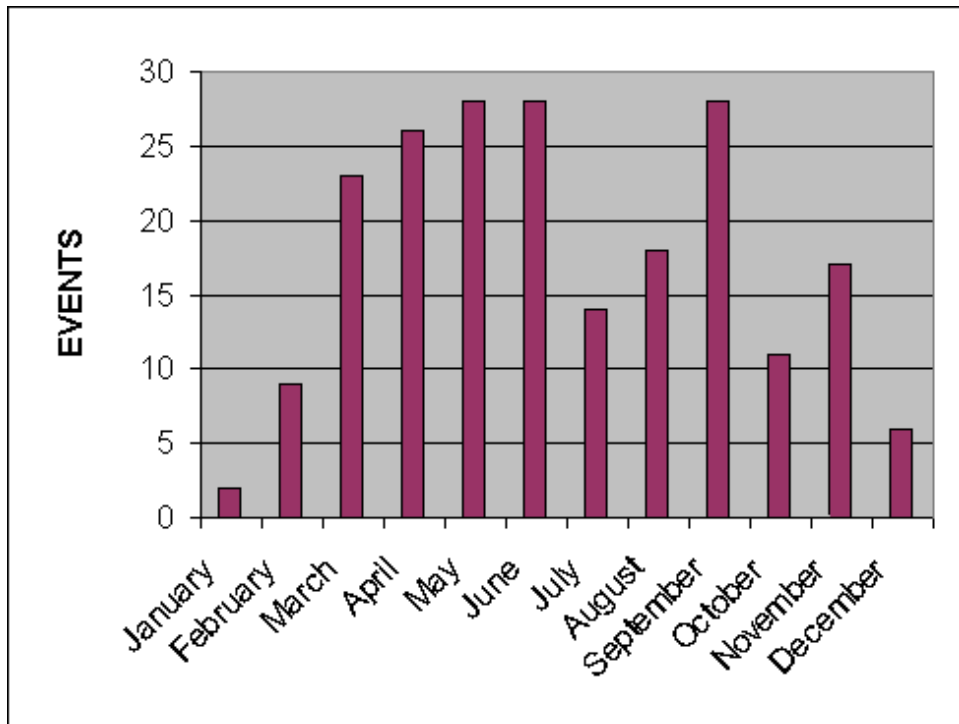


Figure 6. The monthly distribution of tornadoes (1950-2000).

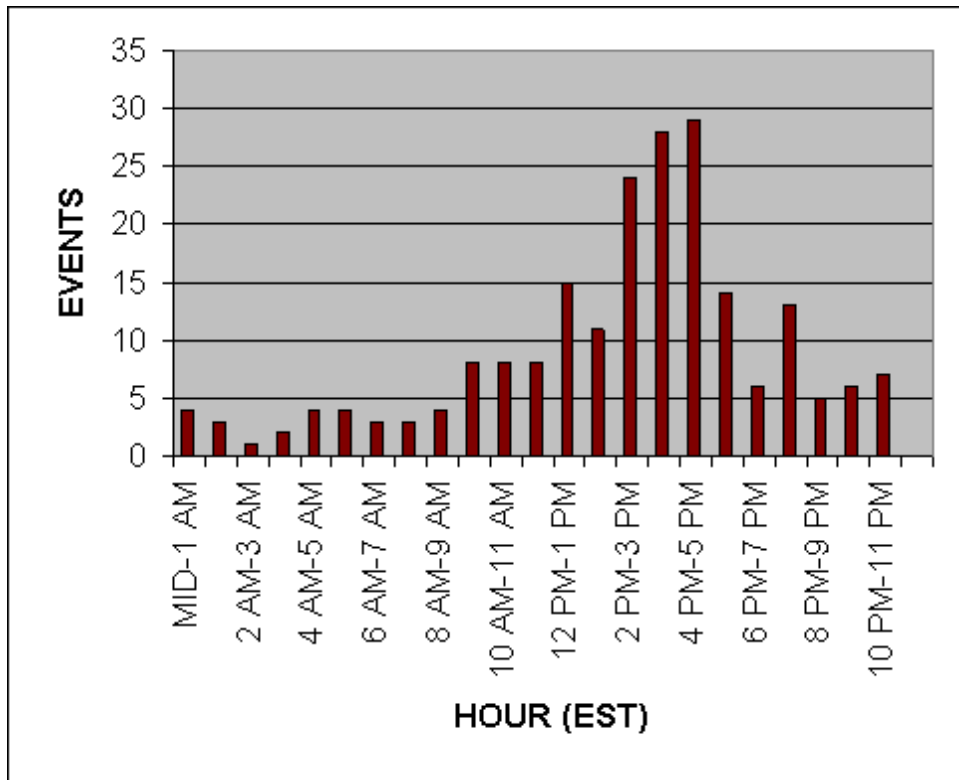


Figure 7. The hourly distribution of all tornadoes (1950-2000).

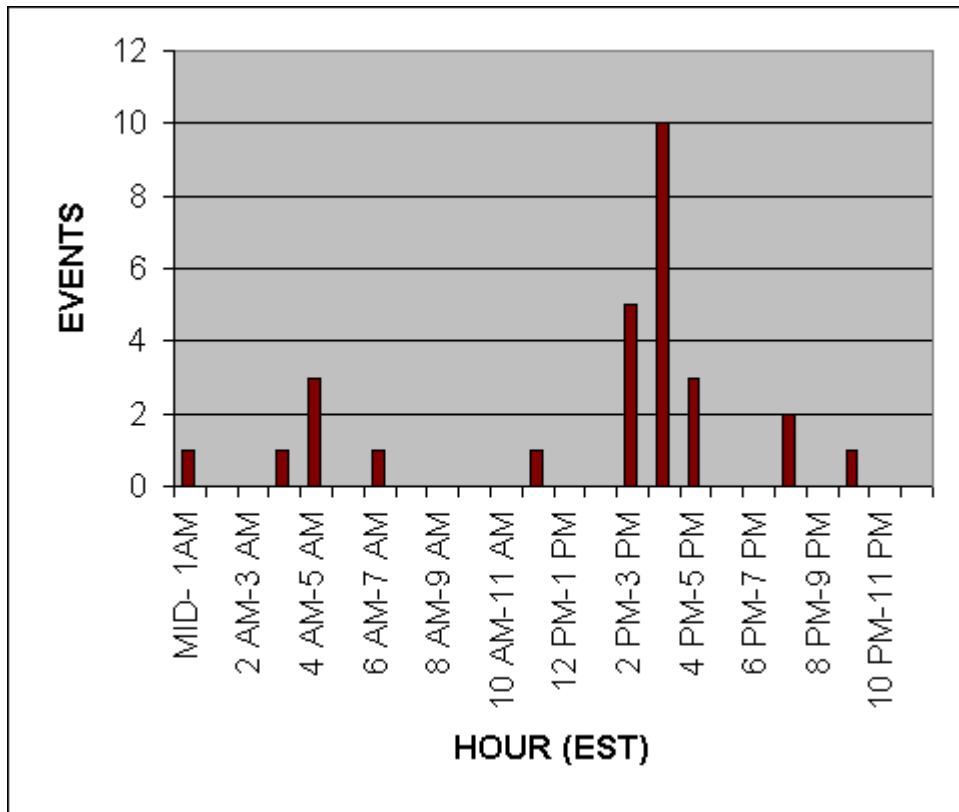


Figure 8. The hourly distribution of October-November tornadoes (1950-2000).

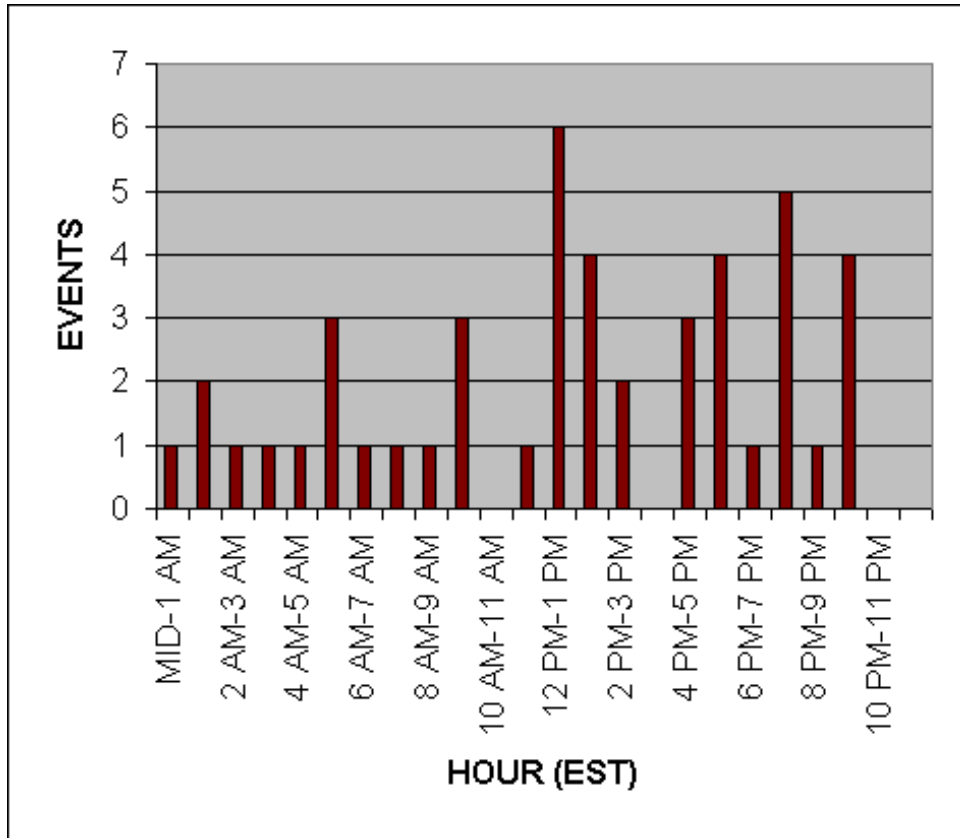


Figure 9. The hourly distribution of August-September tornadoes (1950-2000).

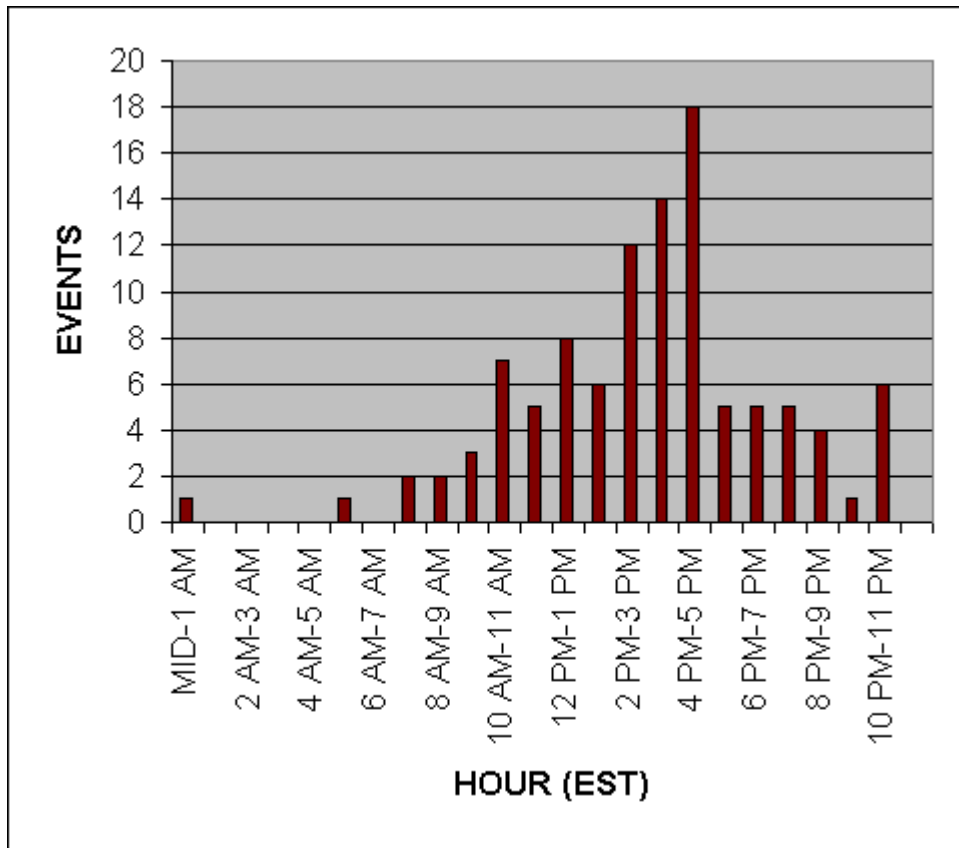


Figure 10. The hourly distribution of March-June tornadoes (1950-2000).

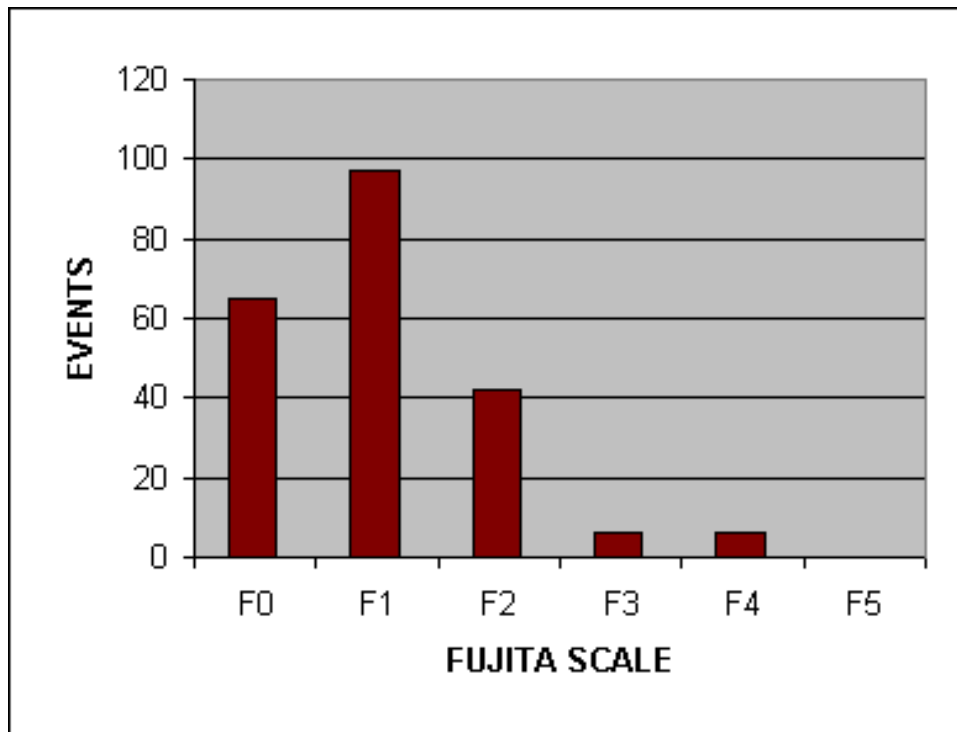


Figure 11. Tornado distribution by F-Scale (1950-2000).

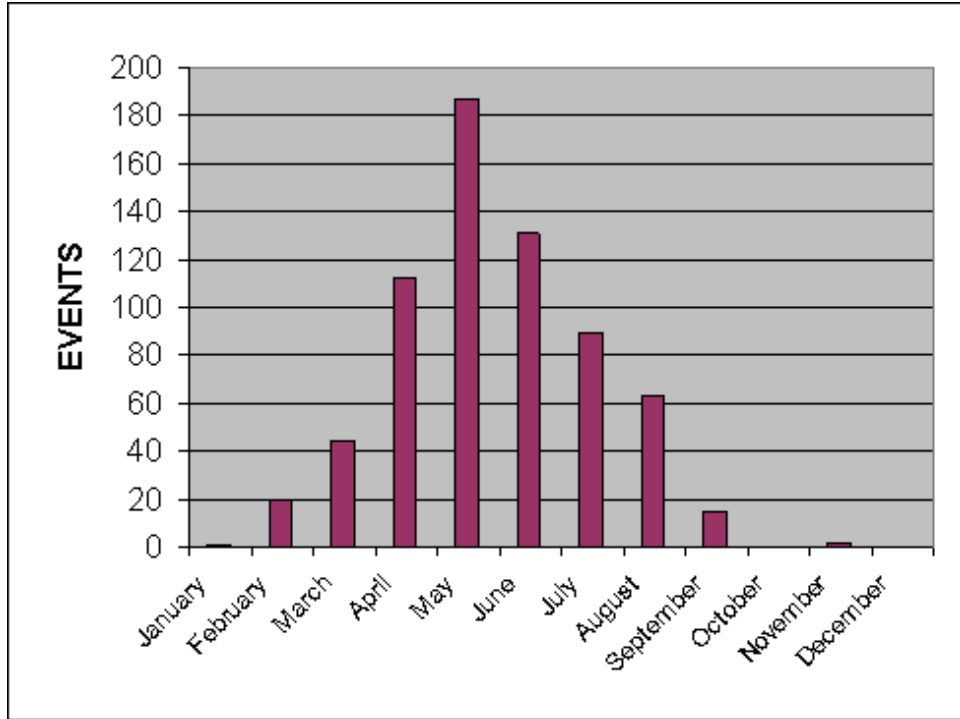


Figure 12. The monthly distribution of severe hail events (1955-2000).

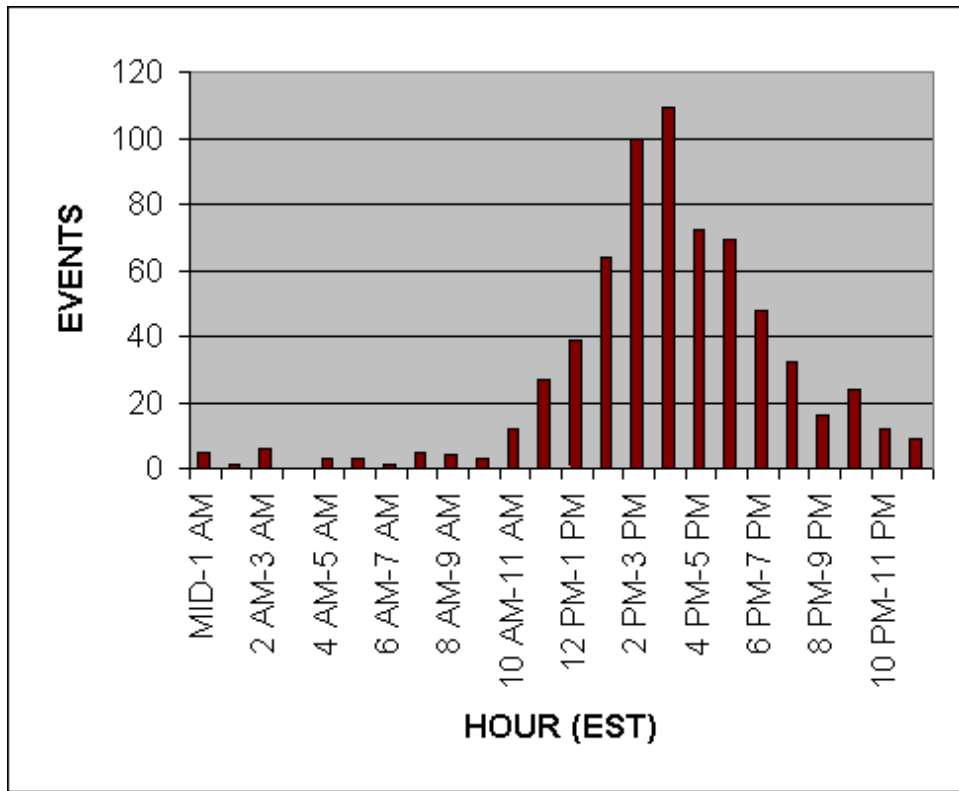


Figure 13. The hourly distribution of severe hail events (1955-2000).

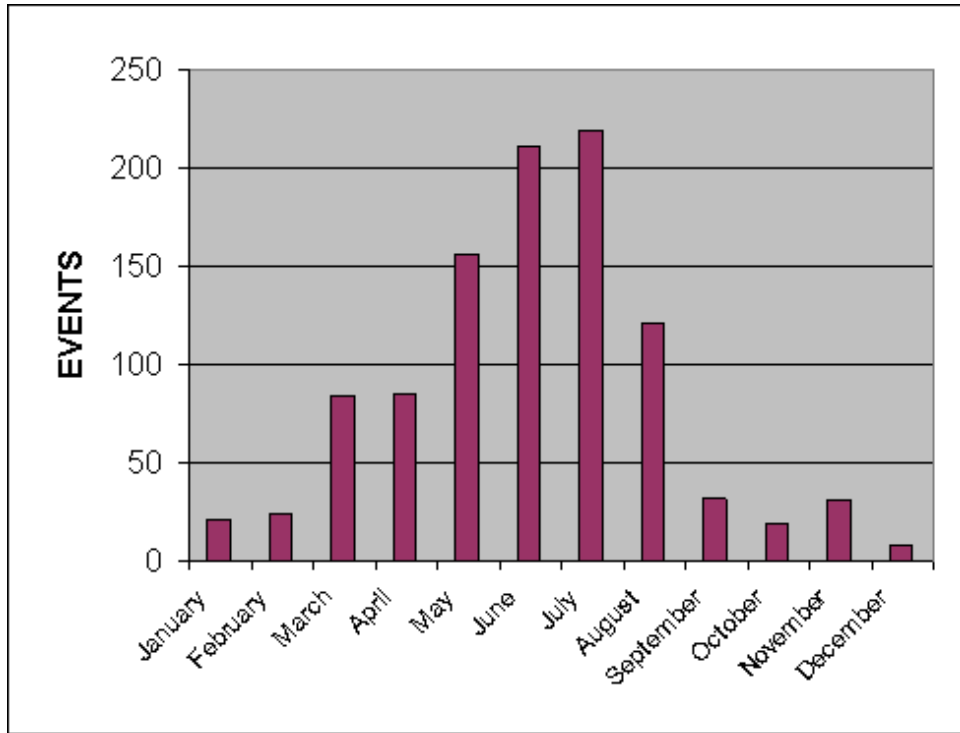


Figure 14. The monthly distribution of severe wind events (1955-2000).

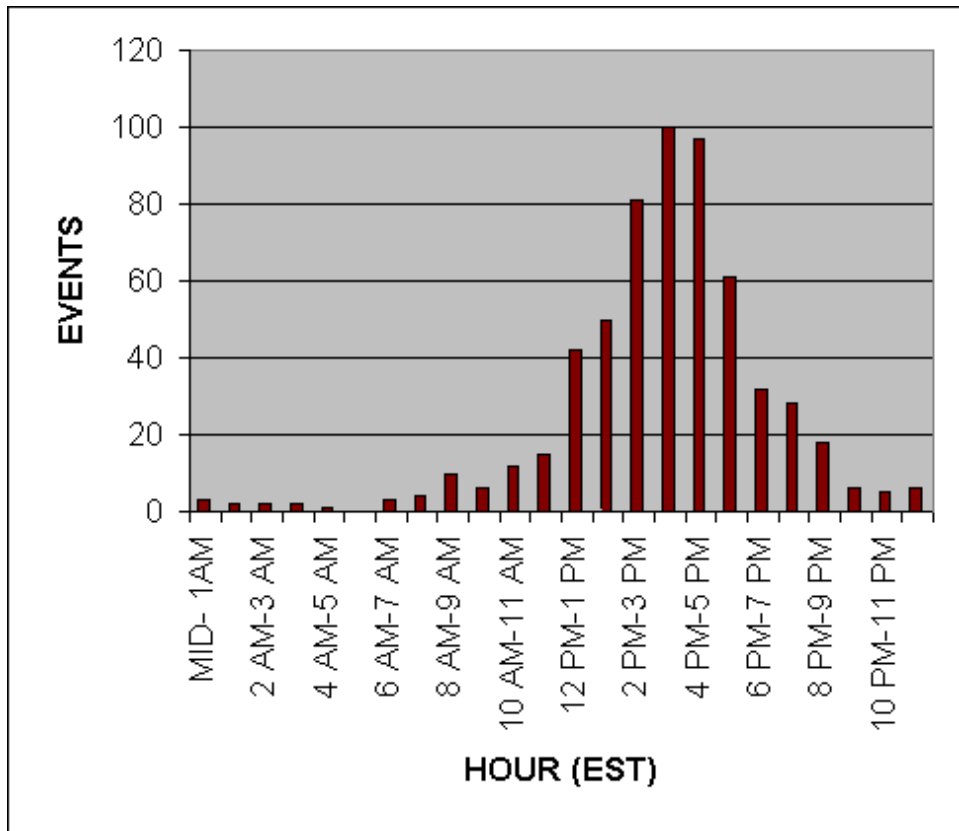


Figure 15. The hourly distribution of May-July severe wind events (1955-2000).

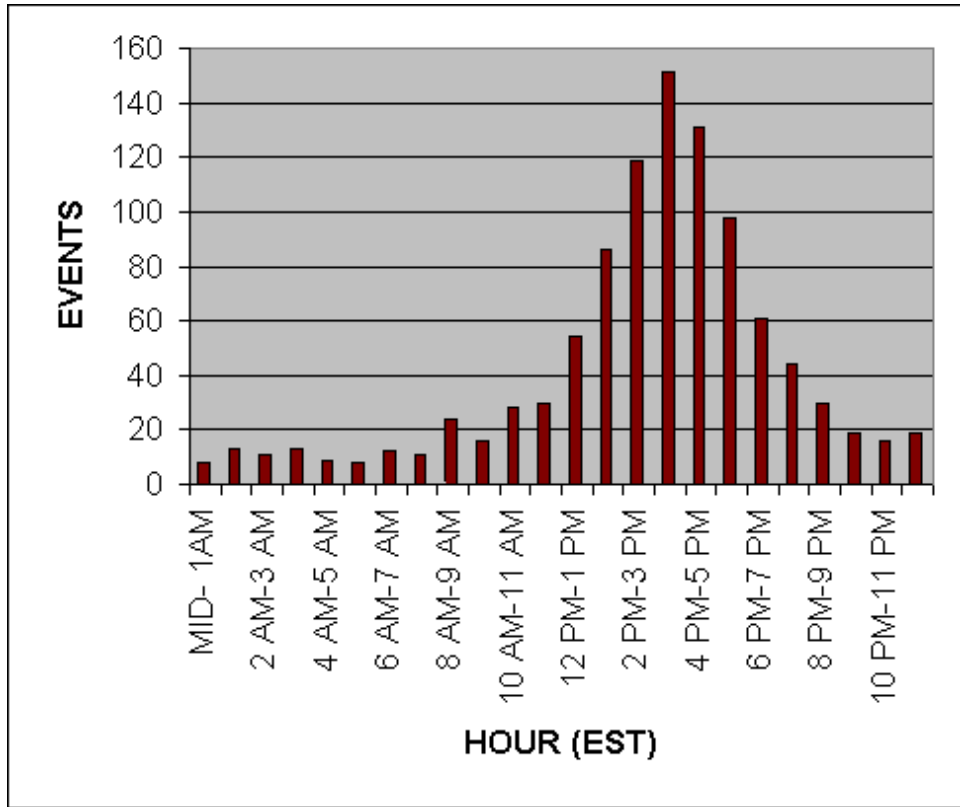


Figure 16. The hourly distribution of all severe wind events (1955-2000).

NWS ER 46 An Objective Method of Forecasting Summertime Thunderstorms. John F. Townsend and Russell J. Younkin. May 1972. (COM-72-10765).

NWS ER 47 An Objective Method of Preparing Cloud Cover Forecasts. James R. Sims. August 1972. (COM-72-11382).

NWS ER 48 Accuracy of Automated Temperature Forecasts for Philadelphia as Related to Sky Condition and Wind Direction. Robert B. Wassall. September 1972. (COM-72-11473).

NWS ER 49 A Procedure for Improving National Meteorological Center Objective Precipitation Forecasts. Joseph A. Ronco, Jr. November 1972. (COM-73-10132).

NWS ER 50 PEATMOS Probability of Precipitation Forecasts as an Aid in Predicting Precipitation Amounts. Stanley E. Wasserman. December 1972. (COM-73-10243).

NWS ER 51 Frequency and Intensity of Freezing Rain/Drizzle in Ohio. Marvin E. Miller. February 1973. (COM-73-10570).

NWS ER 52 Forecast and Warning Utilization of Radar Remote Facsimile Data. Robert E. Hamilton. July 1973. (COM-73-11275).

NWS ER 53 Summary of 1969 and 1970 Public Severe Thunderstorm and Tornado Watches Within the National Weather Service, Eastern Region. Marvin E. Miller and Lewis H. Ramey. October 1973. (COM-74-10160).

NWS ER 54 A Procedure for Improving National Meteorological Center Objective Precipitation Forecasts - Winter Season. Joseph A. Ronco, Jr. November 1973. (COM-74-10200).

NWS ER 55 Cause and Prediction of Beach Erosion. Stanley E. Wasserman and David B. Gilhousen. December 1973. (COM-74-10036).

NWS ER 56 Biometeorological Factors Affecting the Development and Spread of Planet Diseases. V.J. Valli. July 1974. (COM-74-11625/AS).

NWS ER 57 Heavy Fall and Winter Rain In The Carolina Mountains. David B. Gilhousen. October 1974. (COM-74-11761/AS).

NWS ER 58 An Analysis of Forecasters' Propensities In Maximum/Minimum Temperature Forecasts. I. Randy Racer. November 1974. (COM-75-10063/AS).

NWS ER 59 Digital Radar Data and its Application in Flash Flood Potential. David D. Sisk. March 1975. (COM-75-10582/AS).

NWS ER 60 Use of Radar Information in Determining Flash Flood Potential. Stanley E. Wasserman. December 1975. (PB250071/AS).

NWS ER 61 Improving Short-Range Precipitation Guidance During the Summer Months. David B. Gilhousen. March 1976. (PB256427).

NWS ER 62 Locally Heavy Snow Downwind from Cooling Towers. Reese E. Otts. December 1976. (PB263390/AS).

NWS ER 63 Snow in West Virginia. Marvin E. Miller. January 1977. (PB265419/AS).

NWS ER 64 Wind Forecasting for the Monongahela National Forest. Donald E. Risher. August 1977. (PB272138/AS).

NWS ER 65 A Procedure for Spraying Spruce Budworms in Maine during Stable Wind Conditions. Monte Glovinsky. May 1980. (PB80-203243).

NWS ER 66 Contributing Factors to the 1980-81 Water Supply Drought, Northeast U.S. Solomon G. Summer. June 1981. (PB82-172974).

NWS ER 67 A Computer Calculation and Display System for SLOSH Hurricane Surge Model Data. John F. Townsend. May 1984. (PB84-198753).

NWS ER 68 A Comparison Among Various Thermodynamic Parameters for the Prediction of Convective Activity. Hugh M. Stone. April 1985. (PB85-206217/AS).

NWS ER 69 A Comparison Among Various Thermodynamic Parameters for the Prediction of Convective Activity, Part II. Hugh M. Stone. December 1985. (PB86-142353/AS).

NWS ER 70 Hurricane Gloria's Potential Storm Surge. Anthony G. Gigi and David A. Wert. July 1986. (PB86-226644/AS).

NWS ER 71 Washington Metropolitan Wind Study 1981-1986. Clarence Burke, Jr. and Carl C. Ewald. February 1987. (PB87-151908/AS).

NWS ER 72 Mesoscale Forecasting Topics. Hugh M. Stone. March 1987. (PB87-180246/AS).

NWS ER 73 A Procedure for Improving First Period Model Output Statistics Precipitation Forecasts. Antonio J. Lacroix and Joseph A. Ronco, Jr. April 1987. (PB87-180238/AS).

NWS ER 74 The Climatology of Lake Erie's South Shoreline. John Kwiatkowski. June 1987. (PB87-205514/AS).

NWS ER 75 Wind Shear as a Predictor of Severe Weather for the Eastern United States. Hugh M. Stone. January 1988. (PB88-157144).

NWS ER 76 Is There A Temperature Relationship Between Autumn and the Following Winter? Anthony Gigi. February 1988. (PB88-173224).

NWS ER 77 River Stage Data for South Carolina. Clara Cillentine. April 1988. (PB88-201991/AS).

NWS ER 78 National Weather Service Philadelphia Forecast Office 1987 NOAA Weather Radio Survey & Questionnaire. Robert P. Wanton. October 1988. (PB89-111785/AS).

NWS ER 79 An Examination of NGM Low Level Temperature. Joseph A. Ronco, Jr. November 1988. (PB89-122543/AS).

NWS ER 80 Relationship of Wind Shear, Buoyancy, and Radar Tops to Severe Weather 1988. Hugh M. Stone. November 1988. (PB89-1222419/AS).

NWS ER 81 Relation of Wind Field and Buoyancy to Rainfall Inferred from Radar. Hugh M. Stone. April 1989. (PB89-208326/AS).

NWS ER 82 Second National Winter Weather Workshop, 26-30 Sept. 1988: Postprints. Laurence G. Lee. June 1989. (PB90-147414/AS).

NWS ER 83 A Historical Account of Tropical Cyclones that Have Impacted North Carolina Since 1586. James D. Stevenson. July 1990. (PB90-259201).

NWS ER 84 A Seasonal Analysis of the Performance of the Probability of Precipitation Type Guidance System. George J. Maglaras and Barry S. Goldsmith. September 1990. (PB93-160802).

NWS ER 85 The Use of ADAP to Examine Warm and Quasi-Stationary Frontal Events in the Northeastern United States. David R. Vallee. July 1991. (PB91-225037).

NWS ER 86 Rhode Island Hurricanes and Tropical Storms A Fifty-Six Year Summary 1936-0991. David R. Vallee. March 1993. (PB93-162006).

NWS ER 87 Post-print Volume, Third National Heavy Precipitation Workshop, 16-20 Nov. 1992. April 1993. (PB93-186625).

NWS ER 88 A Synoptic and Mesoscale Examination of the Northern New England Winter Storm of 29-30 January 1990. Robert A. Marine and Steven J. Capriola. July 1994. (PB94-209426).

NWS ER 89 An Initial Comparison of Manual and Automated Surface Observing System Observations at the Atlantic City, New Jersey, International Airport. James C. Hayes and Stephan C. Kuhl. January 1995.

NWS ER 90 Numerical Simulation Studies of the Mesoscale Environment Conducive to the Raleigh Tornado. Michael L. Kaplan, Robert A. Rozumalski, Ronald P. Weglarz, Yuh-Lang Lin, Steven Businger, and Rodney F. Gonski. November 1995.

NWS ER 91 A Climatology of Non-convective High Wind Events in Western New York State. Thomas A. Niziol and Thomas J. Paone. April 2000.

NWS ER 92 Tropical Cyclones Affecting North Carolina Since 1586 - An Historical Perspective. James E. Hudgins. April 2000.

NWS ER 93 A Severe Weather Climatology for the Wilmington, North Carolina WFO County Warning Area. Carl R., Morgan. October 2001.

NOAA SCIENTIFIC AND TECHNICAL PUBLICATIONS

The National Oceanic and Atmospheric Administration was established as part of the Department of Commerce on October 3, 1970. The mission responsibilities of NOAA are to assess the socioeconomic impact of natural and technological changes in the environment and to monitor and predict the state of the solid Earth, the oceans and their living resources, the atmosphere, and the space environment of the Earth.

The major components of NOAA regularly produce various types of scientific and technical information in the following kinds of publications:

PROFESSIONAL PAPERS--Important definitive research results, major techniques, and special investigations.

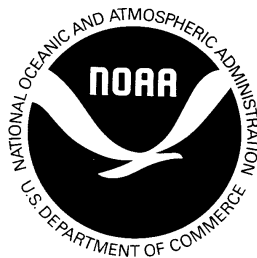
CONTRACT AND GRANT REPORTS--Reports prepared by contractors or grantees under NOAA sponsorship.

ATLAS--Presentation of analyzed data generally in the form of maps showing distribution of rainfall, chemical and physical conditions of oceans and atmosphere, distribution of fishes and marine mammals, ionospheric conditions, etc.

TECHNICAL SERVICE PUBLICATIONS--Reports containing data, observations, instructions, etc. A partial listing includes data serials; prediction and outlook periodicals; technical manuals, training papers, planning reports, and information serials; and miscellaneous technical publications.

TECHNICAL REPORTS--Journal quality with extensive details, mathematical developments, or data listings.

TECHNICAL MEMORANDUMS--Reports of preliminary, partial, or negative research or technology results, interim instructions, and the like.



Information on availability of NOAA publications can be obtained from:

NATIONAL TECHNICAL INFORMATION SERVICE
U.S. DEPARTMENT OF COMMERCE
5285 PORT ROYAL ROAD
SPRINGFIELD, VA 22161