



# Weekly Weather Update

2:30 PM CDT  
Thursday, January 6, 2022

Roger Erickson, *NWS Lake Charles*





## TOP STORY:

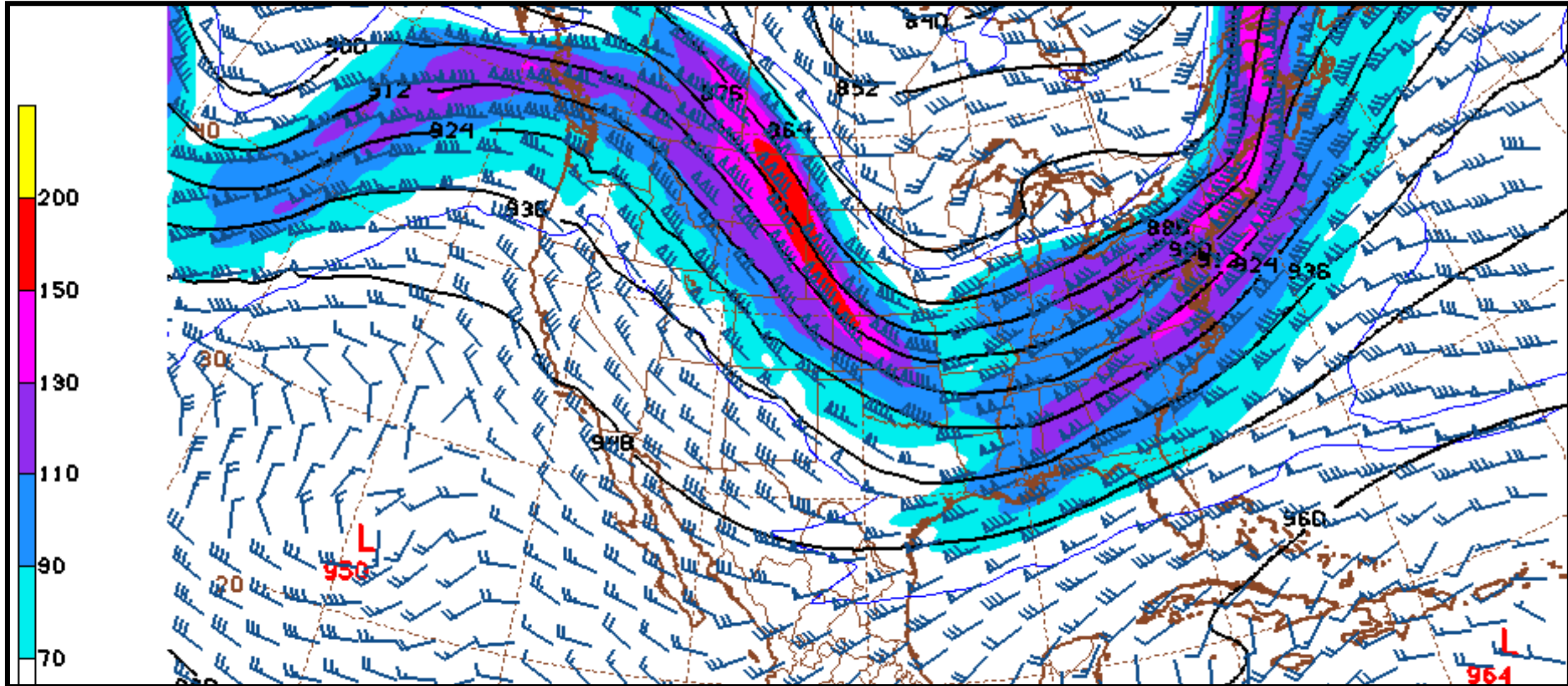
**Following a cool and dry Friday, rain returns to the forecast this weekend. There is a small chance for strong to severe storms this weekend.**

	Low Temperatures	High Temperatures	Chance For Rain
Friday	27-37 F	51-57 F	<10%
Saturday	36-49 F	68-74 F	45-65%
Sunday	62-66 F	72-77 F	65-85%
Monday	39-47 F	53-58 F	<10%
Tuesday	30-38 F	54-59 F	<10%
Wednesday	34-44 F	59-65 F	10-25%
Thursday	44-51 F	61-67 F	35%
Normals This Time of Year	37-43 F	58-62 F	30%-40%

# Upper Level Steering Patterns



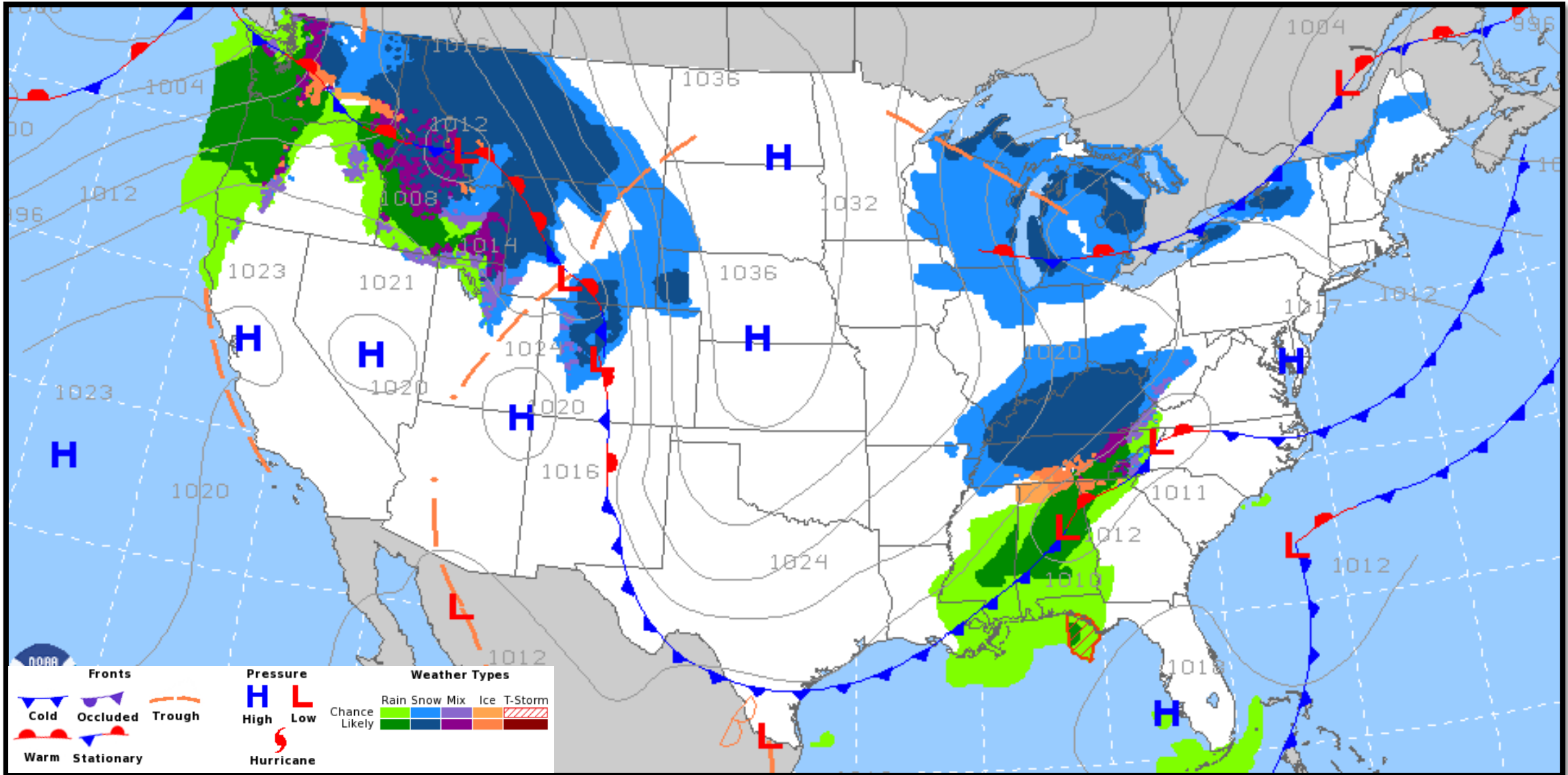
Lake Charles  
WEATHER FORECAST OFFICE



# Surface Weather Map with Fronts



Lake Charles  
WEATHER FORECAST OFFICE



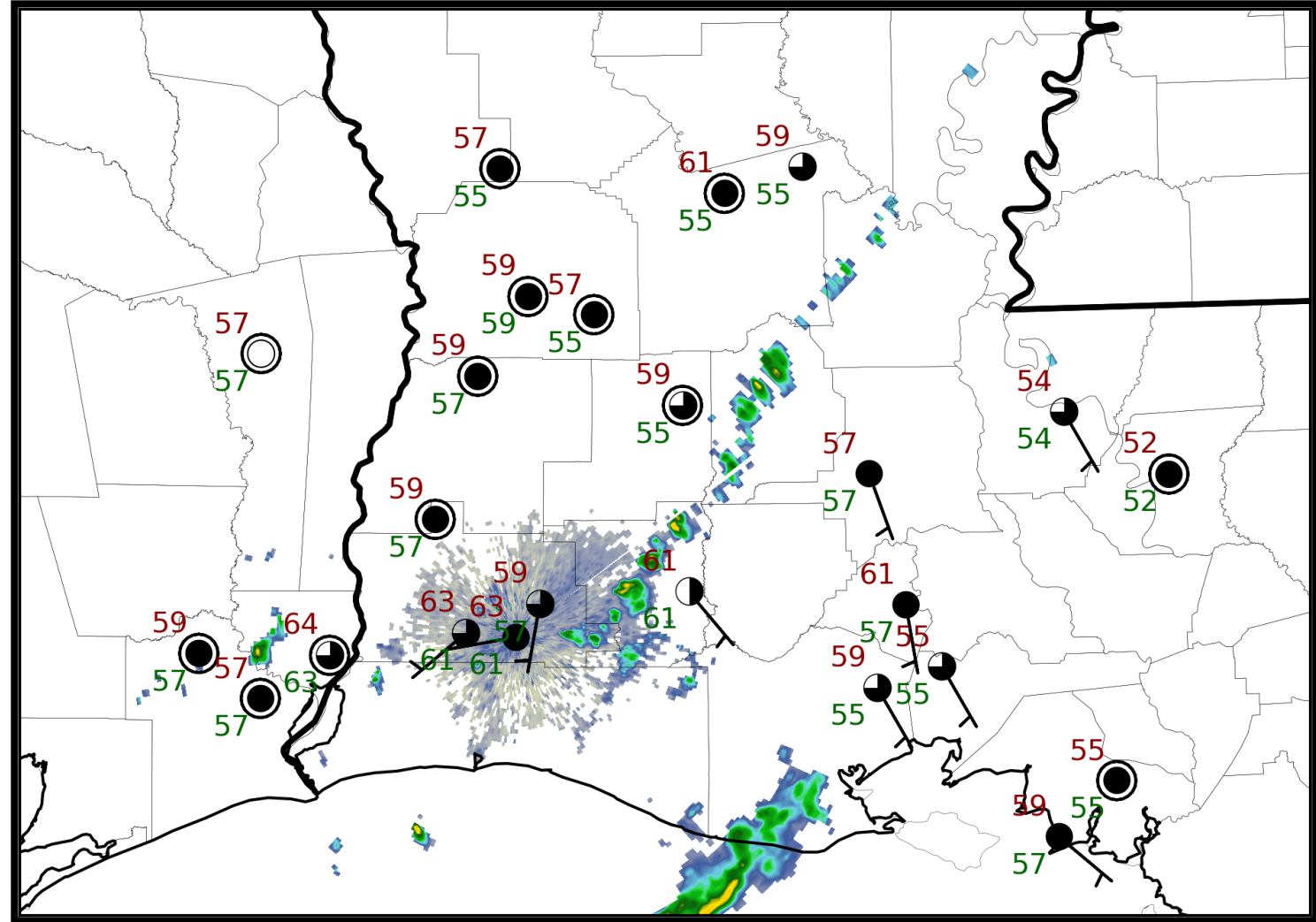


# 6 am Weather Observations



Lake Charles  
WEATHER FORECAST OFFICE

A thin line of showers was moving across the region. Temperatures were in the mid 50s to mid 60s. Winds were out of the south to southeast at 5 to 10 mph.

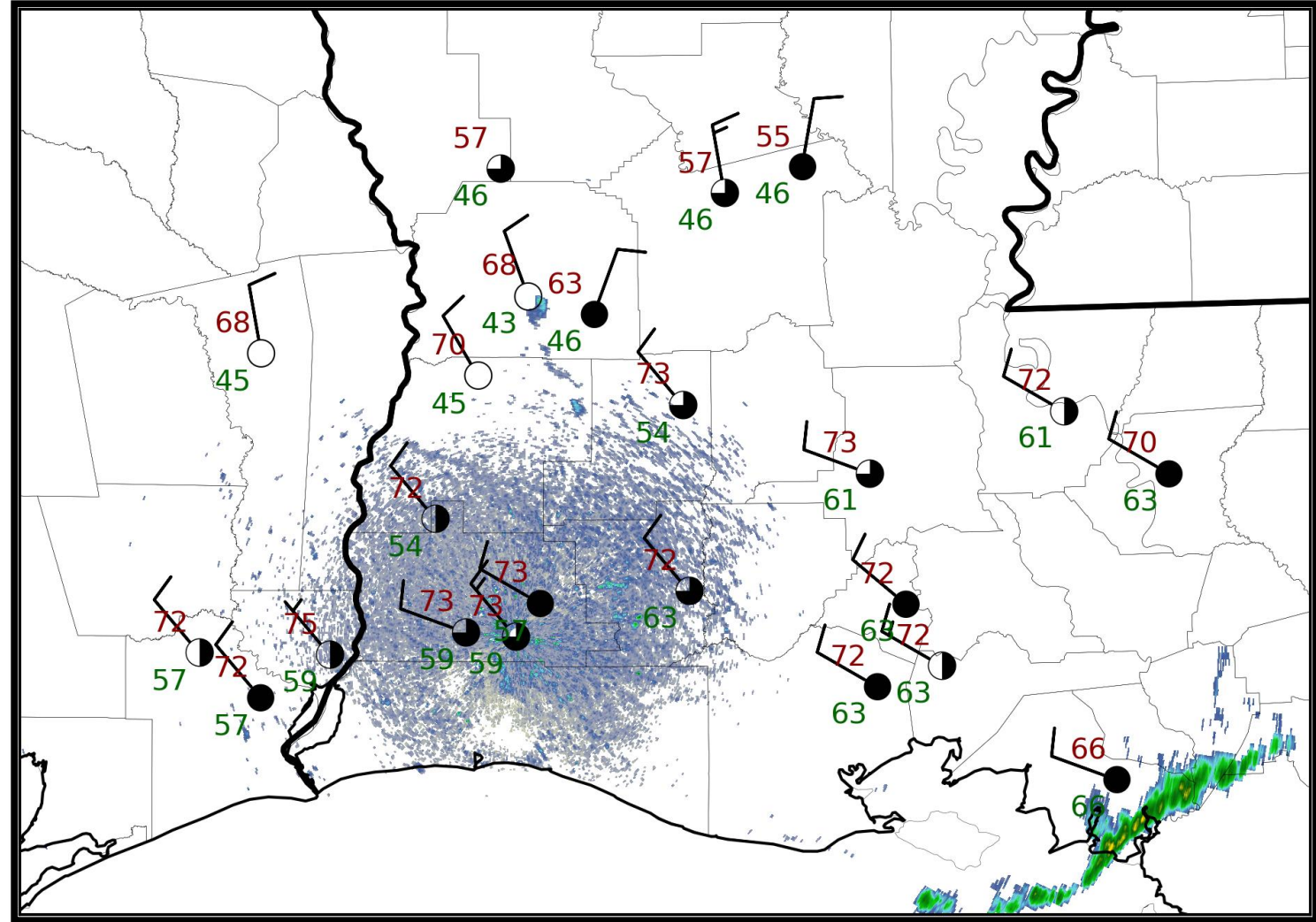


# 2 pm Weather Observations



Lake Charles  
WEATHER FORECAST OFFICE

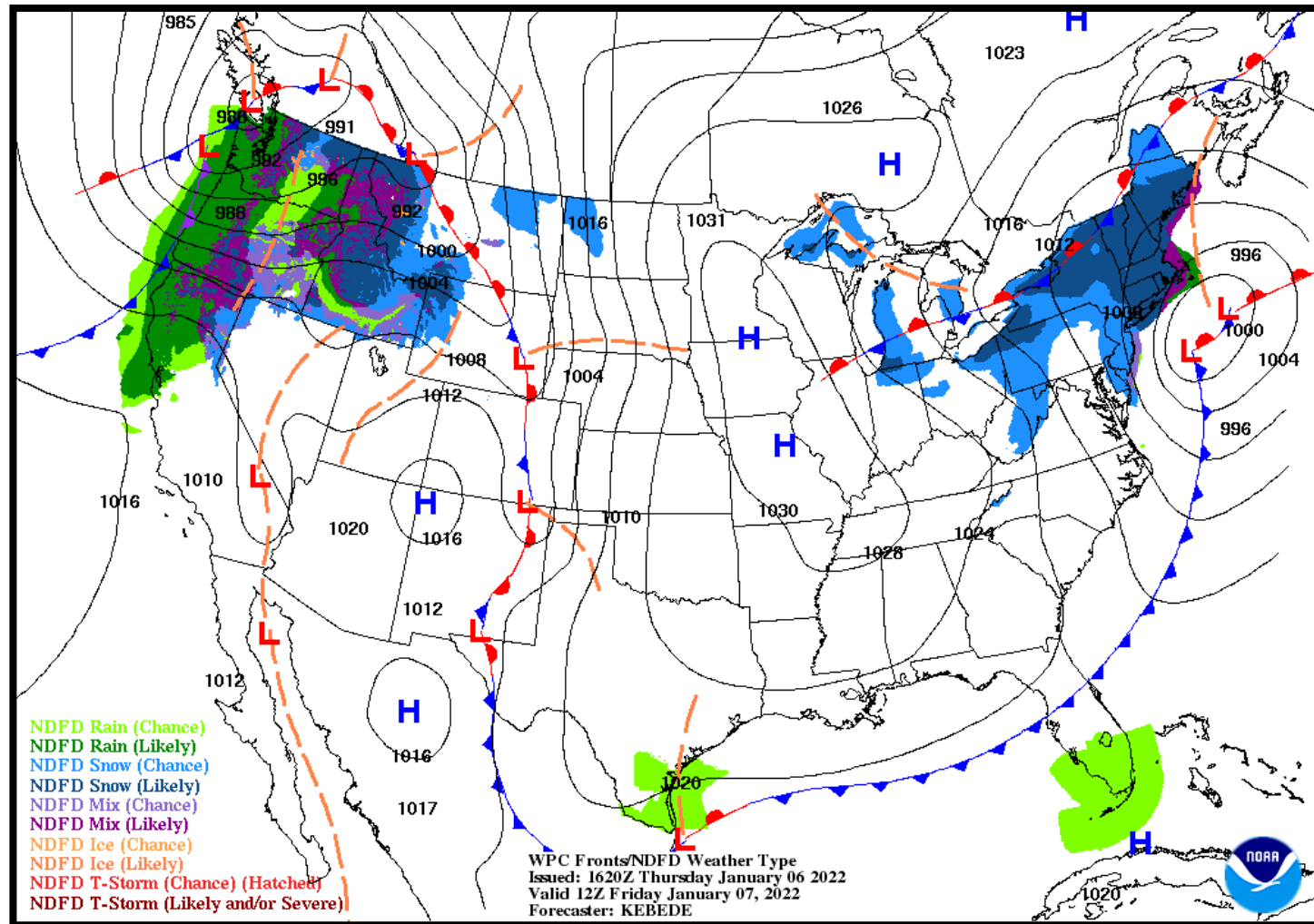
The thin lines of showers was near Morgan City.  
Temperatures were in the mid 50s to lower 70s. Winds were out of the northwest at 10 to 15 mph.





### NWS LCH REGIONAL WEATHER

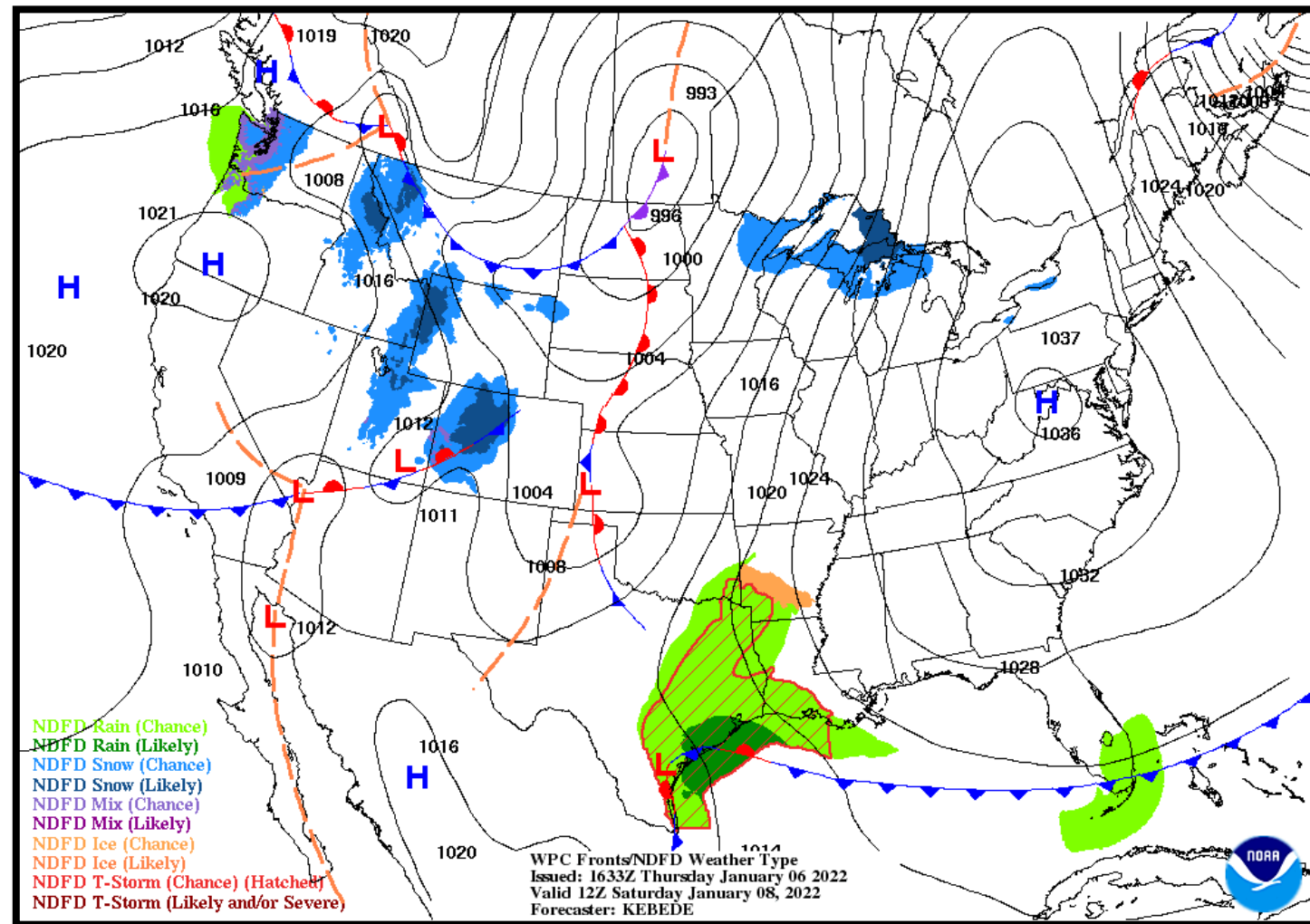
Low Temperature	27-37 F
High Temperature	51-57 F
Wind	ENE 5-10 mph
Rain Chances	<10%
Weather Hazards	Light Freeze





### NWS LCH REGIONAL WEATHER

Low Temperature	36-49 F
High Temperature	68-74 F
Wind	SE 10-15 mph
Rain Chances	45-65%
Weather Hazards	Thunderstorms





# Severe Weather Threat This Weekend

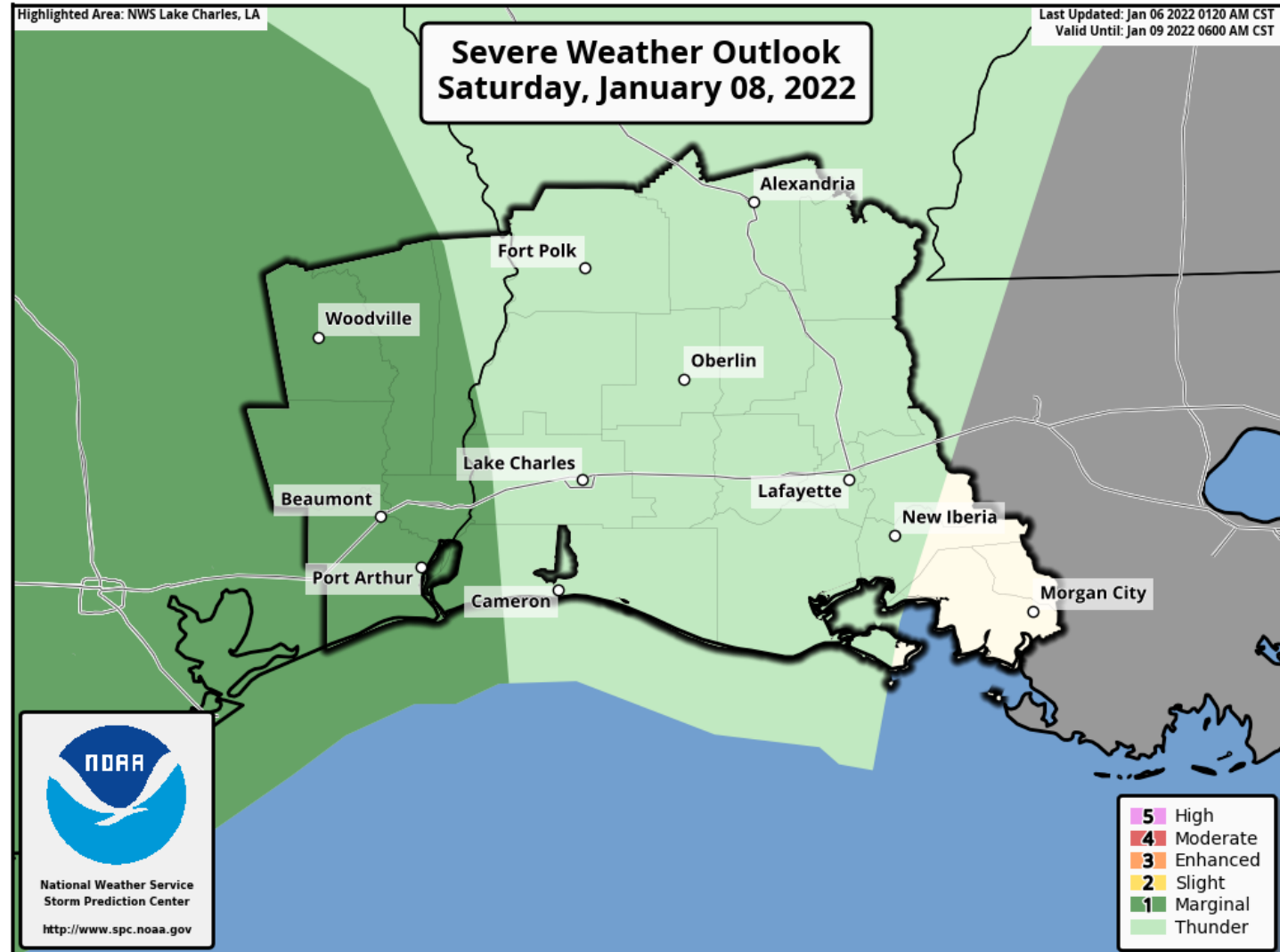


Lake Charles  
WEATHER FORECAST OFFICE

There is a marginal 5% risk for severe storms on Saturday in mainly southeast Texas.

This marginal 5% threat could extend into Sunday across our entire region.

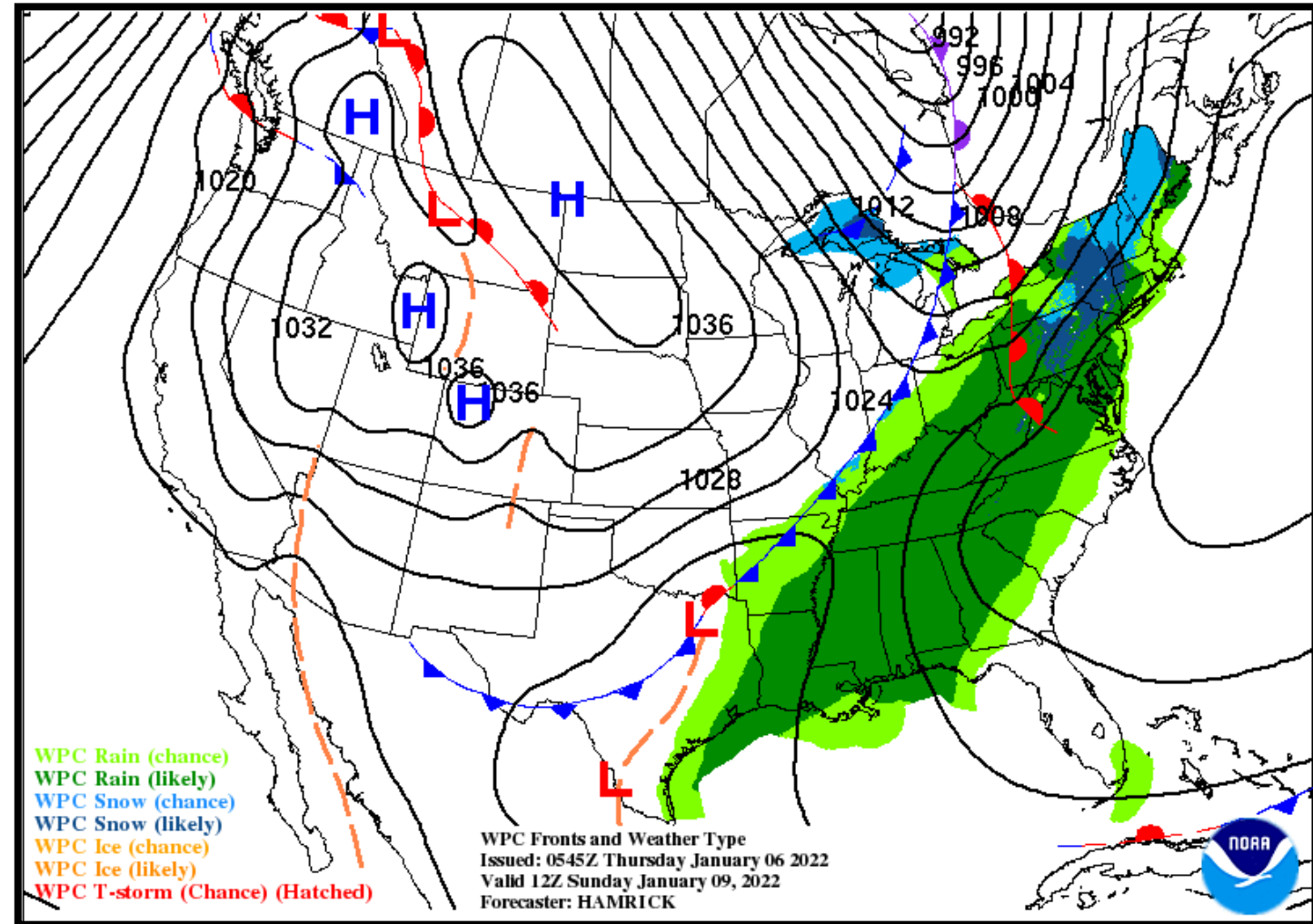
Damaging winds, hail, and tornadoes are the threats.





### NWS LCH REGIONAL WEATHER

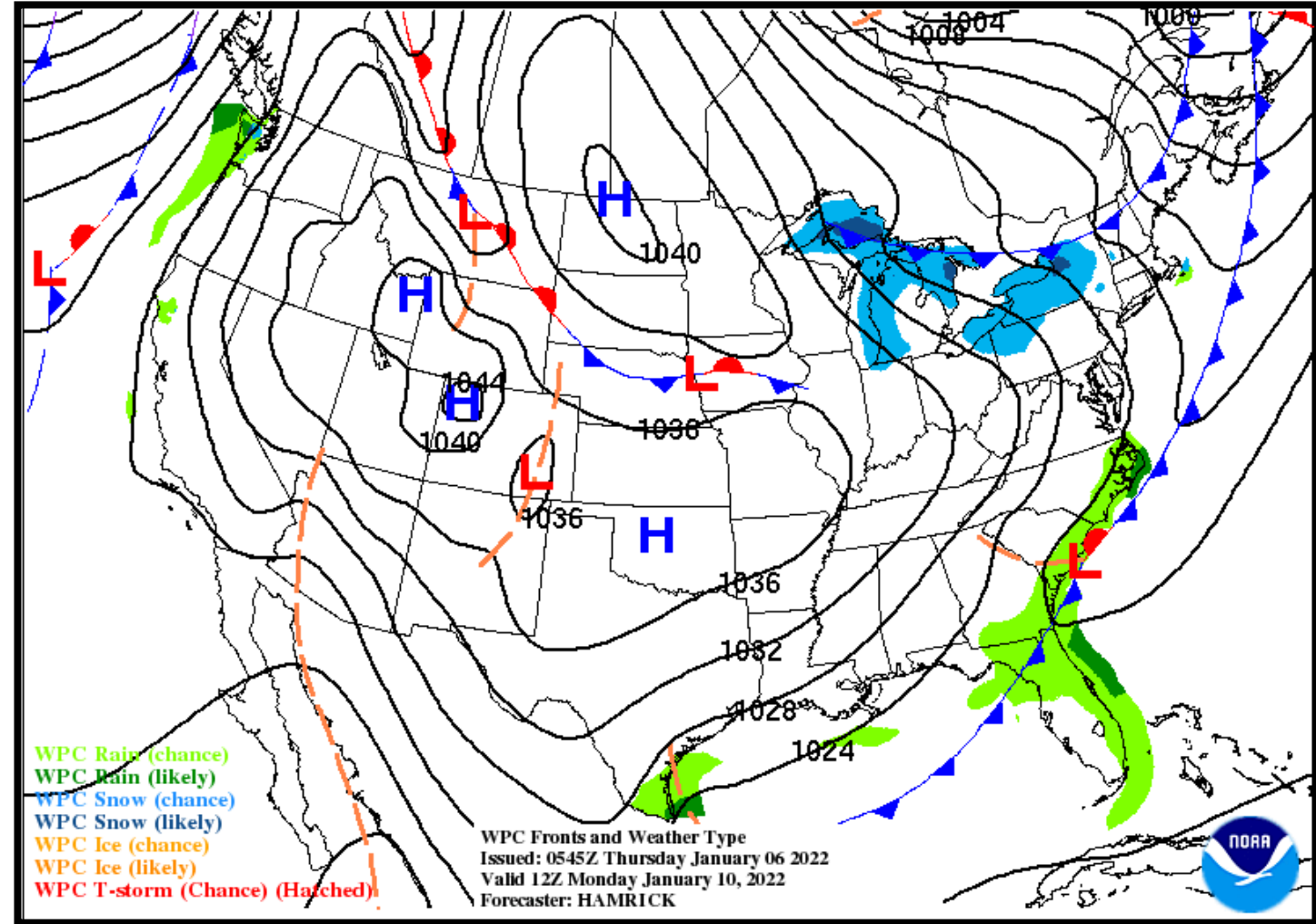
Low Temperature	62-66 F
High Temperature	72-77 F
Wind	SSW 10 mph
Rain Chances	65-85%
Weather Hazards	Thunderstorms





### NWS LCH REGIONAL WEATHER

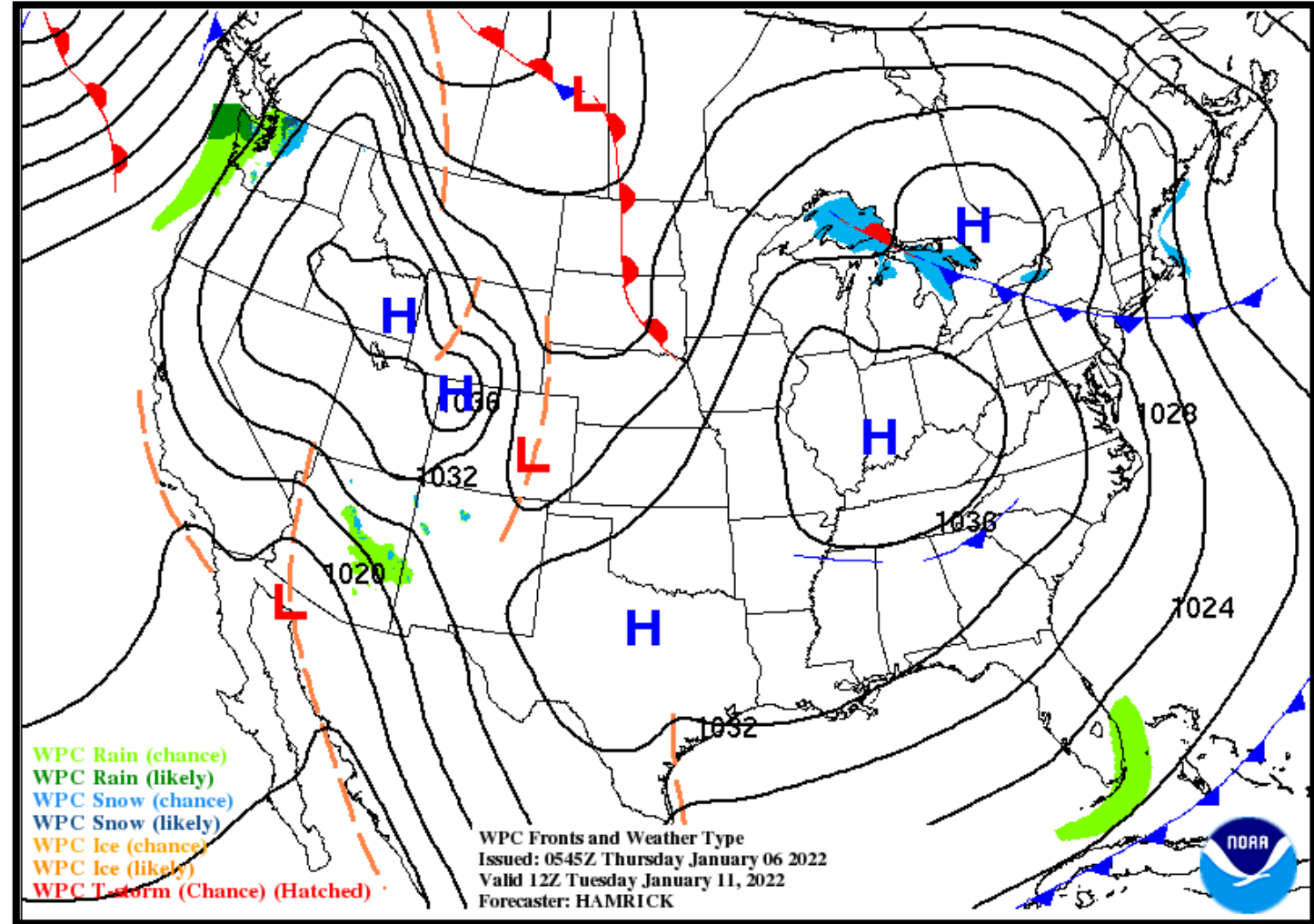
Low Temperature	39-47 F
High Temperature	53-58 F
Wind	NNE 10-15 mph
Rain Chances	<10%
Weather Hazards	None





### NWS LCH REGIONAL WEATHER

Low Temperature	30-38 F
High Temperature	54-59 F
Wind	NE 5-10 mph
Rain Chances	<10%
Weather Hazards	Light Freeze

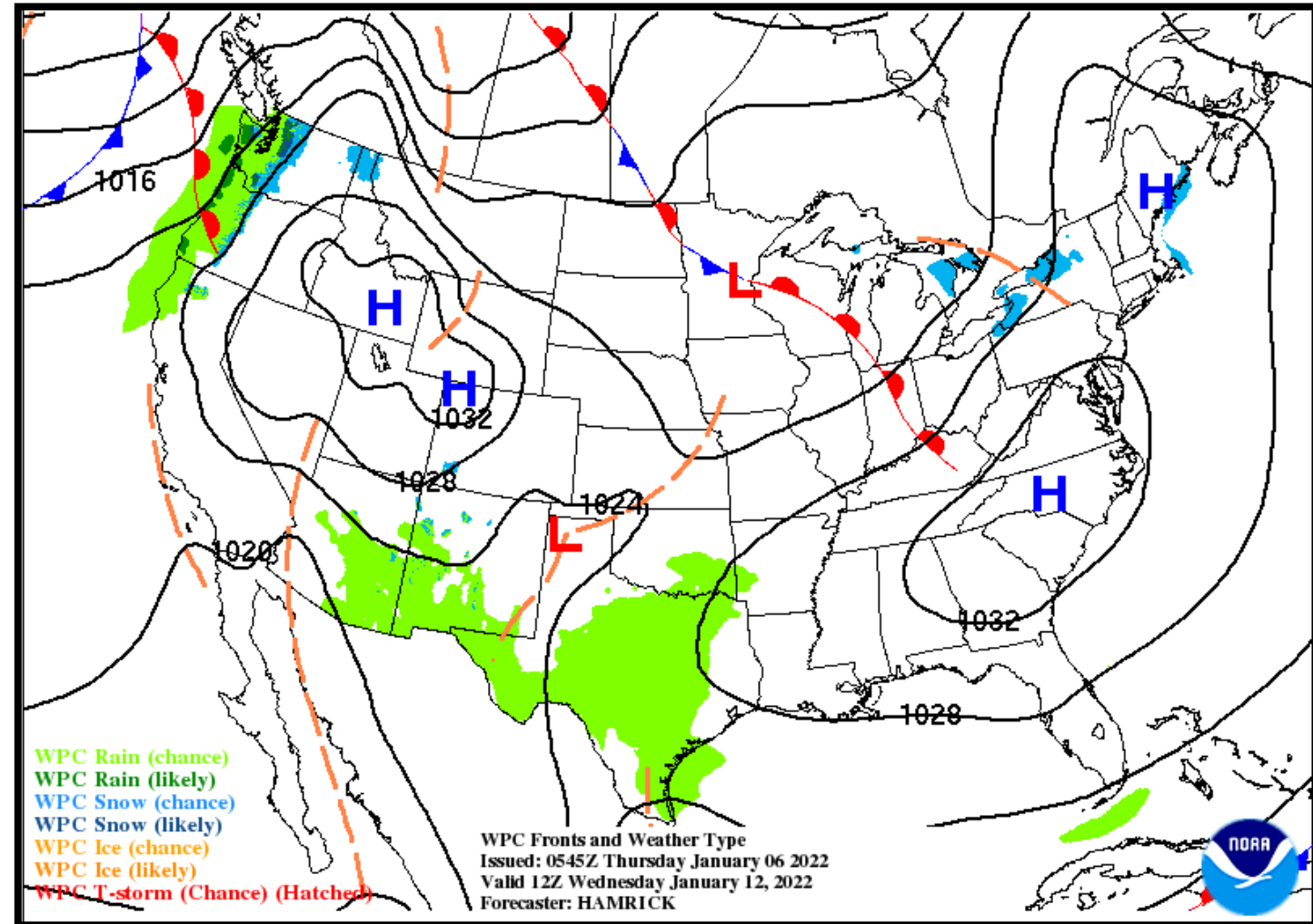






### NWS LCH REGIONAL WEATHER

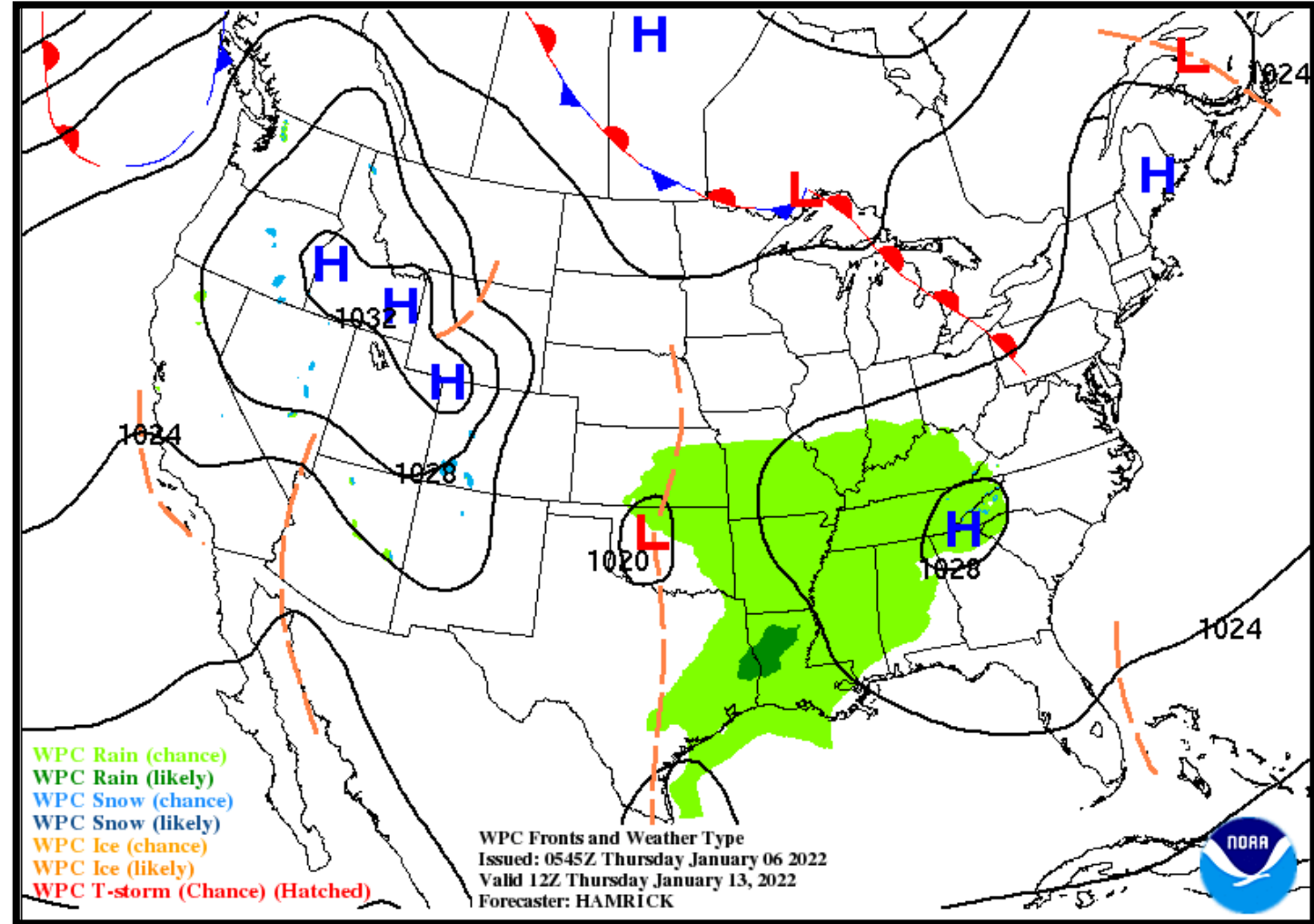
Low Temperature	34-44 F
High Temperature	59-65 F
Wind	E 5-10 mph
Rain Chances	10-25%
Weather Hazards	Thunderstorms





### NWS LCH REGIONAL WEATHER

Low Temperature	44-51 F
High Temperature	61-67 F
Wind	E 5-10 mph
Rain Chances	35%
Weather Hazards	Thunderstorms



# Weekly Weather Summary Table



Lake Charles  
WEATHER FORECAST OFFICE

Weather	Friday 01/07/22	Saturday 01/08/22	Sunday 01/09/22	Monday 01/10/22	Tuesday 01/11/22	Wednesday 01/12/22	Thursday 01/13/22
Rain Total	None	1.00-2.00"	0.50-1.00"	None	None	0.10-0.25"	0.10-0.25"
T-Storm/ Lightning	None	Scattered	Scattered	None	None	Isolated	Isolated
Tornado/Hail/ Dmg Wind	None	Marginal	Marginal	None	None	None	None
Wind	ENE 5-10 mph	SE 10-15 mph	SSW 10 mph	NNE 10-15 mph	NE 5-10 mph	E 5-10 mph	E 5-10 mph
Tides	Above Normal	Above Normal	Above Normal	Above Normal	Below Normal	Above Normal	Near Normal
Wave Height	Near: 1-4 ft Off: 4-5 ft	Near: 1-4 ft Off: 5-6 ft	Near: 1-4 ft Off: 5-6 ft	Near: 1-5 ft Off: 6-8 ft	Near: 1-4 ft Off: 5-7 ft	Near: 1-3 ft Off: 4-6 ft	Near: 1-4 ft Off: 4-5 ft
Temperature	Low: 27-37 F High: 51-57 F	Low: 36-49 F High: 68-74 F	Low: 62-66 F High: 72-77 F	Low: 39-47 F High: 53-58 F	Low: 30-38 F High: 54-59 F	Low: 34-44 F High: 59-65 F	Low: 44-51 F High: 61-67 F

Normal Low: 37-43 F  
Normal High: 58-62 F

Color Codes Except for Temperatures
Yellow = Low Threat
Orange = Moderate Threat
Red = High Threat

Color Codes For Temperatures
Yellow=5 F above normal
Orange=10 F above normal
Red=15 F above normal
Vry Lt Blue=5 F below normal
Lt Blue=10 F below normal
Blue=15 F below normal



- Friday will be cool and dry, with morning lows below freezing in parts of east Texas and central Louisiana.
- There is a marginal 5% threat for severe storms this weekend.
- After a dry and cool Monday and Tuesday, small rain chances return for Wednesday and Thursday next week.



