



# Severe Weather Briefing

**12 PM CST  
Tuesday February 14th**

**Doug Cramer**

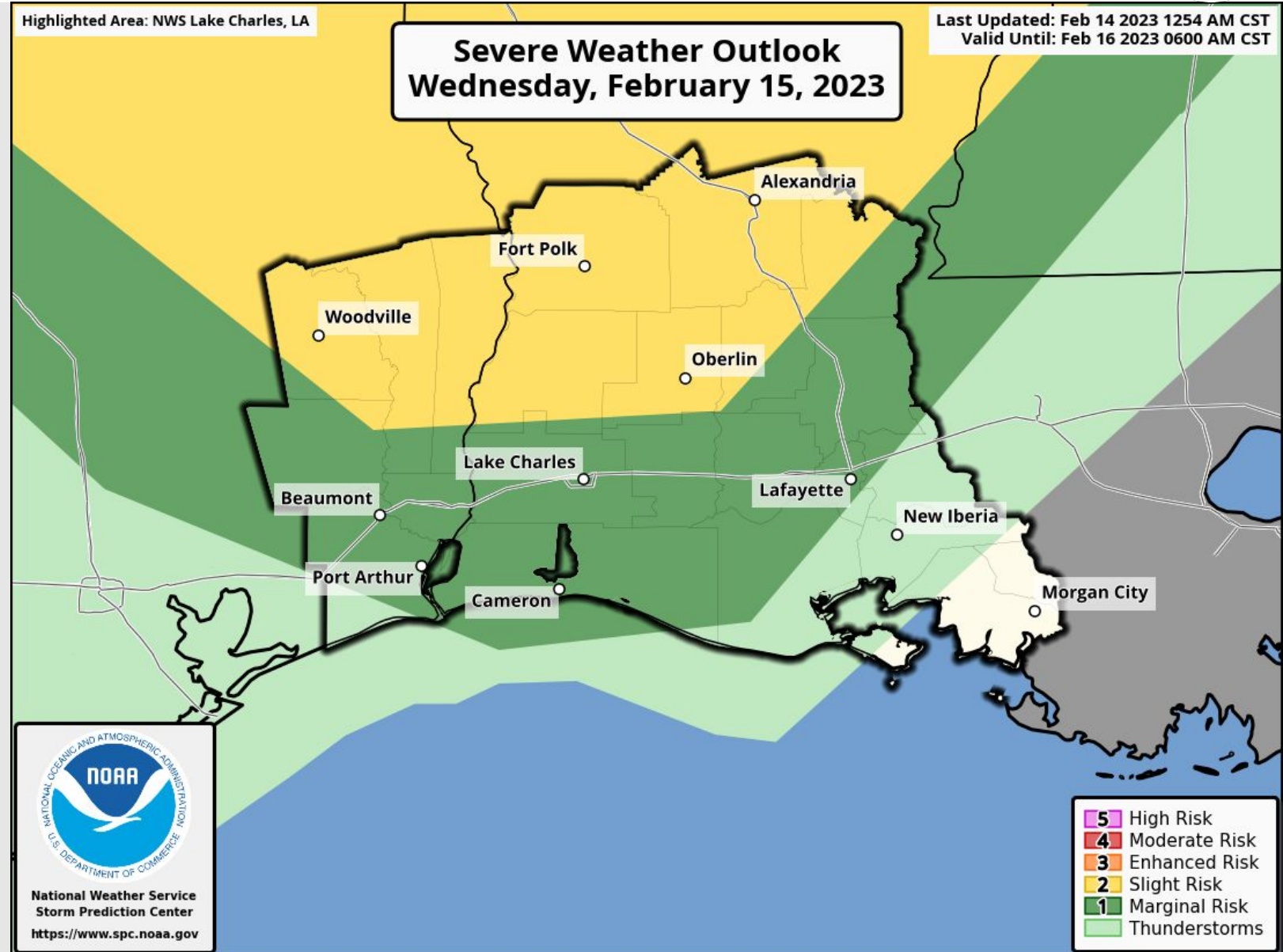


## Key Message:

- Slight risk for severe thunderstorms for areas roughly north of Highway 190
- Marginal risk for severe thunderstorms southeast TX and portions of southwest Louisiana.

## Timing:

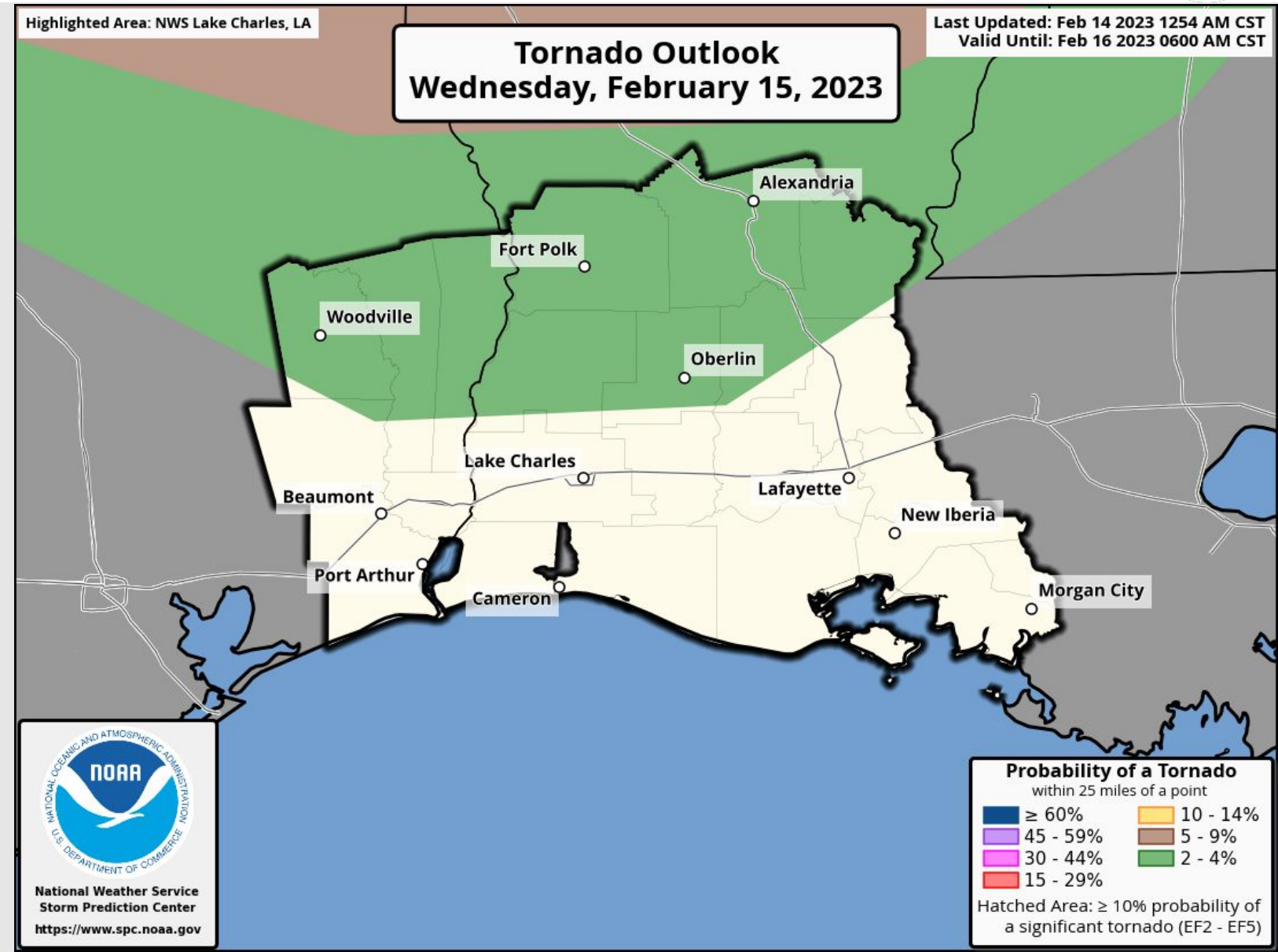
- Estimated start time - Late Wednesday Evening
- Peak Time - Early Thursday Morning
- End Time - Mid Day Thursday





## Key Message:

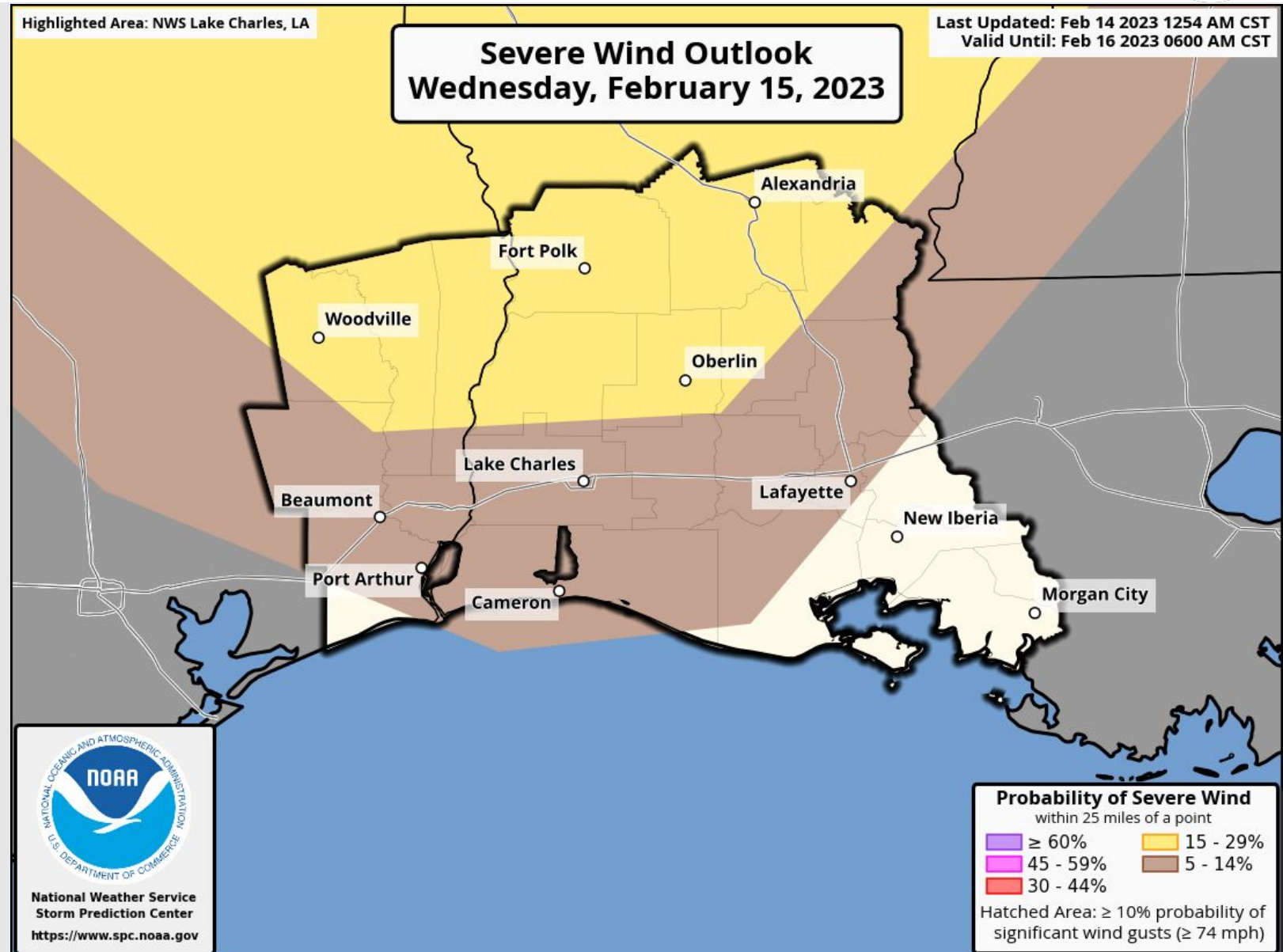
- Overall the risk for tornadoes is low.
- 2 - 4% roughly north of Highway 190
- 0-2% elsewhere





## Key Message:

- Damaging wind gusts is the primary risk.
- 15 - 29% roughly north of Highway 190
- 5 - 14% portions of SW LA and SE TX
- 0 - 5% elsewhere

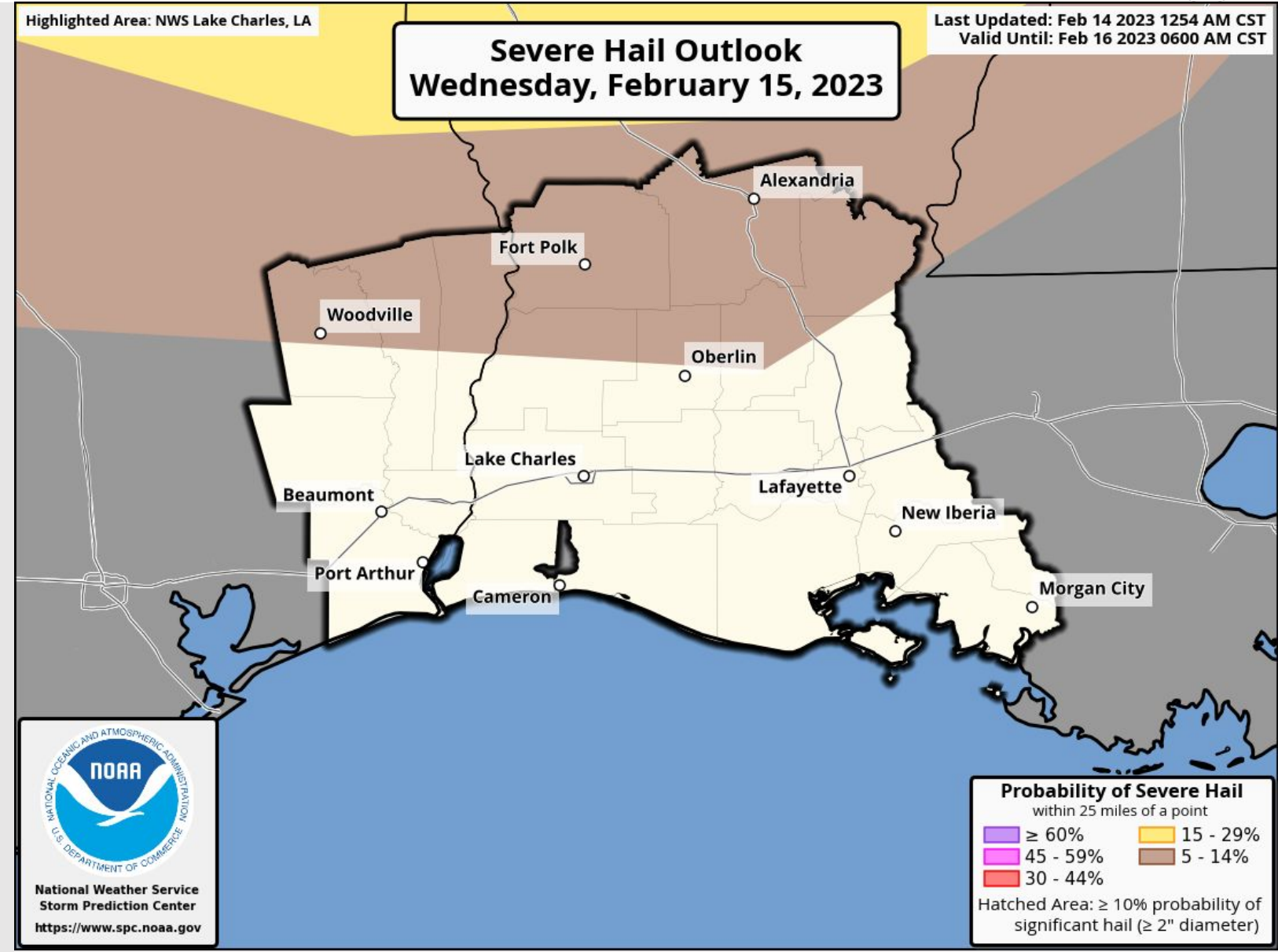


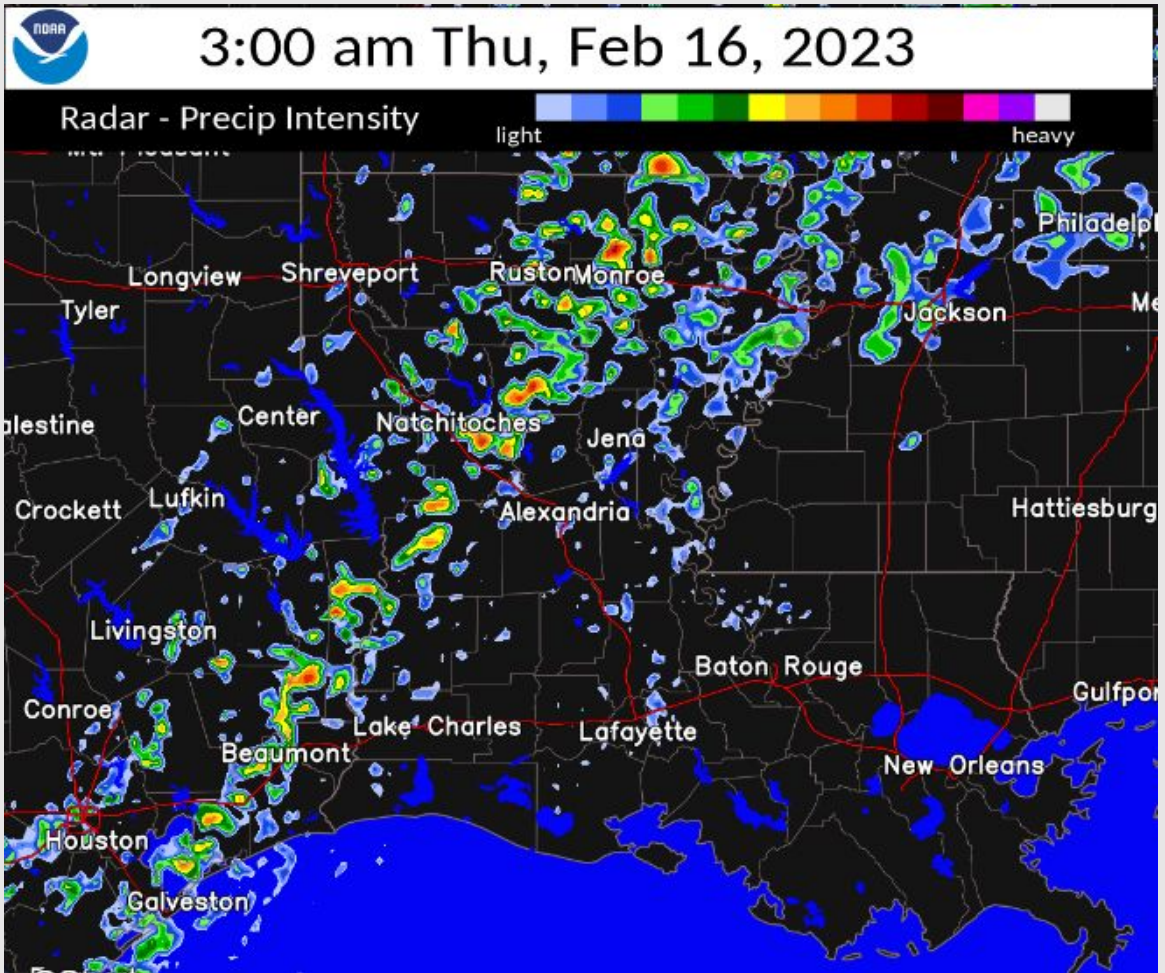




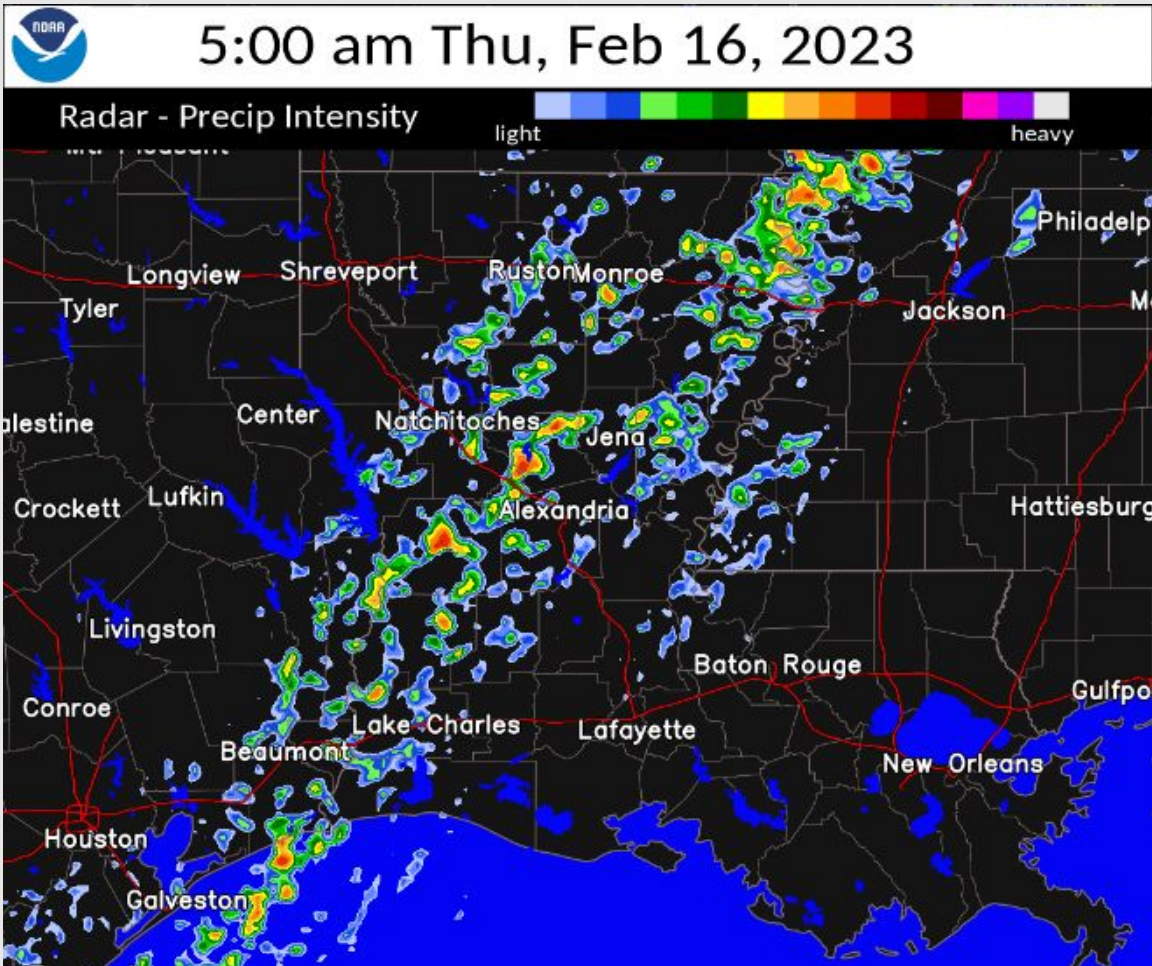
## Key Message:

- Large hail risk is low.
- 5 - 14% northern part of forecast area.
- 0 - 5% elsewhere















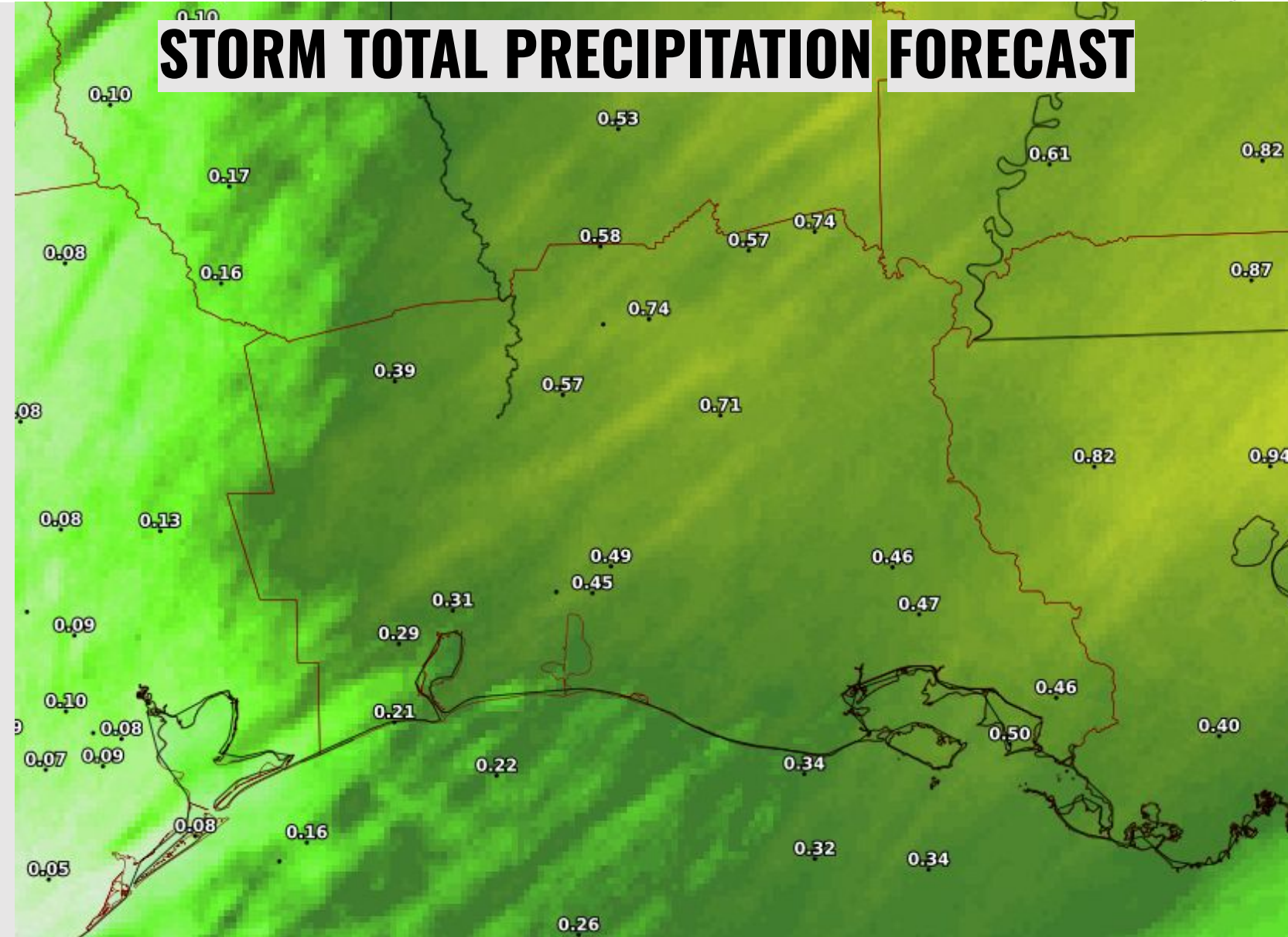


## Key Message:

- Flood risk remains very low.
- Rainfall forecast 0.25 to 1.00 inch.



## STORM TOTAL PRECIPITATION FORECAST



## Key Message:

- South Winds 20 to 25 mph
- South Gusts up to 35 mph.

## Small Craft Advisory



Marine zones 15 to 20 knots with 30 kt gusts  
Seas ranging from 4 to 9 feet



Source: Del. Mass. Online, Earthstar Geographics, CNES/Airbus DS, USDA, USGS, AeroGRID, IGN, and the GIS User Community