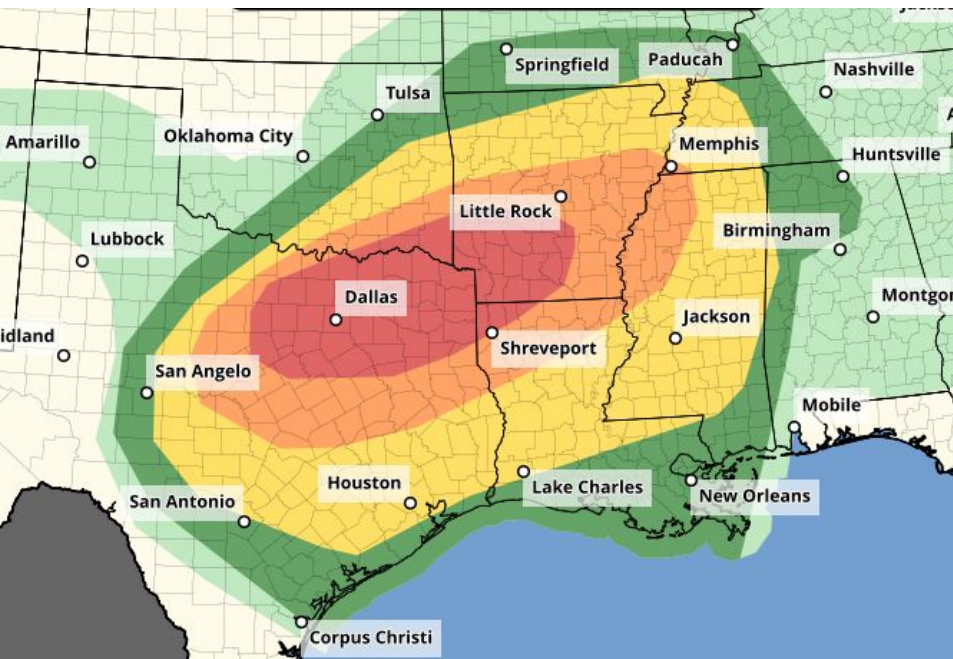


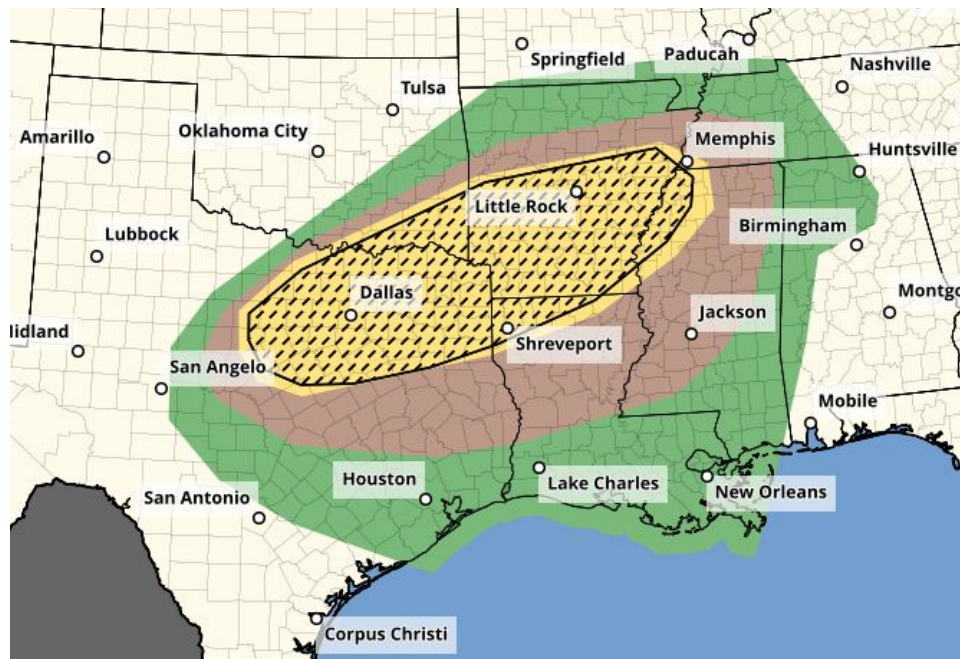
# Severe Weather Outlook - Today and Tonight



## Overall Outlook



## Tornado Outlook

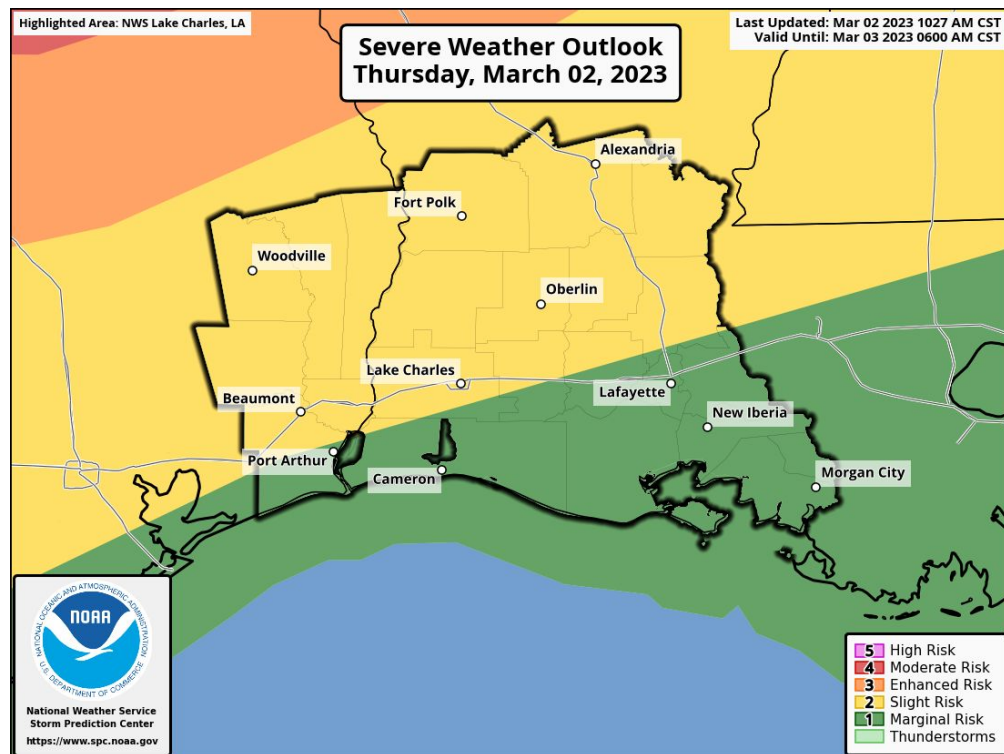




# Severe Weather Outlook: Thursday March 2nd, 2023

## Key Messages:

- **Impacts:** A **Marginal** (level 1 out of 5) to **Slight** (level 2 out of 3) to **Enhanced** (level 3 out of 5) Potential Risk for severe thunderstorms. The main hazard is damaging straight line wind gusts, however a few quick spin up tornadoes, and large hail can not be ruled out.
- **Where:** The **Enhanced** Potential Risk is north a Woodville to Alexandria line, the **Slight** Potential Risk is northwest of a Port Arthur to Lake Charles to Opelousas line with the **Marginal** Potential Risk southeast of that line.
- **When:** A line of storms Thursday evening into Thursday night. Mainly between 9 pm and 4 am.
- **Confidence:** There is High confidence in the development of a line of storms. Medium confidence in the severe storms along the line.



National Oceanic and  
Atmospheric Administration

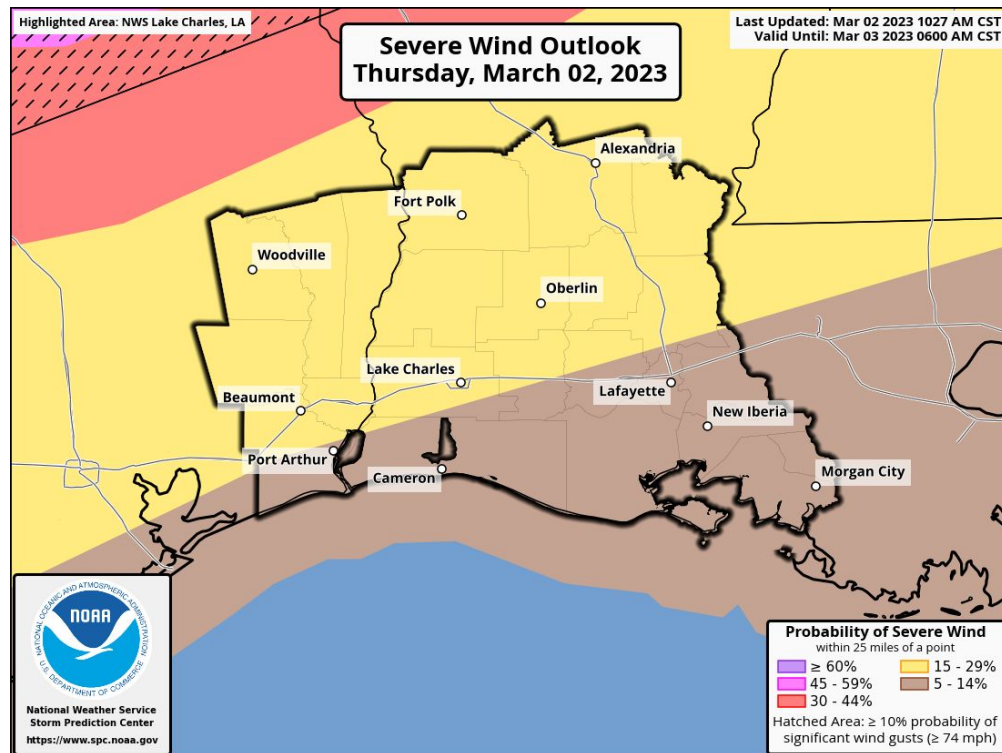
U.S. Department of Commerce

National Weather Service  
Lake Charles, LA

# Severe Wind Probabilities: Thursday Night March 2nd, 2023



- **Risk Level 3:** 30 to 44 percent chance of thunderstorm wind gusts over 58 mph north of a Woodville to Alexandria line. There is also a risk of significant damaging winds of greater than 74 mph northwest of a Woodville to Toledo Bend line.
- **Risk Level 2:** 15 to 29 percent chance of thunderstorm wind gusts over 58 mph northwest of a Port Arthur to Lake Charles to Opelousas line.
- **Risk Level 1:** 5 to 14 percent chance of thunderstorm wind gusts over 58 mph southeast of a Port Arthur to Lake Charles to Opelousas line.



National Oceanic and  
Atmospheric Administration

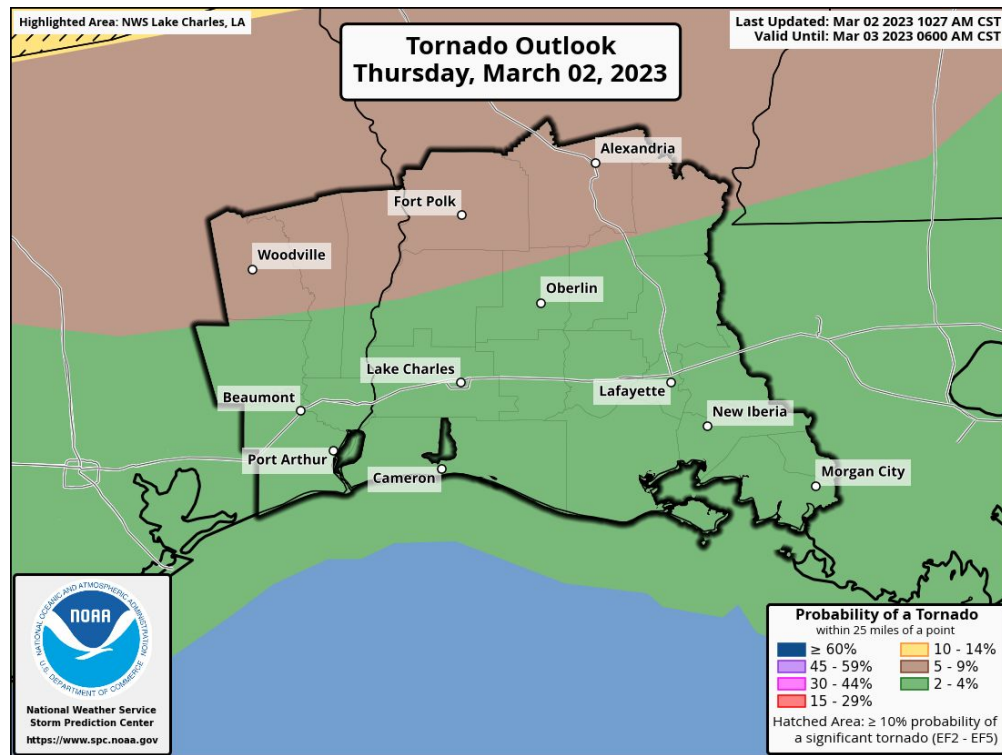
U.S. Department of Commerce

National Weather Service  
Lake Charles, LA

# Tornado Probabilities: Thursday Night March 2nd, 2023



- **Risk Level 3:** 10 to 14 percent chance of a tornado north of a Woodville to Alexandria line with a risk of significant tornadoes of EF2 strength of greater.
- **Risk Level 2:** 5 to 9 percent chance of a tornado north of a Beaumont to Opelousas line.
- **Risk Level 1:** 2 to 4 percent chance of a tornado south of a Beaumont to Opelousas line.



National Oceanic and  
Atmospheric Administration

U.S. Department of Commerce

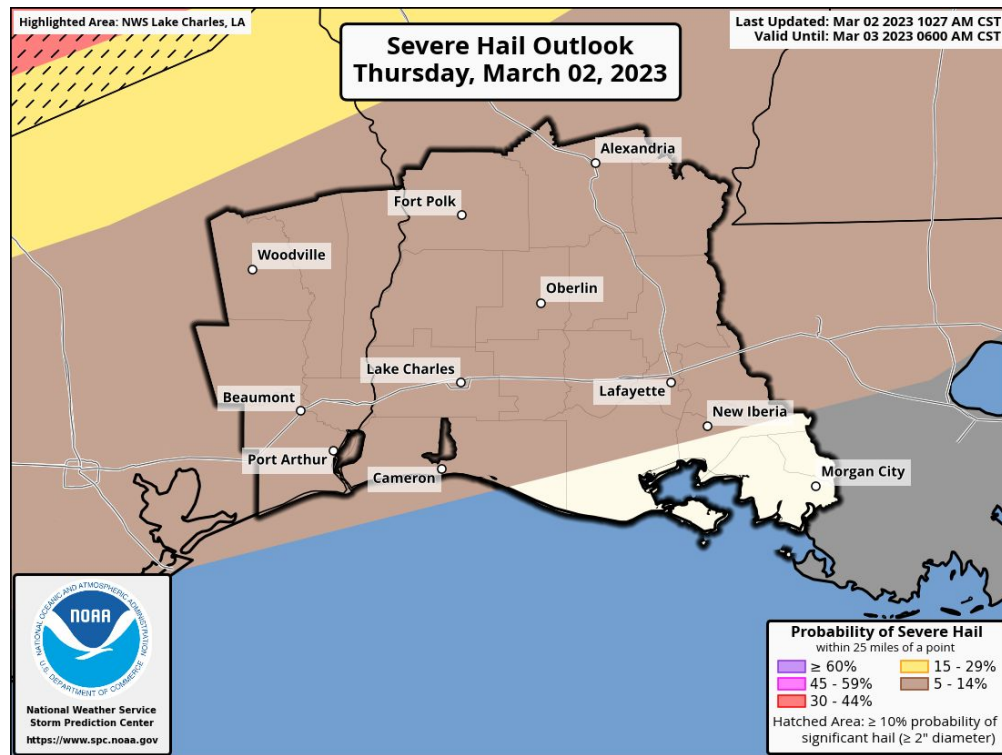
National Weather Service  
Lake Charles, LA



# Severe Hail Probabilities: Thursday Night March 2nd, 2023



→ **Risk Level 1:** 5 to 14 percent chance of Hail 1 inch in diameter or larger.



National Oceanic and  
Atmospheric Administration

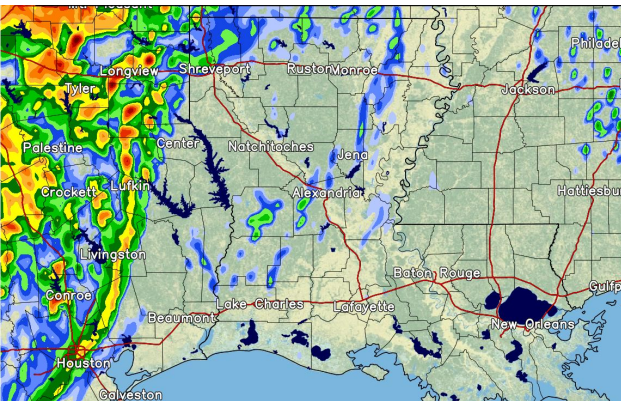
U.S. Department of Commerce

National Weather Service  
Lake Charles, LA

# Timing: What Radar Could Look Like Tonight - Friday Morning



## 11pm Tonight



## 12am Friday



## 1am Friday

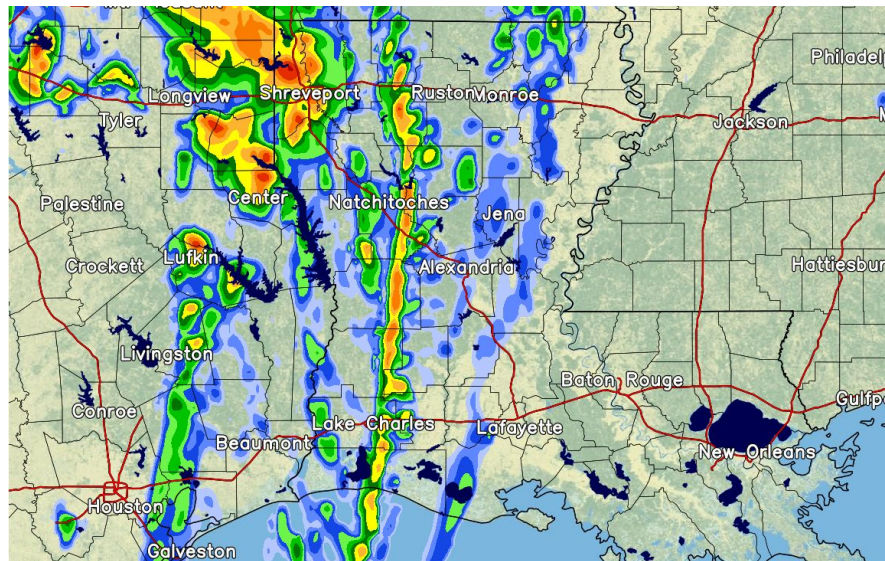




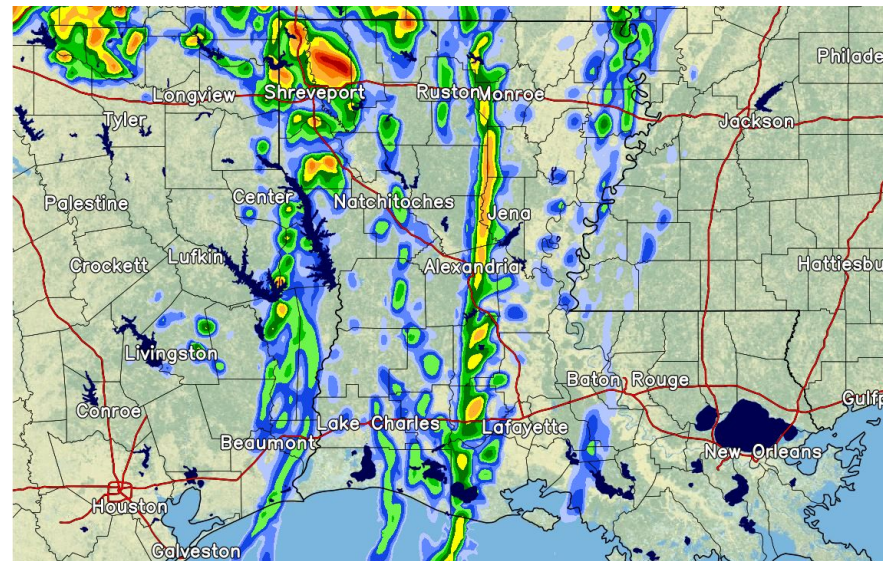
# Timing: What Radar Could Look Like Tonight - Friday Morning



## 2am Friday



## 3am Friday



# Forecast Wind and Wind Gusts This Evening



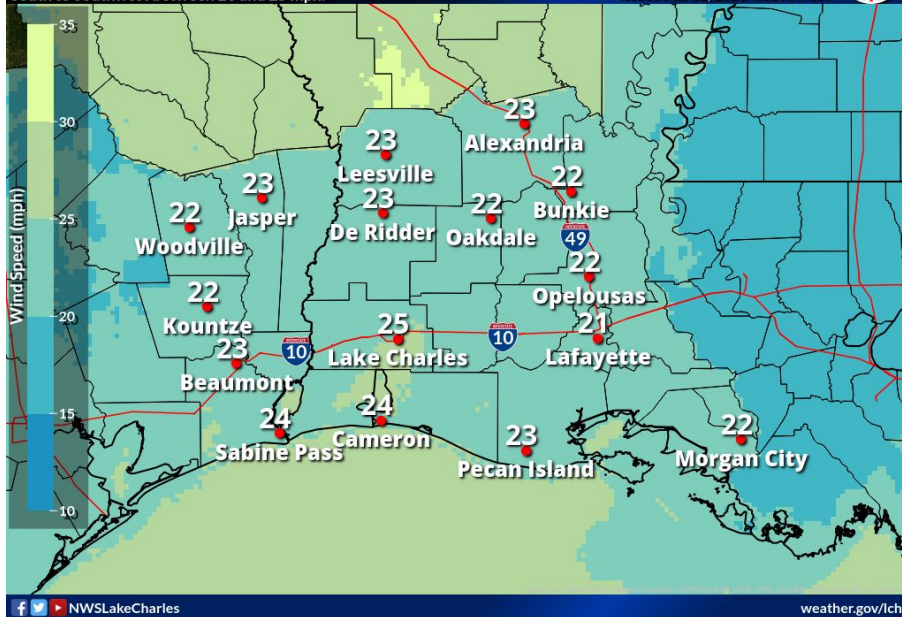
Thursday evening: South winds 20 to 25 mph with gusts 30 to 40 mph.

## Sustained Winds 9 pm

South to Southwest between 20 and 25 mph.

Weather Forecast Office  
Lake Charles, LA

Issued Mar 02, 2023 4:56 AM CST

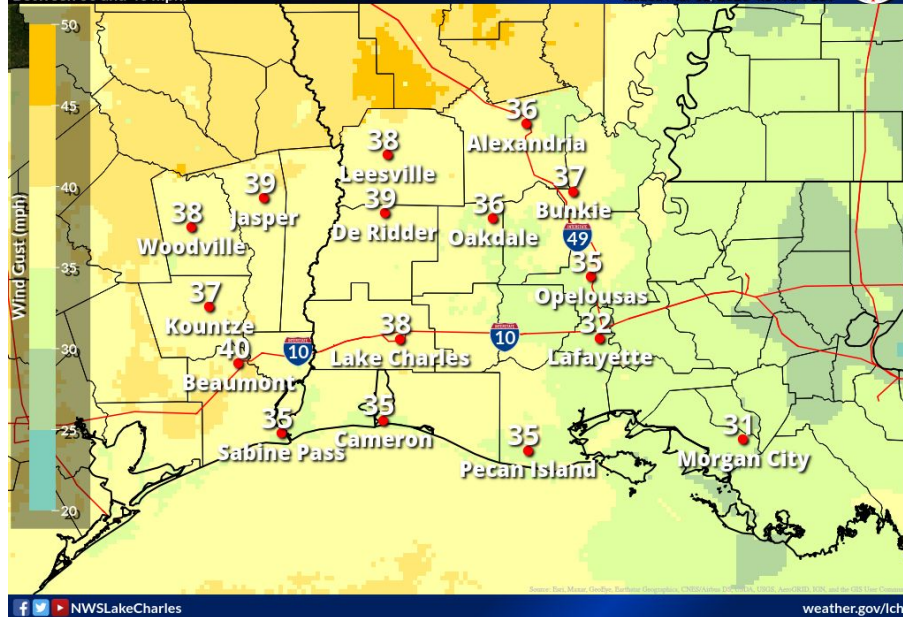


## Wind Gusts 9 pm

Between 30 and 40 mph.

Weather Forecast Office  
Lake Charles, LA

Issued Mar 02, 2023 4:54 AM CST



National Oceanic and  
Atmospheric Administration

U.S. Department of Commerce

National Weather Service  
Lake Charles, LA





**Wind Advisories will be in effect from 3 pm this afternoon to 12pm Friday afternoon.**

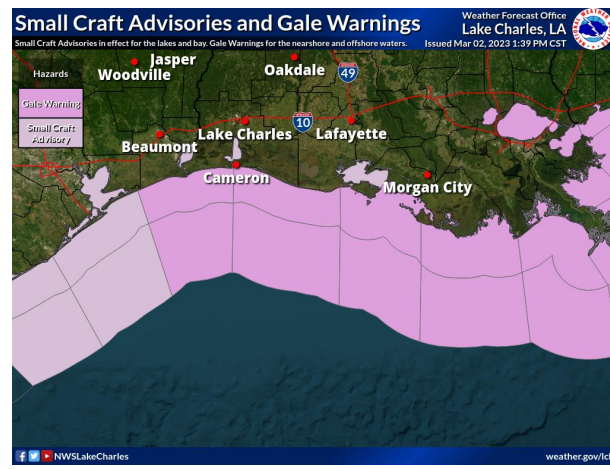
**Winds ahead of the front will be southerly to southwesterly at 20 to 25 sustained with gusts to 40 mph.**

**Behind the front, winds will be westerly near the same values before tapering down and shifting out of the northwest.**

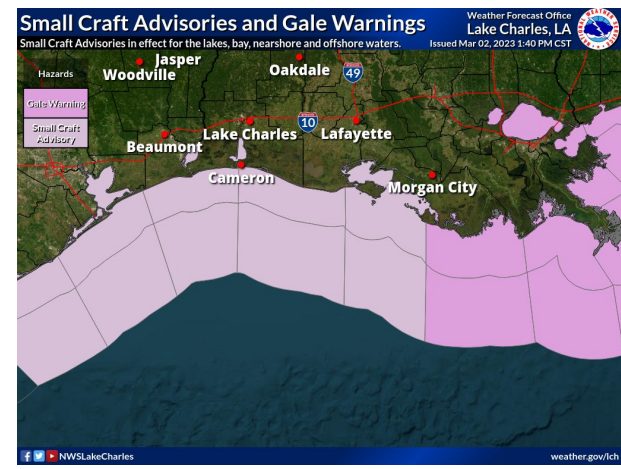
## 3pm today to 6pm tonight



## 6pm tonight to 6am tomorrow



## 6am to 12pm tomorrow



**Small Craft Advisories for the lakes, bay, near and offshore waters.**

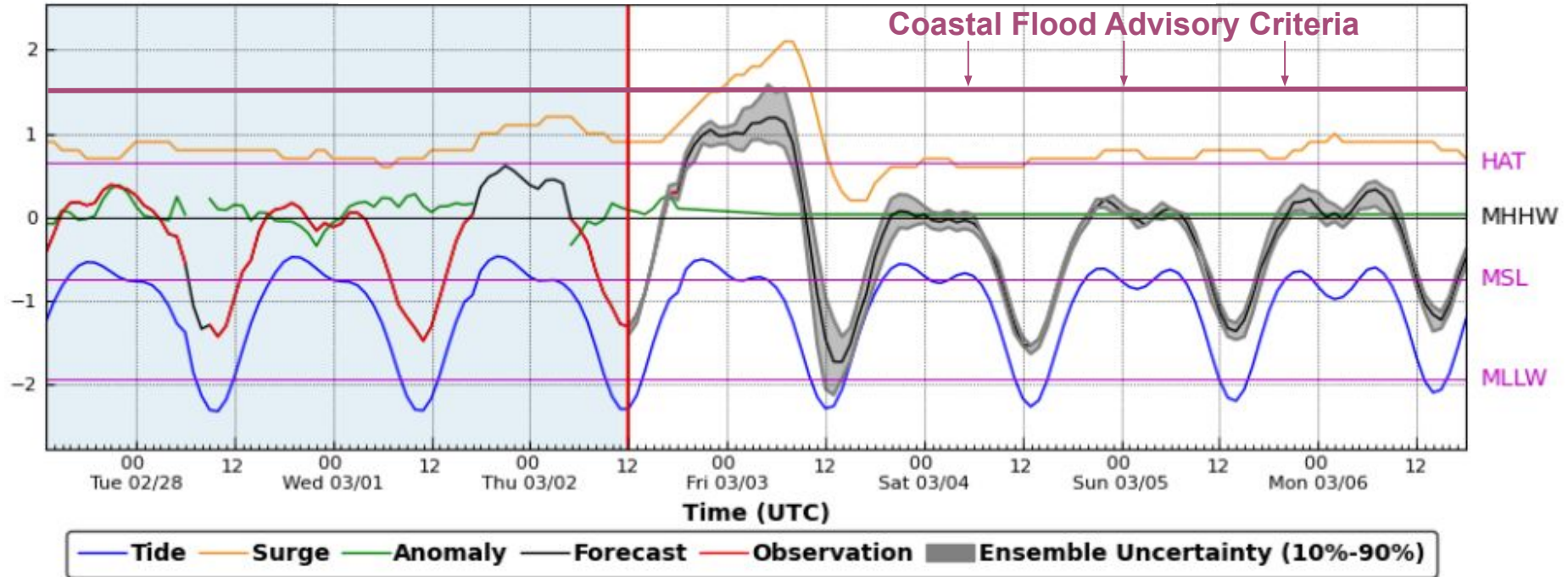
**Small Craft Advisories for the lakes and bay. Gale Warnings for the near and offshore waters.**

**Small Craft Advisories for the lakes, bay, near and offshore waters.**

# Marine Weather - 10% Chance for Advisory Level Coastal Flooding



## Calcasieu Pass, LA

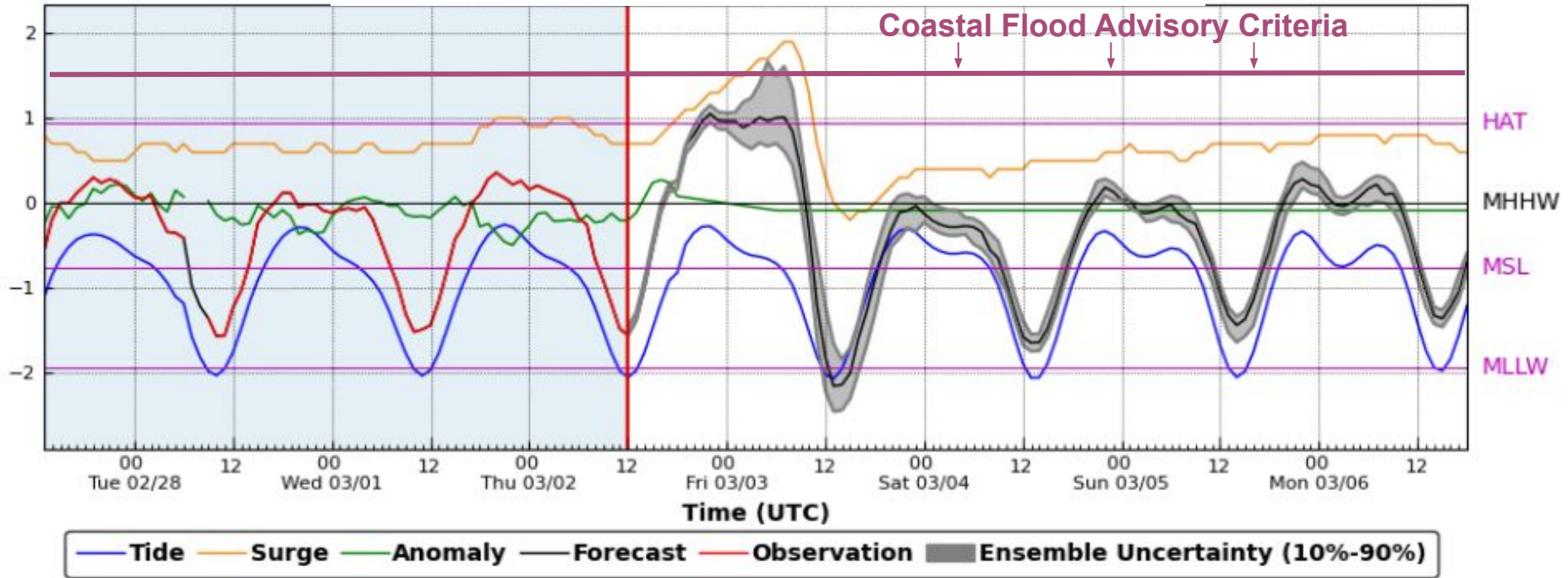




# Marine Weather - 10% Chance for Advisory Level Coastal Flooding



## Sabine Pass, TX





# Manufactured/Mobile Home Tornado Safety



## TORNADO SAFETY



FOR MOBILE HOMES



### Tornadoes Can Be Deadly

**72%** of all tornado fatalities occur in homes (permanent, mobile, manufactured, etc.)

**54%** of the housing fatalities occur in a mobile/manufactured home, even though mobile and manufactured home only make up **6%** of the US housing stock.

- If you are in a mobile home, it is **NOT** safe from a tornado, and you **MUST** seek an alternative shelter before storms hit.
- Make plans ahead of time to stay with friends or family who live in a sturdy building.
- Your last resort is to lie low and flat on your stomach with your hands over your head in a ditch or ravine.



**Remain Weather Aware Thursday PM.**

**Have Multiple Methods of Receiving  
Watches and Warnings.**

**Wireless Emergency Alerts  
Can Save Your Life**



[weather.gov/tornado](http://weather.gov/tornado)

**Test Your  
NOAA Weather Radio**

*It could save your life*



[weather.gov/tornado](http://weather.gov/tornado)



**National Oceanic and  
Atmospheric Administration**

U.S. Department of Commerce

**National Weather Service  
Lake Charles, LA**





- NWS Lake Charles Phone Number: **(337) 477-5285 ext. 1**
- NWS Lake Charles Webpage: [www.weather.gov/LCH](http://www.weather.gov/LCH)
- Online Severe Weather Reporting: [stormReport](http://stormReport)
- NWS Lake Charles Facebook [www.facebook.com/NWSLakeCharles](http://www.facebook.com/NWSLakeCharles)
- NWS Lake Charles Twitter [twitter.com/NWSLakeCharles](http://twitter.com/NWSLakeCharles)

**Next Update:** Later Today.

