



# Weekly Weather Update

2:30 PM CDT

Thursday, March 25, 2021

*Montra Lockwood, NWS Lake Charles*



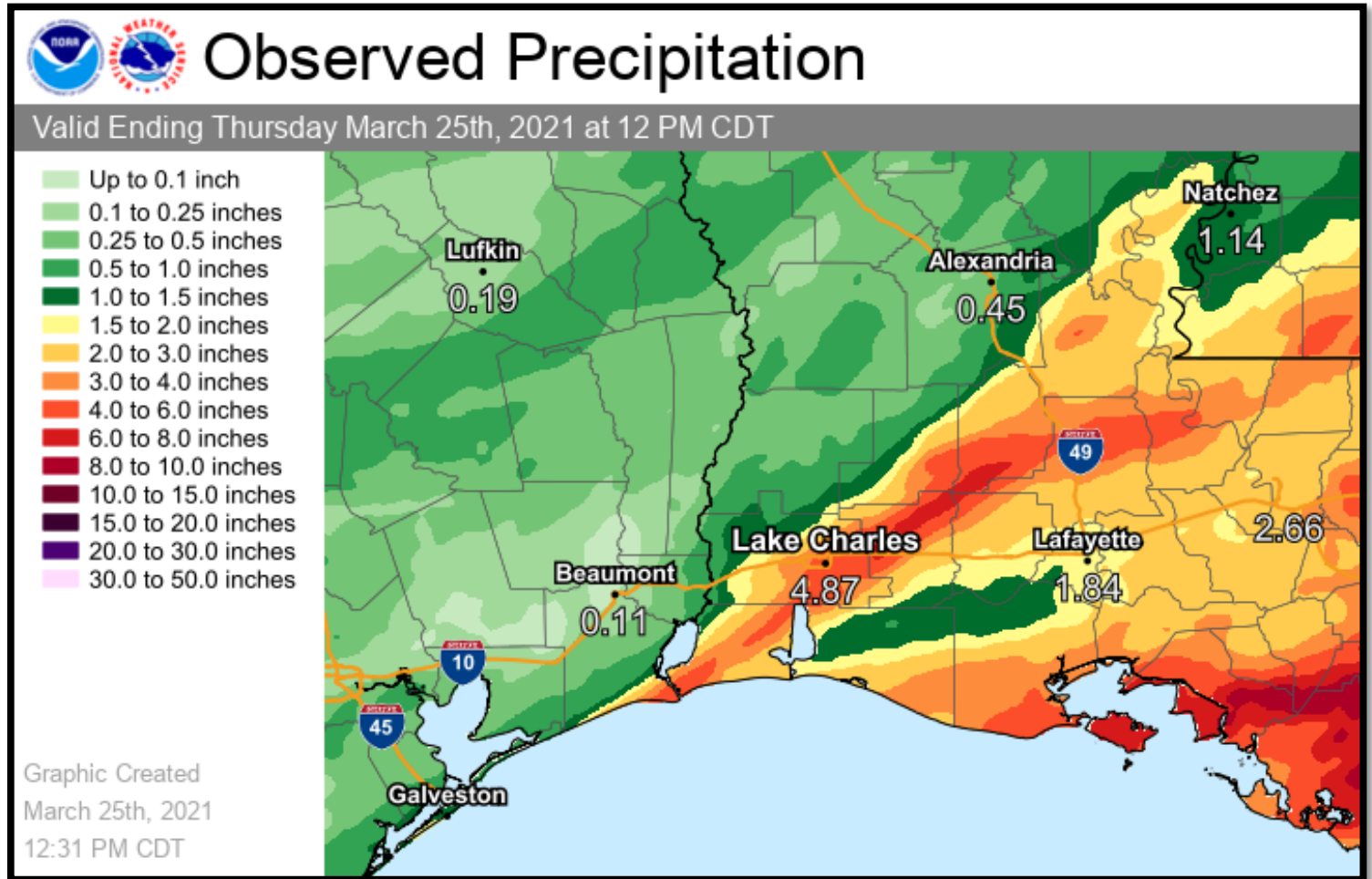


## TOP STORY:

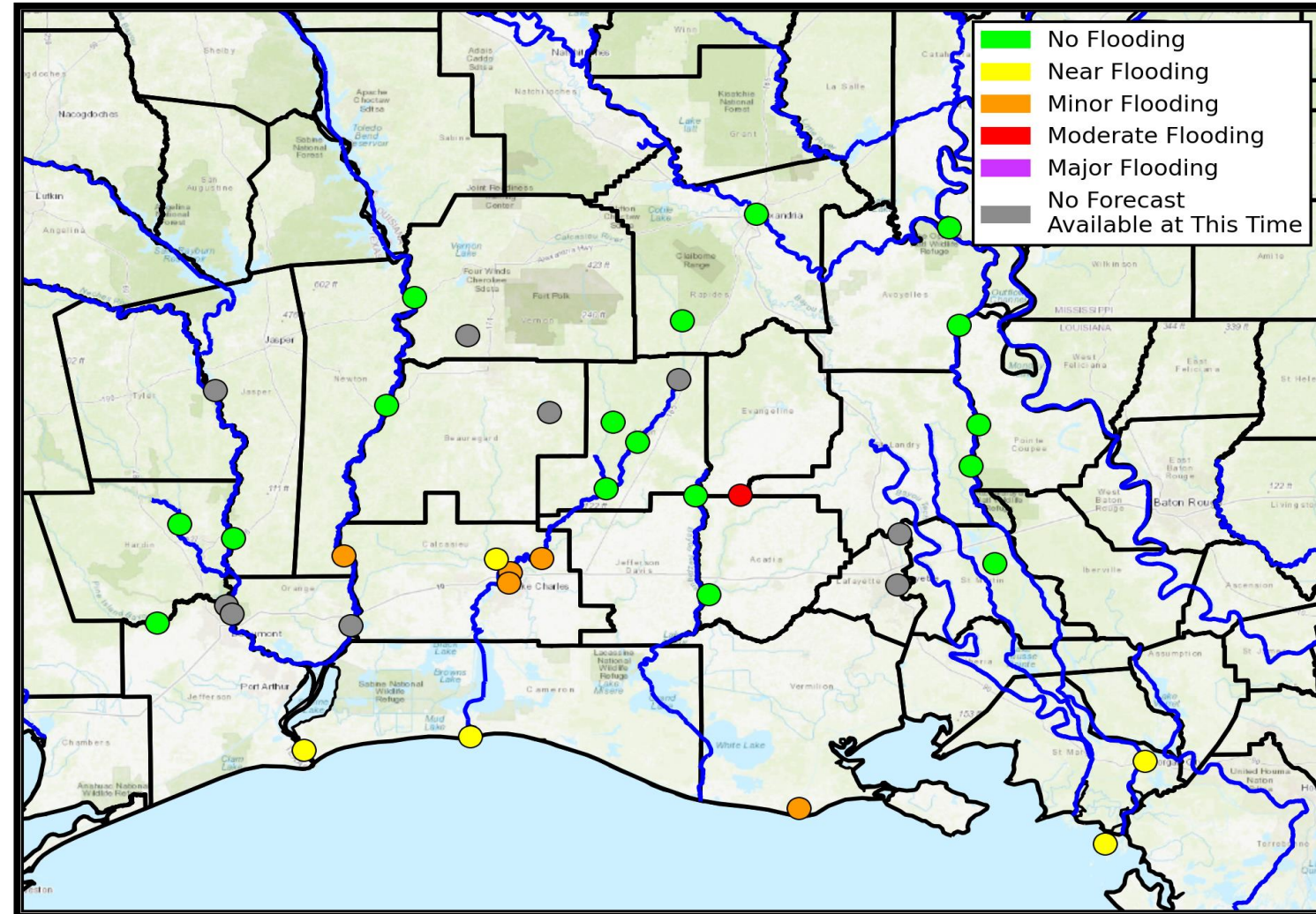
**A brief respite from the rainy pattern is expected Friday into Saturday, with showers returning early in the week and again by midweek.**

	Low Temperatures	High Temperatures	Chance For Rain
Friday	50-56 F	79-81 F	10%
Saturday	65-69 F	80-83 F	10-35%
Sunday	64-68 F	73-78 F	40-60%
Monday	53-59 F	70-75 F	20-30%
Tuesday	55-60 F	75-80 F	10-15%
Wednesday	64-67 F	78-82 F	30-50%
Thursday	51-58 F	67-71 F	20-30%
Normals This Time of Year	50-55 F	73-75 F	25%-35%

A couple of rain event brought heavy rainfall to portions of southwest Louisiana, while much of western Louisiana and southeast Texas had less than an inch of rain.



Multiple rivers are in flood, with moderate flooding on Bayou Des Cannes near Eunice, and minor flooding on the lower Calcasieu and Sabine Rivers.



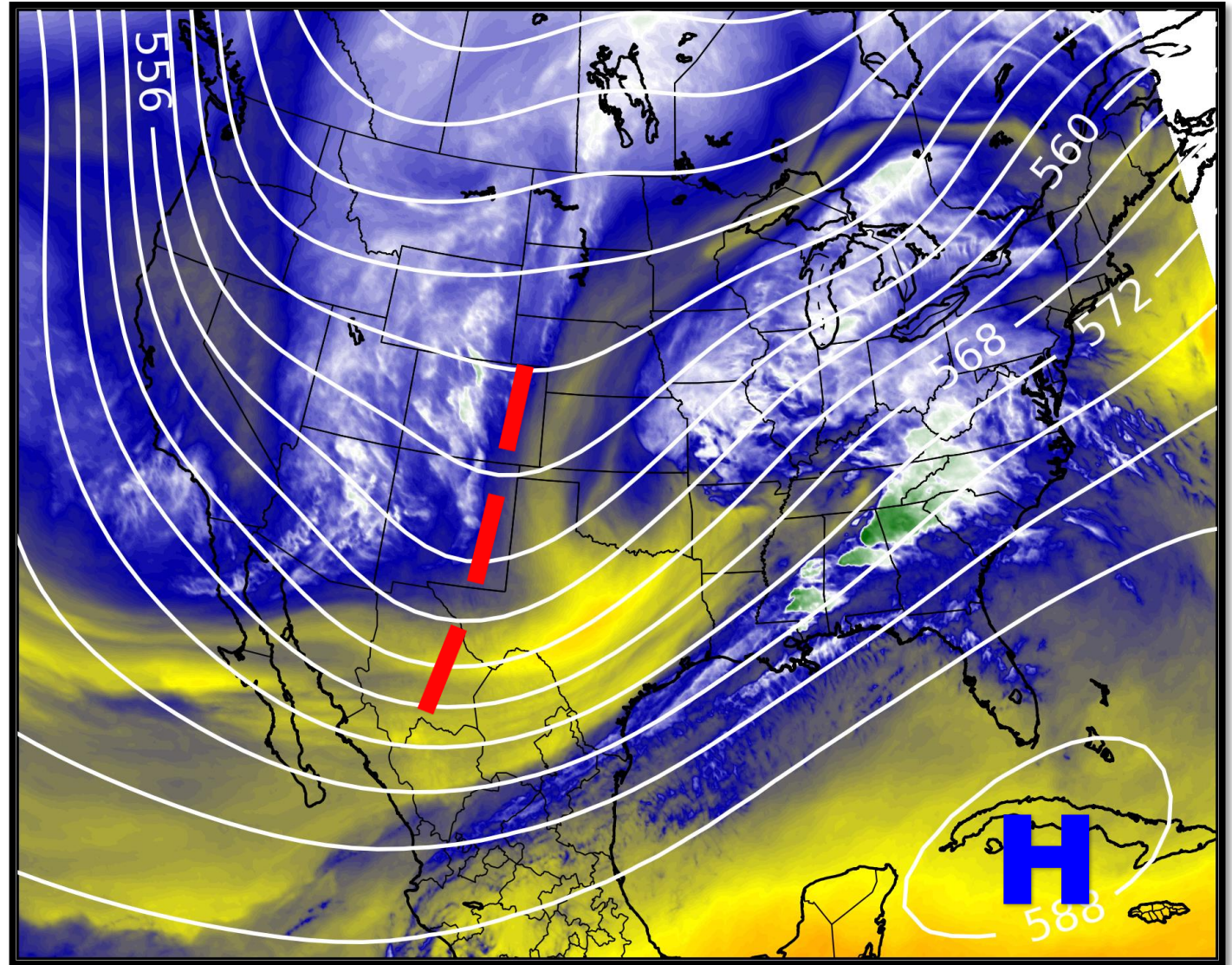


# Upper Level Steering Patterns



Lake Charles  
WEATHER FORECAST OFFICE

An upper level trough is located over the Rockies and high plains, while high pressure is seen over Cuba. This is producing southwesterly flow aloft over the region.



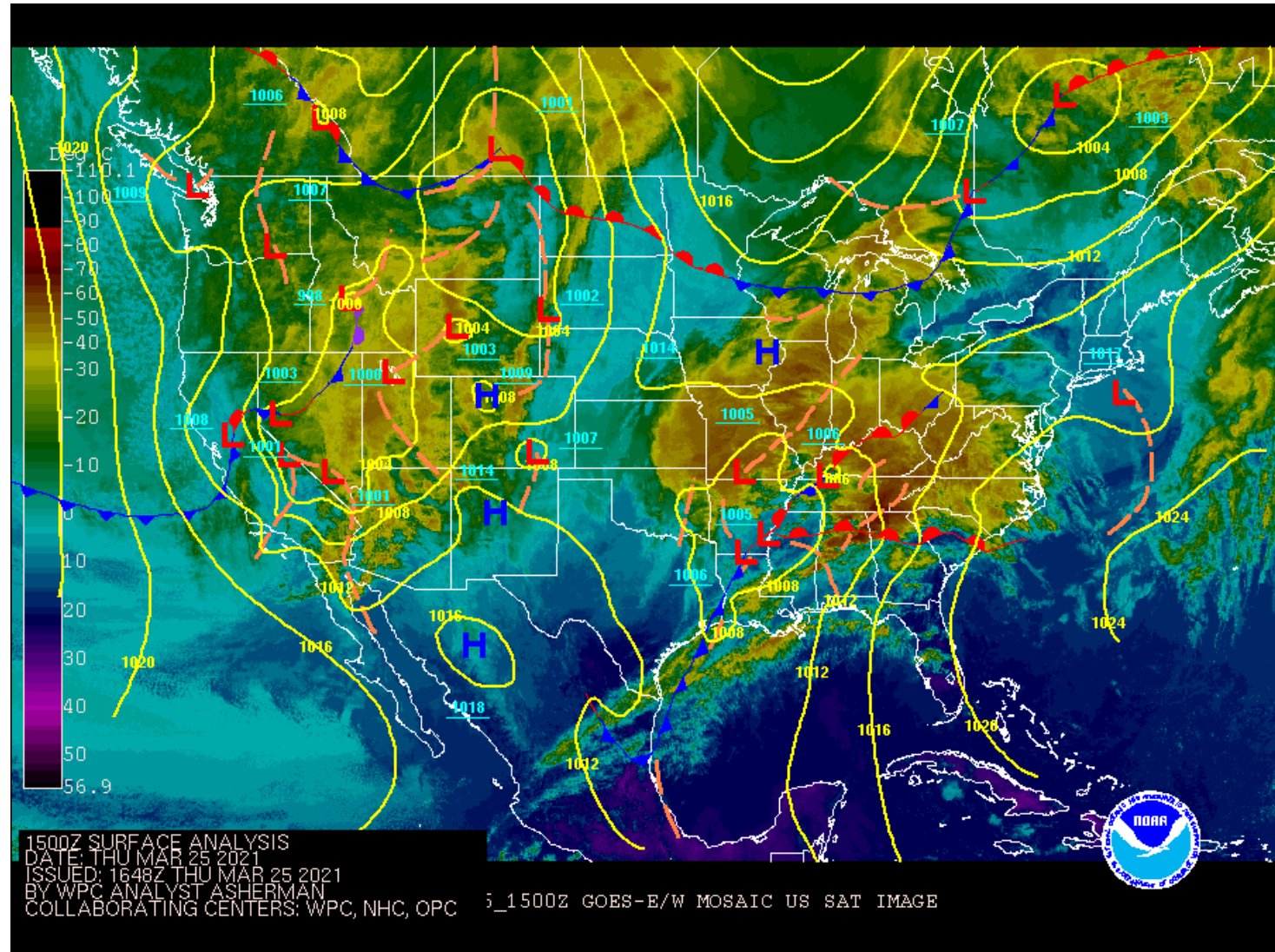


# Surface Weather Map with Fronts



Lake Charles  
WEATHER FORECAST OFFICE

A cold front is located from northern Louisiana to the western Gulf of Mexico, progressing east across the area today.

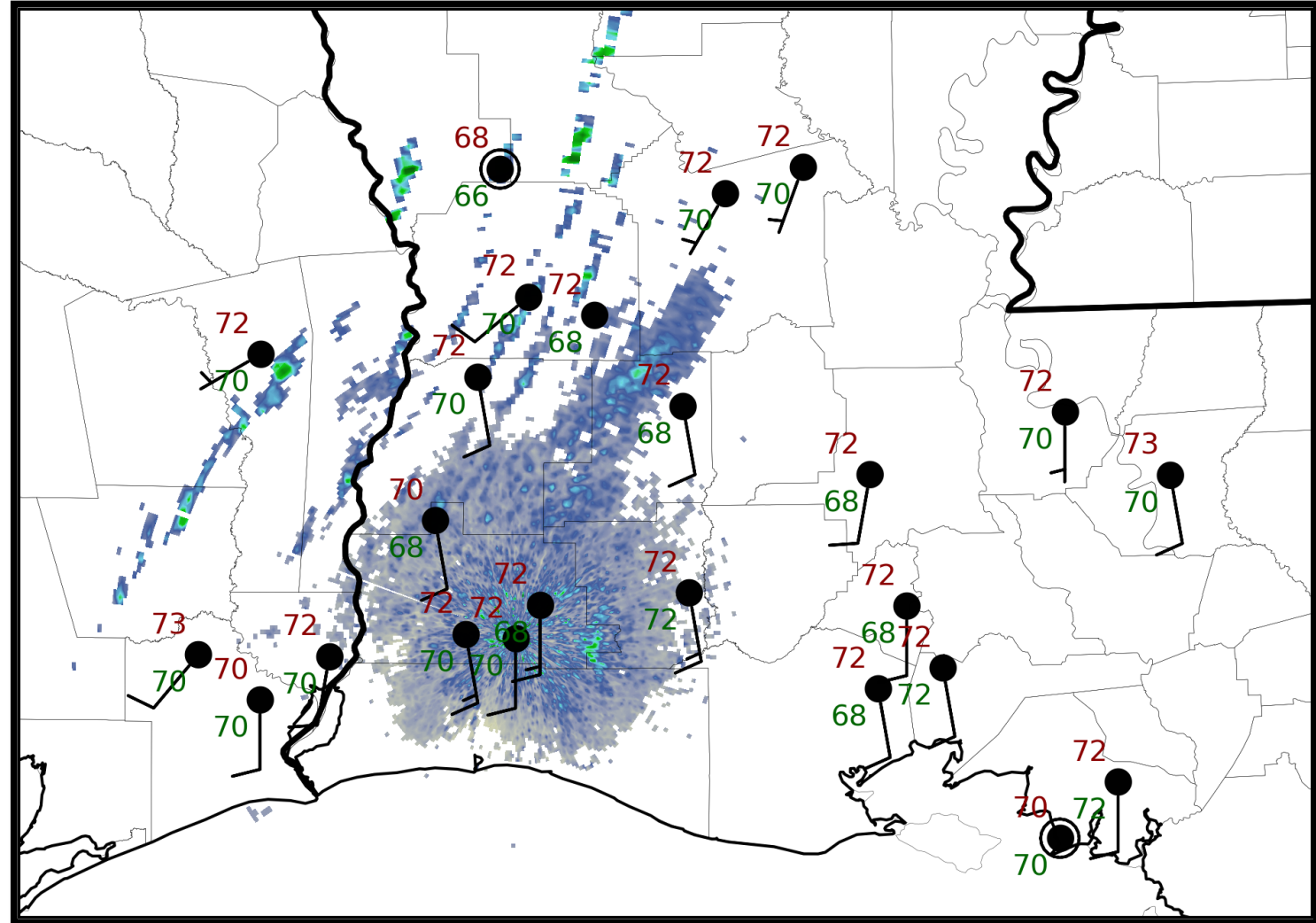


# 6 am Weather Observations



Lake Charles  
WEATHER FORECAST OFFICE

A few showers were streaming across the area this morning ahead of the cold front. Temperatures were warm with readings in the lower 70s. Winds were south 10 to 15 MPH across Louisiana, with southwest winds around 10 MPH across southeast Texas.

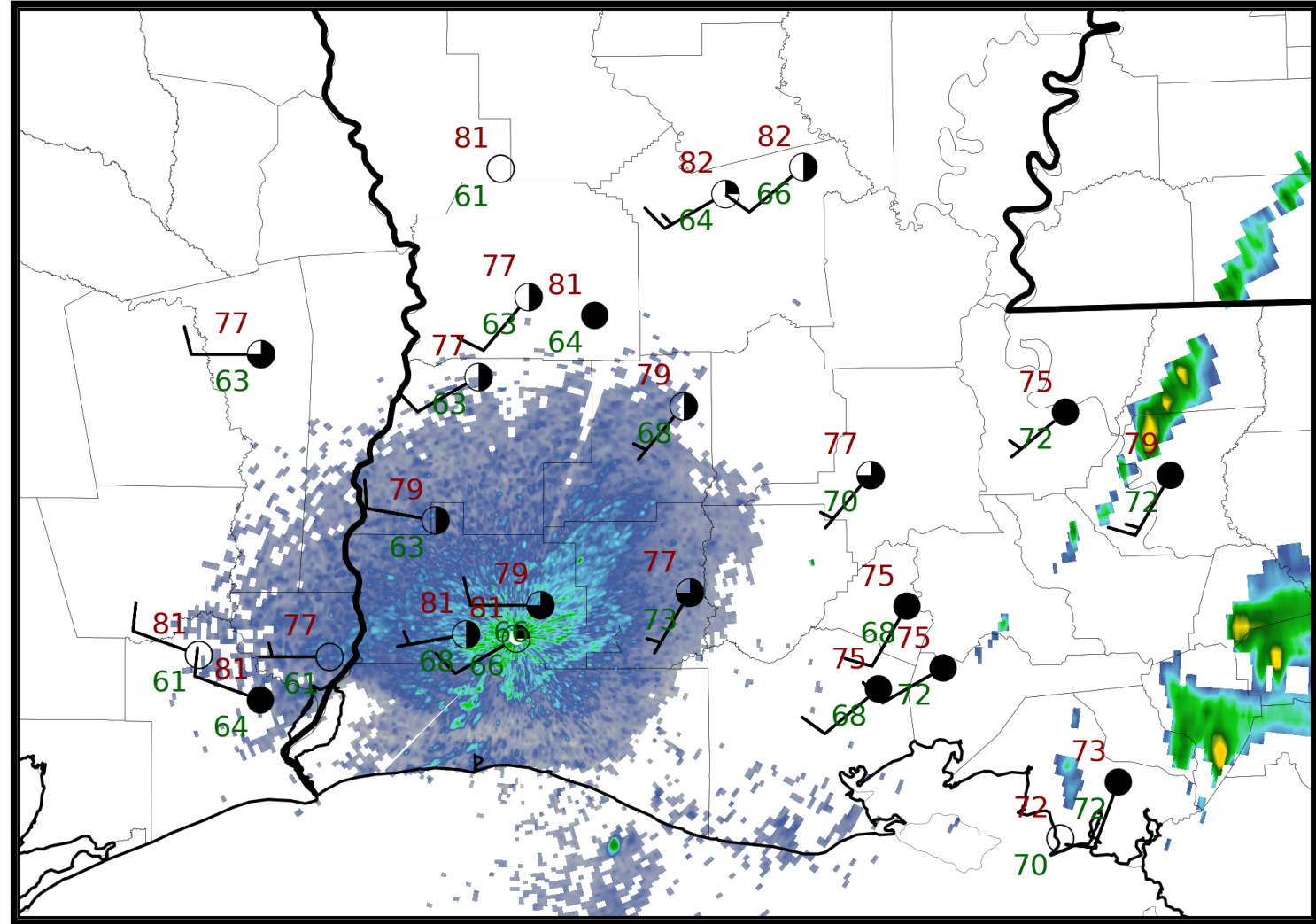


# 2 pm Weather Observations



Lake Charles  
WEATHER FORECAST OFFICE

A few showers and storms are developing across south central Louisiana. The cold front is currently crossing the area, located roughly from Marksville Louisiana to Grand Chenier Louisiana.

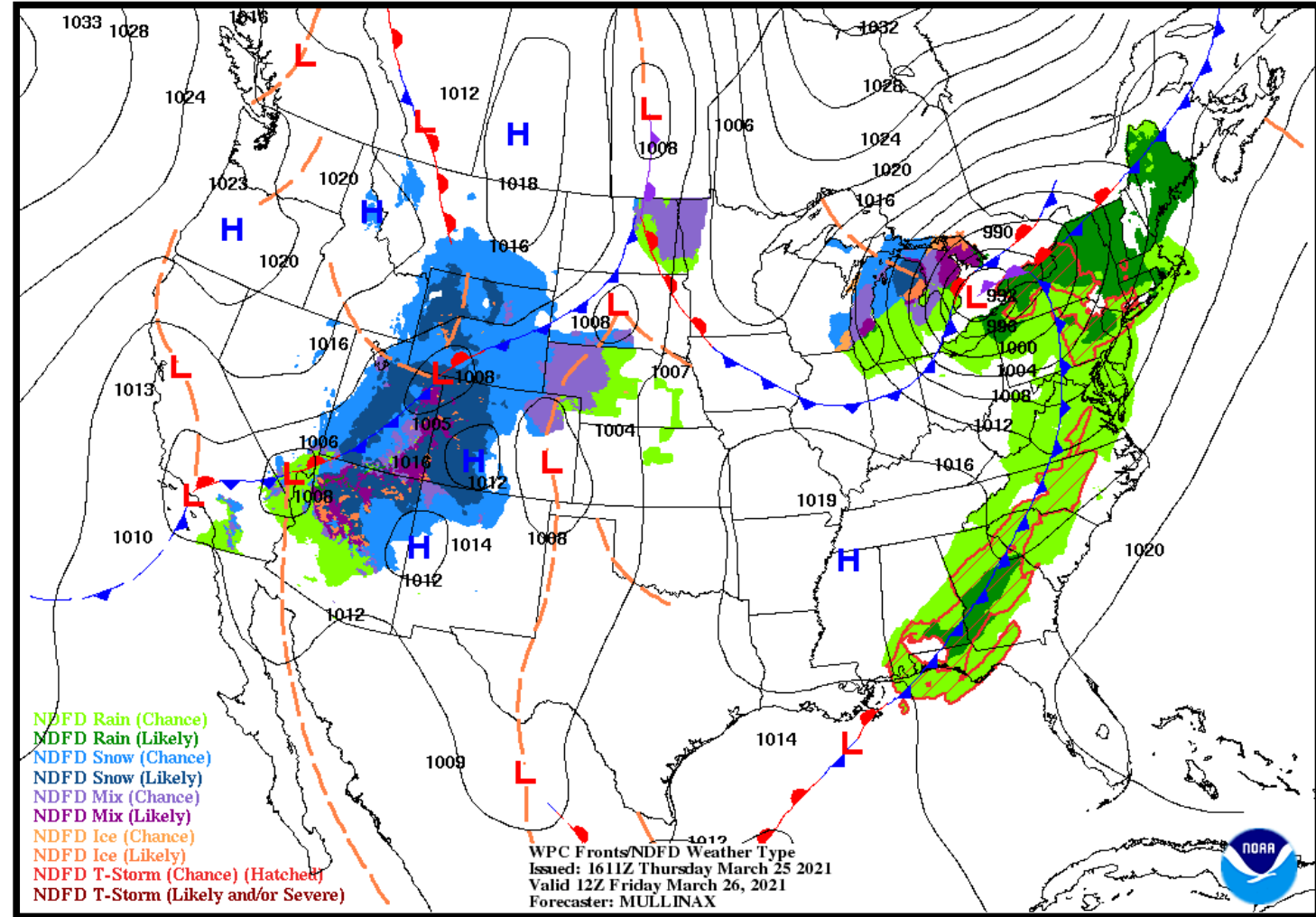






### NWS LCH REGIONAL WEATHER

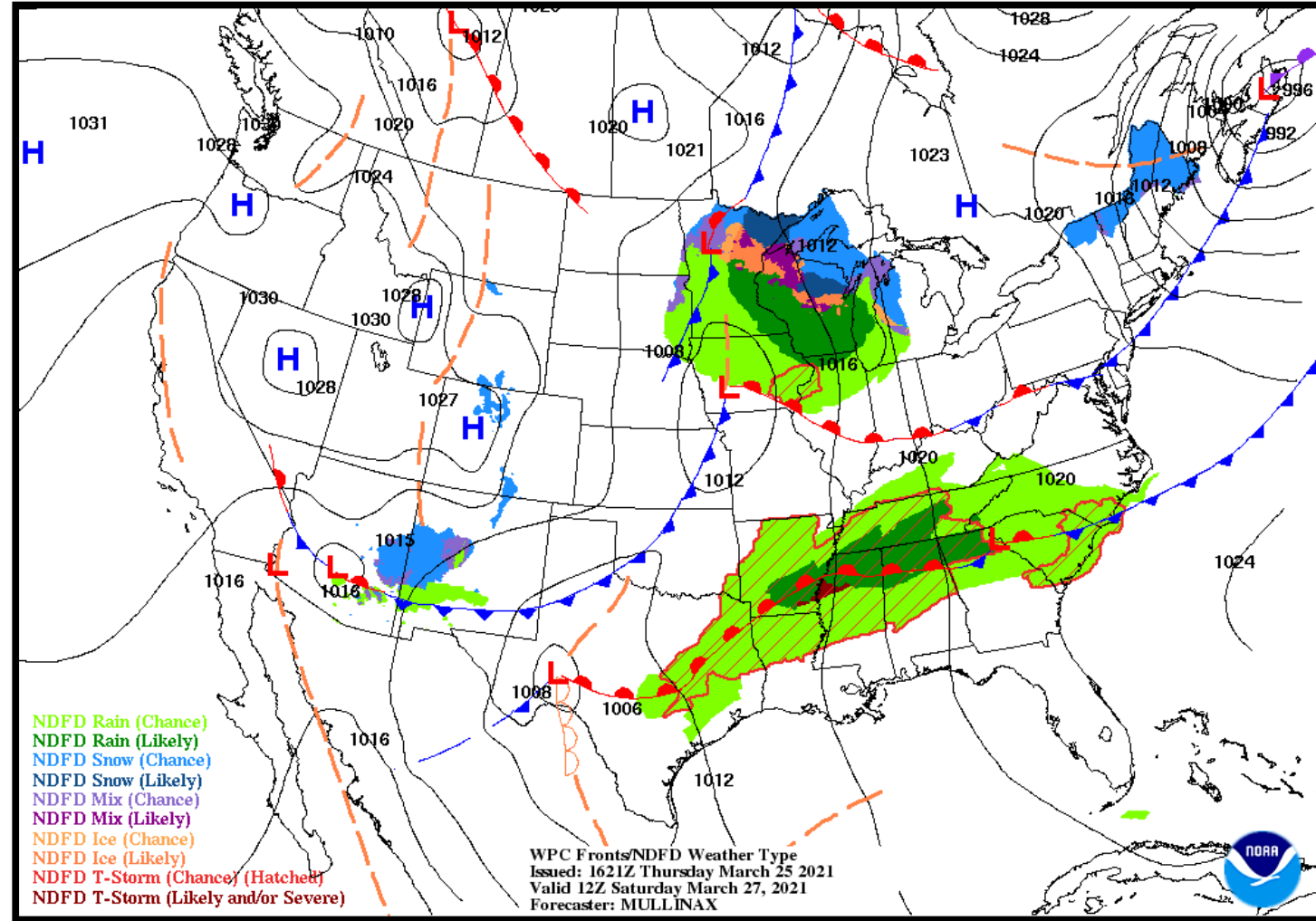
Low Temperature	50-56 F
High Temperature	79-81 F
Wind	E-SE 5-10 mph
Rain Chances	10%
Weather Hazards	None





### NWS LCH REGIONAL WEATHER

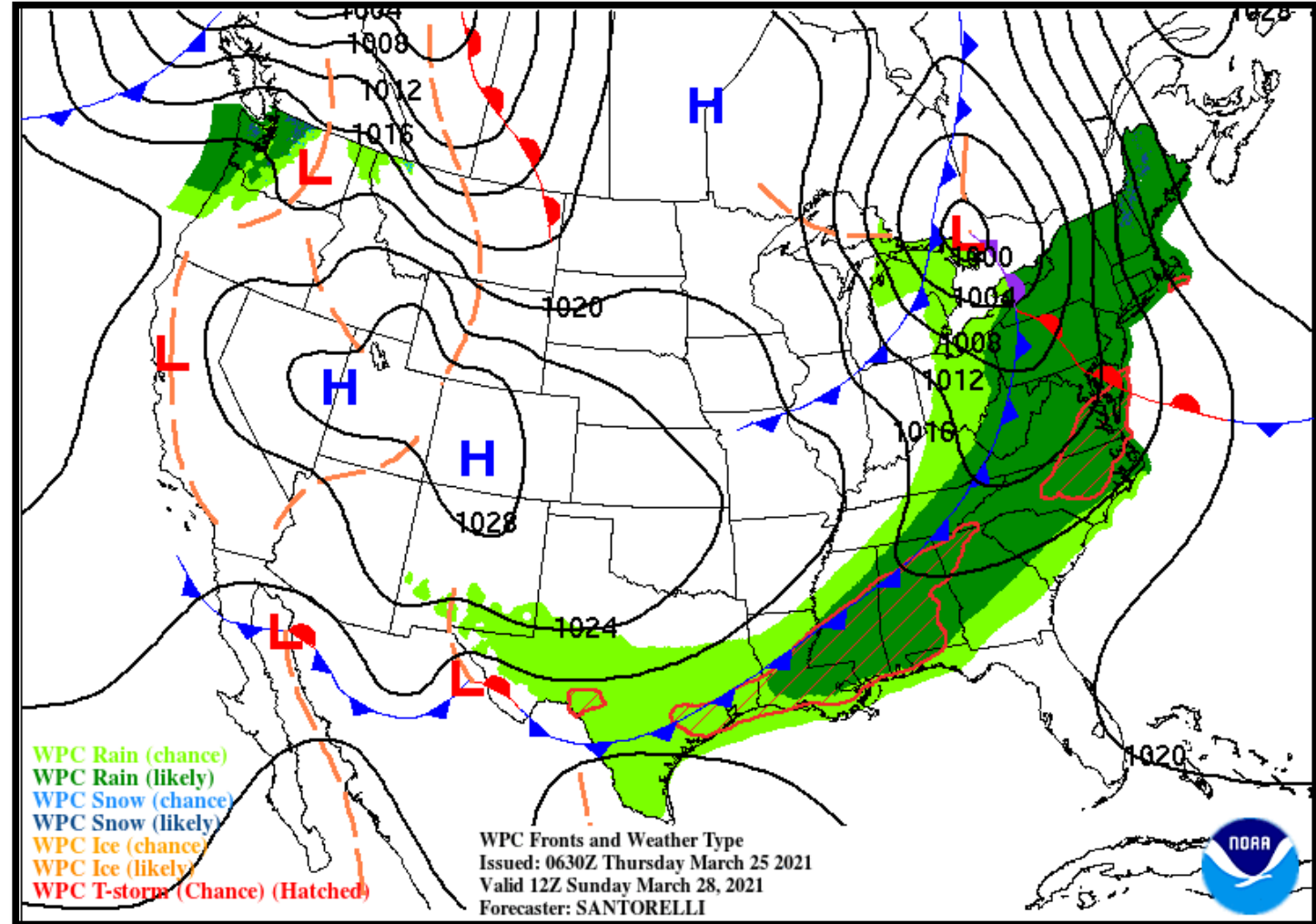
Low Temperature	65-69 F
High Temperature	80-83 F
Wind	S 10-15 mph
Rain Chances	10-35%
Weather Hazards	Thunderstorms





### NWS LCH REGIONAL WEATHER

Low Temperature	64-68 F
High Temperature	73-78 F
Wind	NNE 5-12 mph
Rain Chances	40-60%
Weather Hazards	Thunderstorms

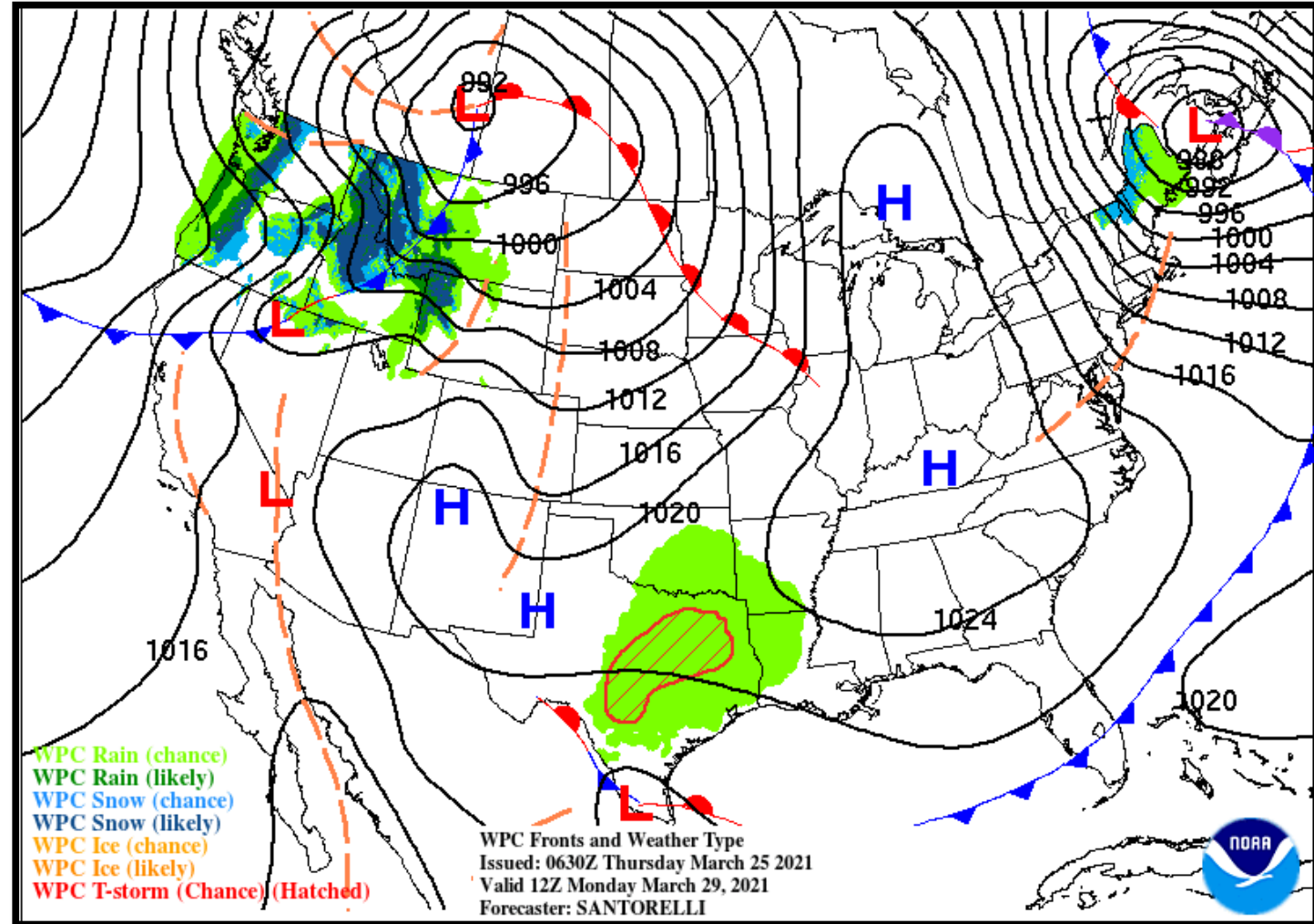






### NWS LCH REGIONAL WEATHER

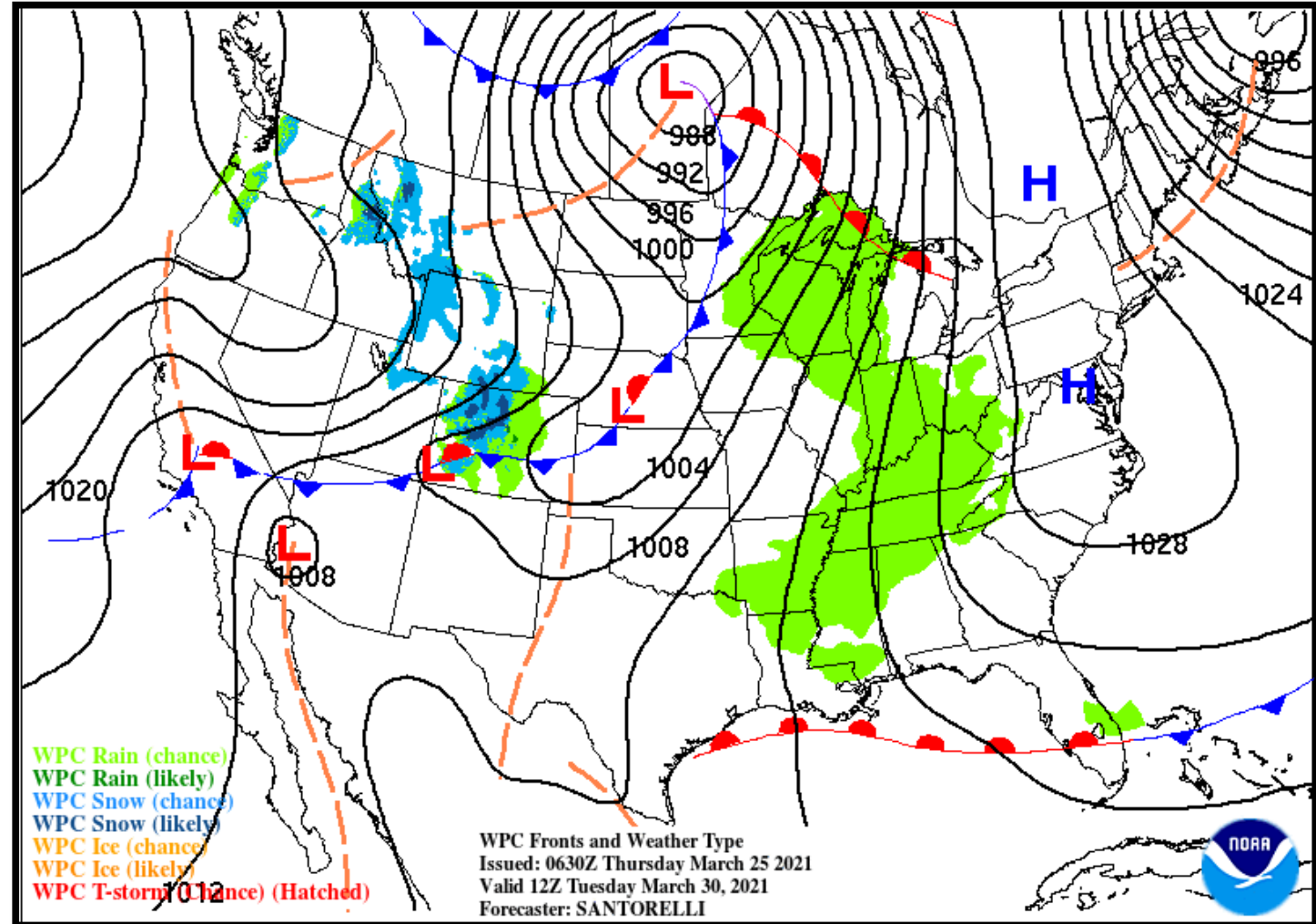
Low Temperature	53-59 F
High Temperature	70-75 F
Wind	E 5-10 mph
Rain Chances	20-30%
Weather Hazards	Thunderstorms





### NWS LCH REGIONAL WEATHER

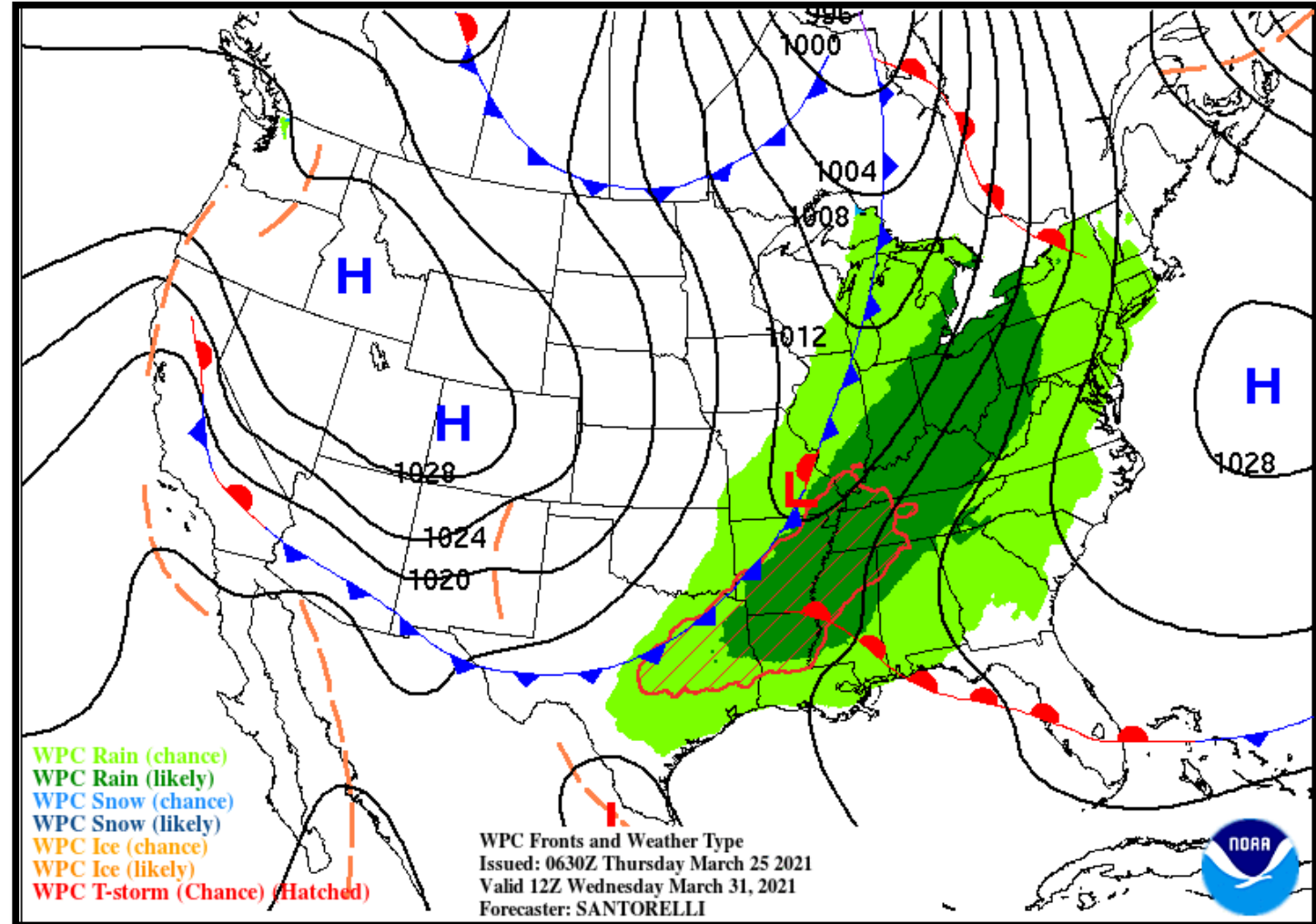
Low Temperature	55-60 F
High Temperature	75-80 F
Wind	SSE 10-15 mph
Rain Chances	10-15%
Weather Hazards	None





### NWS LCH REGIONAL WEATHER

Low Temperature	64-67 F
High Temperature	78-82 F
Wind	S-SW 5-12 mph
Rain Chances	30-50%
Weather Hazards	Thunderstorms

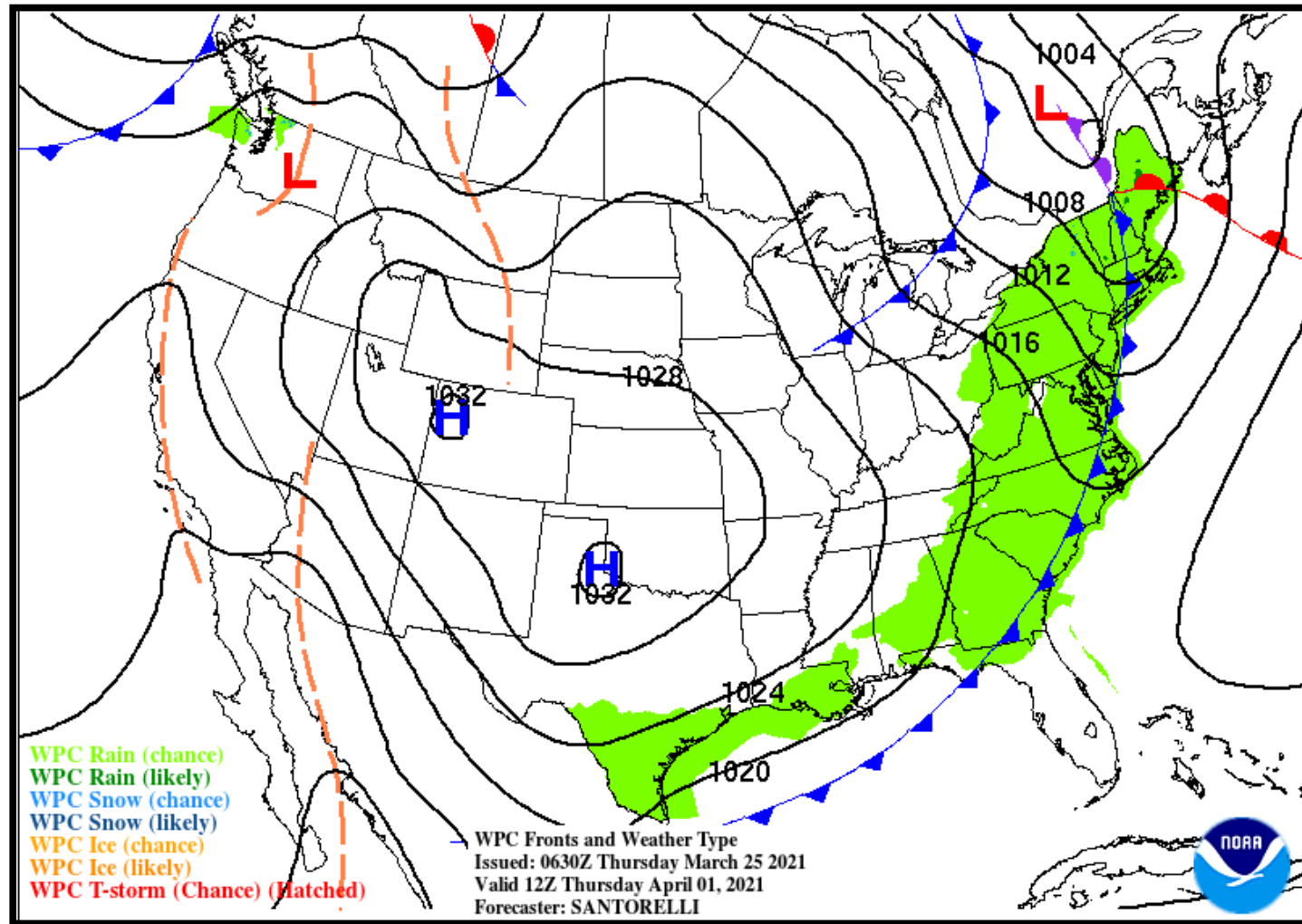






### NWS LCH REGIONAL WEATHER

Low Temperature	51-58 F
High Temperature	67-71 F
Wind	NNE 10-15 mph
Rain Chances	20-30%
Weather Hazards	None



# Weekly Weather Summary Table



Lake Charles  
WEATHER FORECAST OFFICE

Color Codes Except for Temperatures	Weather	Friday 03/26/21	Saturday 03/27/21	Sunday 03/28/21	Monday 03/29/21	Tuesday 03/30/21	Wednesday 03/31/21	Thursday 04/01/21
Yellow = Low Threat	Rain Total	<0.10"	<b>0.10-0.25"</b>	<b>0.10-0.25"</b>	<0.10"	None	<b>0.25-0.50"</b>	<0.10"
Orange = Moderate Threat	T-Storm/ Lightning	None	<b>Isolated</b>	<b>Isolated</b>	<b>Isolated</b>	None	<b>Scattered</b>	None
Red = High Threat	Tornado/Hail/ Dmg Wind	None	None	None	None	None	None	None
	Wind	E-SE 5-10 mph	S 10-15 mph	NNE 5-12 mph	E 5-10 mph	SSE 10-15 mph	S-SW 5-12 mph	NNE 10-15 mph
	Tides	<b>Above Normal</b>	<b>Above Normal</b>	<b>Above Normal</b>	<b>Above Normal</b>	<b>Above Normal</b>	<b>Above Normal</b>	<b>Above Normal</b>
	Wave Height	<b>Near: 1-3 ft Off: 4-6 ft</b>	<b>Near: 1-4 ft Off: 5-6 ft</b>	<b>Near: 1-4 ft Off: 5-6 ft</b>	<b>Near: 1-4 ft Off: 5-7 ft</b>	<b>Near: 1-4 ft Off: 5-6 ft</b>	<b>Near: 1-4 ft Off: 5-6 ft</b>	<b>Near: 1-5 ft Off: 6-8 ft</b>
	Temperature	Low: 50-56 F	<b>Low: 65-69 F</b>	<b>Low: 64-68 F</b>	Low: 53-59 F	<b>Low: 55-60 F</b>	<b>Low: 64-67 F</b>	Low: 51-58 F
	Normal Low: 50-55 F Normal High: 73-75 F	<b>High: 79-81 F</b>	<b>High: 80-83 F</b>	High: 73-78 F	High: 70-75 F	<b>High: 75-80 F</b>	<b>High: 78-82 F</b>	<b>High: 67-71 F</b>

Color Codes For Temperatures
Yellow=5 F above normal
Orange=10 F above normal
Red=15 F above normal
Vry Lt Blue=5 F below normal
Lt Blue=10 F below normal
Blue=15 F below normal



- Mostly unsettled weather pattern expected through the upcoming week.
- Some uncertainty regarding shower and thunderstorm chances early next week, and also regarding potential for severe weather.
- Temperatures to remain near or above normal through the middle of next week.



