



# Weekly Weather Update

2:30 PM CDT  
Thursday, June 9, 2022

Stephen Carboni, *NWS Lake Charles*



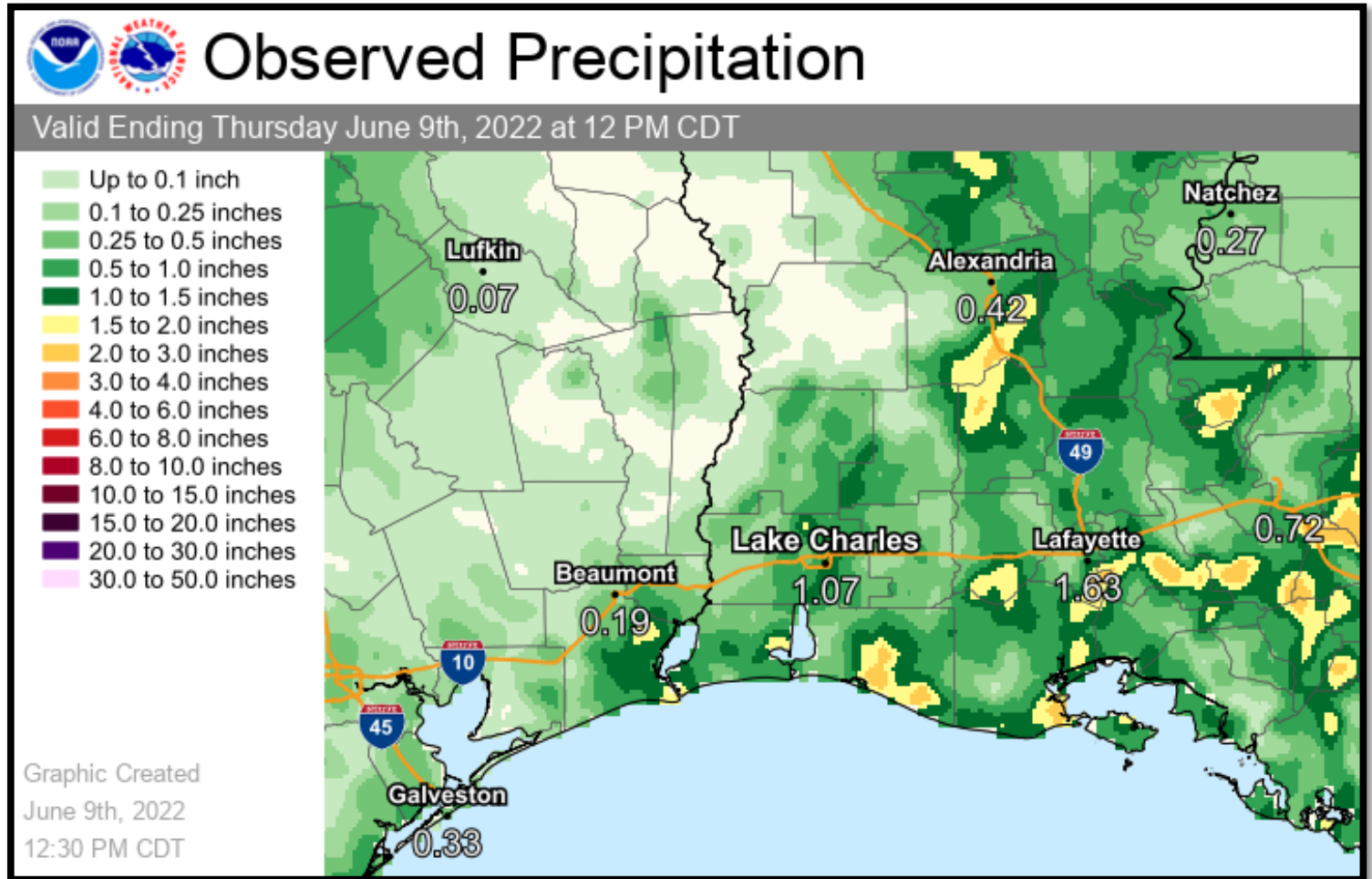


## TOP STORY:

- **Hot!**
- **Mostly dry, but...**
- **Low end rain chances, mainly across parts of east and south central LA**
- **Quiet tropics**

	<b>Low Temperatures</b>	<b>High Temperatures</b>	<b>Chance For Rain</b>
Friday	74-76 F	93-96 F	10-40%
Saturday	73-76 F	93-97 F	10-30%
Sunday	74-76 F	93-98 F	10-15%
Monday	75-77 F	92-98 F	<10%
Tuesday	74-76 F	92-97 F	<10%
Wednesday	73-76 F	93-97 F	10-15%
Thursday	74-76 F	94-99 F	10-20%
Normals This Time of Year	68-72 F	88-90 F	25%-35%

Higher rainfall amounts were spotty, with most of this occurring late last week and through the weekend.

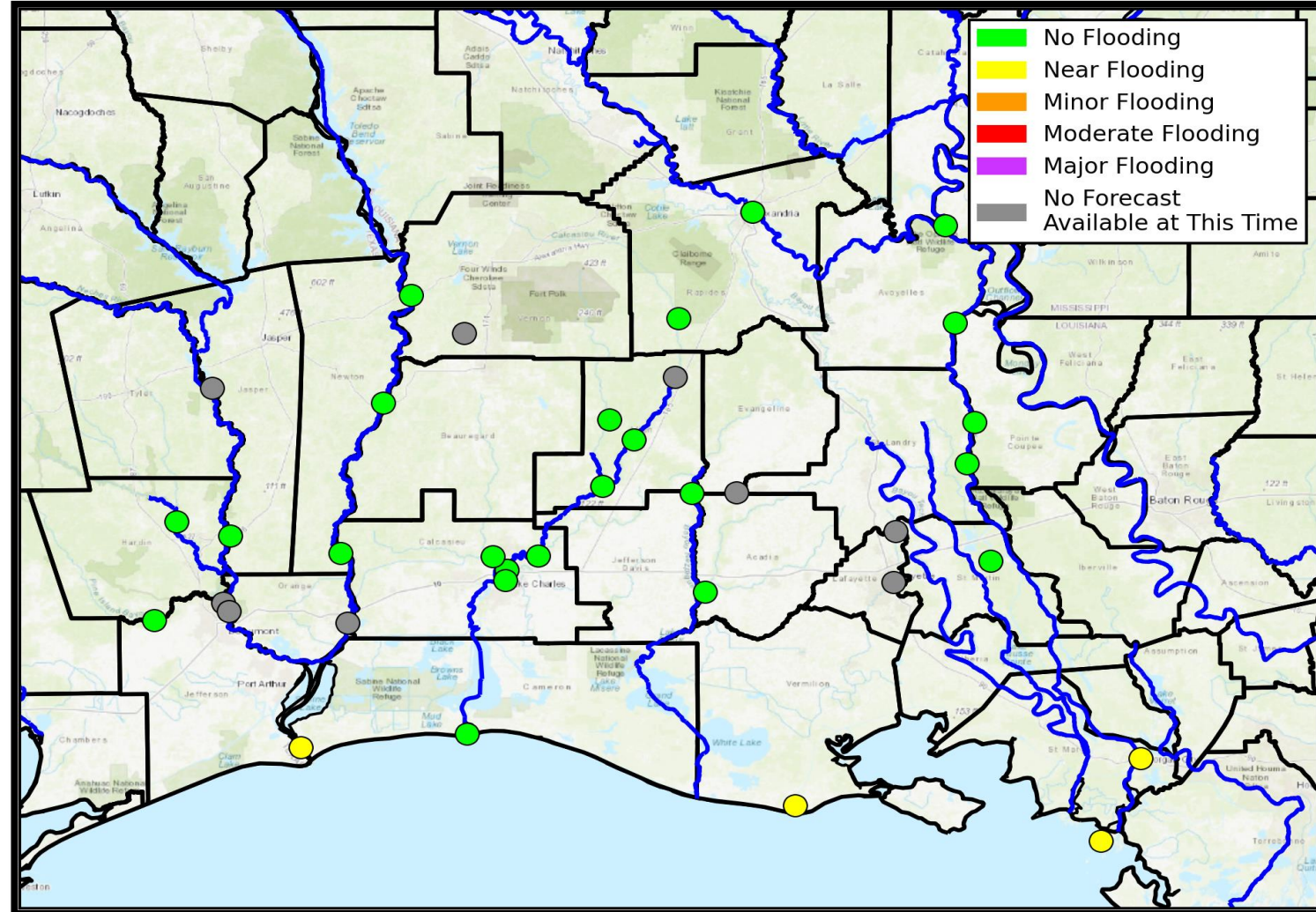


# River Forecasts



Lake Charles  
WEATHER FORECAST OFFICE

- No Rivers in flood
- Tides running up to 1 foot above the astronomical tide

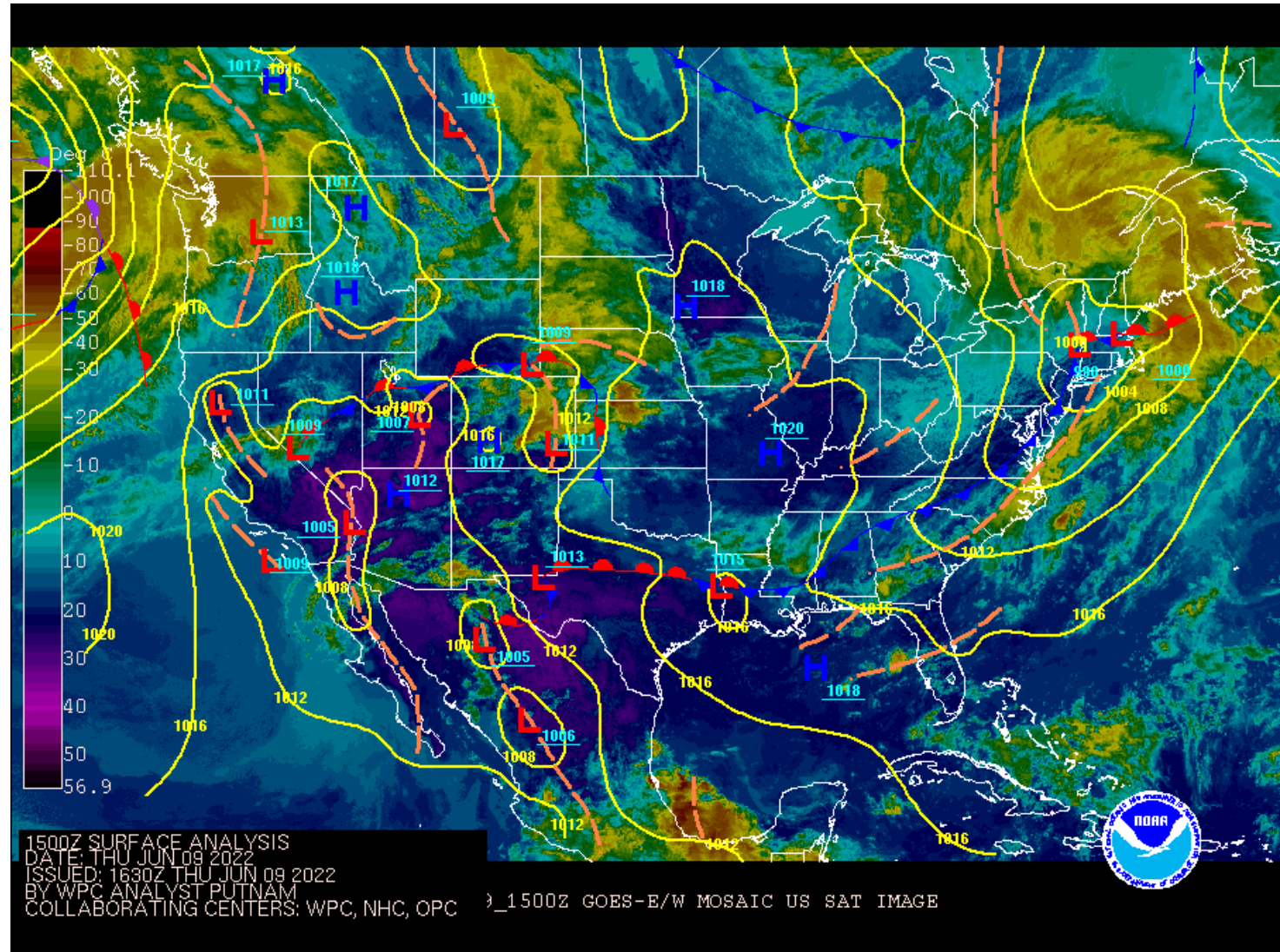


# Surface Weather Map with Fronts



Lake Charles  
WEATHER FORECAST OFFICE

A weak surface front has sagged into parts of central Louisiana.

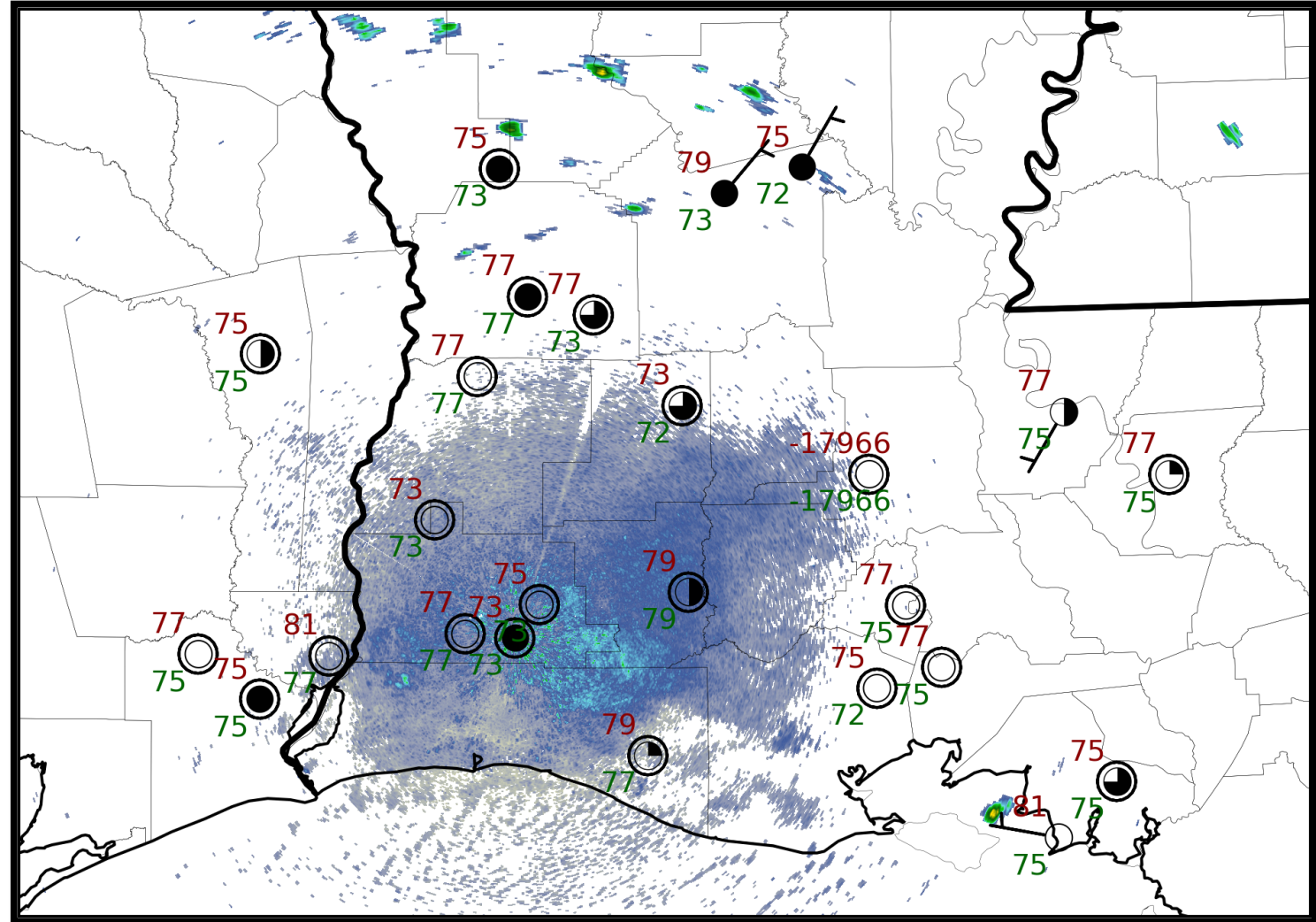


# 6 am Weather Observations



Lake Charles  
WEATHER FORECAST OFFICE

Morning Temperatures in the mid to upper 70s with isolated light showers across central Louisiana.

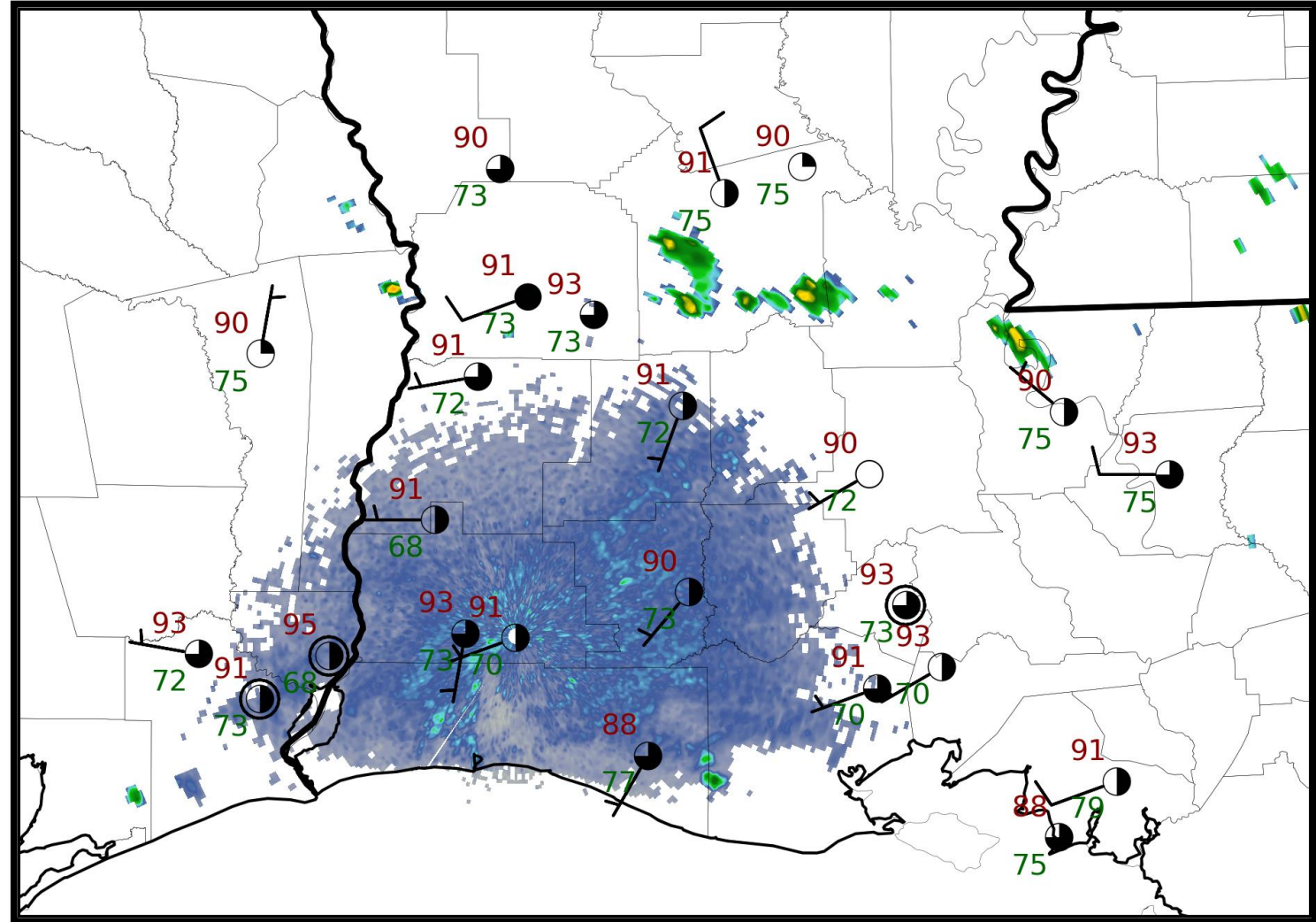


# 2 pm Weather Observations



Lake Charles  
WEATHER FORECAST OFFICE

Temperatures generally in the lower 90s, with isolated showers across northern parts of the area and near the coast.



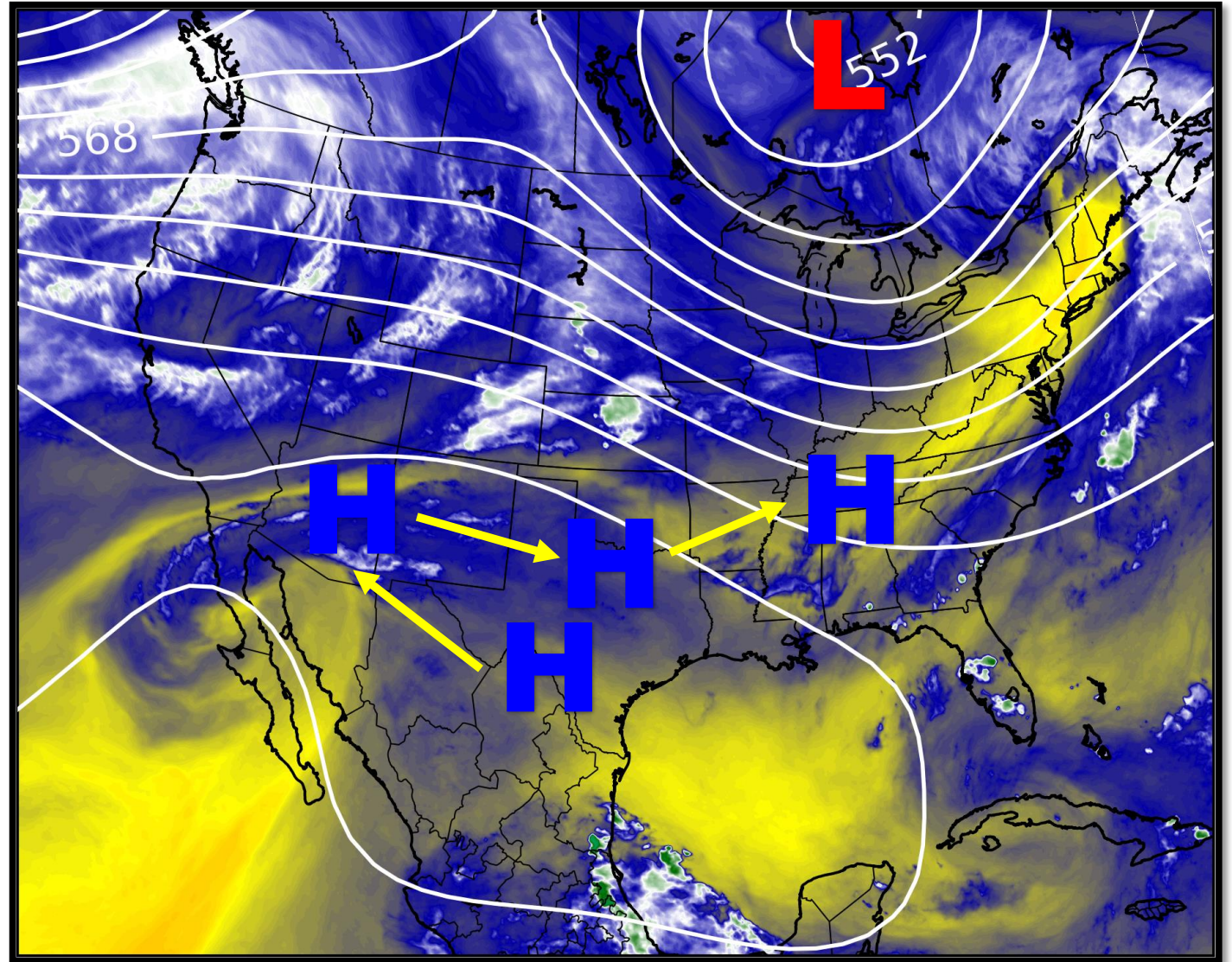
# Upper Level Steering Patterns



Lake Charles  
WEATHER FORECAST OFFICE

Expansive high pressure aloft centered over northern Mexico and Texas.

This ridge, how it evolves, and upper level disturbances travelling through the flow around it will be the primary driver of our weather over the next week.

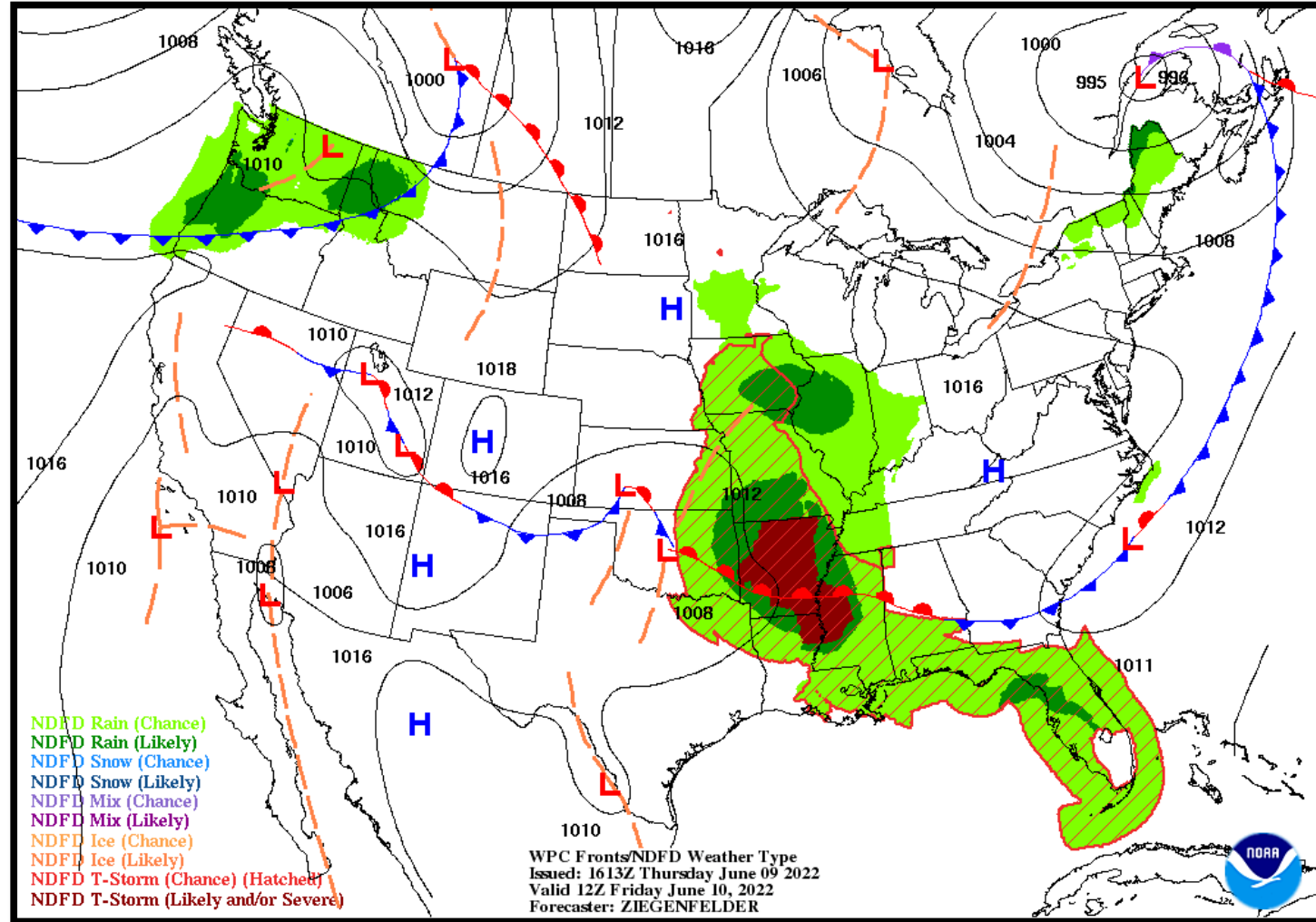






### NWS LCH REGIONAL WEATHER

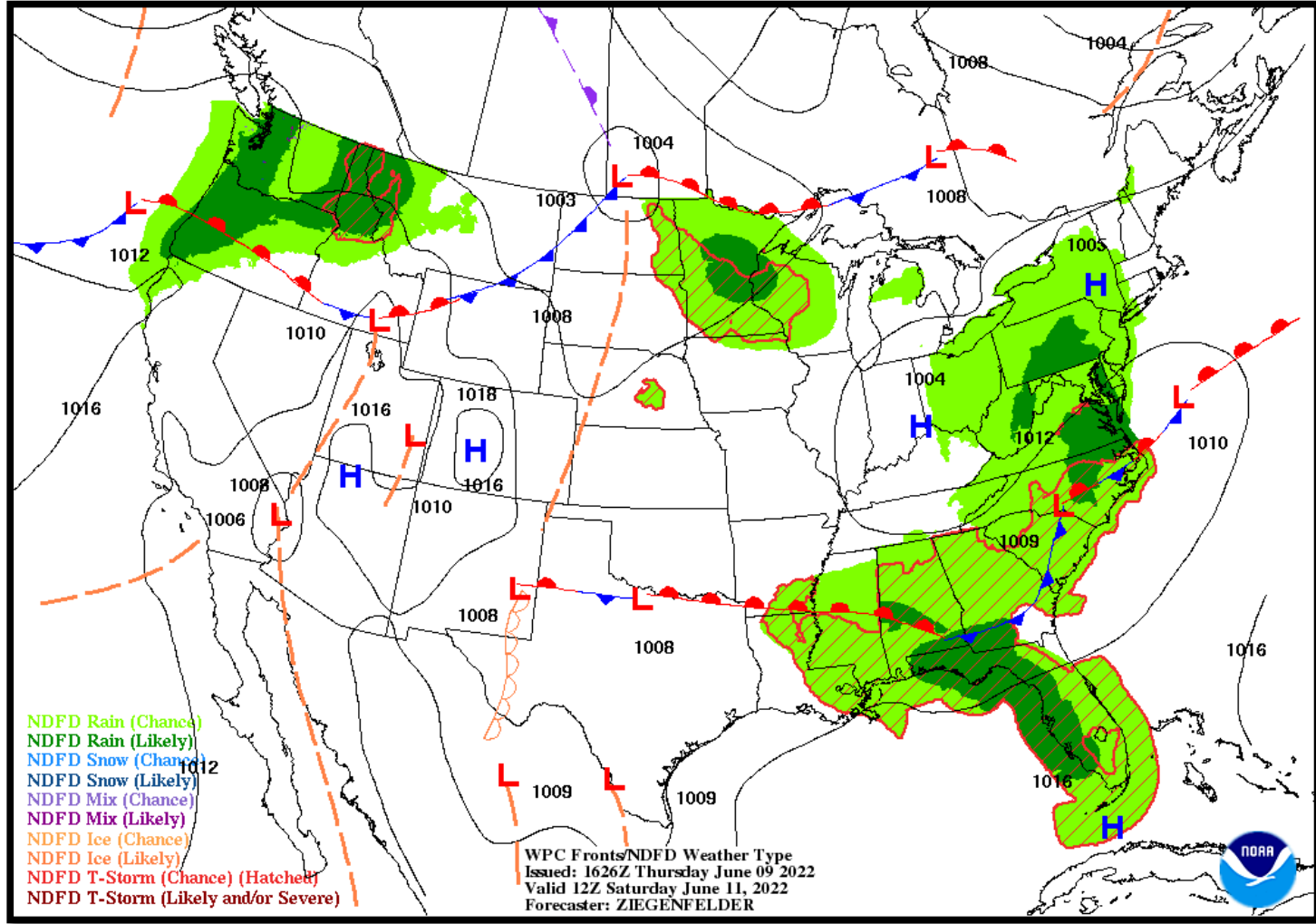
Low Temperature	74-76 F
High Temperature	93-96 F
Wind	SW 5-10 mph
Rain Chances	10-40%
Weather Hazards	Thunderstorms





### NWS LCH REGIONAL WEATHER

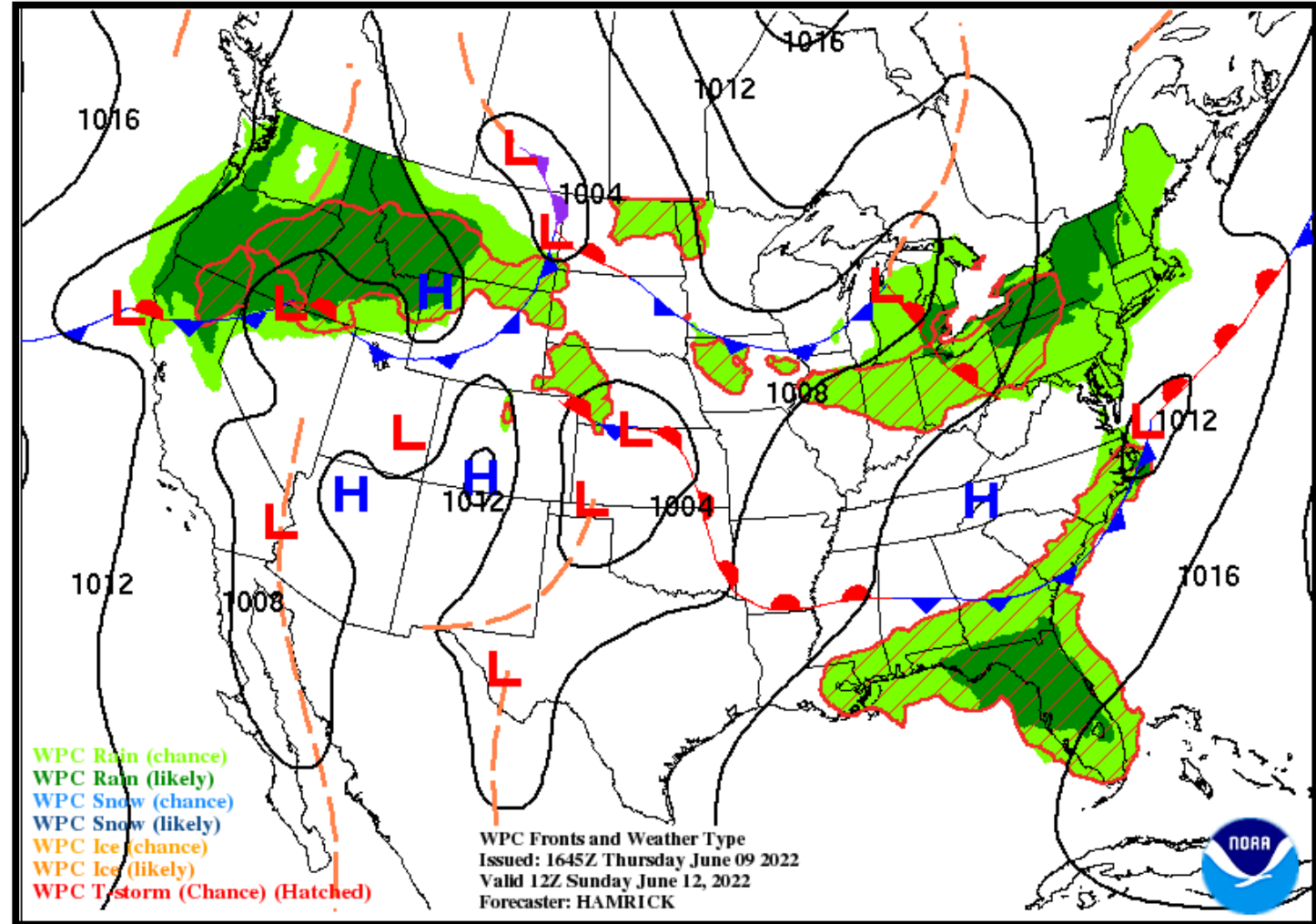
Low Temperature	73-76 F
High Temperature	93-97 F
Wind	SW 5-10 mph
Rain Chances	10-30%
Weather Hazards	Thunderstorms





### NWS LCH REGIONAL WEATHER

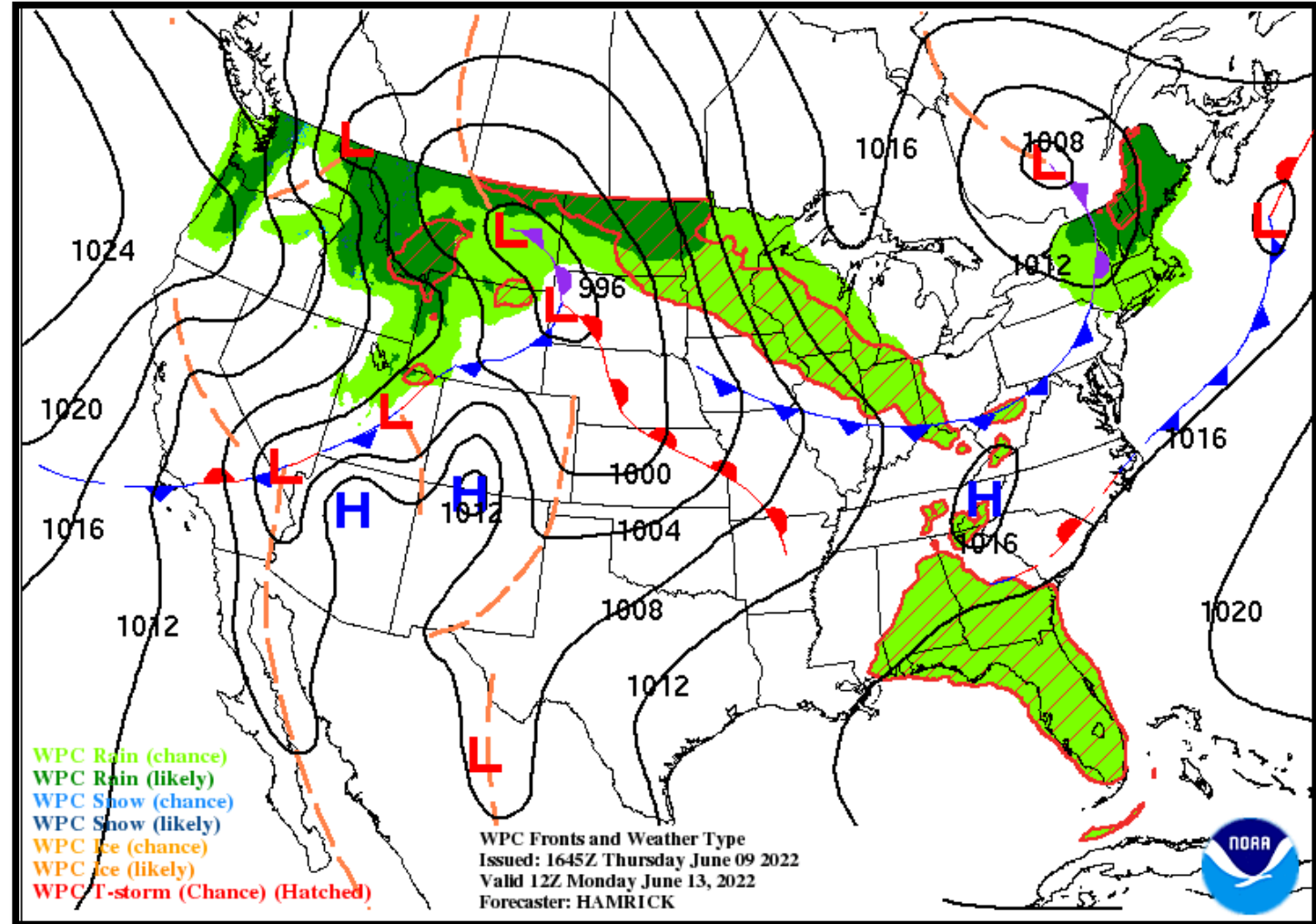
Low Temperature	74-76 F
High Temperature	93-98 F
Wind	SW 10 mph
Rain Chances	10-15%
Weather Hazards	Thunderstorms





### NWS LCH REGIONAL WEATHER

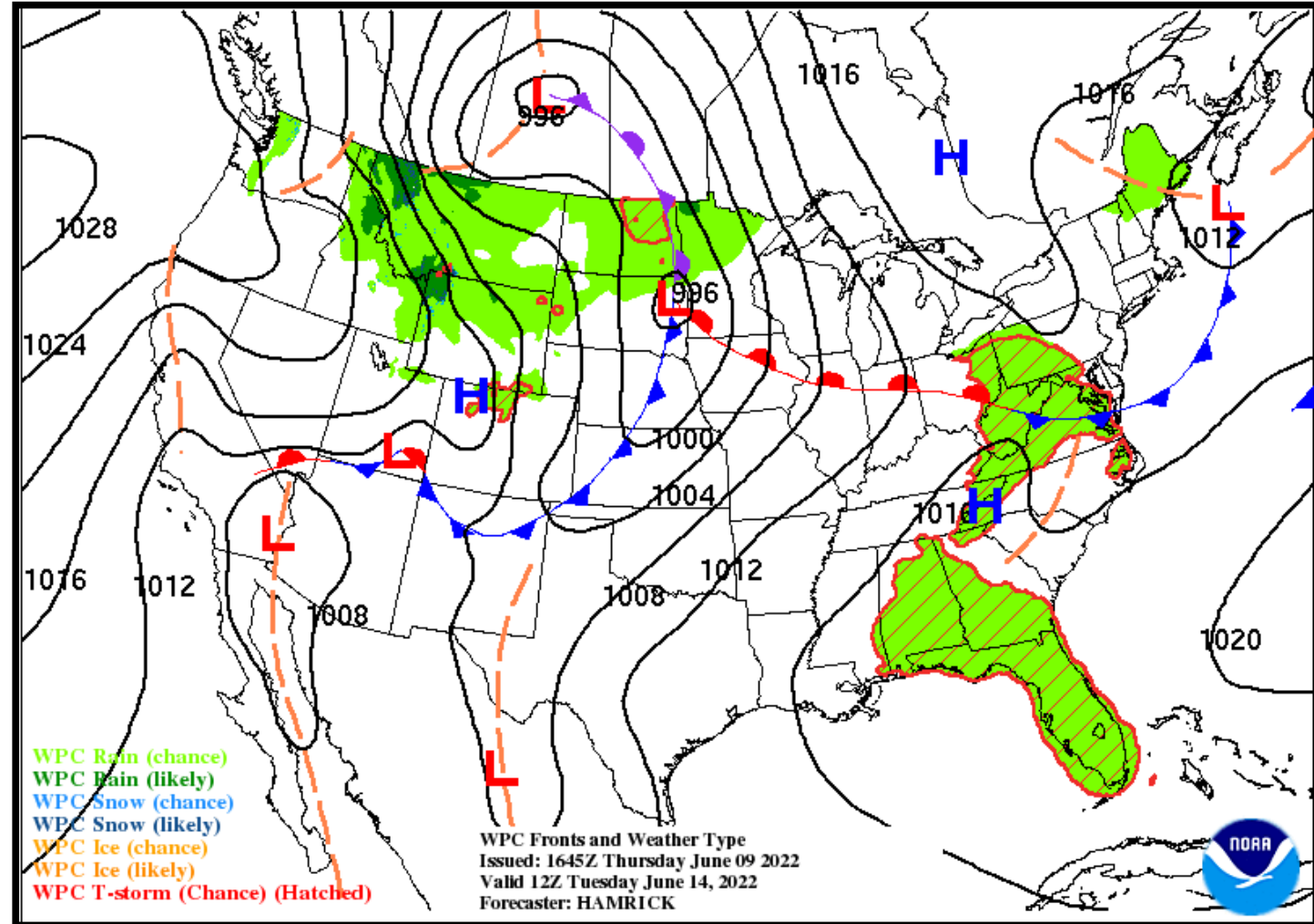
Low Temperature	75-77 F
High Temperature	92-98 F
Wind	SSW 10-15 mph
Rain Chances	<10%
Weather Hazards	Thunderstorms





### NWS LCH REGIONAL WEATHER

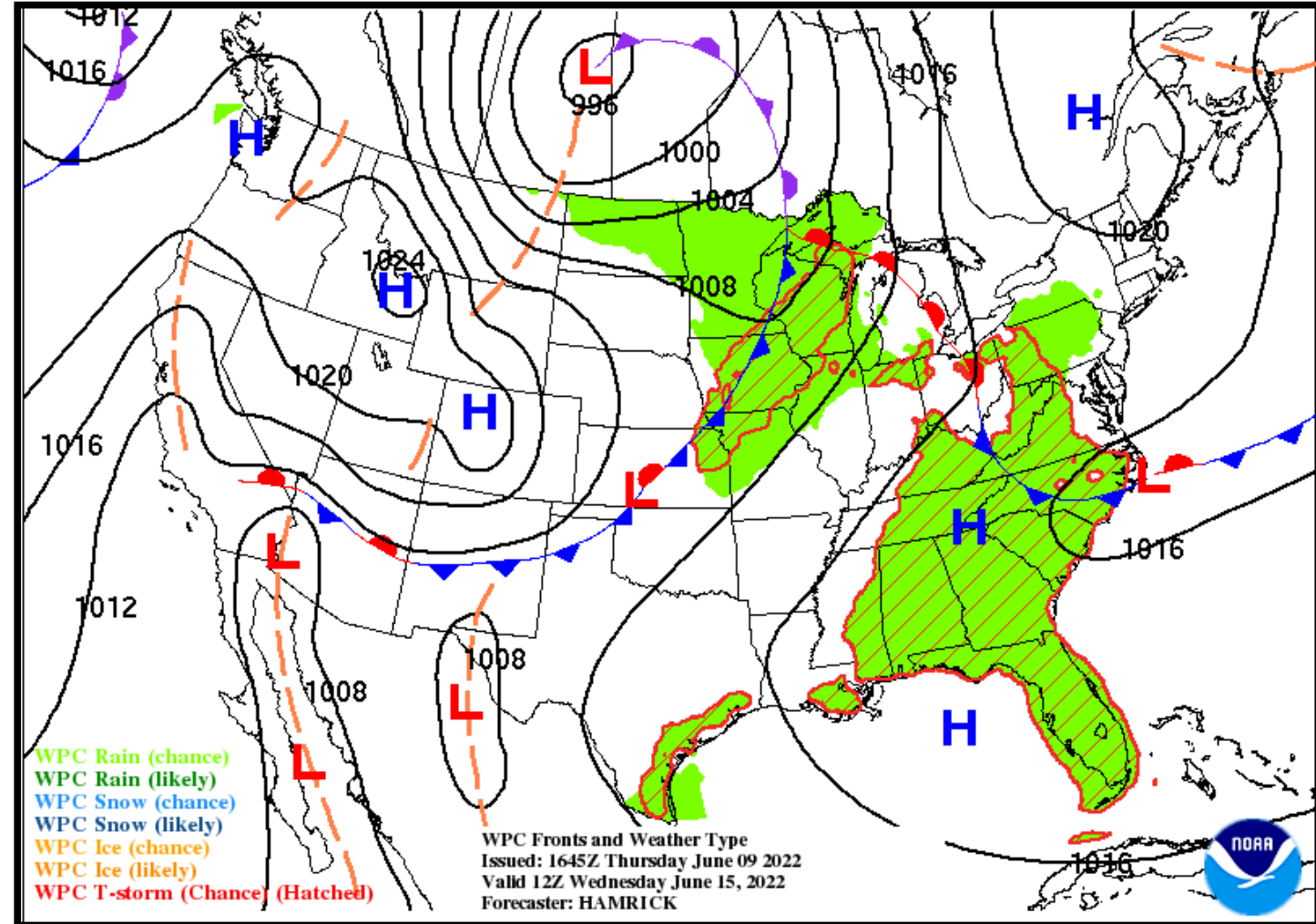
Low Temperature	74-76 F
High Temperature	92-97 F
Wind	S 10-15 mph
Rain Chances	<10%
Weather Hazards	Thunderstorms





### NWS LCH REGIONAL WEATHER

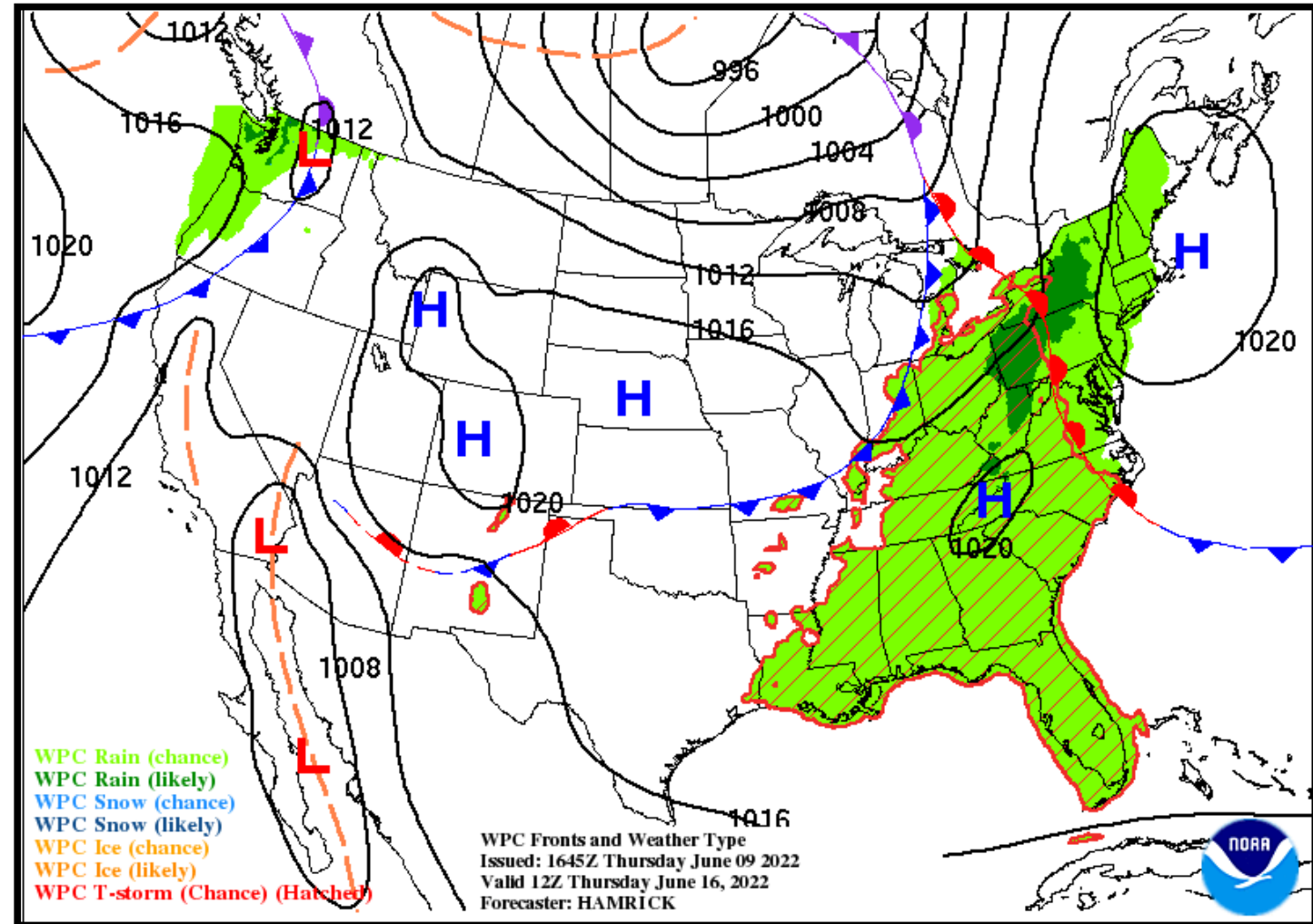
Low Temperature	73-76 F
High Temperature	93-97 F
Wind	S 5-10 mph
Rain Chances	10-15%
Weather Hazards	Thunderstorms





### NWS LCH REGIONAL WEATHER

Low Temperature	74-76 F
High Temperature	94-99 F
Wind	S 5-10 mph
Rain Chances	10-20%
Weather Hazards	Thunderstorms



# Weekly Weather Summary Table



Lake Charles  
WEATHER FORECAST OFFICE

Color Codes Except for Temperatures	Weather	Friday 06/10/22	Saturday 06/11/22	Sunday 06/12/22	Monday 06/13/22	Tuesday 06/14/22	Wednesday 06/15/22	Thursday 06/16/22
Yellow = Low Threat	Rain Total	<b>0.50-1.0"</b>	<0.10"	None	None	None	None	None
Orange = Moderate Threat	T-Storm/ Lightning	2 to 3	1 to 2	0	0	0	1 to 2	1 to 2
Red = High Threat	Tornado/Hail/ Dmg Wind	<b>Slight</b>	None	None	None	None	None	None
	Wind	SW 5-10 mph	SW 5-10 mph	SW 10 mph	SSW 10-15 mph	S 10-15 mph	S 5-10 mph	S 5-10 mph
	Tides	<b>Above Normal</b>	<b>Above Normal</b>	<b>Above Normal</b>	<b>Above Normal</b>	<b>Above Normal</b>	<b>Above Normal</b>	<b>Above Normal</b>
	Wave Height	Near: 1-3 ft Off: 3-4 ft	<b>Near: 1-4 ft Off: 4-5 ft</b>	<b>Near: 1-4 ft Off: 4-5 ft</b>	<b>Near: 1-3 ft Off: 3-4 ft</b>	<b>Near: 1-3 ft Off: 3-4 ft</b>	<b>Near: 1-4 ft Off: 4-5 ft</b>	<b>Near: 1-4 ft Off: 4-5 ft</b>
	Temperature	<b>Low: 74-76 F</b>	Low: 73-76 F	<b>Low: 74-76 F</b>	<b>Low: 75-77 F</b>	<b>Low: 74-76 F</b>	Low: 73-76 F	<b>Low: 74-76 F</b>
	Normal Low: 68-72 F Normal High: 88-90 F	<b>High: 93-96 F</b>	<b>High: 93-97 F</b>	<b>High: 93-98 F</b>	<b>High: 92-98 F</b>	<b>High: 92-97 F</b>	<b>High: 93-97 F</b>	<b>High: 94-99 F</b>

Color Codes For Temperatures
Yellow=5 F above normal
Orange=10 F above normal
Red=15 F above normal
Vry Lt Blue=5 F below normal
Lt Blue=10 F below normal
Blue=15 F below normal



