



# Weekly Weather Update

2:30 PM CDT  
Thursday, June 10, 2021

Roger Erickson, *NWS Lake Charles*





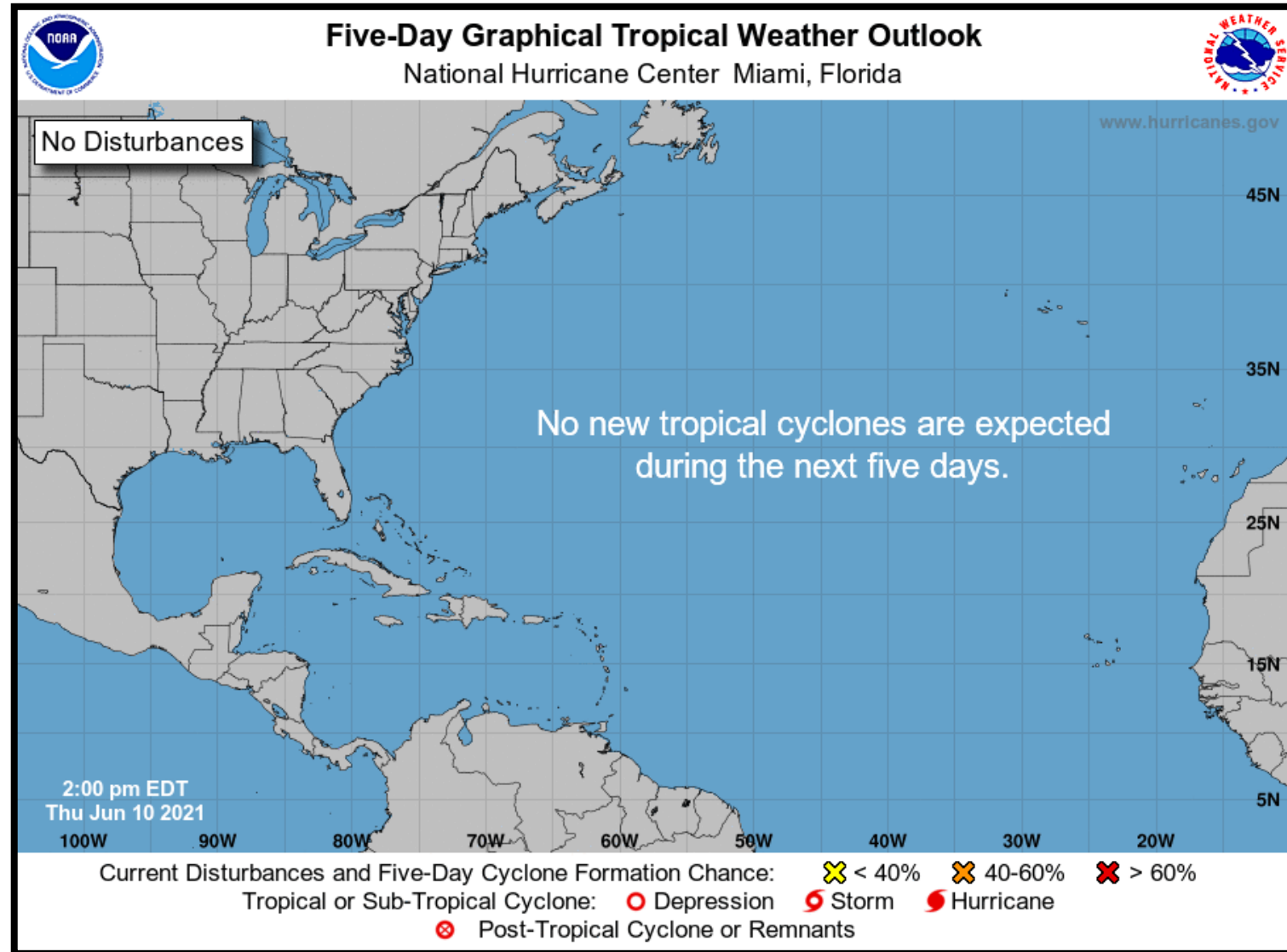
## TOP STORY:

**Dry weather continues through Saturday, before rain chances go back up Sunday into next week.**

	Low Temperatures	High Temperatures	Chance For Rain
Friday	73-76 F	89-93 F	<10%
Saturday	72-75 F	90-93 F	10%
Sunday	74-76 F	92-94 F	25-50%
Monday	73-76 F	91-93 F	35-45%
Tuesday	72-75 F	90-92 F	35-45%
Wednesday	72-75 F	89-90 F	40-45%
Thursday	69-73 F	87-89 F	40-45%
Normals This Time of Year	68-72 F	88-90 F	25%-35%

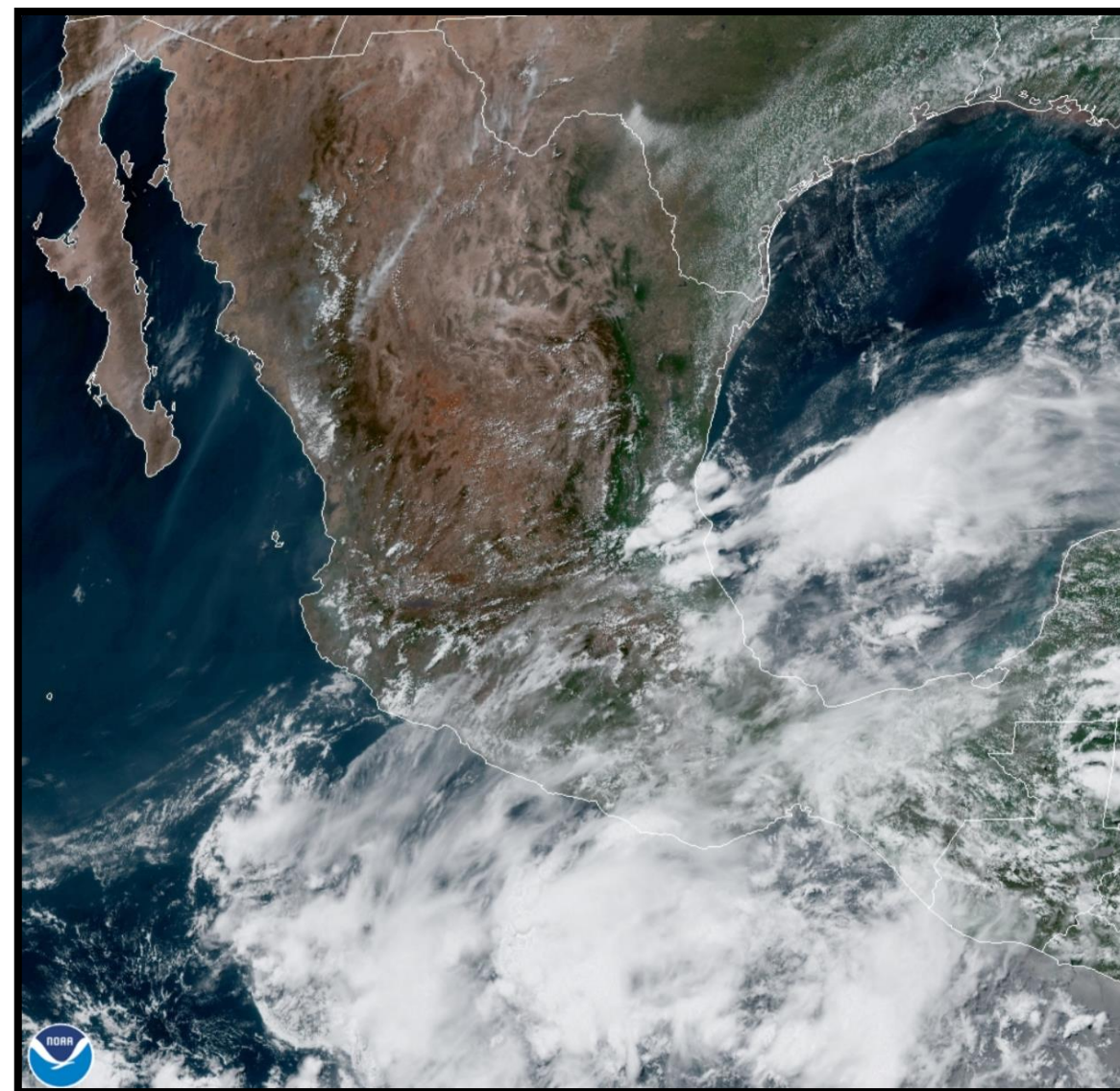


**No tropical activity is expected through at least Monday in the Gulf, Caribbean, or Atlantic.**



There has been a lot of interest in the central America region, where clusters of thunderstorms have formed. Some of these have the potential to become a tropical cyclone in the eastern Pacific.

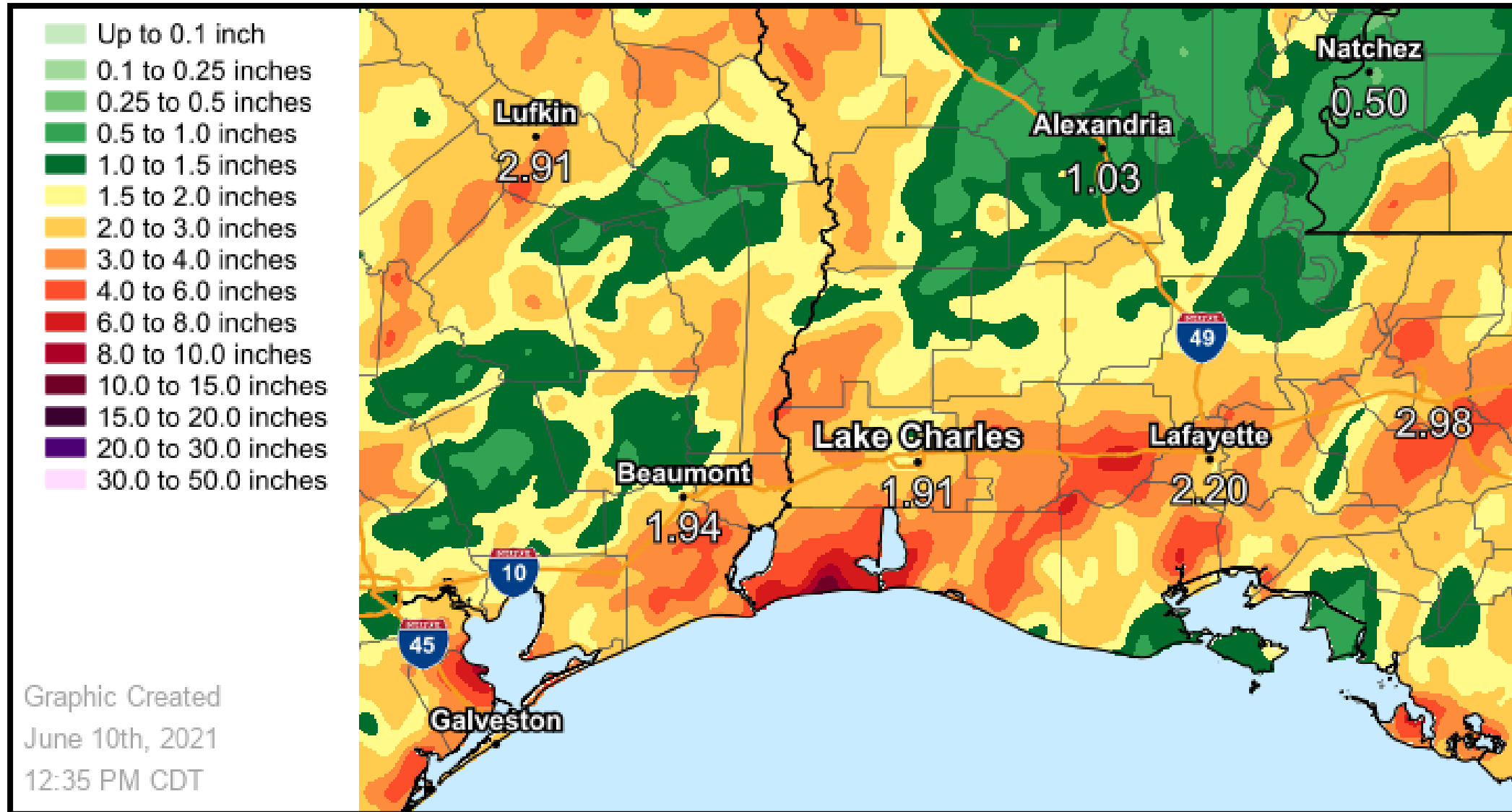
While no threat is expected in the Gulf through early next week, it will be worth monitoring beyond that time frame to see if anything gets organized in the Bay of Campeche.



# Rainfall in the Past Week

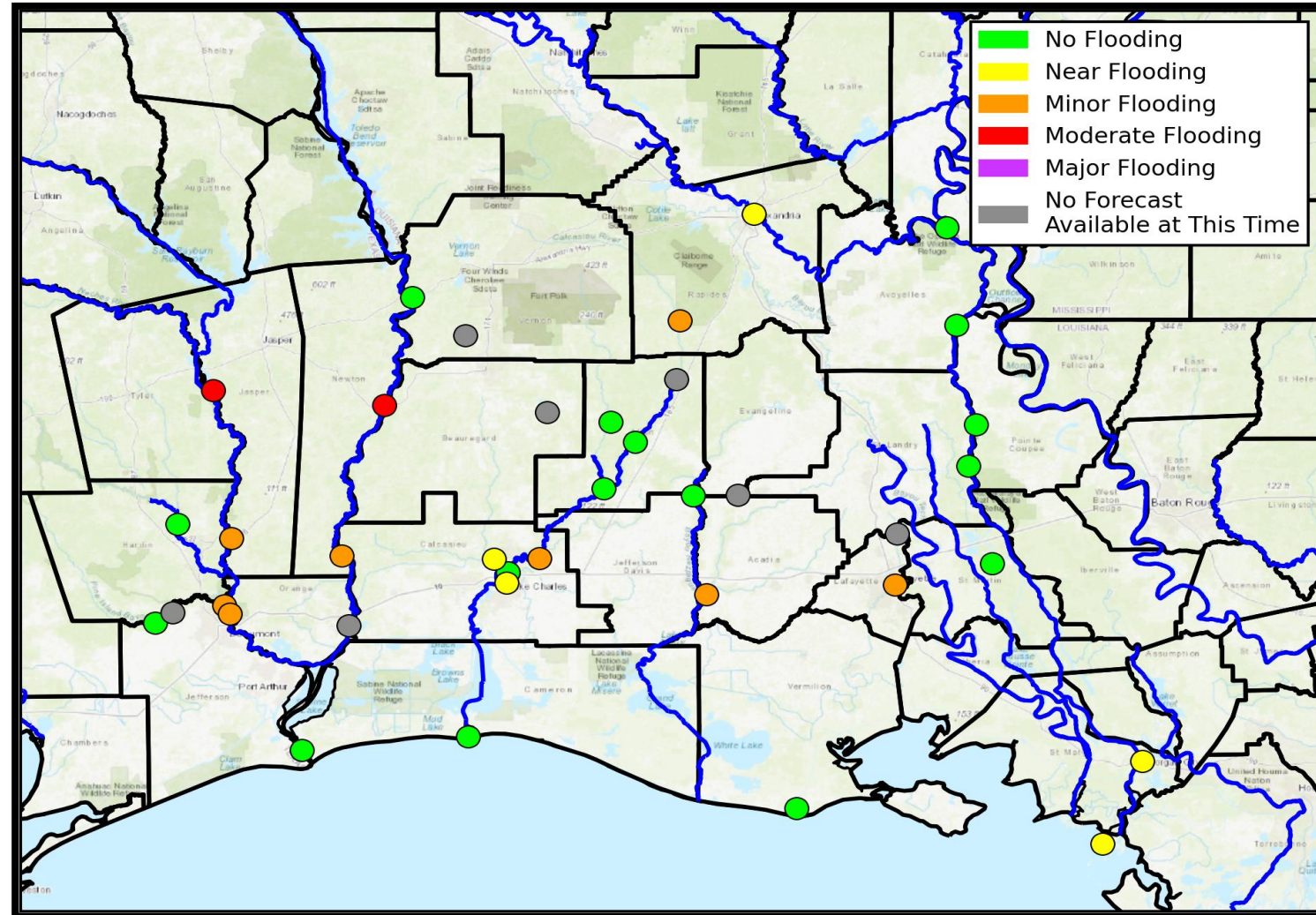


Lake Charles  
WEATHER FORECAST OFFICE



Moderate flooding is forecast on the Neches near Town Bluff and the Sabine near Bon Wier.

Minor flooding is forecast on the remainder of the Neches and Sabine, as well as parts of the Calcasieu, Mermentau, and Vermilion.

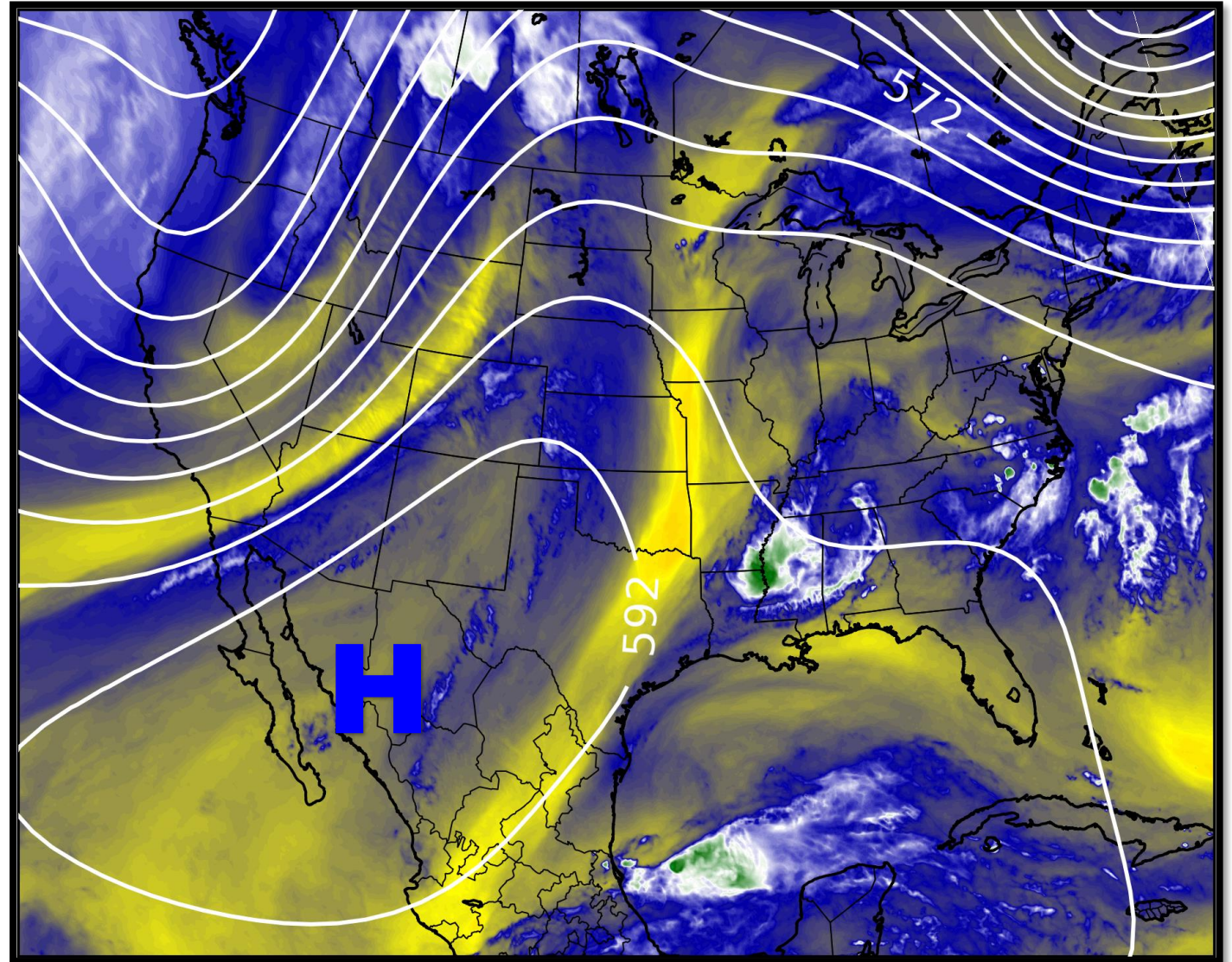


# Upper Level Steering Patterns



Lake Charles  
WEATHER FORECAST OFFICE

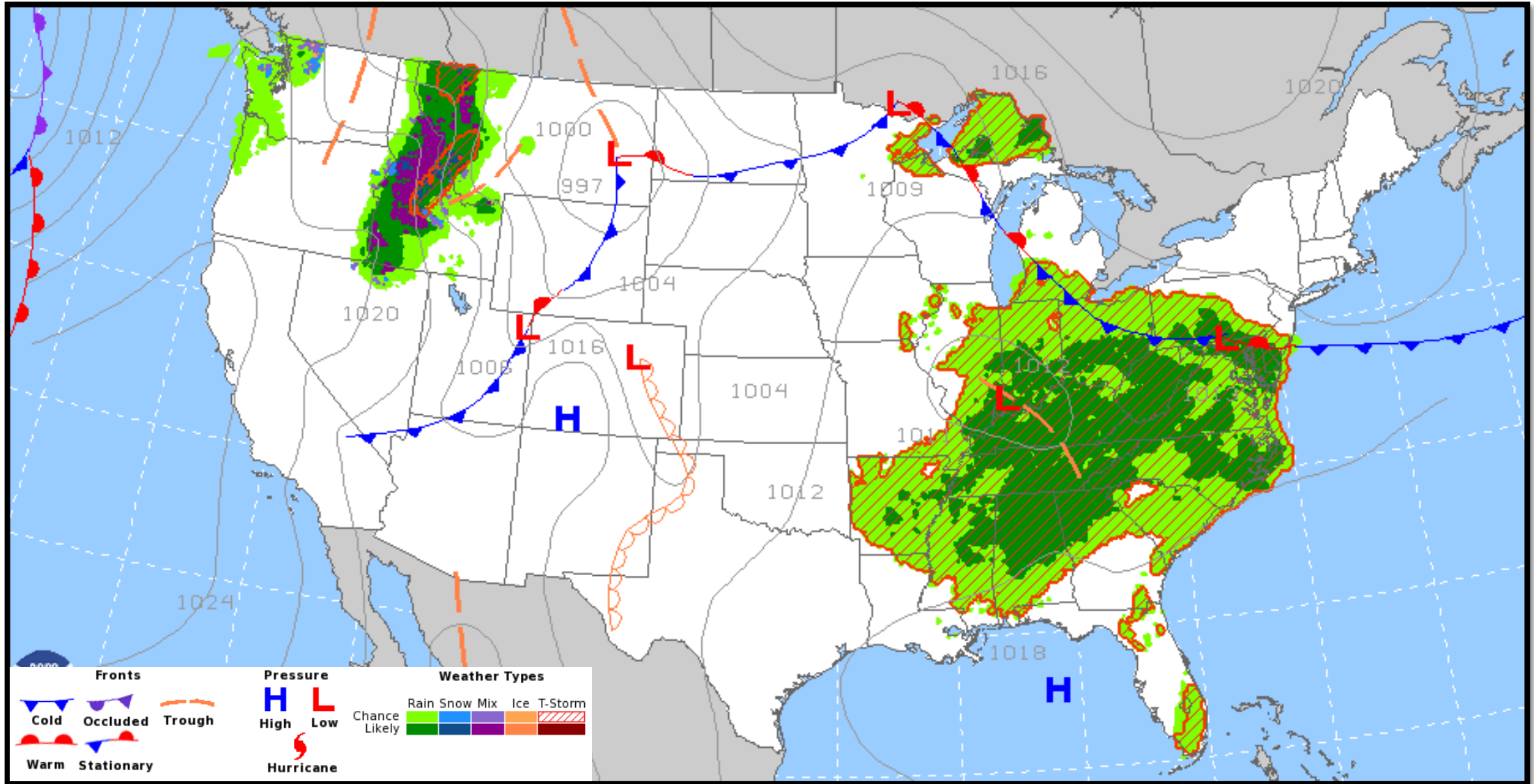
High pressure is over Mexico  
with a low pressure trough on  
the west coast of the US.



# Surface Weather Map with Fronts



Lake Charles  
WEATHER FORECAST OFFICE





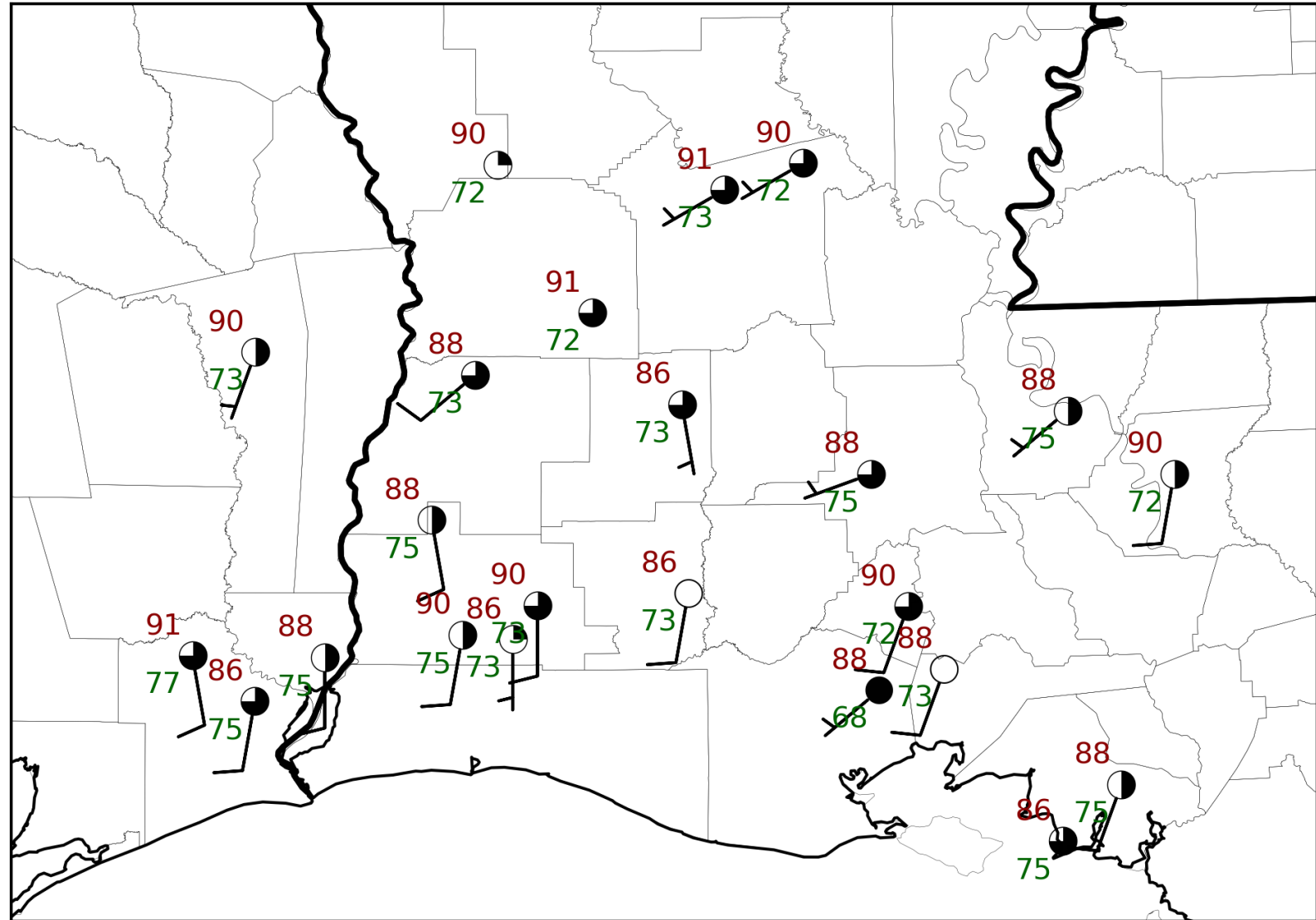


# 2 pm Weather Observations



Lake Charles  
WEATHER FORECAST OFFICE

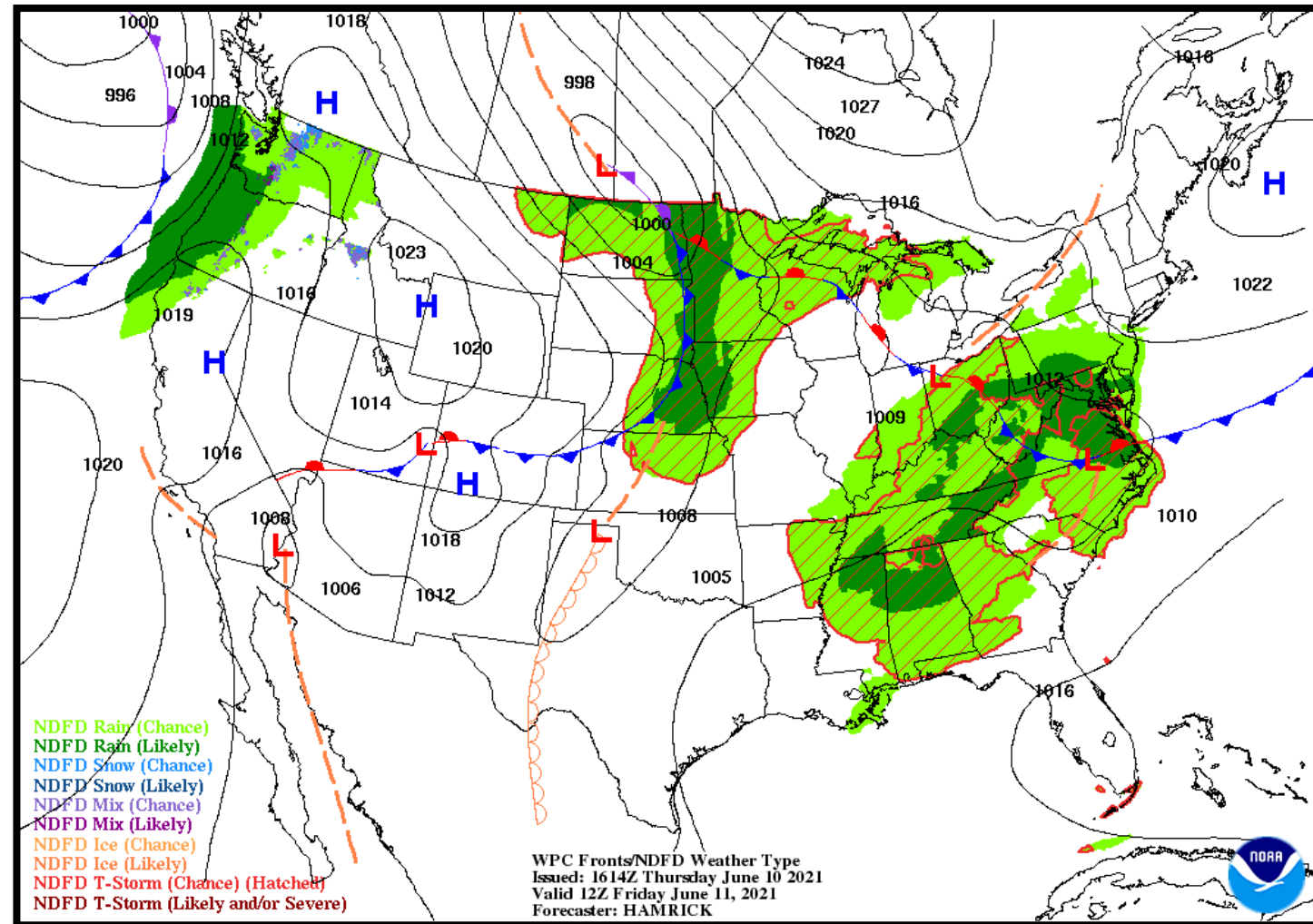
Under partly sunny skies, temperatures are in the mid 80s to lower 90s. Winds are out of the south at 5 to 10 mph.





### NWS LCH REGIONAL WEATHER

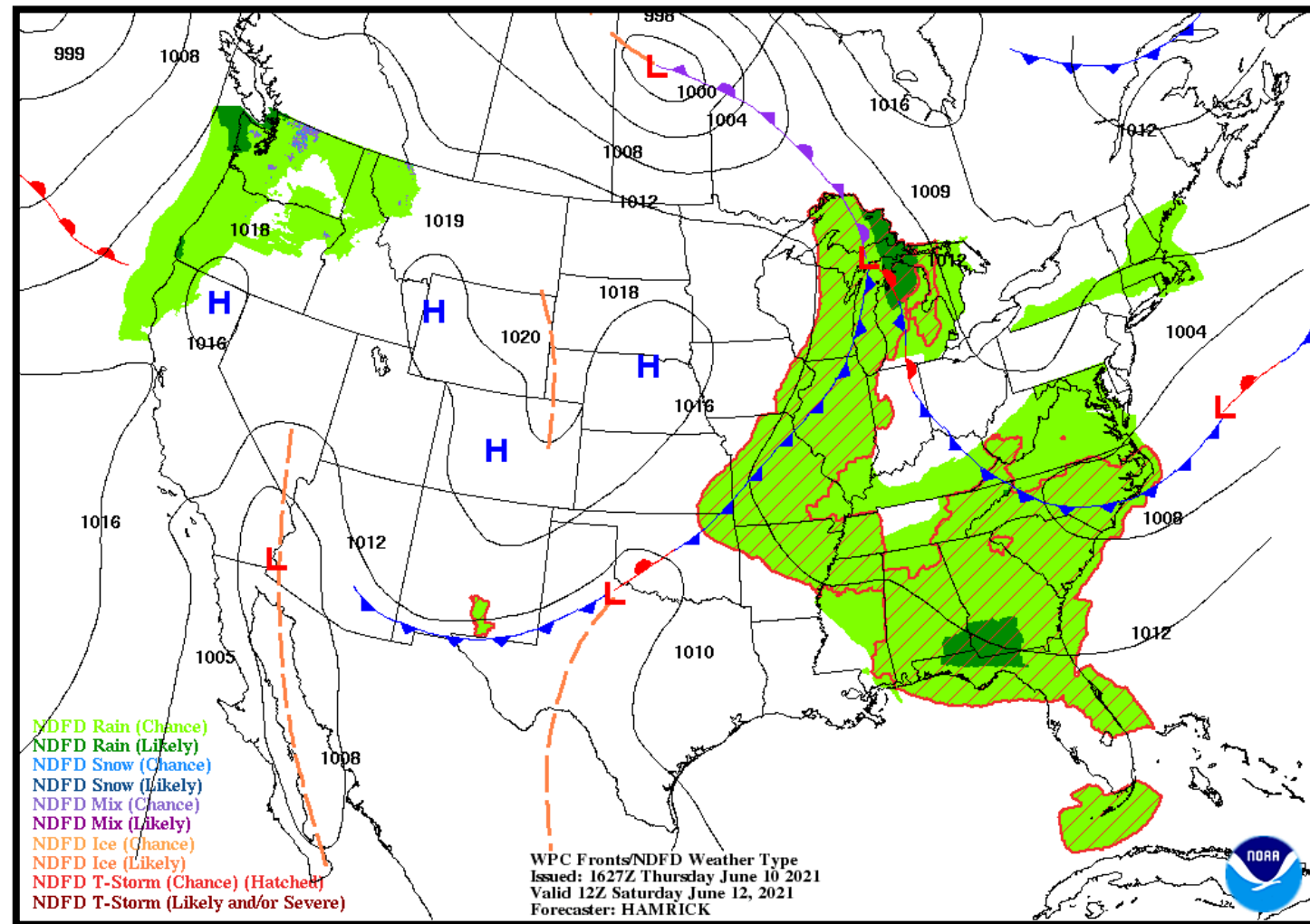
Low Temperature	73-76 F
High Temperature	89-93 F
Wind	SSW 5-10 mph
Rain Chances	<10%
Weather Hazards	None





### NWS LCH REGIONAL WEATHER

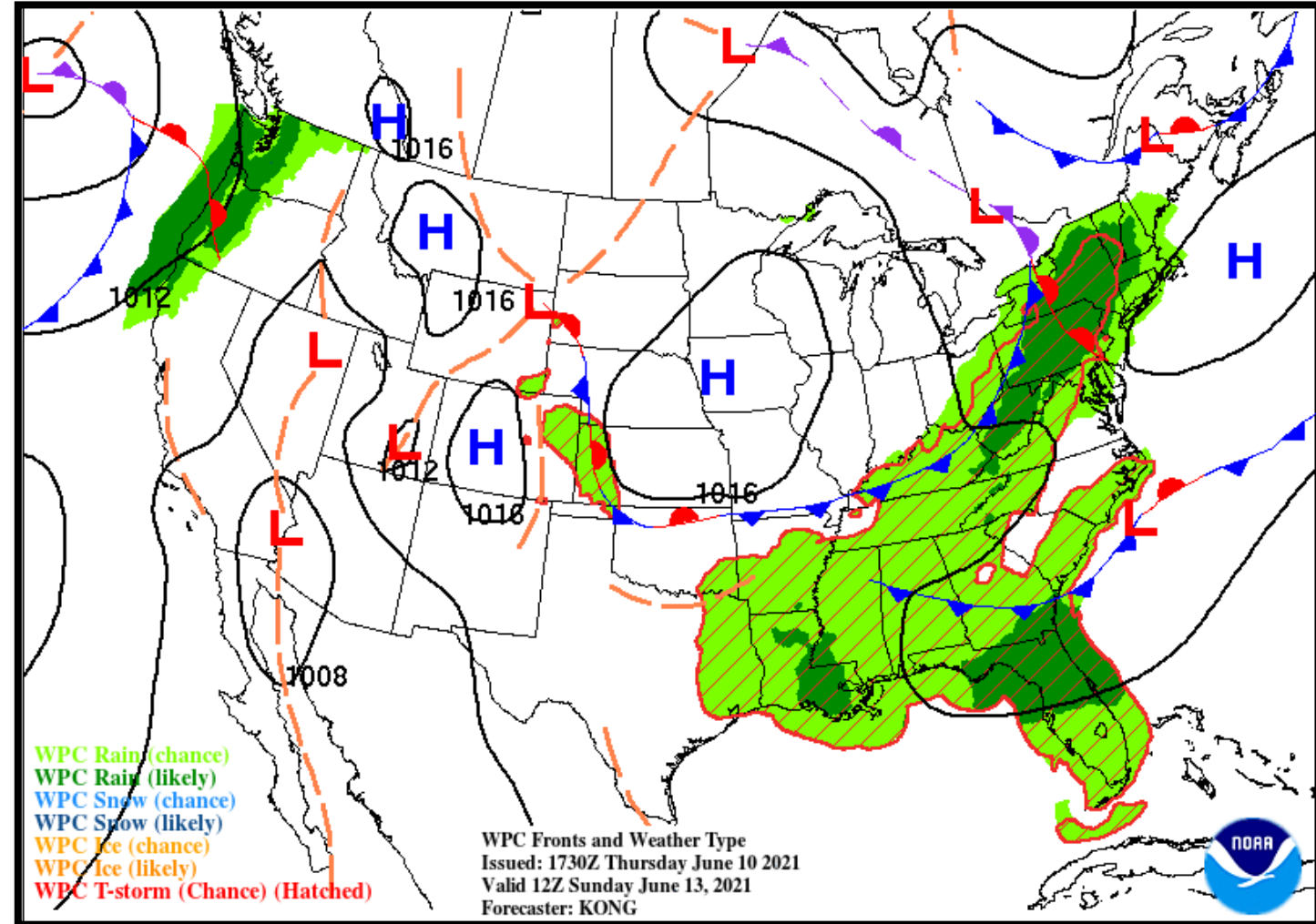
Low Temperature	72-75 F
High Temperature	90-93 F
Wind	WSW 5 mph
Rain Chances	10%
Weather Hazards	None





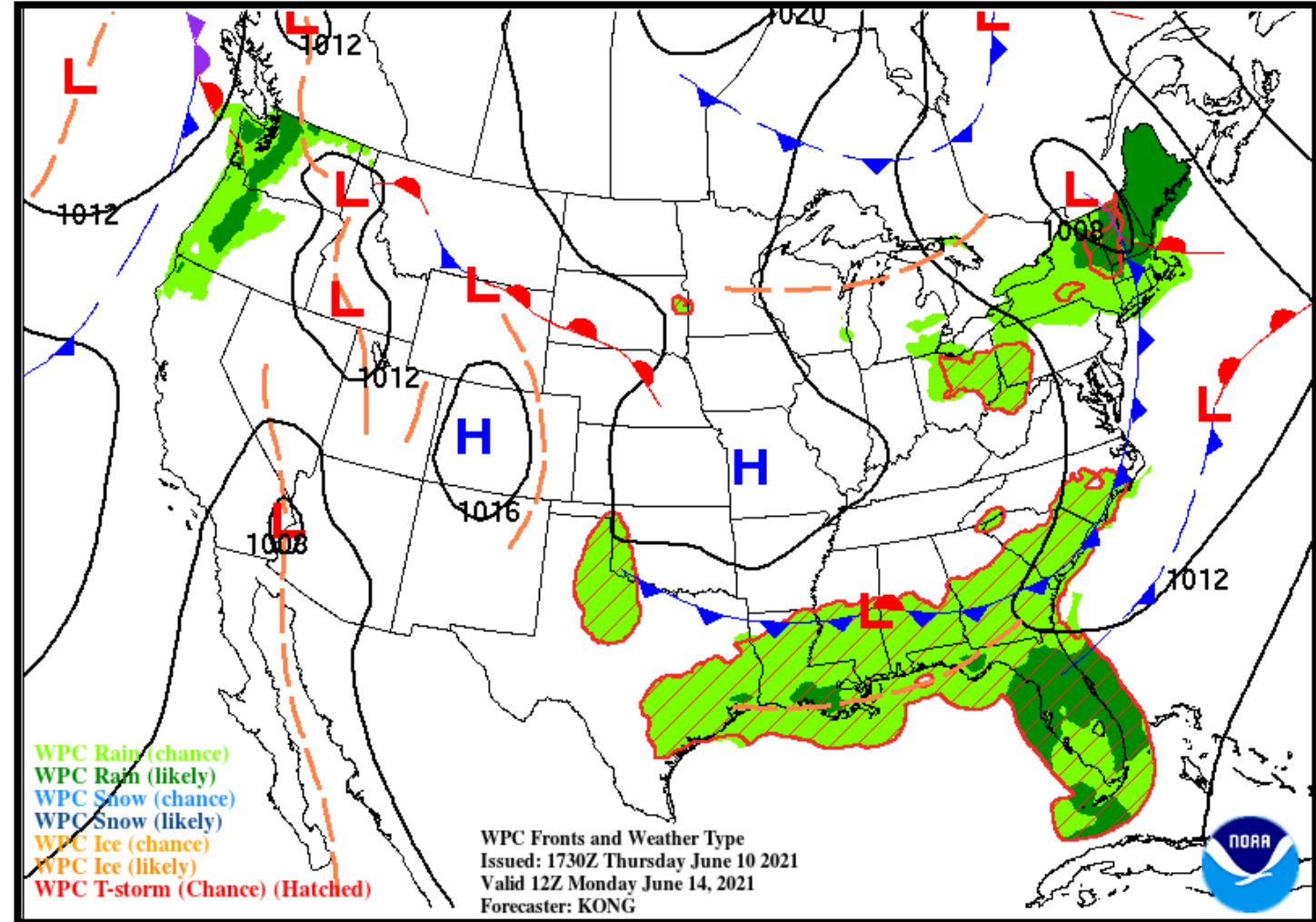
### NWS LCH REGIONAL WEATHER

Low Temperature	74-76 F
High Temperature	92-94 F
Wind	WNW 5 mph
Rain Chances	25-50%
Weather Hazards	Thunderstorms



### NWS LCH REGIONAL WEATHER

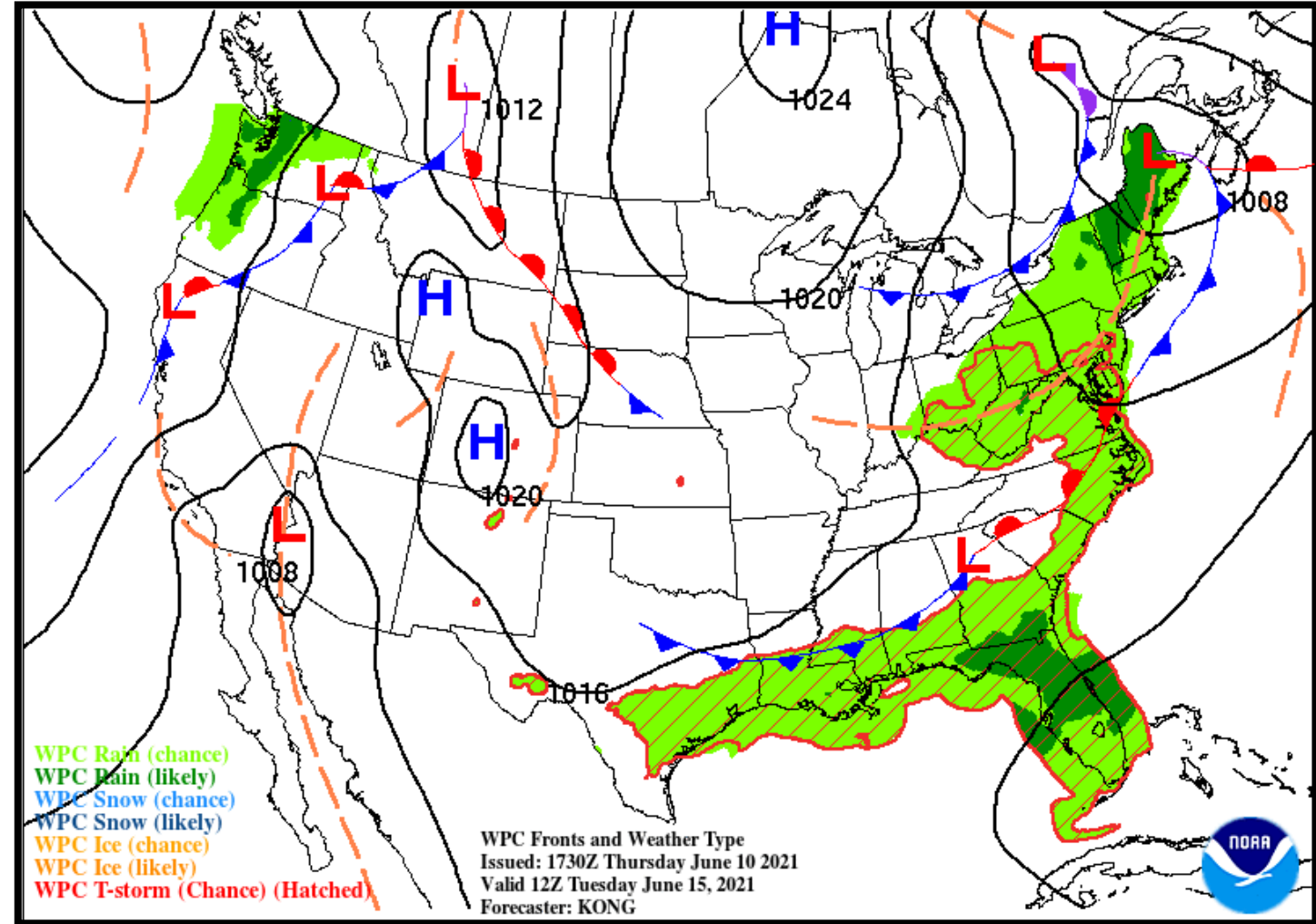
Low Temperature	73-76 F
High Temperature	91-93 F
Wind	NE 5 mph
Rain Chances	35-45%
Weather Hazards	Thunderstorms





### NWS LCH REGIONAL WEATHER

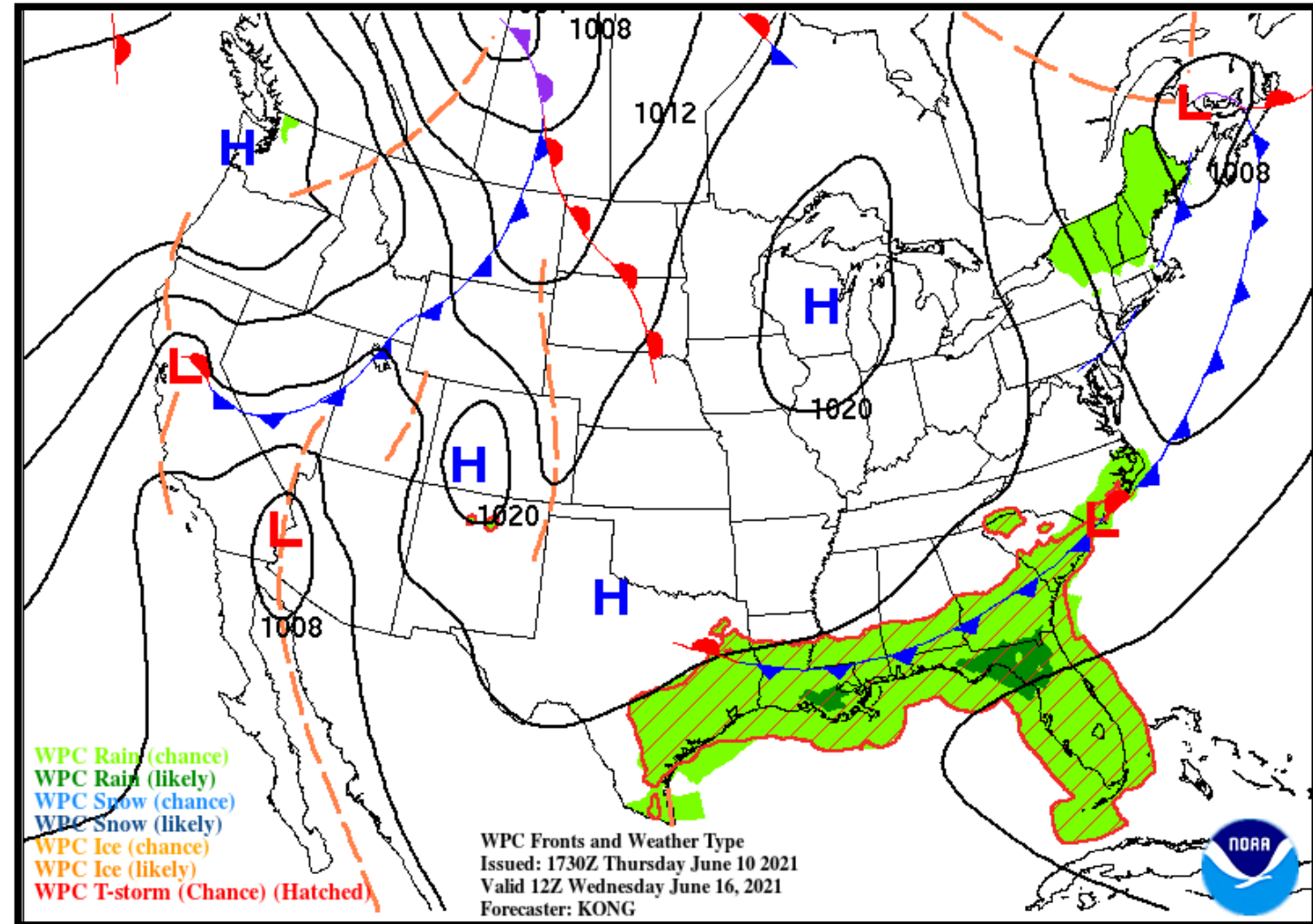
Low Temperature	72-75 F
High Temperature	90-92 F
Wind	NE 0-5 mph
Rain Chances	35-45%
Weather Hazards	Thunderstorms





### NWS LCH REGIONAL WEATHER

Low Temperature	72-75 F
High Temperature	89-90 F
Wind	NE 5 mph
Rain Chances	40-45%
Weather Hazards	Thunderstorms

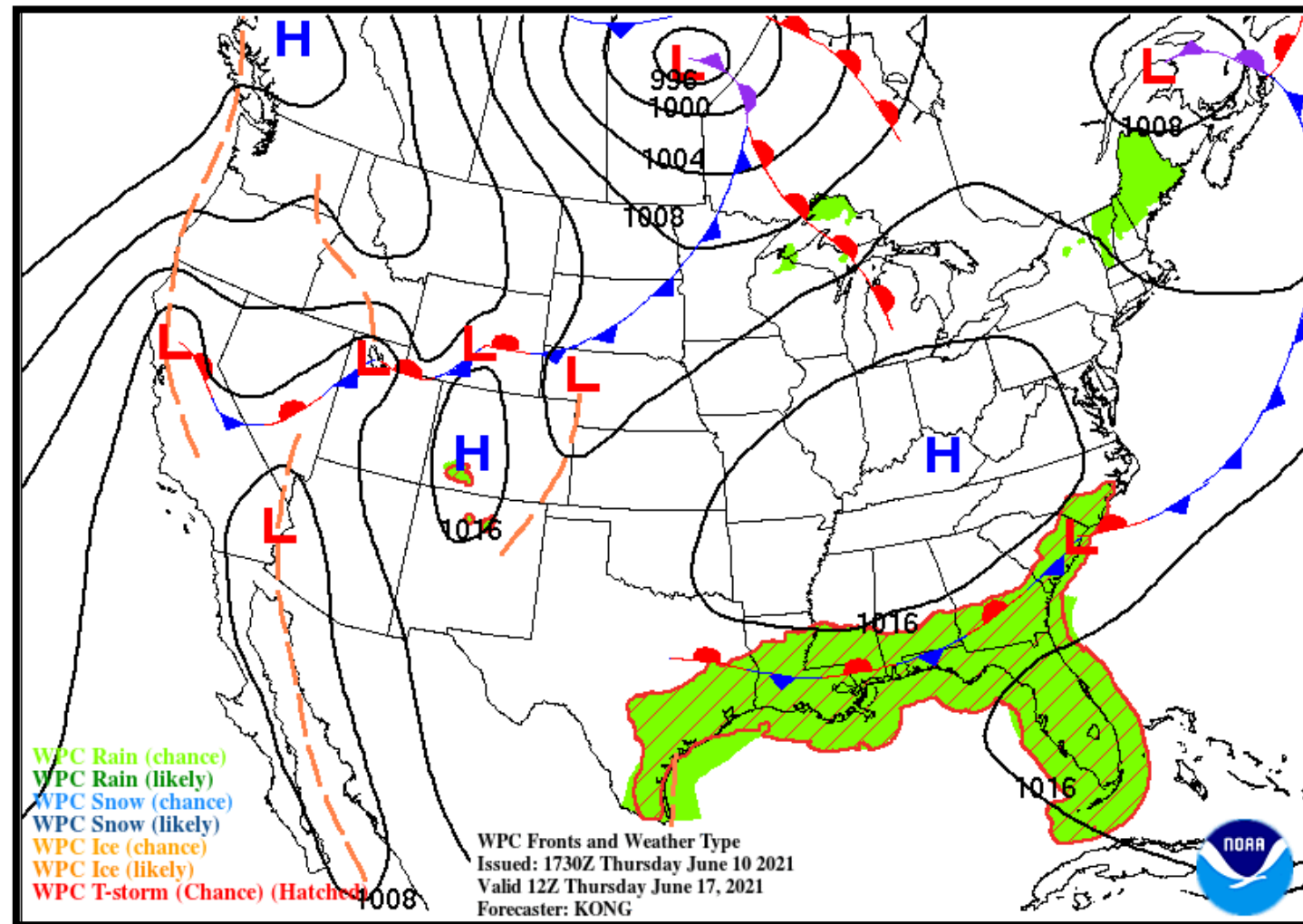






### NWS LCH REGIONAL WEATHER

Low Temperature	69-73 F
High Temperature	87-89 F
Wind	NE 5 mph
Rain Chances	40-45%
Weather Hazards	Thunderstorms



# Weekly Weather Summary Table



Lake Charles  
WEATHER FORECAST OFFICE

Weather	Friday 06/11/21	Saturday 06/12/21	Sunday 06/13/21	Monday 06/14/21	Tuesday 06/15/21	Wednesday 06/16/21	Thursday 06/17/21
Rain Total	None	None	0.10-0.25"	<0.10"	<0.10"	<0.10"	0.10-0.25"
T-Storm/ Lightning	None	None	Scattered	Isolated	Isolated	Isolated	Scattered
Tornado/Hail/ Dmg Wind	None	None	None	None	None	None	None
Wind	SSW 5-10 mph	WSW 5 mph	WNW 5 mph	NE 5 mph	NE 0-5 mph	NE 5 mph	NE 5 mph
Tides	Above Normal	Above Normal	Above Normal	Above Normal	Above Normal	Above Normal	Above Normal
Wave Height	Near: 1-2 ft Off: 2-3 ft	Near: 1-2 ft Off: 2-3 ft	Near: 1-2 ft Off: 2-3 ft	Near: 1-2 ft Off: 2-3 ft	Near: 0-1 ft Off: 1-2 ft	Near: 1-3 ft Off: 4-5 ft	Near: 1-4 ft Off: 5-6 ft
Temperature	Low: 73-76 F	Low: 72-75 F	Low: 74-76 F	Low: 73-76 F	Low: 72-75 F	Low: 72-75 F	Low: 69-73 F
Normal Low: 68-72 F Normal High: 88-90 F	High: 89-93 F	High: 90-93 F	High: 92-94 F	High: 91-93 F	High: 90-92 F	High: 89-90 F	High: 87-89 F

## Color Codes Except for Temperatures

Yellow = Low Threat

Orange = Moderate Threat

Red = High Threat

## Color Codes For Temperatures

Yellow=5 F above normal

Orange=10 F above normal

Red=15 F above normal

Vry Lt Blue=5 F below normal

Lt Blue=10 F below normal

Blue=15 F below normal



- Dry and warm weather continues through Saturday.
- A more seasonal pattern of scattered showers and thunderstorms starts Sunday into next week.
- Due to releases from the north, moderate flooding is expected on parts of the Sabine and Neches Rivers.
- In the tropics, no development is expected through Monday, but all eyes will be on the Bay of Campeche later next week to see if anything forms from the thunderstorms in the region.

