



Weekly Weather Update

2:30 PM CDT
Thursday, July 14, 2022

Stacey Denson, *NWS Lake Charles*



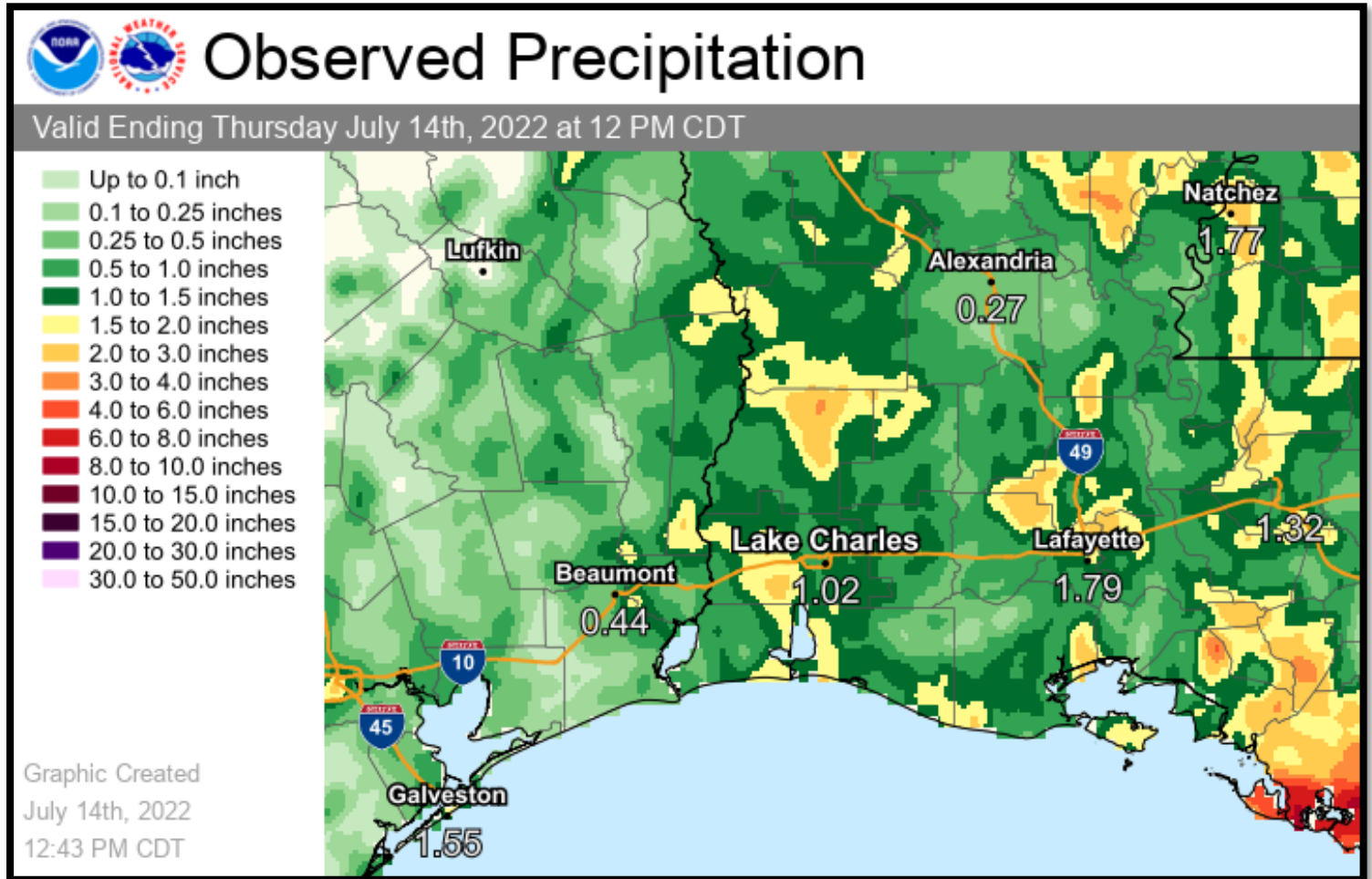


TOP STORY:

The best chance for convection will be tomorrow, with chances tapering down over the weekend. A very typical summertime pattern will continue through much of the period.

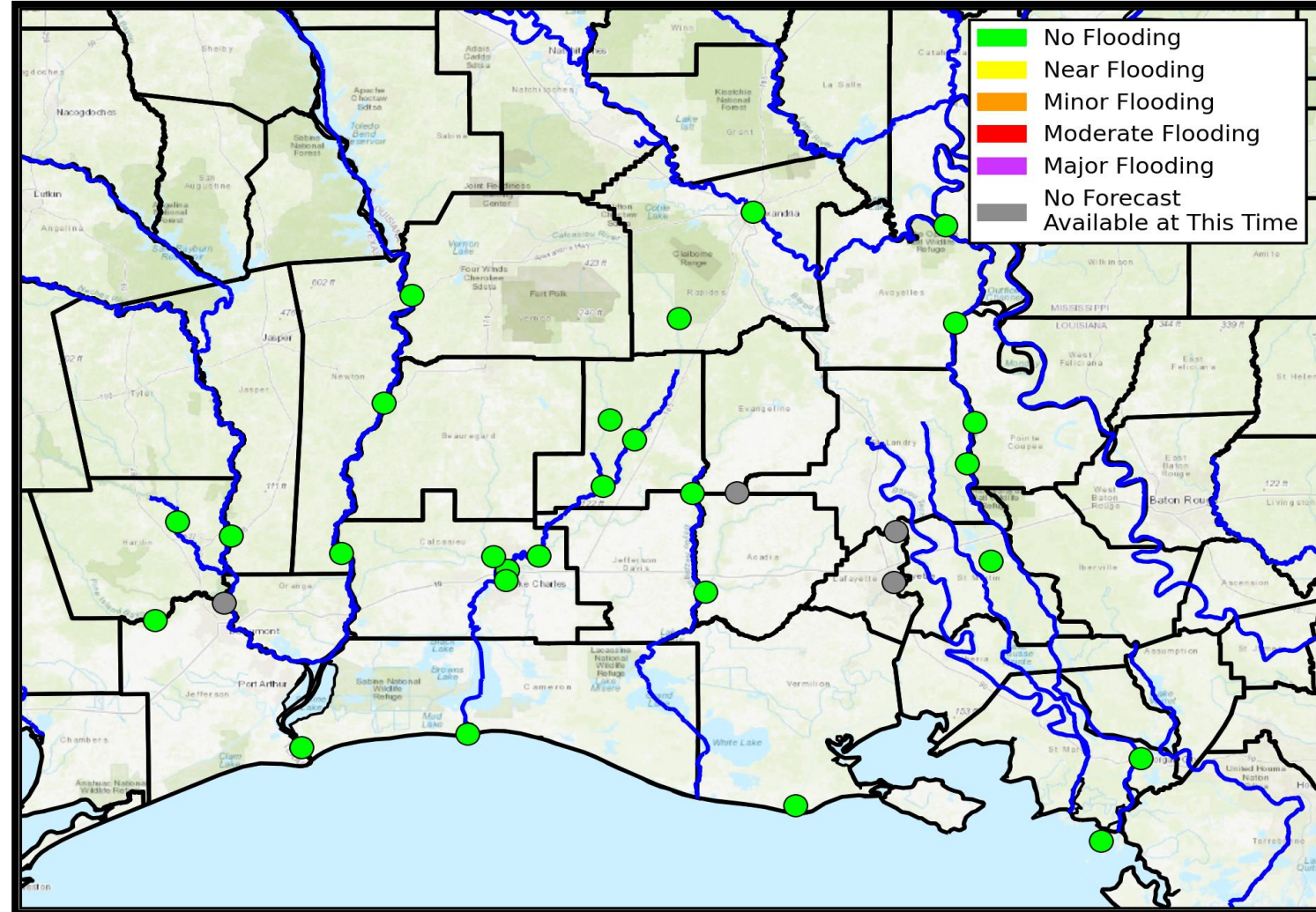
	Low Temperatures	High Temperatures	Chance For Rain
Friday	72-75 F	89-93 F	25-65%
Saturday	72-74 F	91-95 F	15-40%
Sunday	73-75 F	91-95 F	15-45%
Monday	75-77 F	90-94 F	25-55%
Tuesday	75-77 F	91-95 F	15-35%
Wednesday	76-78 F	92-98 F	15-30%
Thursday	76-78 F	94-99 F	20-35%
Normals This Time of Year	70-74 F	90-93 F	35%-50%

A weak boundary which moved into the region this past weekend brought scattered showers and thunderstorms. Most locations saw around .50-1.50 inches of rain over the last week.





No flooding is ongoing or expected in any of our river basins over the next week.

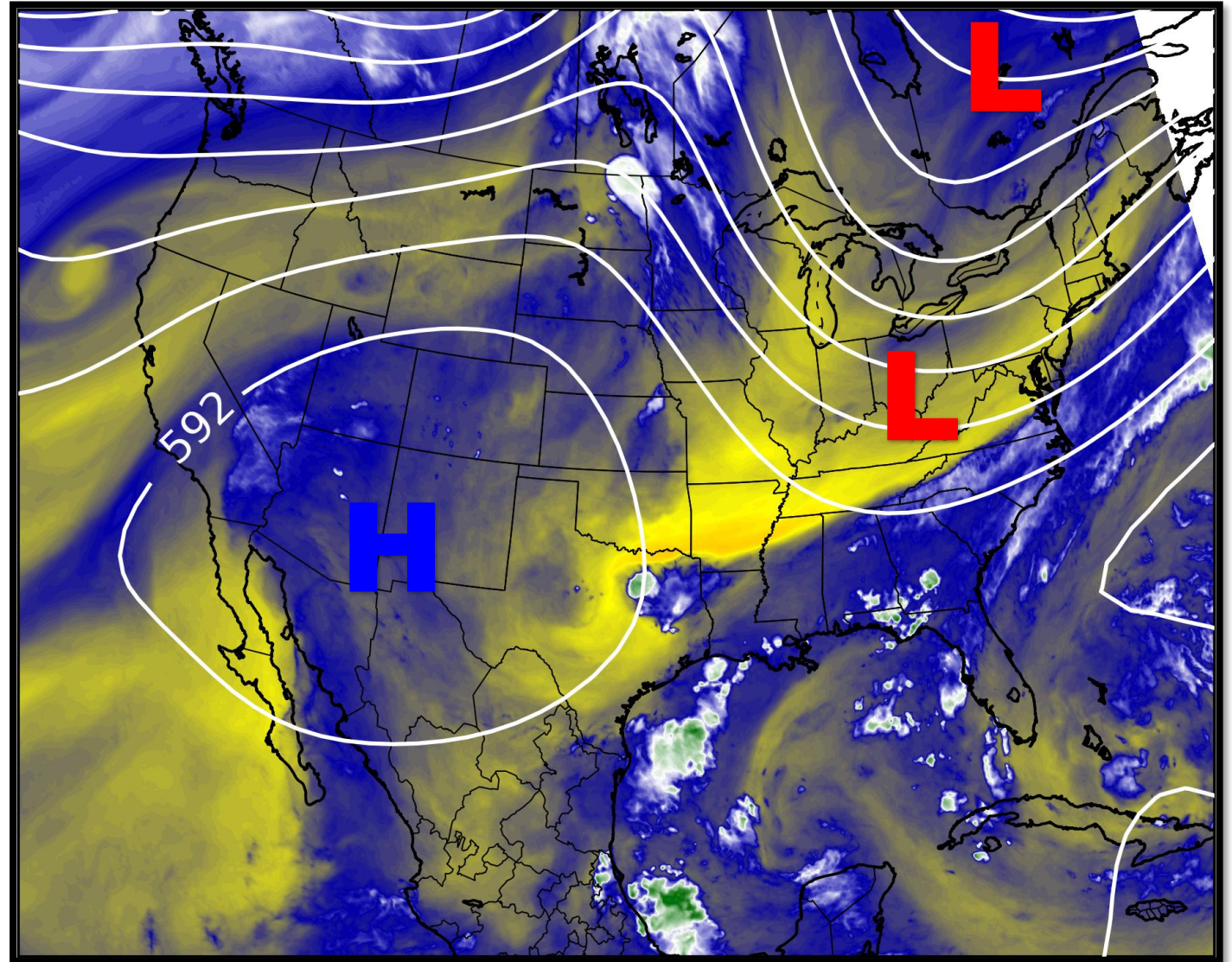


Upper Level Steering Patterns



Lake Charles
WEATHER FORECAST OFFICE

A large upper level high is located over the desert SW. A trough of low pressure is located over the Great Lakes/New England.

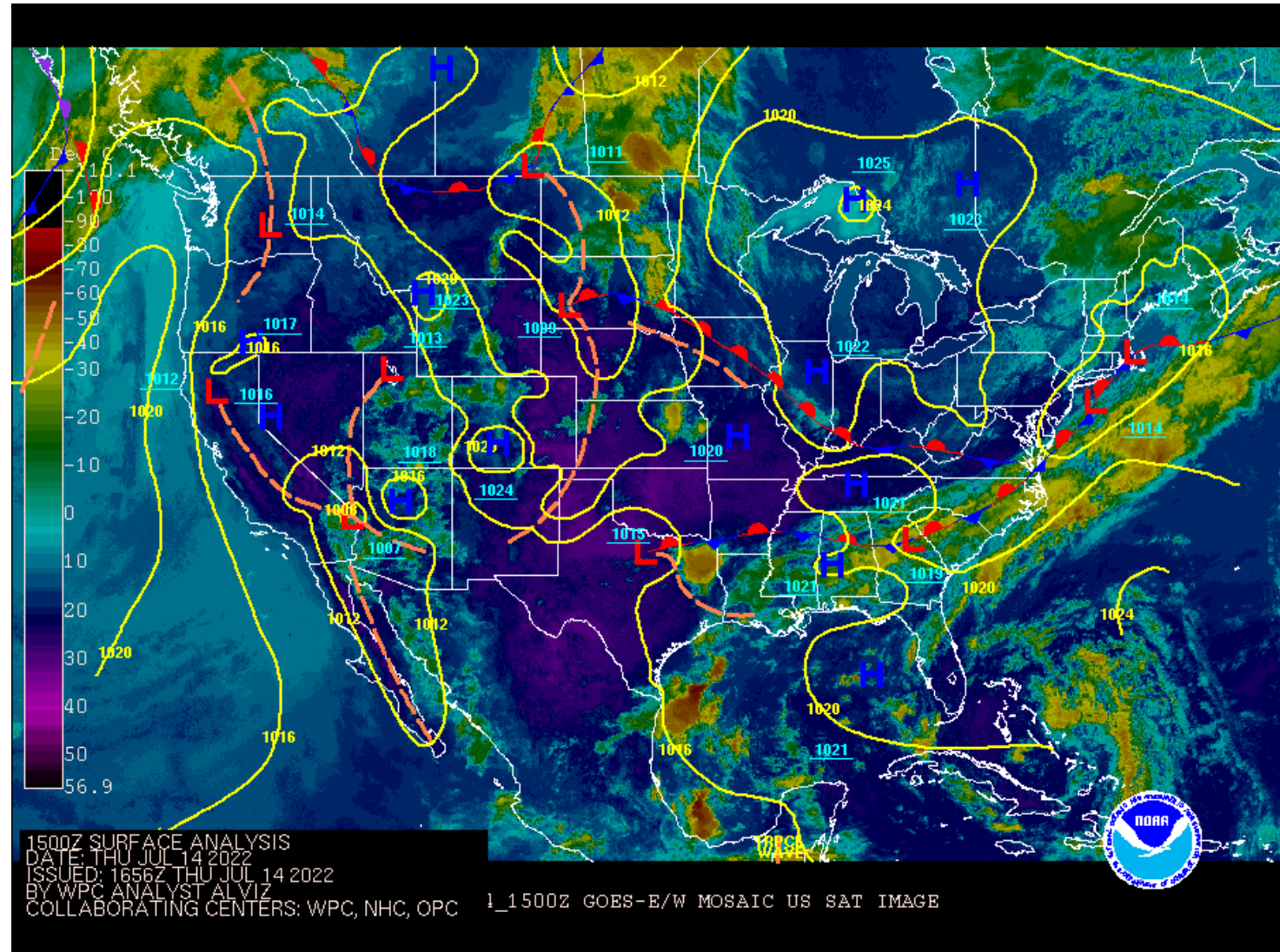


Surface Weather Map with Fronts



Lake Charles
WEATHER FORECAST OFFICE

A stationary front is situated from the Ark-La-Tex to the New England Coast. Weak high pressure is over the Gulf of Mexico.

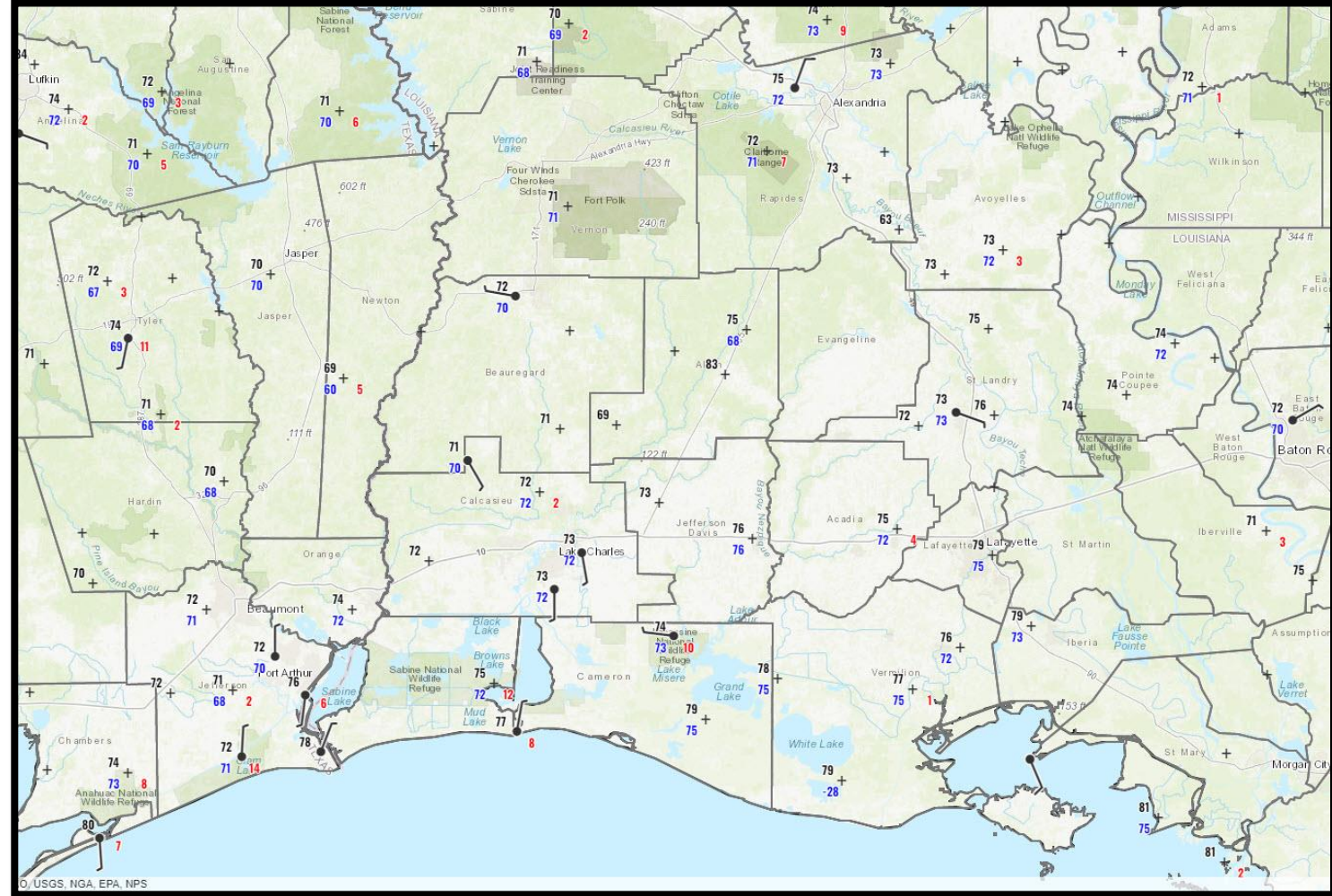


6 am Weather Observations



Lake Charles
WEATHER FORECAST OFFICE

At 6AM temperatures were in the mid to upper 70s. Skies were partly cloudy and it was very humid.

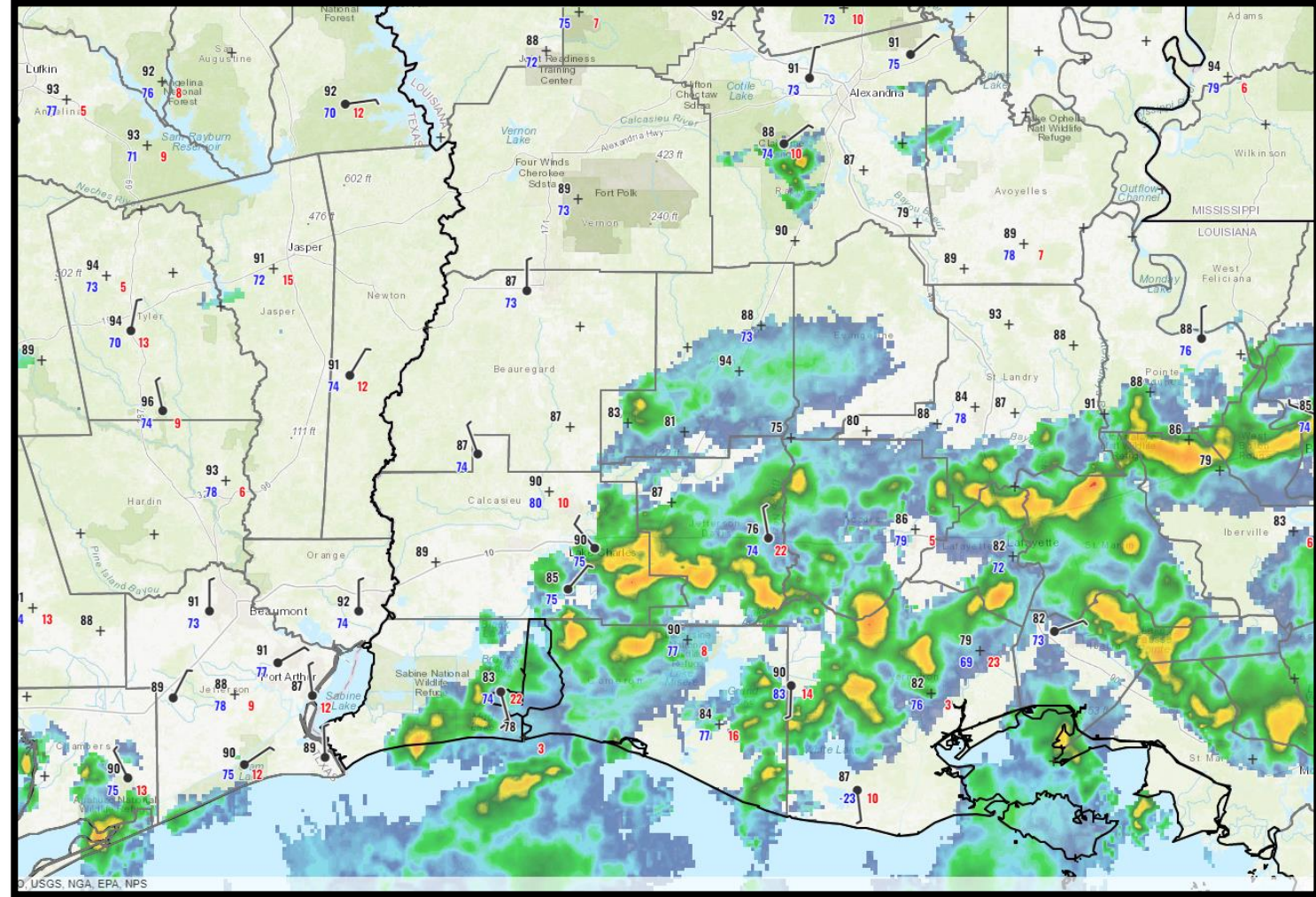


2 pm Weather Observations



Lake Charles
WEATHER FORECAST OFFICE

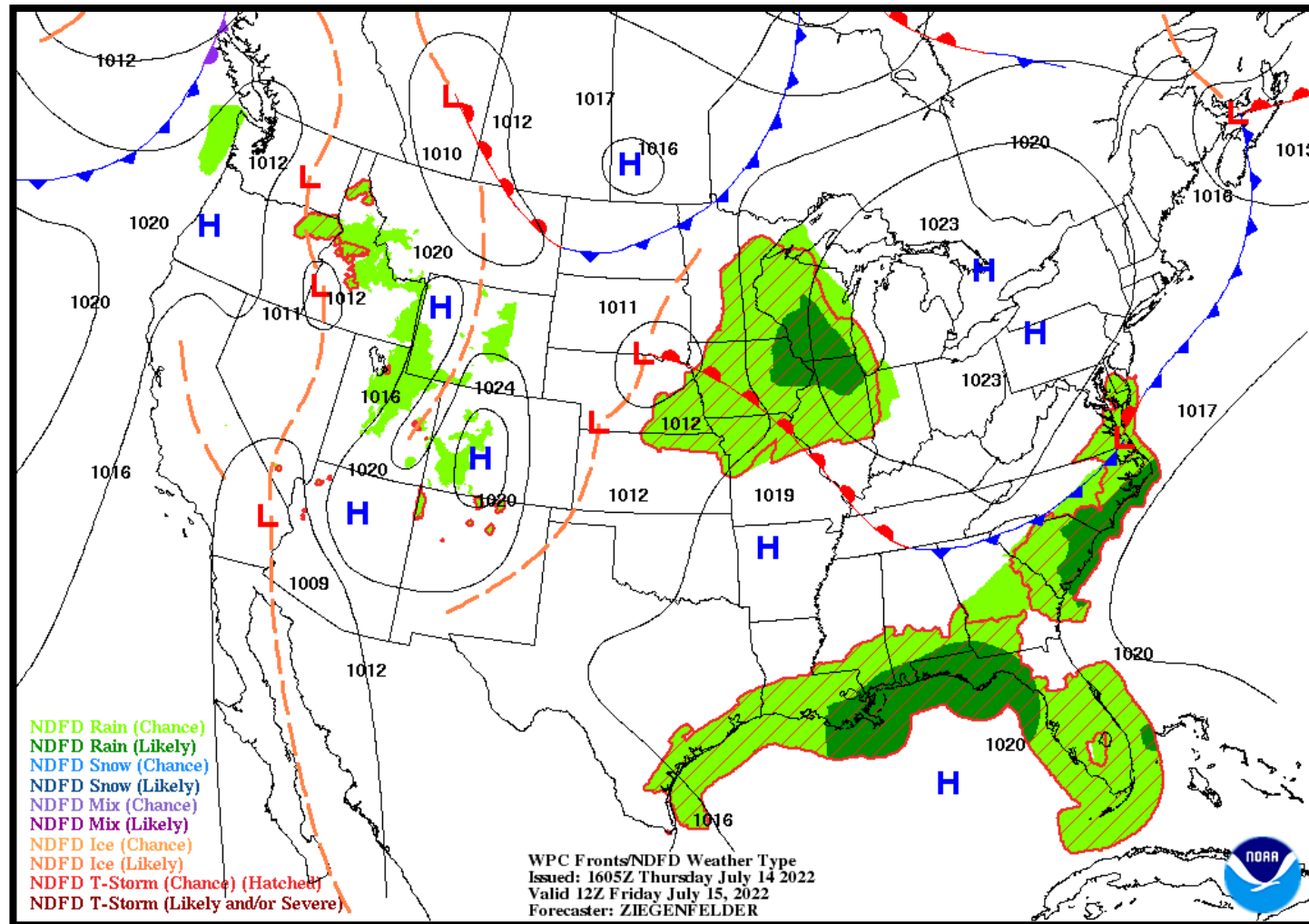
Scattered to numerous showers and thunderstorms are ongoing across the region. Cloud cover and convection is holding temperatures in the mid 80s to low 90s at most locations.





NWS LCH REGIONAL WEATHER

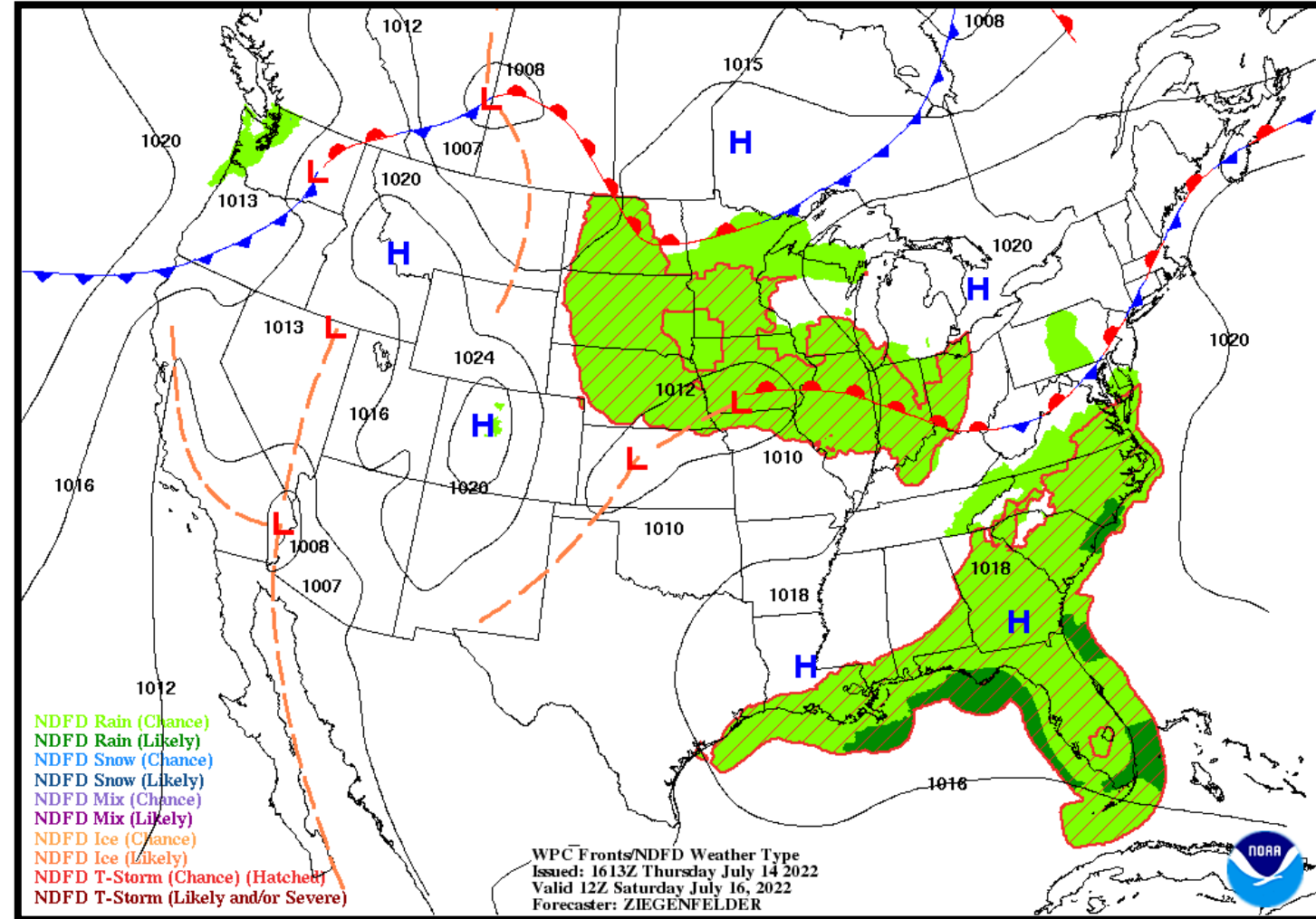
Low Temperature	72-75 F
High Temperature	89-93 F
Wind	SE 5 mph
Rain Chances	25-65%
Weather Hazards	Thunderstorms





NWS LCH REGIONAL WEATHER

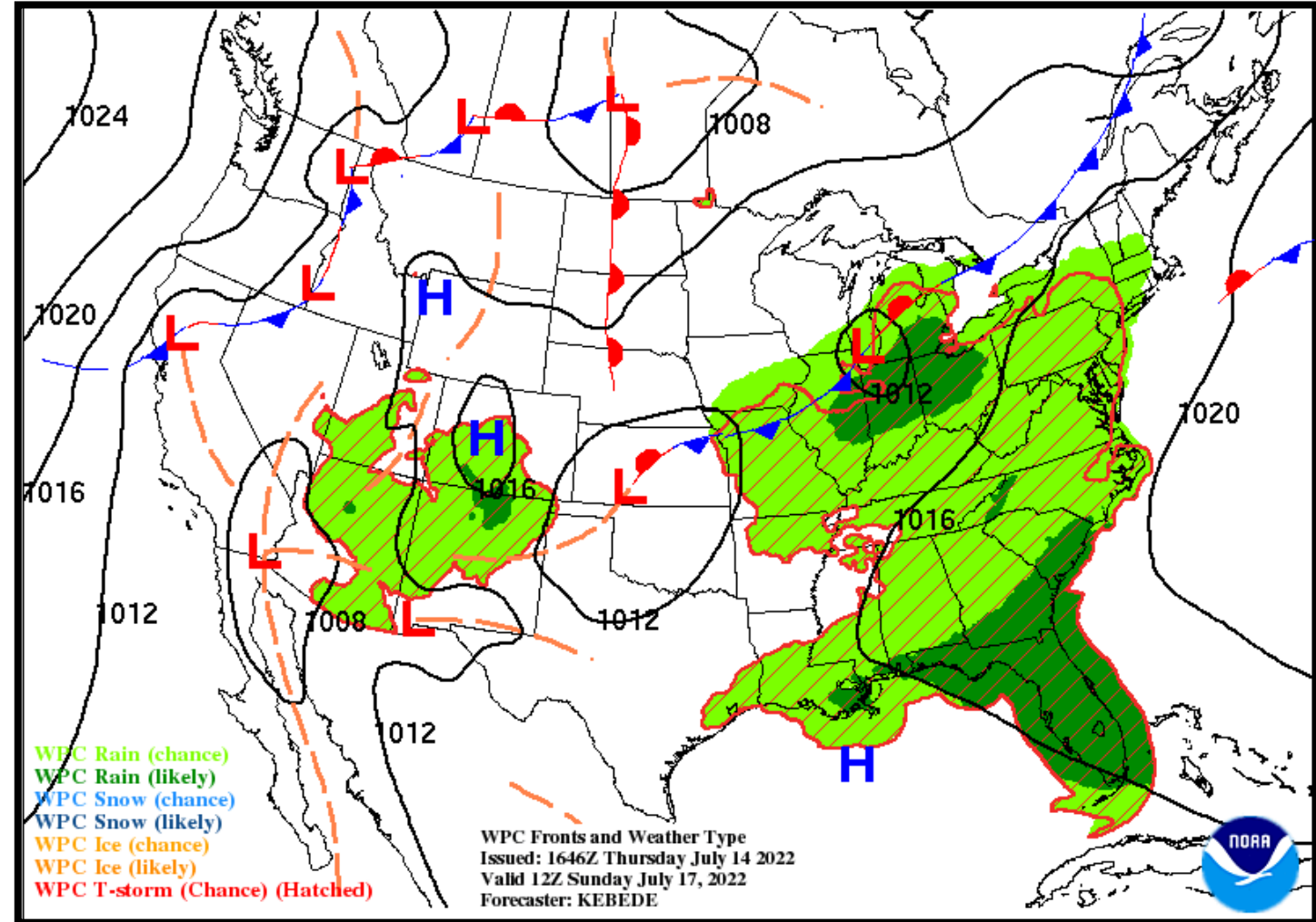
Low Temperature	72-74 F
High Temperature	91-95 F
Wind	S 5 mph
Rain Chances	15-40%
Weather Hazards	Thunderstorms





NWS LCH REGIONAL WEATHER

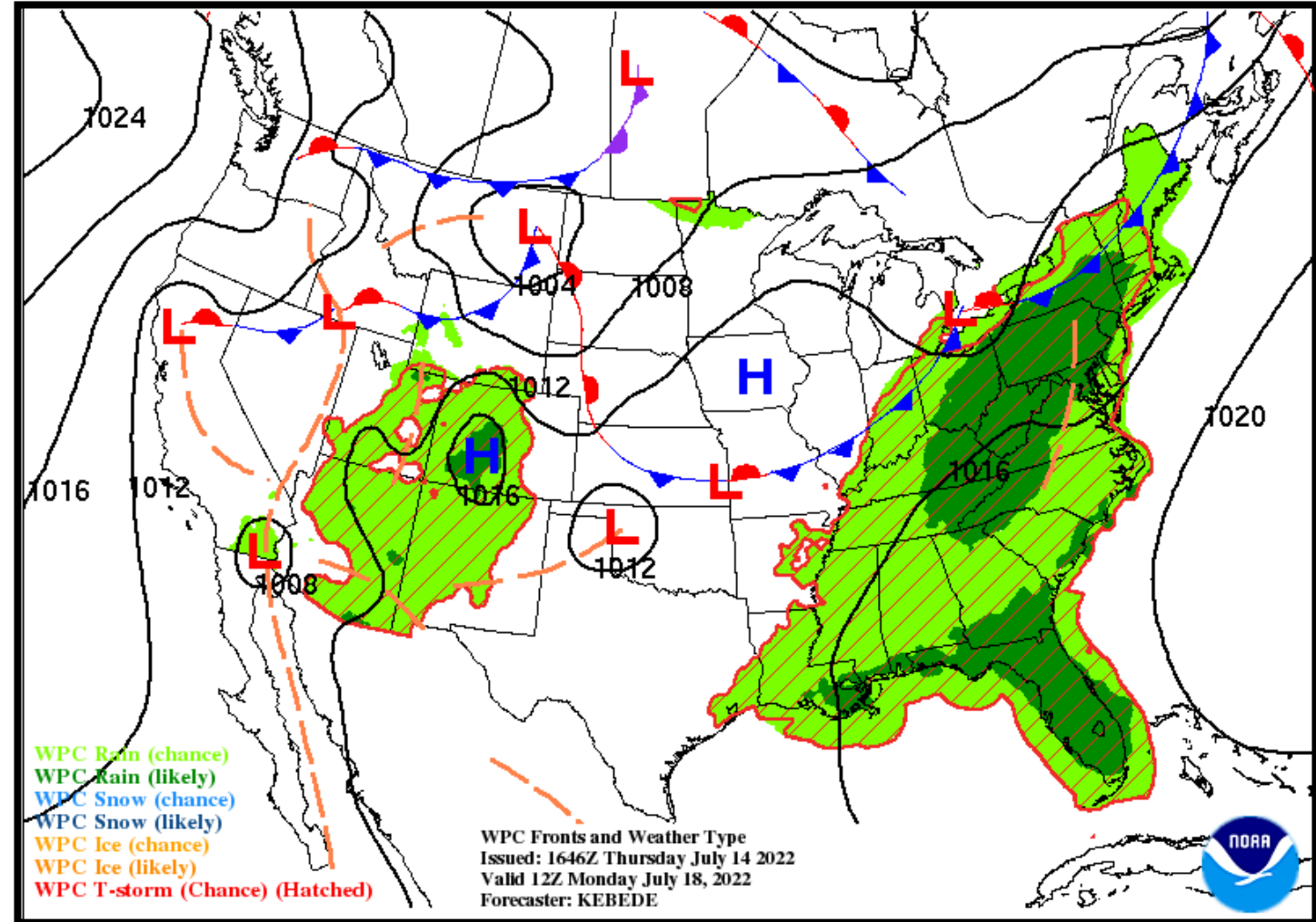
Low Temperature	73-75 F
High Temperature	91-95 F
Wind	S 5 mph
Rain Chances	15-45%
Weather Hazards	Thunderstorms





NWS LCH REGIONAL WEATHER

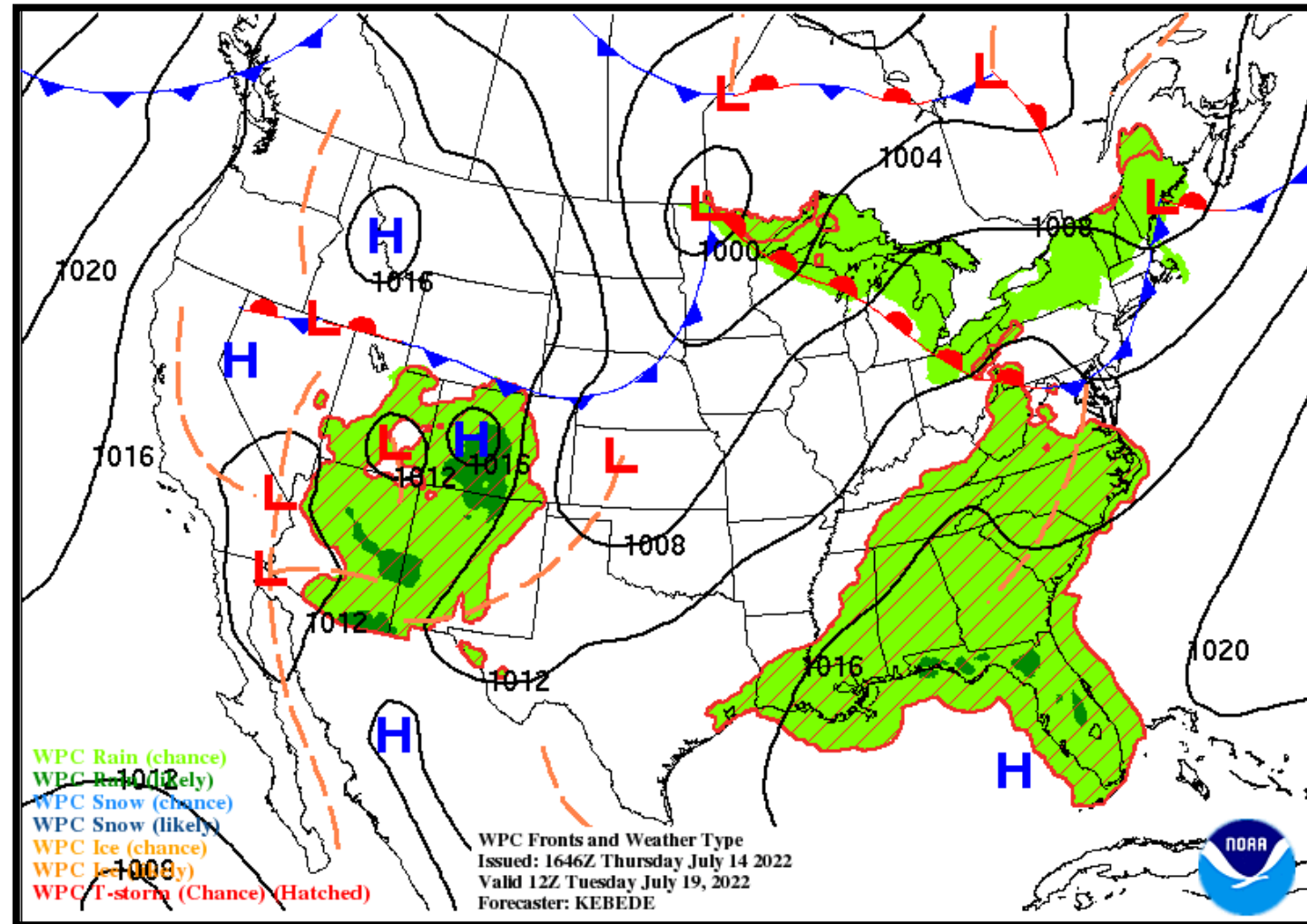
Low Temperature	75-77 F
High Temperature	90-94 F
Wind	SSW 5-10 mph
Rain Chances	25-55%
Weather Hazards	Thunderstorms





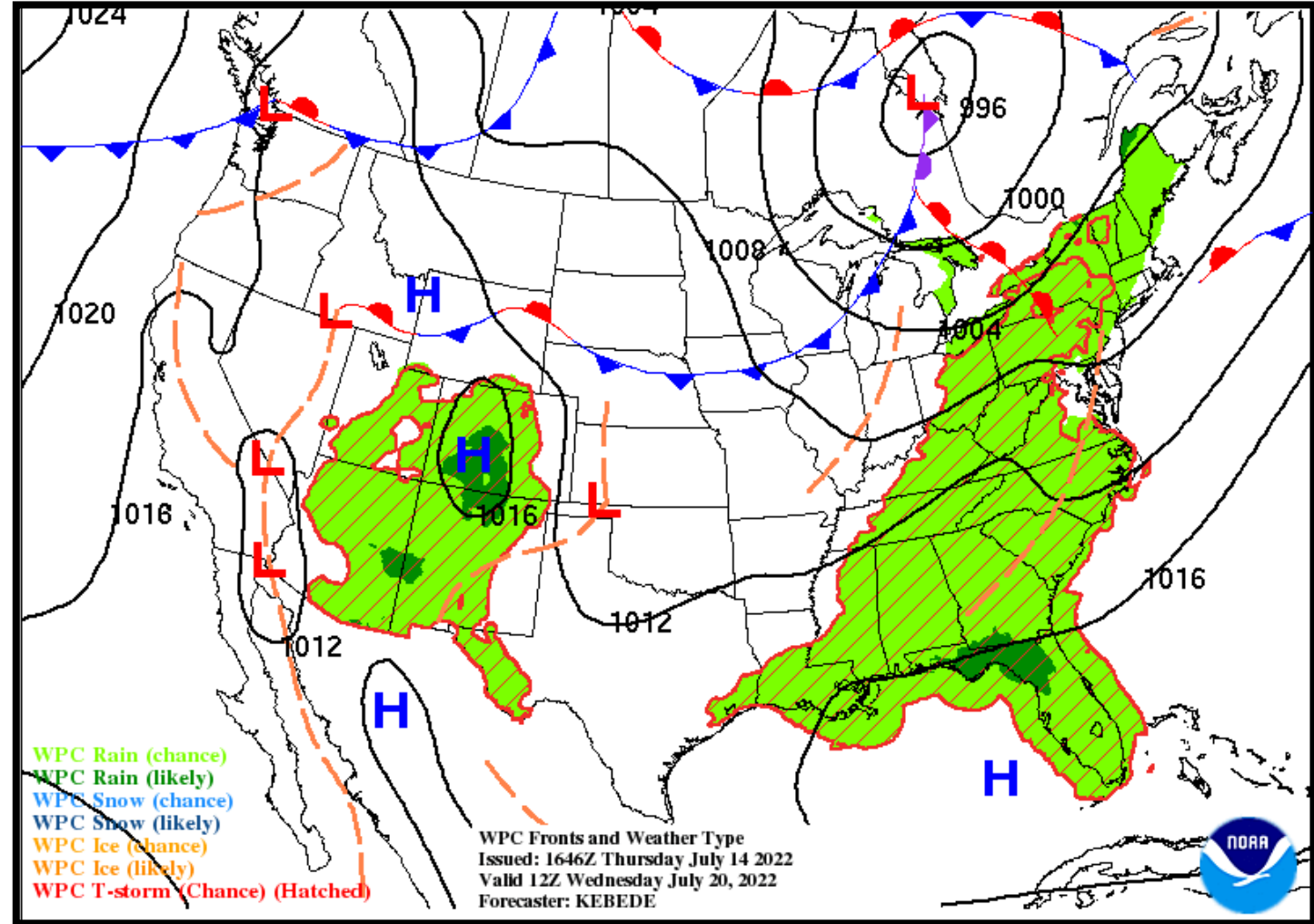
NWS LCH REGIONAL WEATHER

Low Temperature	75-77 F
High Temperature	91-95 F
Wind	SSW 10 mph
Rain Chances	15-35%
Weather Hazards	Thunderstorms



NWS LCH REGIONAL WEATHER

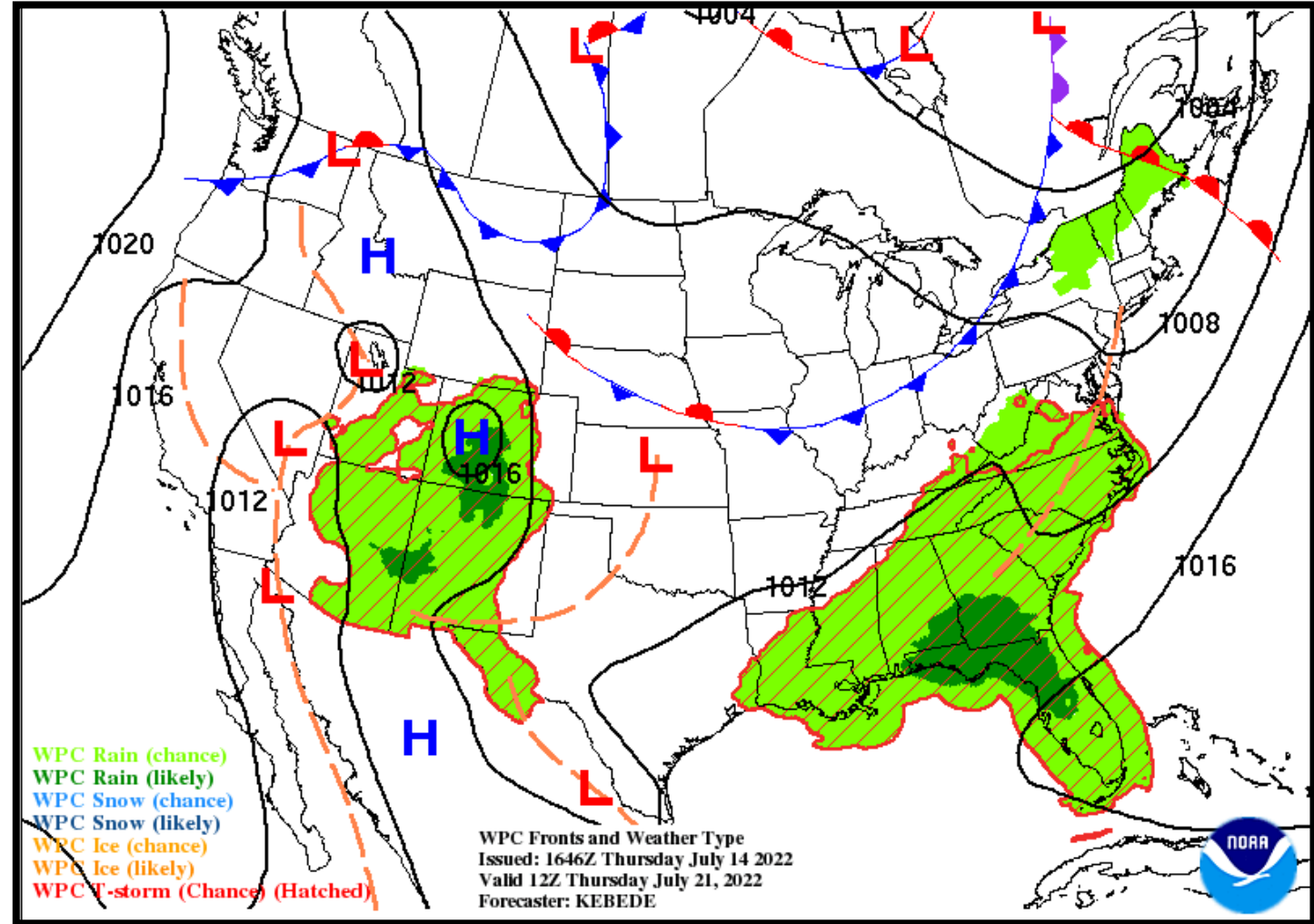
Low Temperature	76-78 F
High Temperature	92-98 F
Wind	SW 10 mph
Rain Chances	15-30%
Weather Hazards	Thunderstorms





NWS LCH REGIONAL WEATHER

Low Temperature	76-78 F
High Temperature	94-99 F
Wind	SW 5-10 mph
Rain Chances	20-35%
Weather Hazards	Thunderstorms



Weekly Weather Summary Table



Lake Charles
WEATHER FORECAST OFFICE

Color Codes Except for Temperatures	Weather	Friday 07/15/22	Saturday 07/16/22	Sunday 07/17/22	Monday 07/18/22	Tuesday 07/19/22	Wednesday 07/20/22	Thursday 07/21/22
Yellow = Low Threat	Rain Total	0.10-0.50"	<0.10"	<0.10"	0.10-0.25"	<0.10"	<0.10"	<0.10"
Orange = Moderate Threat	T-Storm/ Lightning	Scattered	Isolated	Isolated	Scattered	Isolated	Isolated	Isolated
Red = High Threat	Tornado/Hail/ Dmg Wind	None	None	None	None	None	None	None
	Wind	SE 5 mph	S 5 mph	S 5 mph	SSW 5-10 mph	SSW 10 mph	SW 10 mph	SW 5-10 mph
	Tides	Above Normal	Above Normal	Above Normal	Above Normal	Near Normal	Near Normal	Near Normal
	Wave Height	Near: 1-2 ft Off: 2-3 ft	Near: 1-2 ft Off: 2-3 ft	Near: 1-2 ft Off: 2-3 ft	Near: 1-2 ft Off: 2-3 ft	Near: 1-2 ft Off: 2-3 ft	Near: 1-3 ft Off: 3-4 ft	Near: 1-3 ft Off: 3-4 ft
	Temperature	Low: 72-75 F	Low: 72-74 F	Low: 73-75 F	Low: 75-77 F	Low: 75-77 F	Low: 76-78 F	Low: 76-78 F
	Normal Low: 70-74 F Normal High: 90-93 F	High: 89-93 F	High: 91-95 F	High: 91-95 F	High: 90-94 F	High: 91-95 F	High: 92-98 F	High: 94-99 F

Color Codes For Temperatures
Yellow=5 F above normal
Orange=10 F above normal
Red=15 F above normal
Vry Lt Blue=5 F below normal
Lt Blue=10 F below normal
Blue=15 F below normal



- An upper level ridging expanding eastward across the region will reduce rain chances over the weekend, while also increasing afternoon highs.
- Slightly better rain chances return on Monday, with a daily chance of showers and thunderstorms expected through the end of the period.
- Acadiana will see the highest chance of rain each day, while SE TX will see the lowest.

