



# Weekly Weather Update

2:30 PM CDT  
Thursday, August 4, 2022

Kent Kuyper, *NWS Lake Charles*





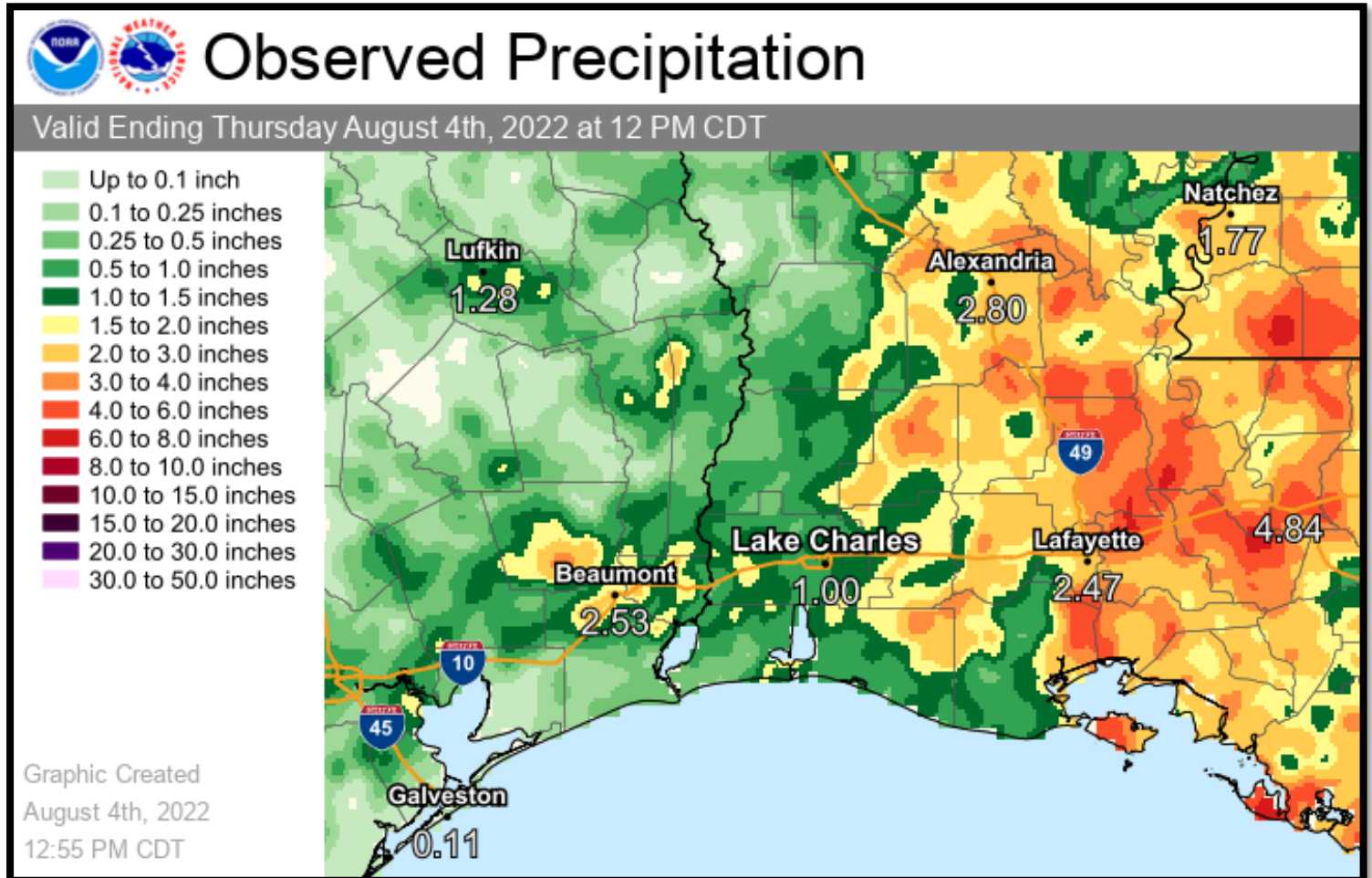
## TOP STORY:

**An upper level disturbance to the east is moving slowly to the west. Storms will spread into southwest Louisiana and southeast Texas on Friday and into the weekend. Slight chance for flooding as slow moving storms will produce heavy rainfall.**

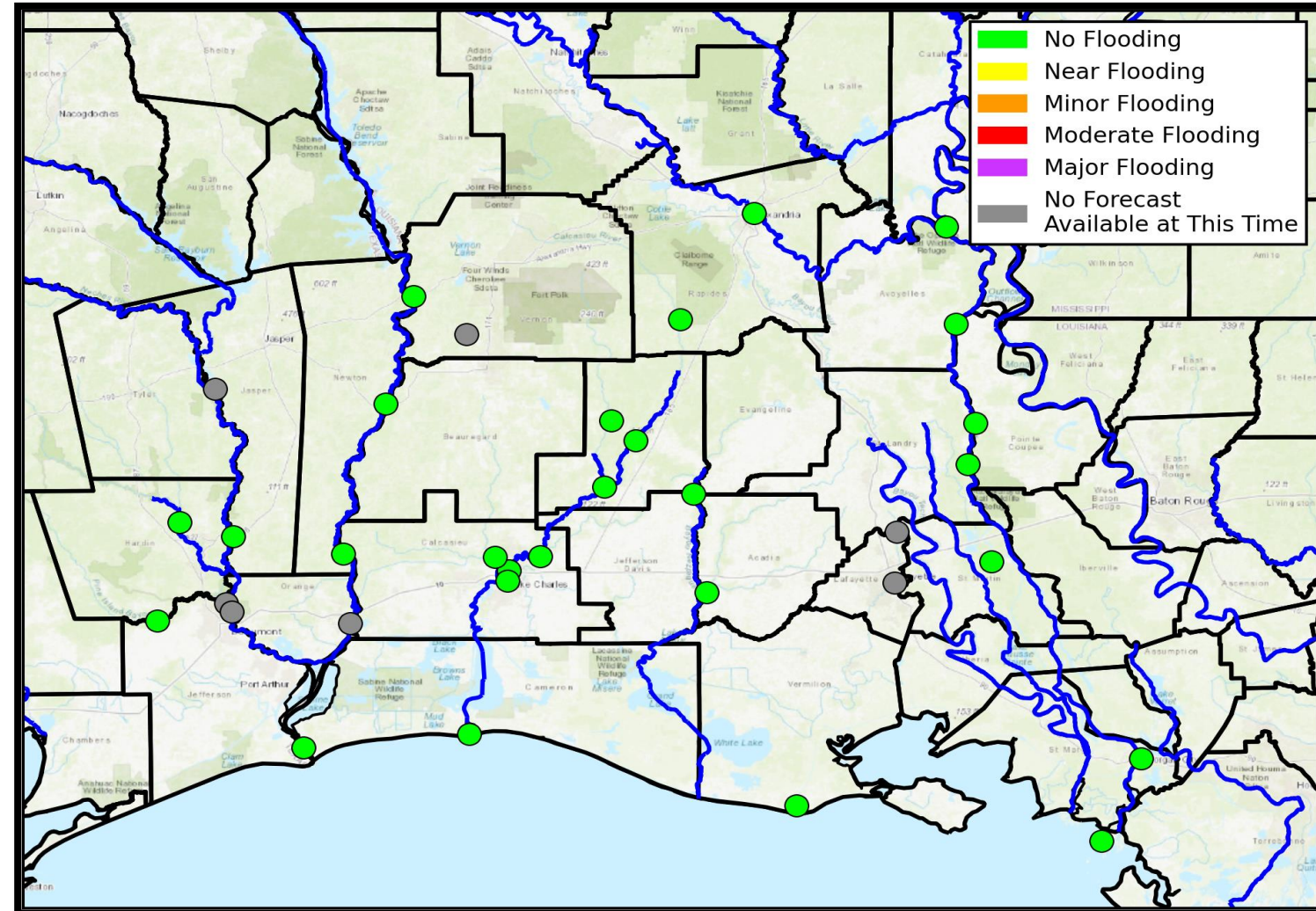
	Low Temperatures	High Temperatures	Chance For Rain
Friday	73-76 F	87-90 F	65-80%
Saturday	72-76 F	89-92 F	35-70%
Sunday	72-75 F	89-92 F	40-75%
Monday	72-75 F	89-93 F	40-60%
Tuesday	72-75 F	89-93 F	40-60%
Wednesday	72-74 F	89-91 F	45-60%
Thursday	71-75 F	90-92 F	40-60%
Normals This Time of Year	70-74 F	90-93 F	30%-45%

Rainfall over the past week has been the heaviest in south central Louisiana with mainly two to five inches with isolated amounts a bit higher.

Lesser amounts were reported in southeast Texas and southwest Louisiana.



There is no river flooding at this time but rains will see bayous and rivers increase in height from storm activity.

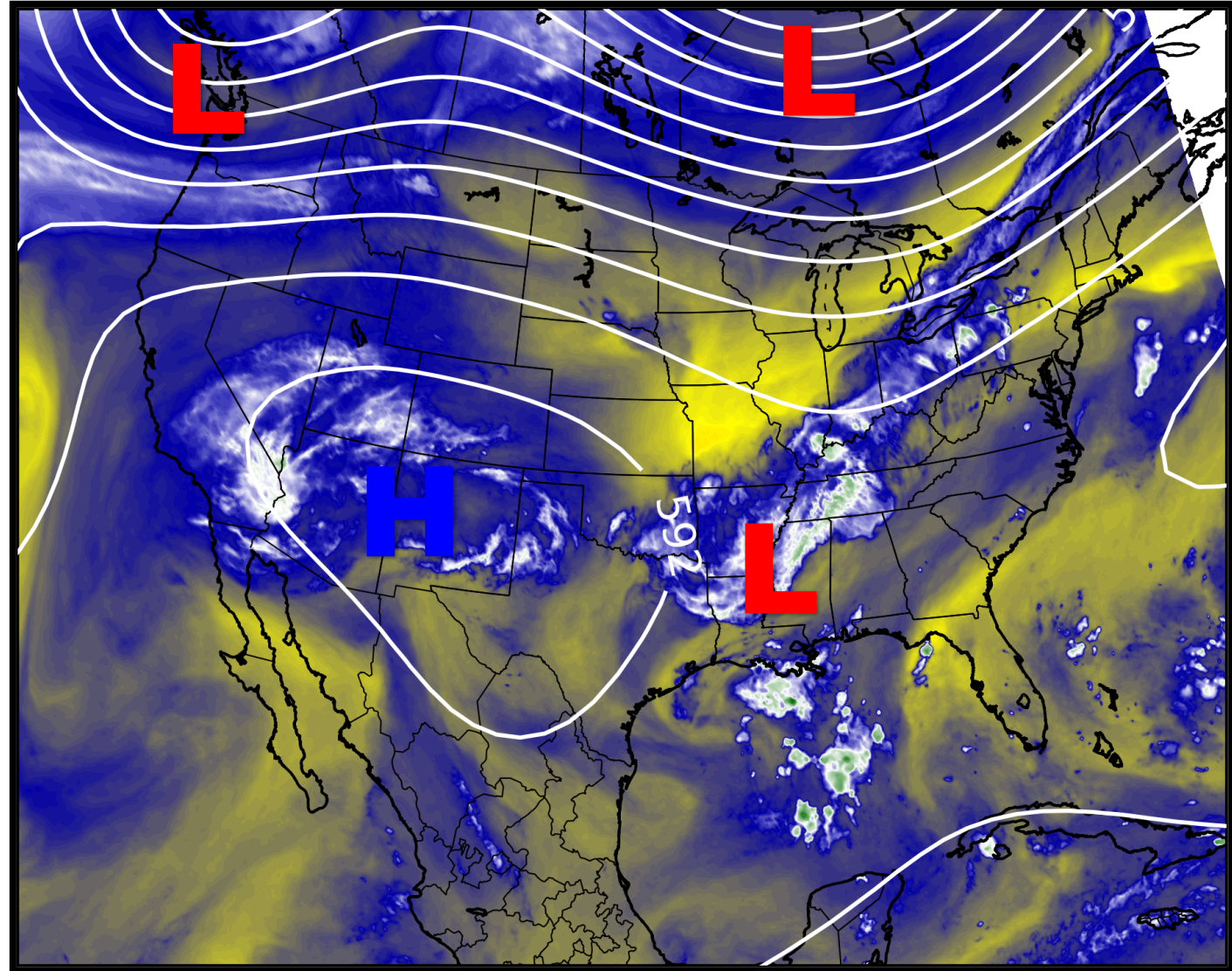


# Upper Level Steering Patterns



Lake Charles  
WEATHER FORECAST OFFICE

Upper level ridge in the desert southwest US will extend into Texas. Systems will move over the top and down into southern Louisiana and southeast Texas.

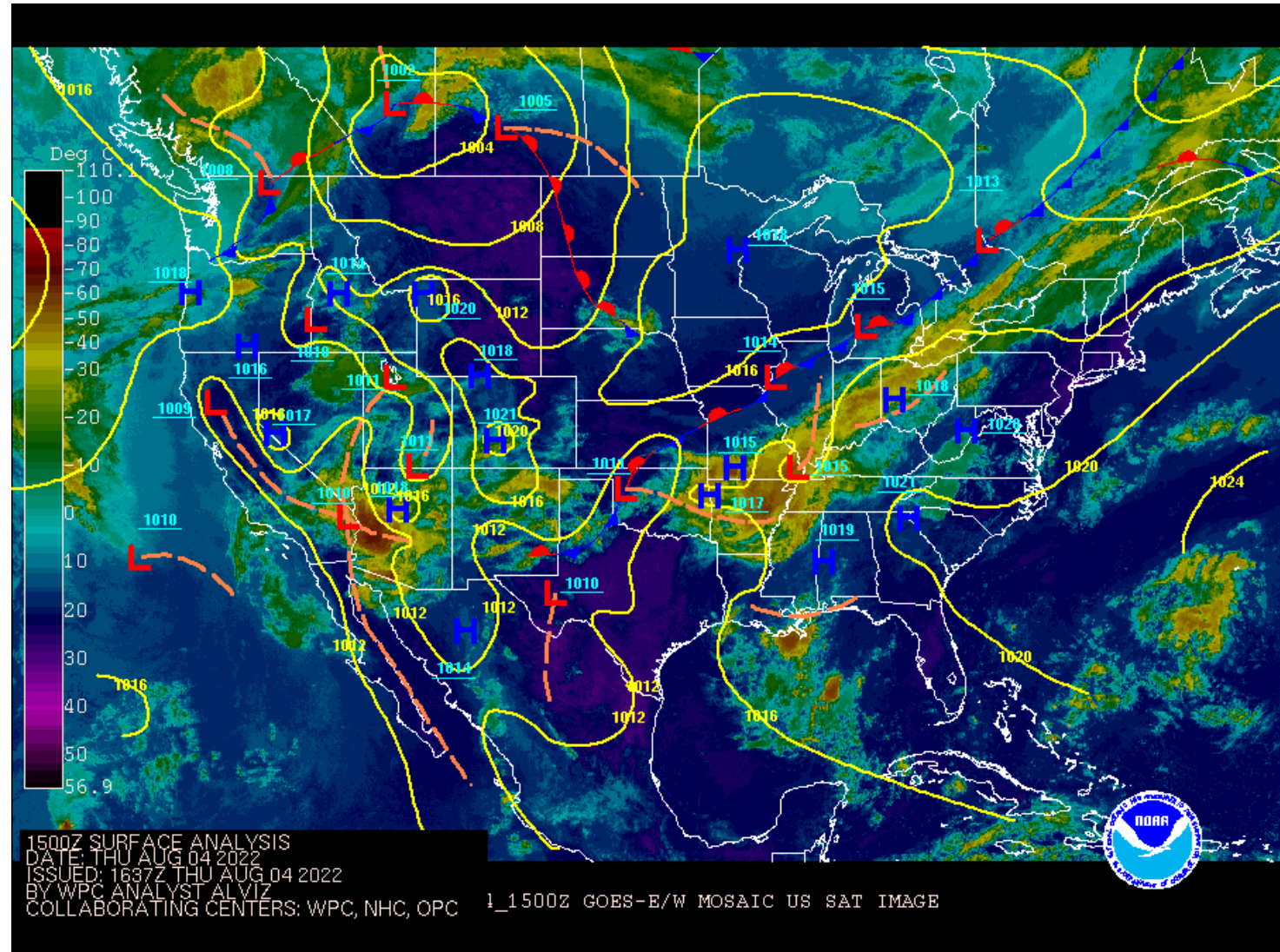


# Surface Weather Map with Fronts



Lake Charles  
WEATHER FORECAST OFFICE

A coastal trof with deep moisture extends from south-central Louisiana into the Florida panhandle as another trof over Oklahoma is projected to move south.

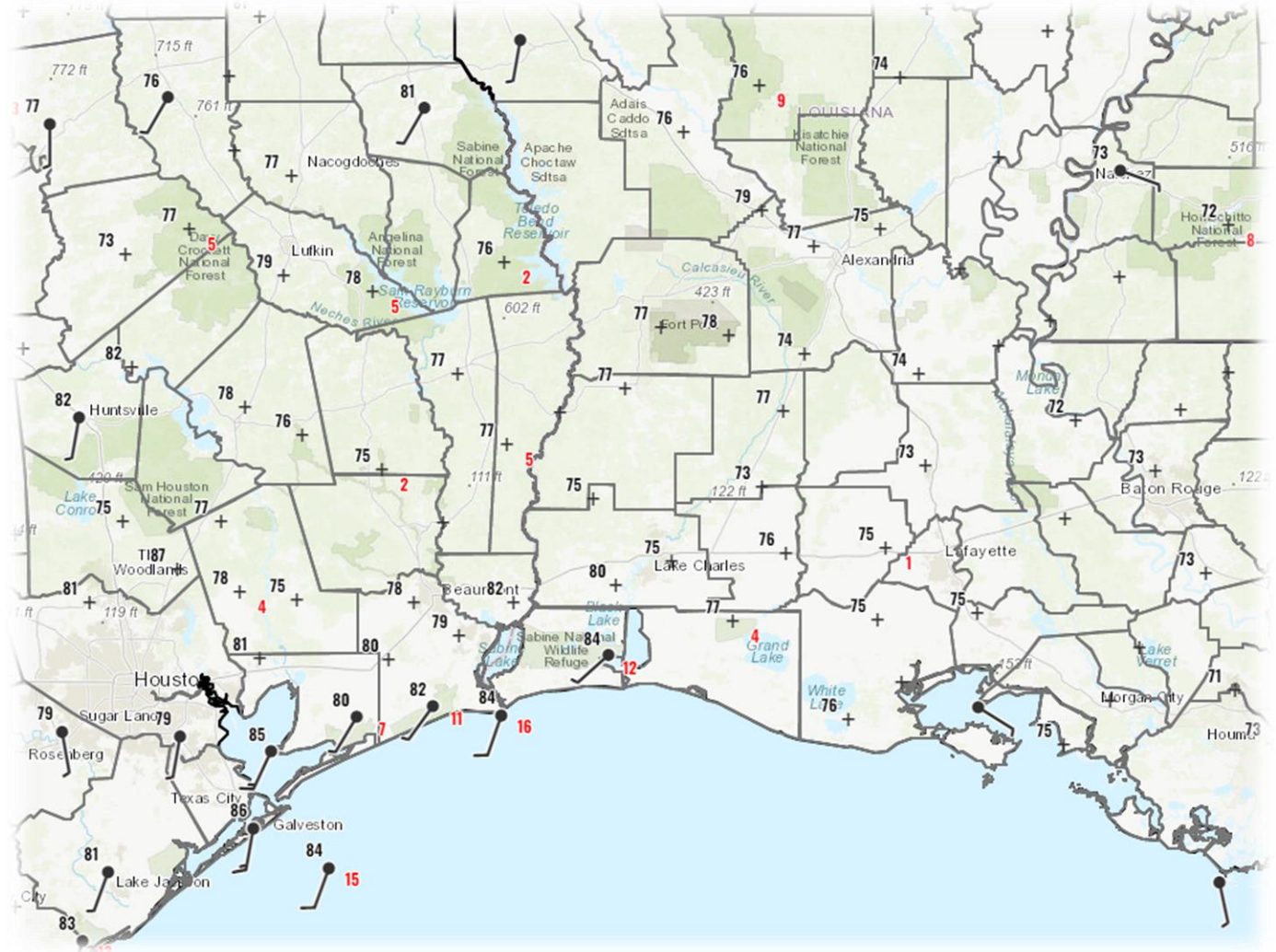


# 6 am Weather Observations



Lake Charles  
WEATHER FORECAST OFFICE

Isolated showers were noted on radar in south central Louisiana. Temperatures were in the 70s as winds were light and variable.

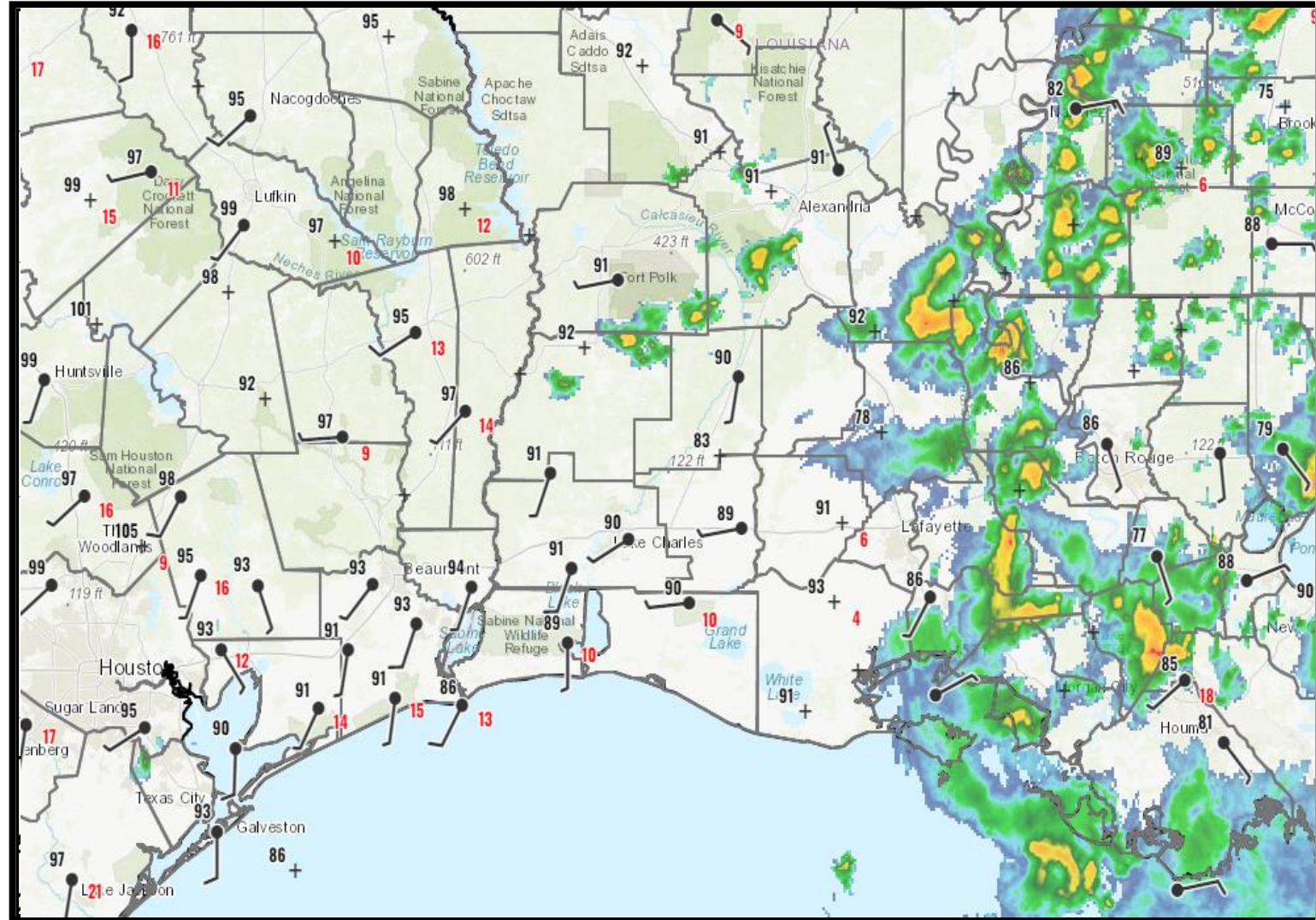


# 2 pm Weather Observations



Lake Charles  
WEATHER FORECAST OFFICE

Scattered showers and isolated thunderstorms in south-central Louisiana this afternoon. Temperatures are in the 80s in rain cooled areas with mid to upper 90s across sunny southeast Texas.

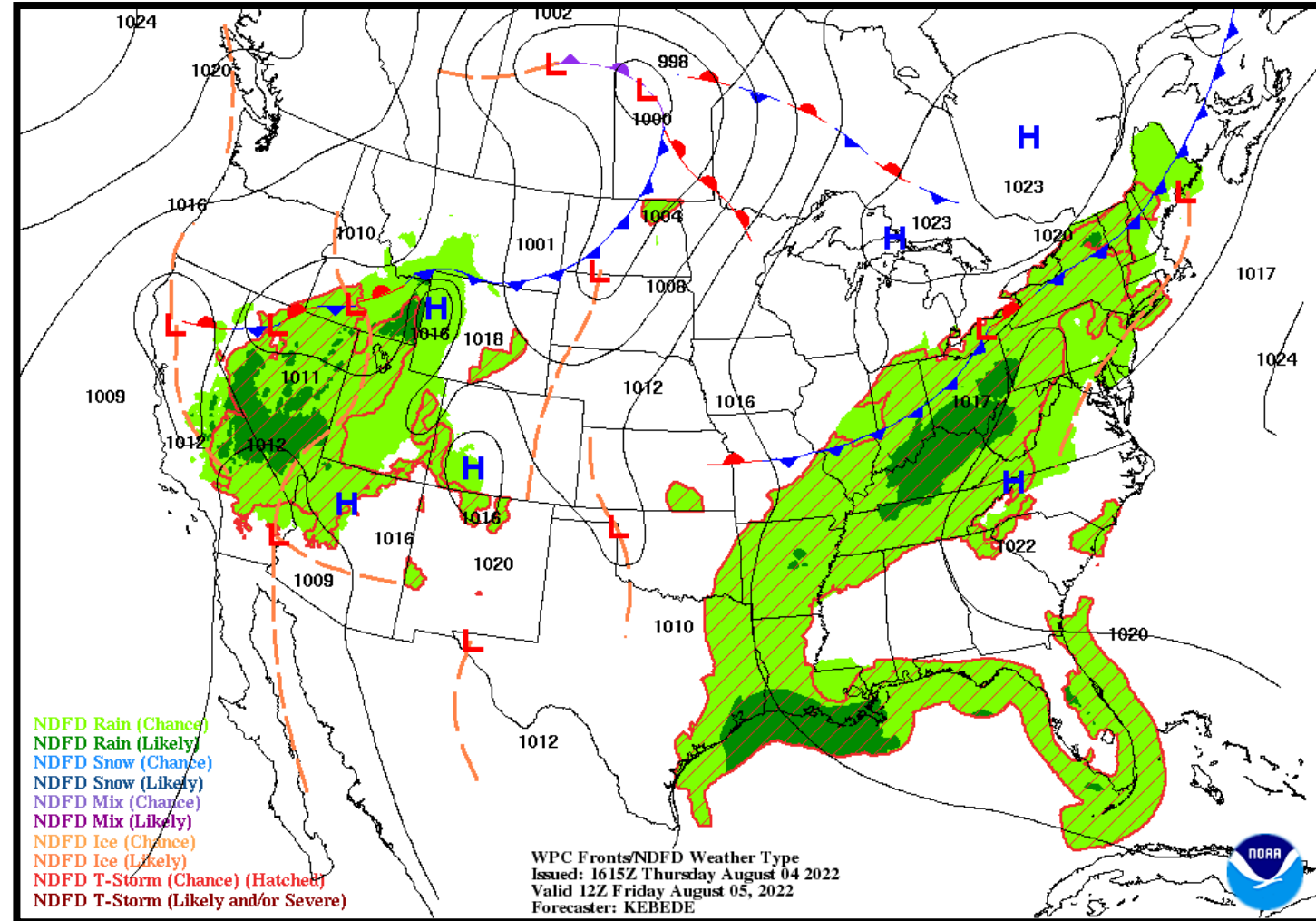






### NWS LCH REGIONAL WEATHER

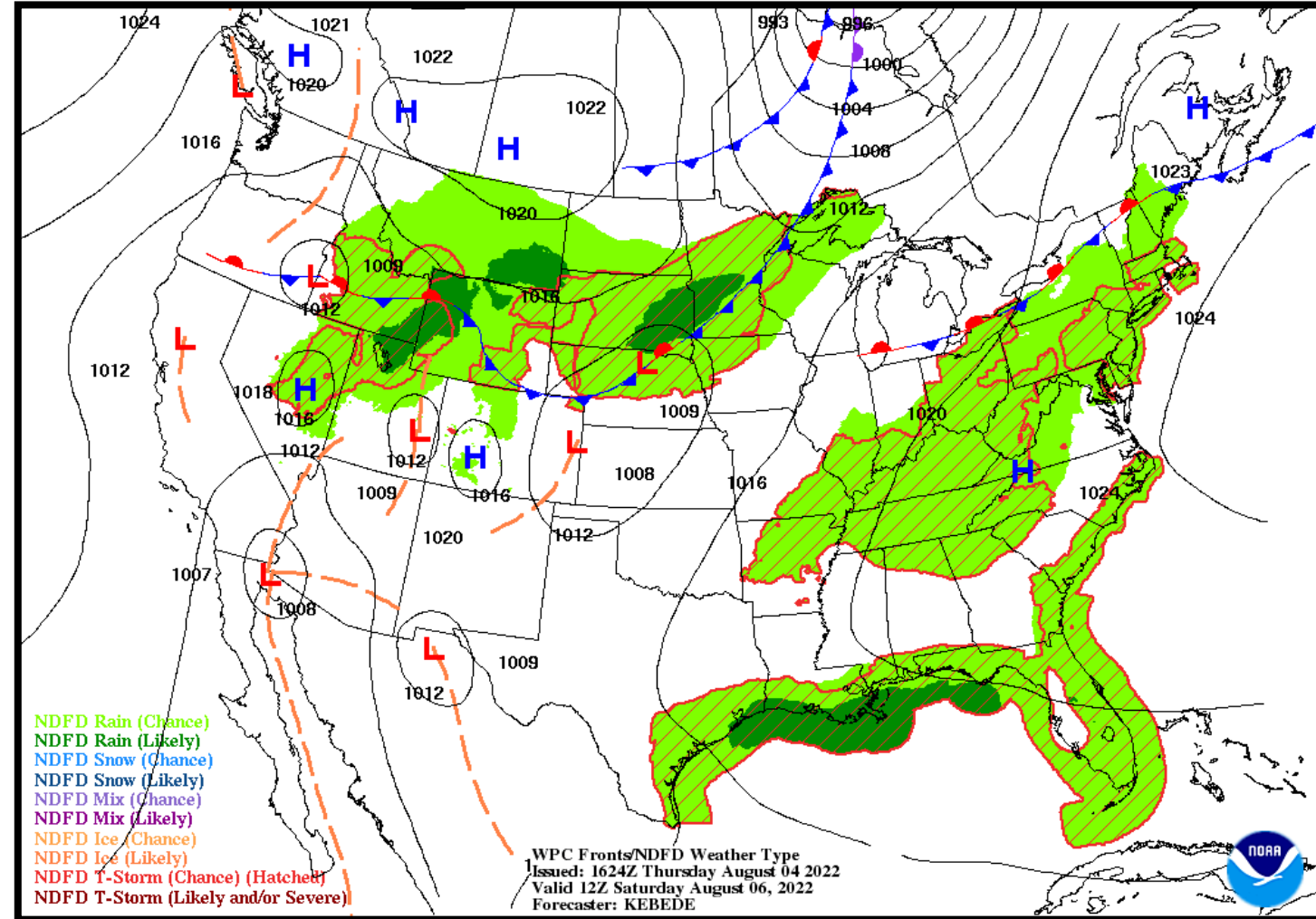
Low Temperature	73-76 F
High Temperature	87-90 F
Wind	SE 5-10 mph
Rain Chances	65-80%
Weather Hazards	Thunderstorms





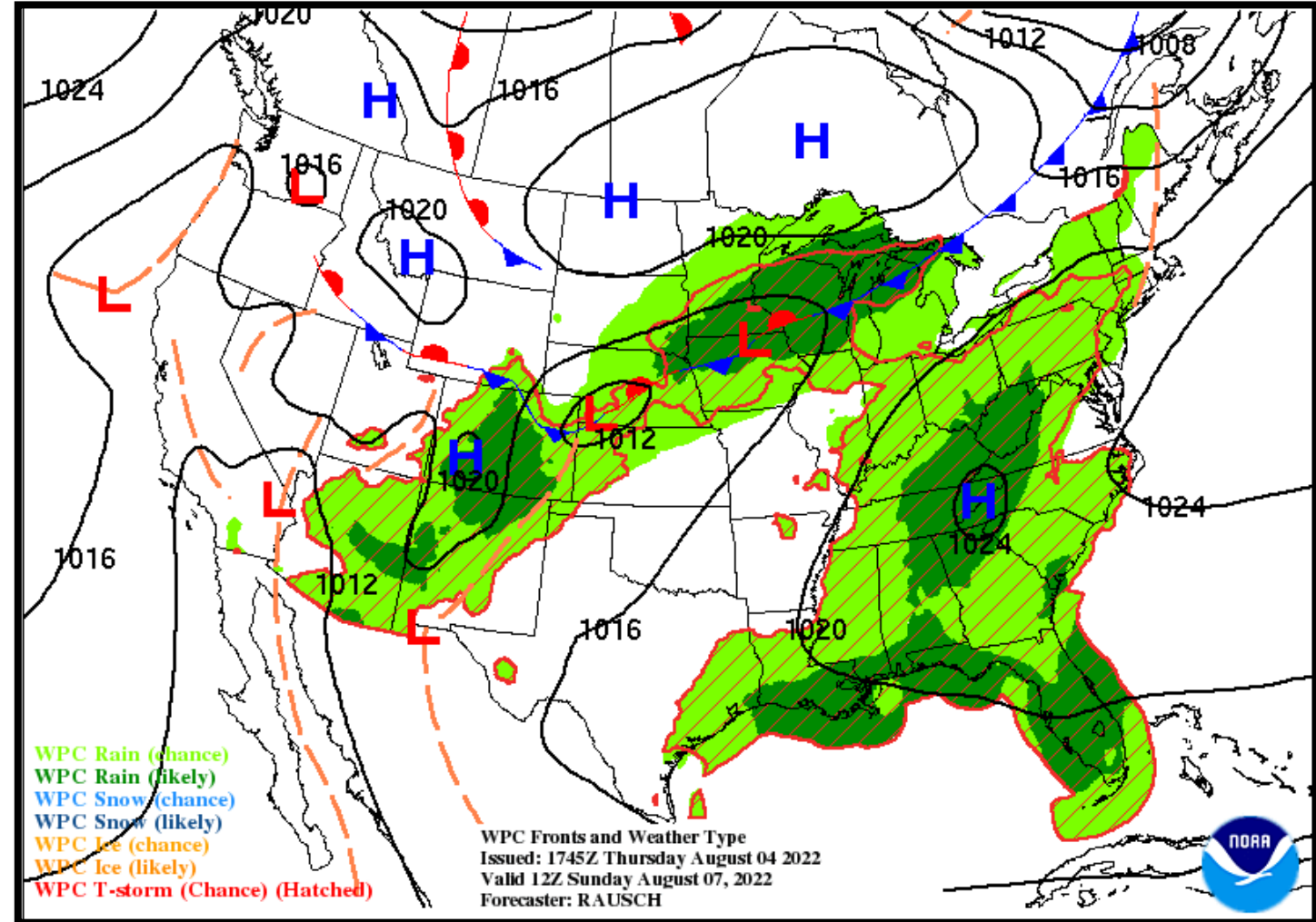
### NWS LCH REGIONAL WEATHER

Low Temperature	72-76 F
High Temperature	89-92 F
Wind	SE 5-10 mph
Rain Chances	35-70%
Weather Hazards	Thunderstorms



### NWS LCH REGIONAL WEATHER

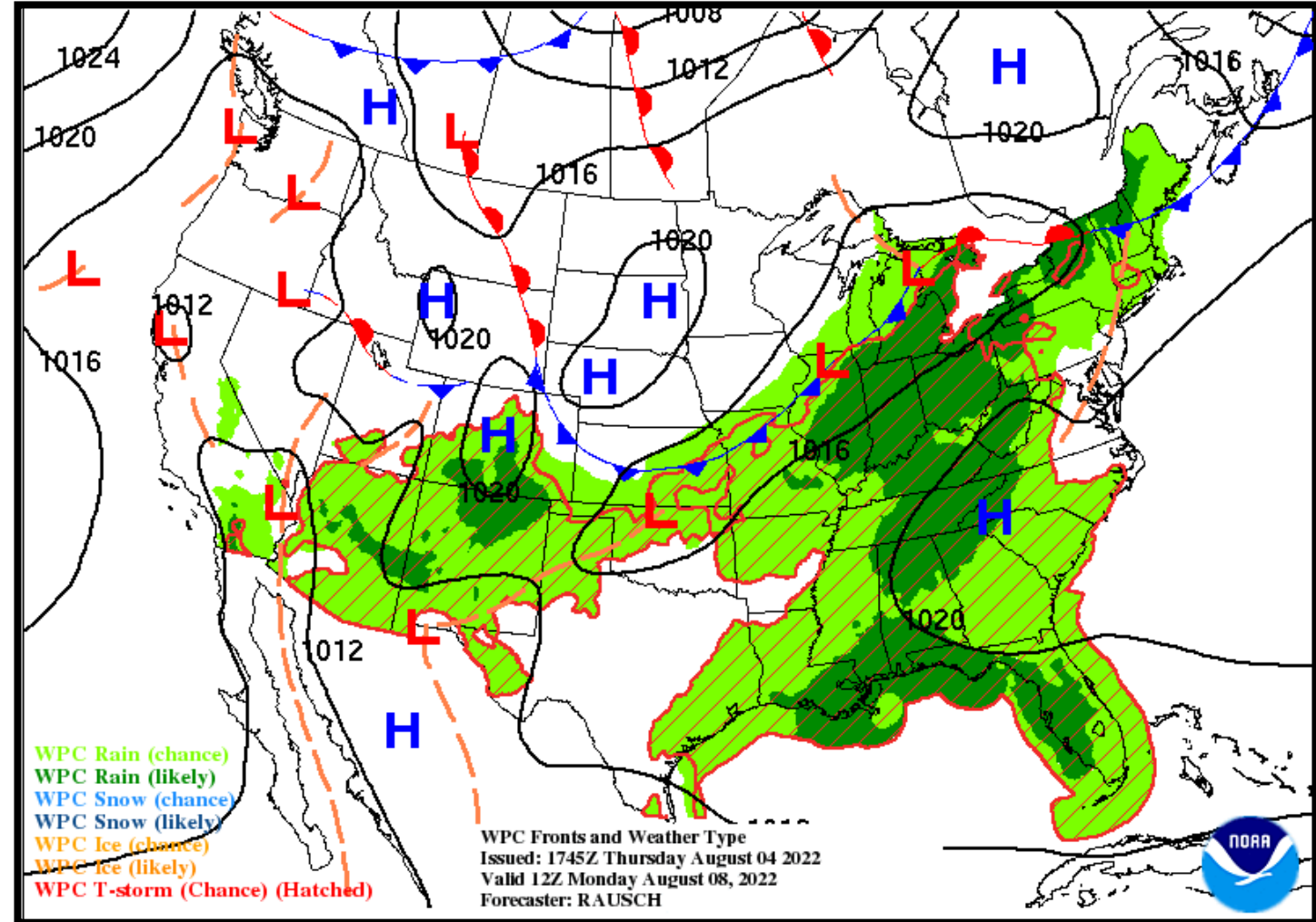
Low Temperature	72-75 F
High Temperature	89-92 F
Wind	SE 5-10 mph
Rain Chances	40-75%
Weather Hazards	None





### NWS LCH REGIONAL WEATHER

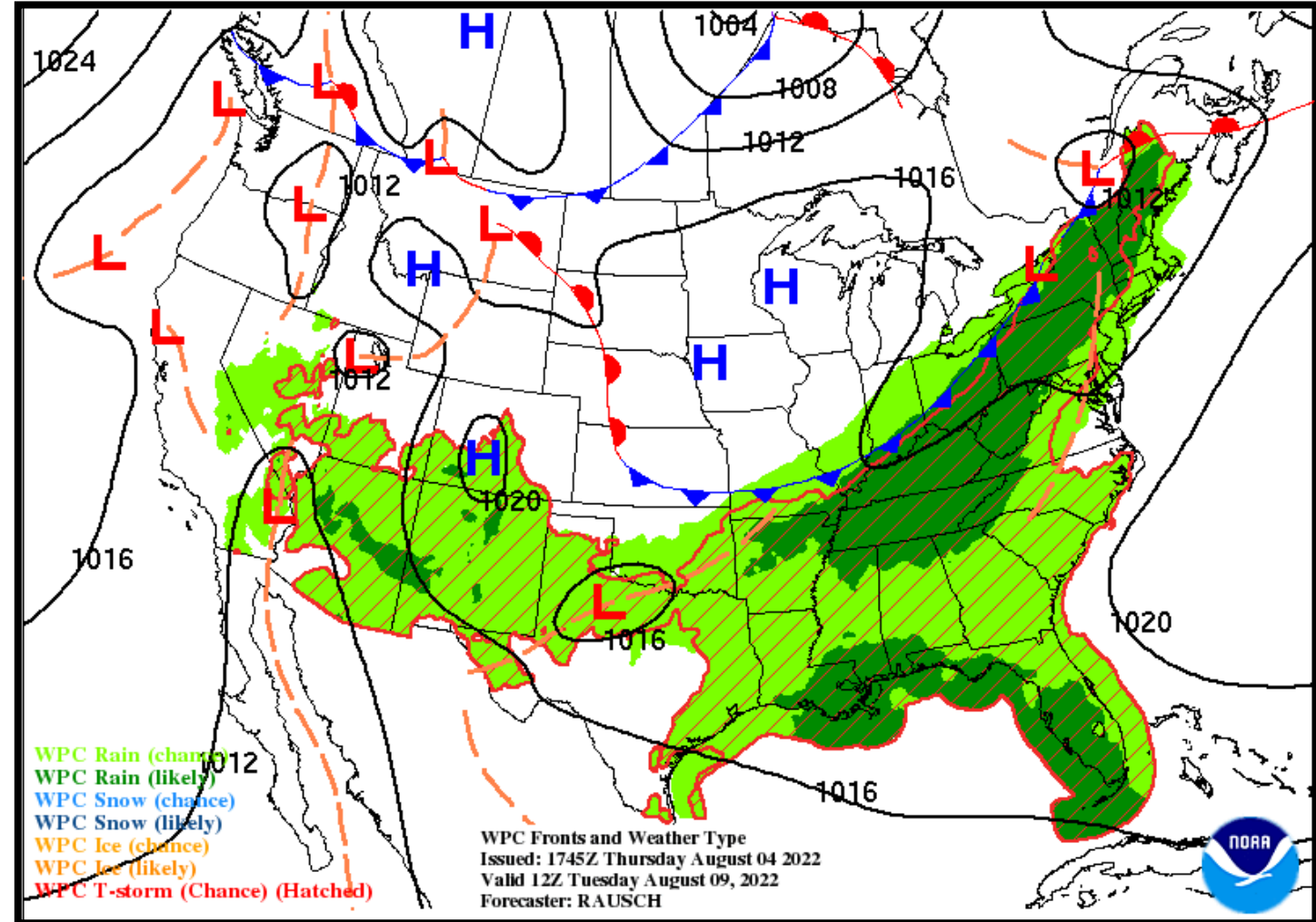
Low Temperature	72-75 F
High Temperature	89-93 F
Wind	SE 5 mph
Rain Chances	40-60%
Weather Hazards	Thunderstorms





### NWS LCH REGIONAL WEATHER

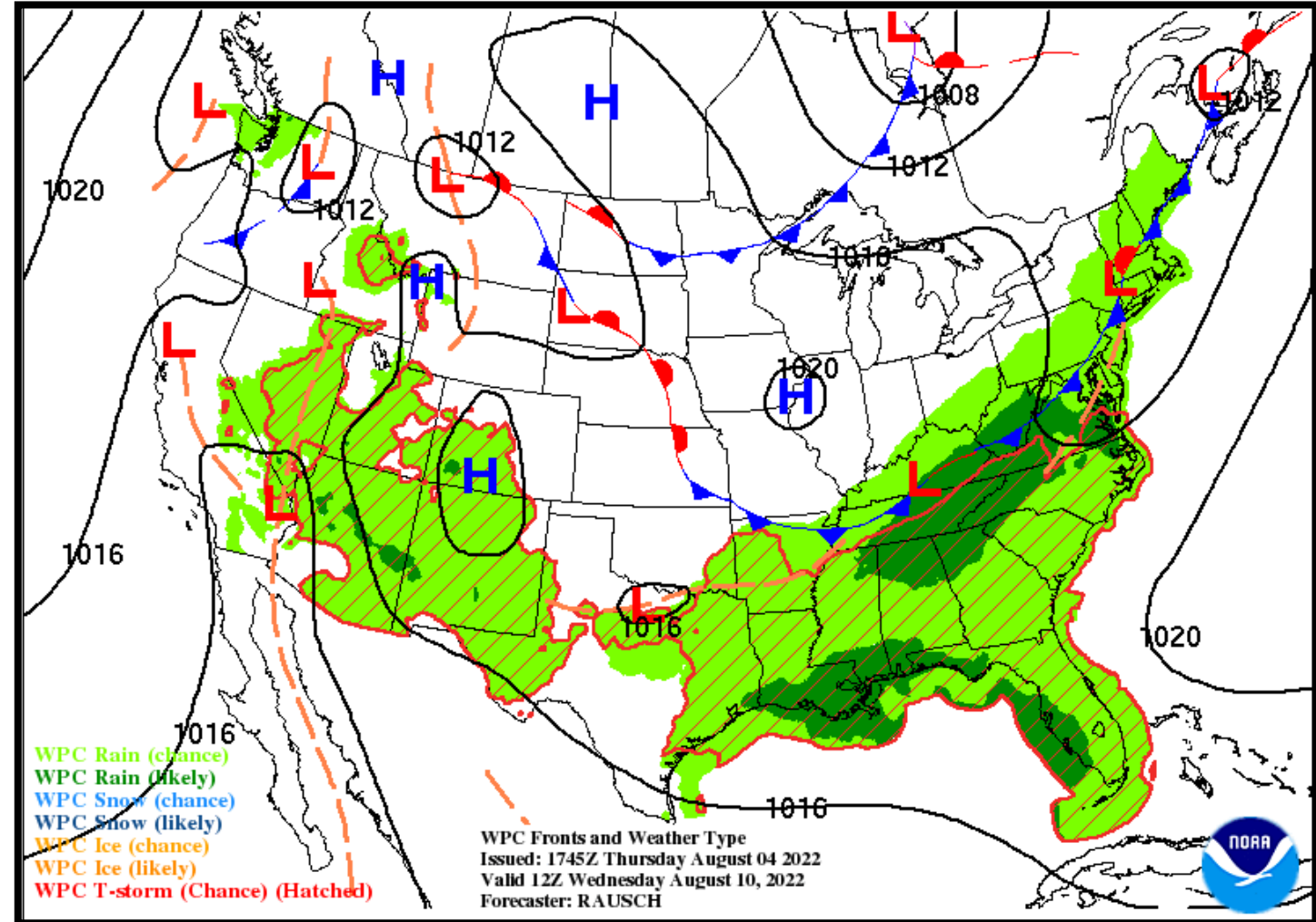
Low Temperature	72-75 F
High Temperature	89-93 F
Wind	SSE 5 mph
Rain Chances	40-60%
Weather Hazards	Thunderstorms





### NWS LCH REGIONAL WEATHER

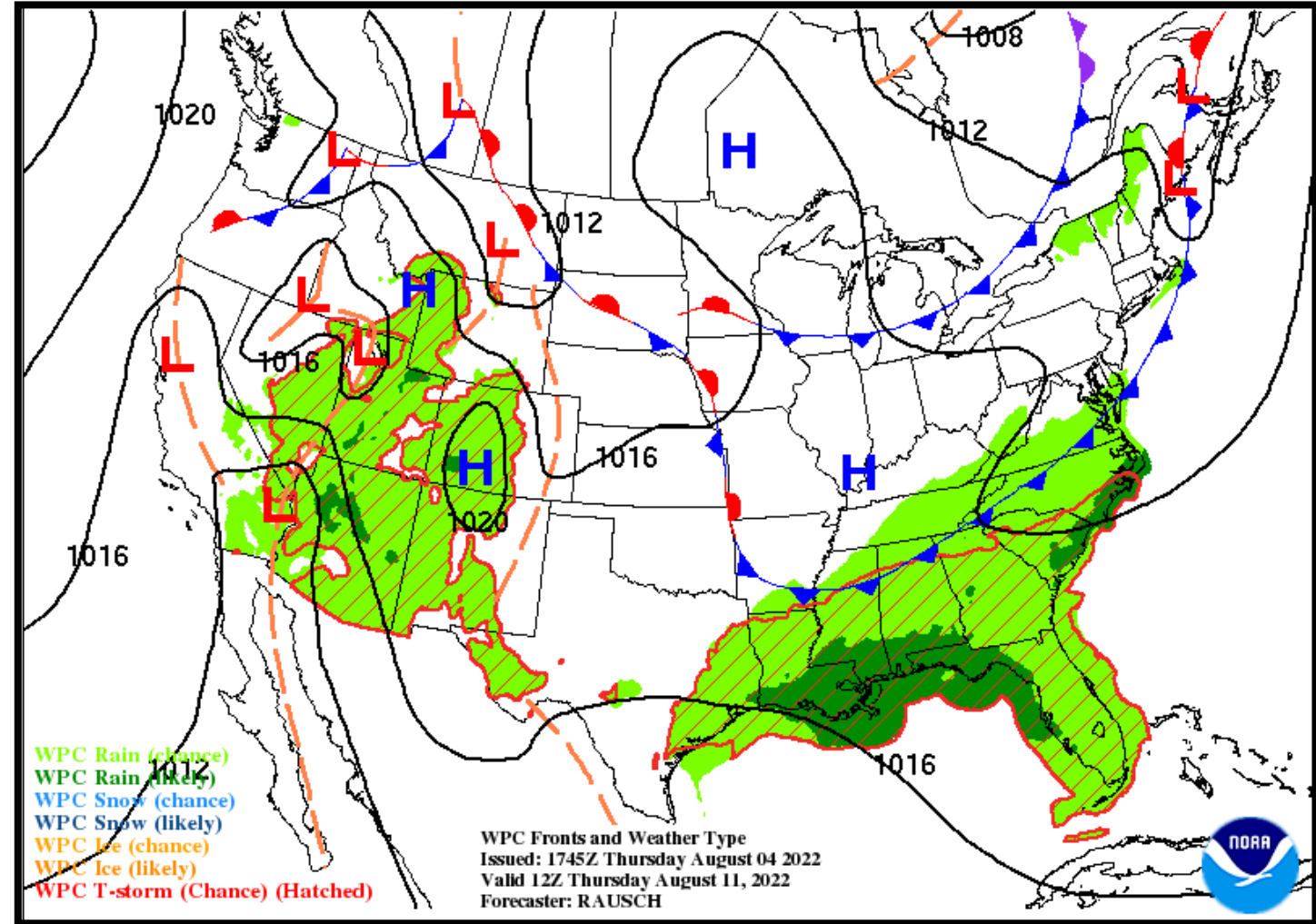
Low Temperature	72-74 F
High Temperature	89-91 F
Wind	SSE 5 mph
Rain Chances	45-60%
Weather Hazards	None





### NWS LCH REGIONAL WEATHER

Low Temperature	71-75 F
High Temperature	90-92 F
Wind	NE 0-5 mph
Rain Chances	40-60%
Weather Hazards	Thunderstorms



# Weekly Weather Summary Table



Lake Charles  
WEATHER FORECAST OFFICE

Color Codes Except for Temperatures
Yellow = Low Threat
Orange = Moderate Threat
Red = High Threat

Color Codes For Temperatures
Yellow=5 F above normal
Orange=10 F above normal
Red=15 F above normal
Vry Lt Blue=5 F below normal
Lt Blue=10 F below normal
Blue=15 F below normal

Weather	Friday 08/05/22	Saturday 08/06/22	Sunday 08/07/22	Monday 08/08/22	Tuesday 08/09/22	Wednesday 08/10/22	Thursday 08/11/22
Rain Total	0.50-1.0"	0.25-0.50"	0.25-0.50"	0.10-0.25"	0.25-0.50"	0.25-0.50"	0.05-0.37
T-Storm/ Lightning	Scattered	Scattered	Scattered	Scattered	Scattered	Scattered	Scattered
Tornado/Hail/ Dmg Wind	None	None	None	None	None	None	None
Wind	SE 5-10 mph	SE 5-10 mph	SE 5-10 mph	SE 5 mph	SSE 5 mph	SSE 5 mph	NE 0-5 mph
Tides	Near Normal	Above Normal	Above Normal	Above Normal	Above Normal	Above Normal	Above Normal
Wave Height	Near: 1-2 ft Off: 2-3 ft	Near: 1-3 ft Off: 3-4 ft	Near: 1-2 ft Off: 2-3 ft	Near: 1-2 ft Off: 2-3 ft	Near: 1-2 ft Off: 2-3 ft	Near: 1-2 ft Off: 2-3 ft	Near: 1-2 ft Off: 2-3 ft
Temperature	Low: 73-76 F	Low: 72-76 F	Low: 72-75 F	Low: 72-75 F	Low: 72-75 F	Low: 72-74 F	Low: 71-75 F
<small>Normal Low: 70-74 F Normal High: 90-93 F</small>	High: 87-90 F	High: 89-92 F	High: 89-92 F	High: 89-93 F	High: 89-93 F	High: 89-91 F	High: 90-92 F





- Localized flooding will develop from slow moving stronger storms this weekend and into next week.
- Showers and thunderstorms Friday and into the weekend.
- No rivers are in flood at this time but look for rises on area rivers... bayous... and creeks.

