



Weekly Weather Update

2:30 PM CDT

Thursday, October 14, 2021

Joe Rua, *NWS Lake Charles*



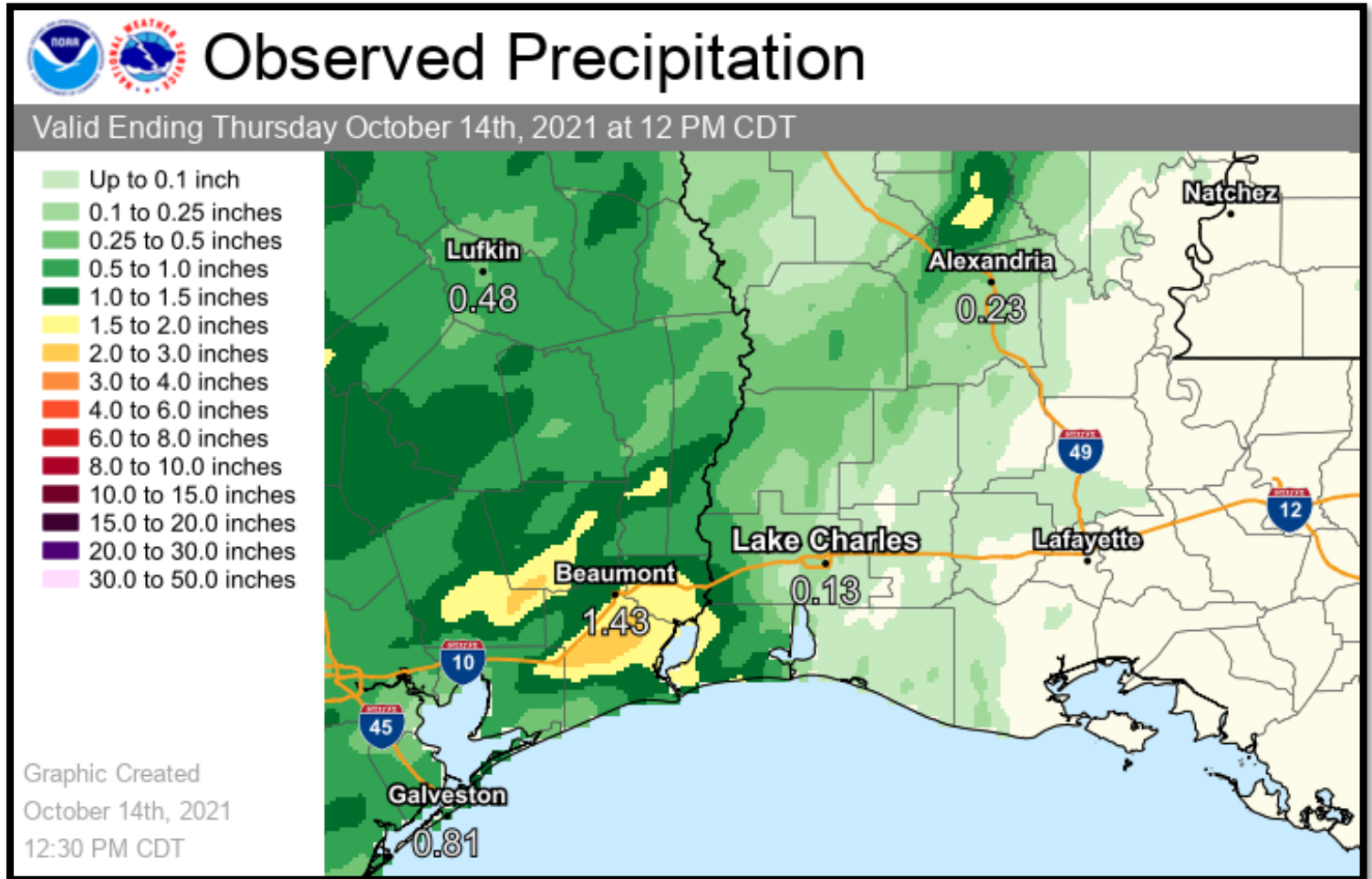


TOP STORY:

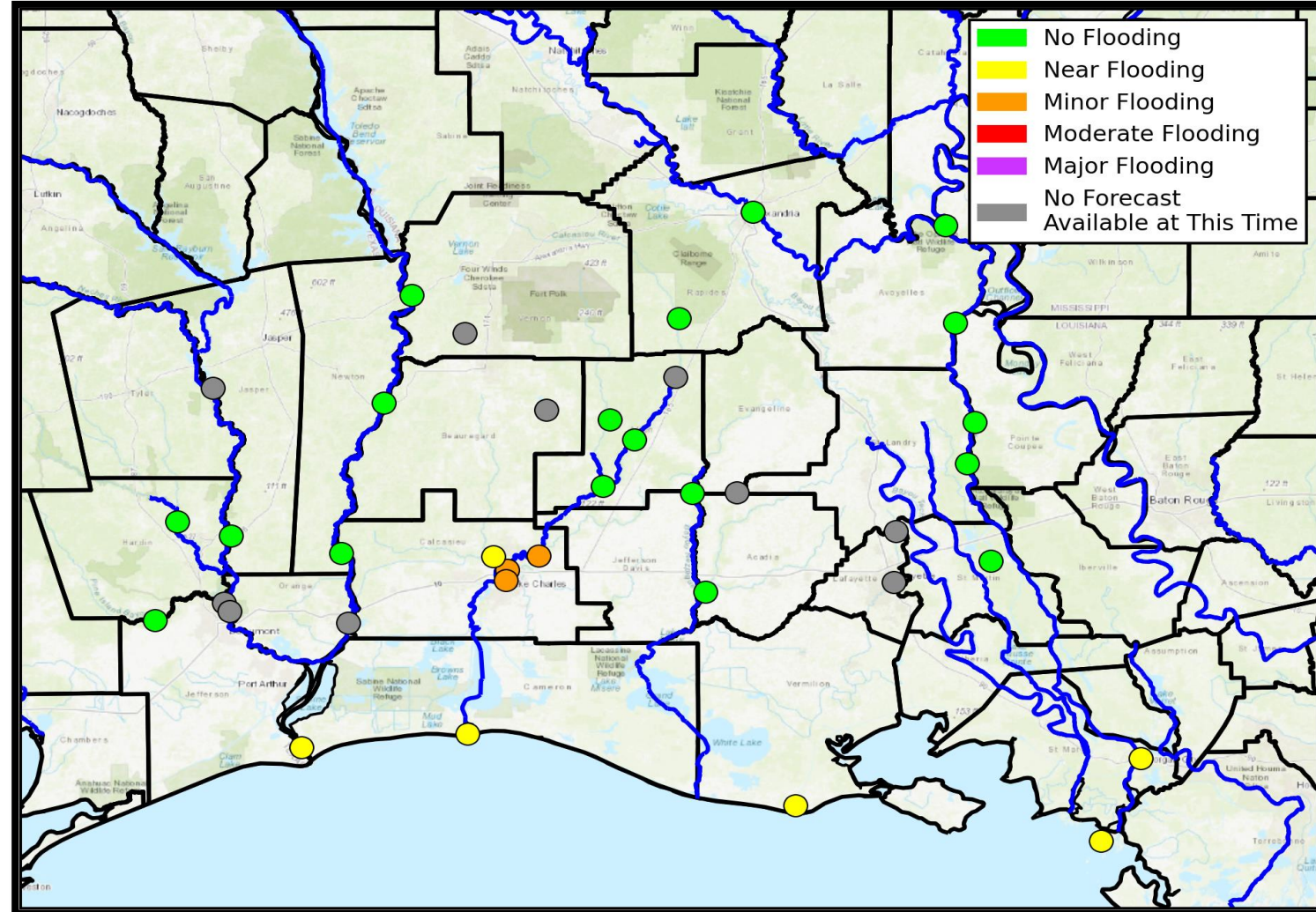
Unseasonably warm and humid conditions through Friday. A cold front will move across Friday night providing nice fall weather through the weekend into early next week.

	Low Temperatures	High Temperatures	Chance For Rain
Friday	71-75 F	87-89 F	30-45%
Saturday	54-60 F	72-75 F	<10%
Sunday	47-53 F	74-76 F	<10%
Monday	50-54 F	76-79 F	<10%
Tuesday	50-58 F	78-82 F	10%
Wednesday	58-63 F	79-83 F	15-25%
Thursday	60-64 F	77-82 F	20-25%
Normals This Time of Year	52-59 F	78-79 F	20%-30%

Spotty showers and a few thunderstorms have developed during the week with the warm and moist air mass. No real organized areas of heavy rainfall have occurred.



Minor flooding is expected through Friday on the lower Calcasieu River, for White Oak Park and Salt Water Barrier. This is mainly due to persistent onshore flow and tidal influences.

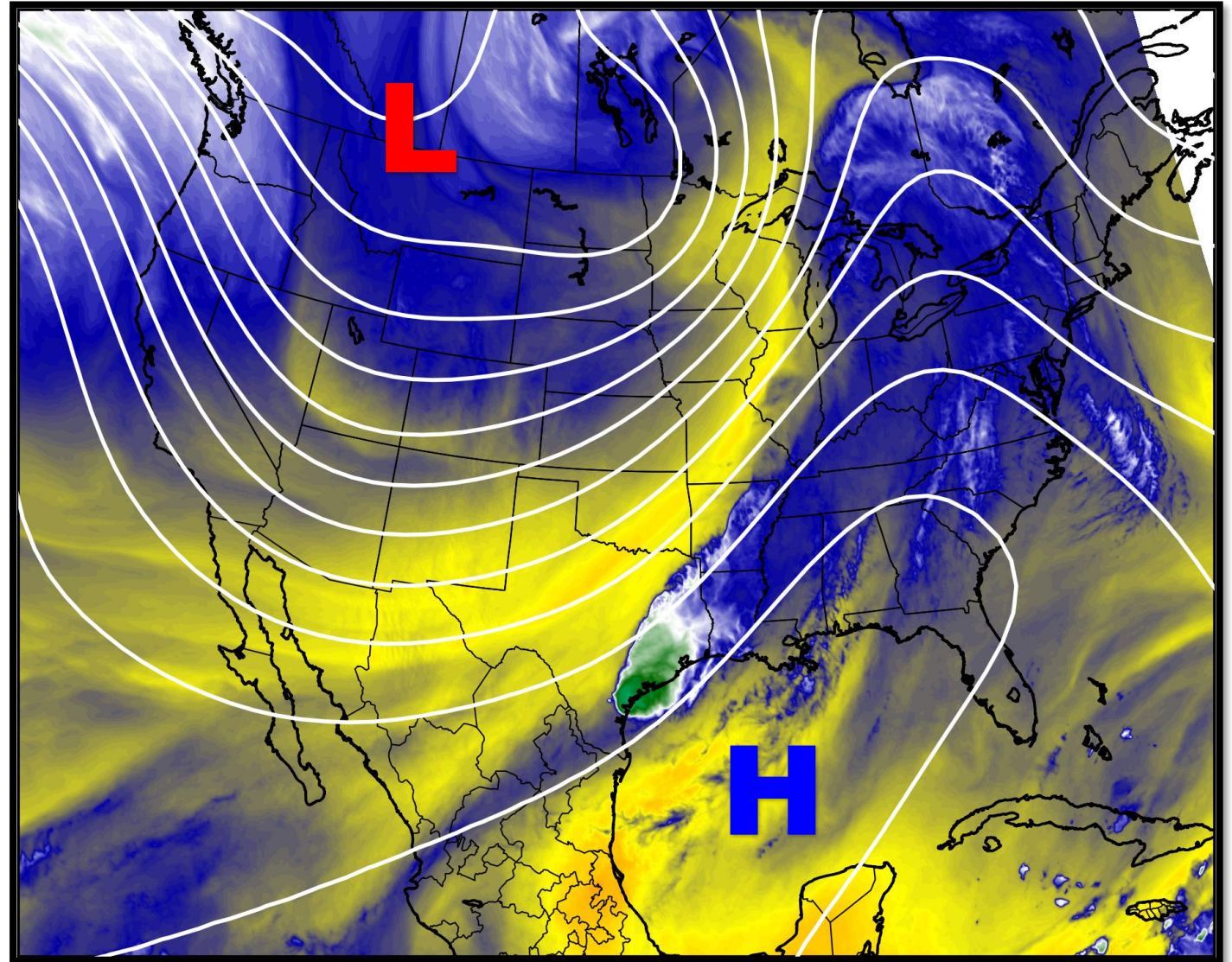


Upper Level Steering Patterns



Lake Charles
WEATHER FORECAST OFFICE

The weather pattern shows an upper level low and trough digging down from the Mountain West and an upper level ridge across the Gulf of Mexico into the southeast US. The remnants of East Pac Tropical Cyclone Pamela can be seen over east Texas.

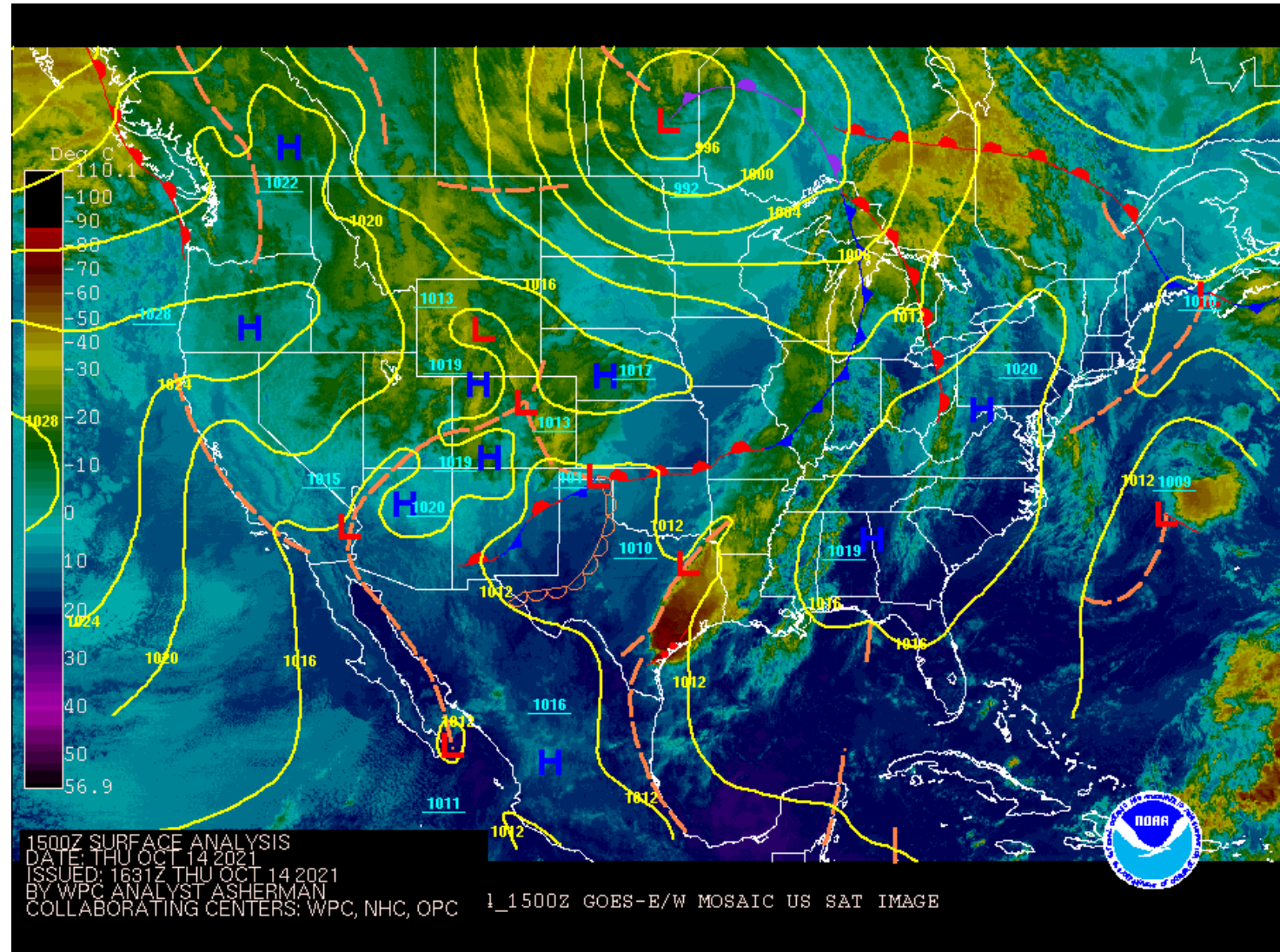


Surface Weather Map with Fronts



Lake Charles
WEATHER FORECAST OFFICE

High pressure is centered over the southeast US, bringing in southerly winds to the region. Meanwhile a surface frontal boundary extends from the Great Lakes to the Southern Plains.

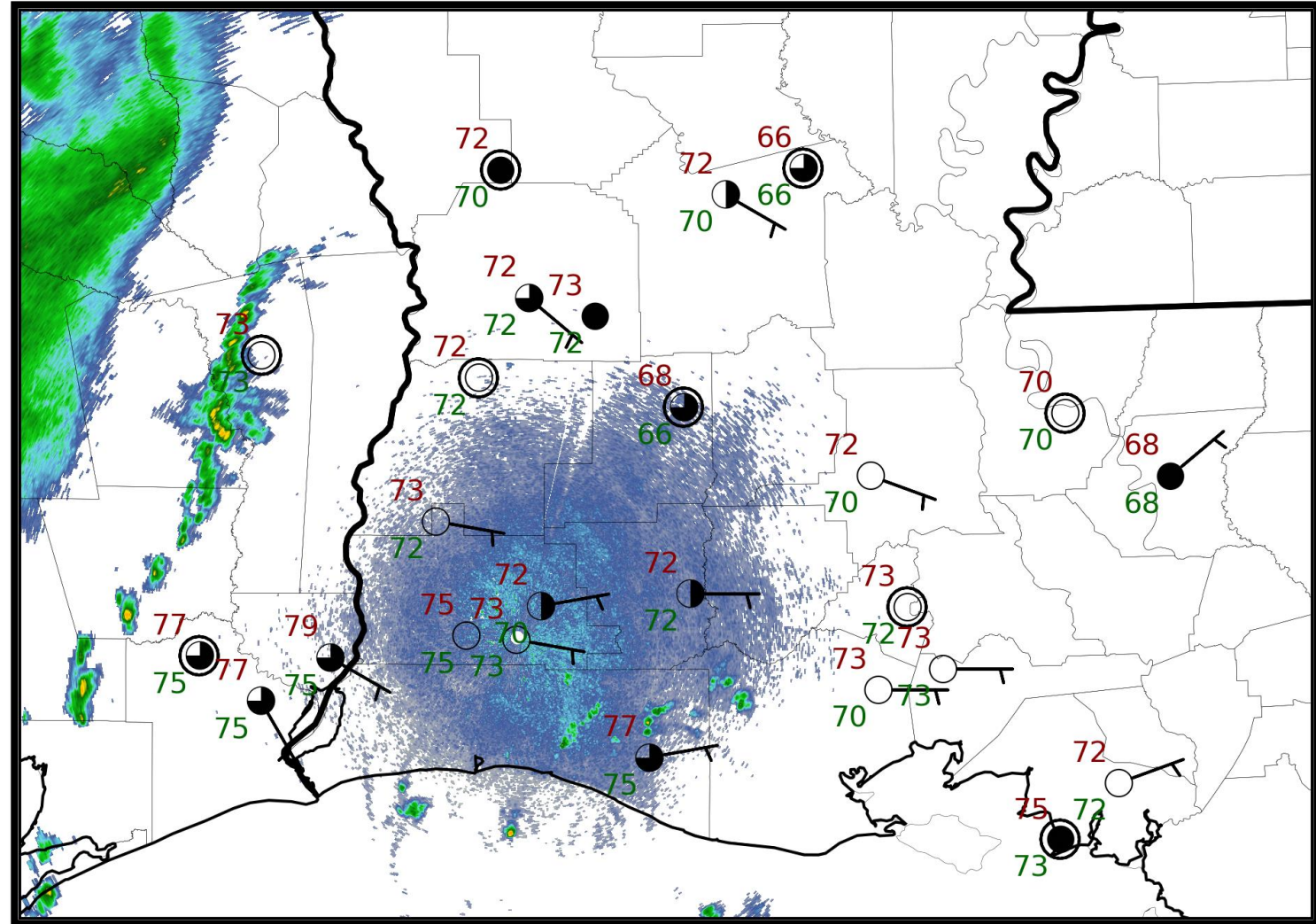


6 am Weather Observations



Lake Charles
WEATHER FORECAST OFFICE

The muggy air mass in place was producing above normal temperatures along with patchy fog. A few showers associated with the remnant moisture of Pamela and an upper level disturbance were noted over portions of southeast Texas.

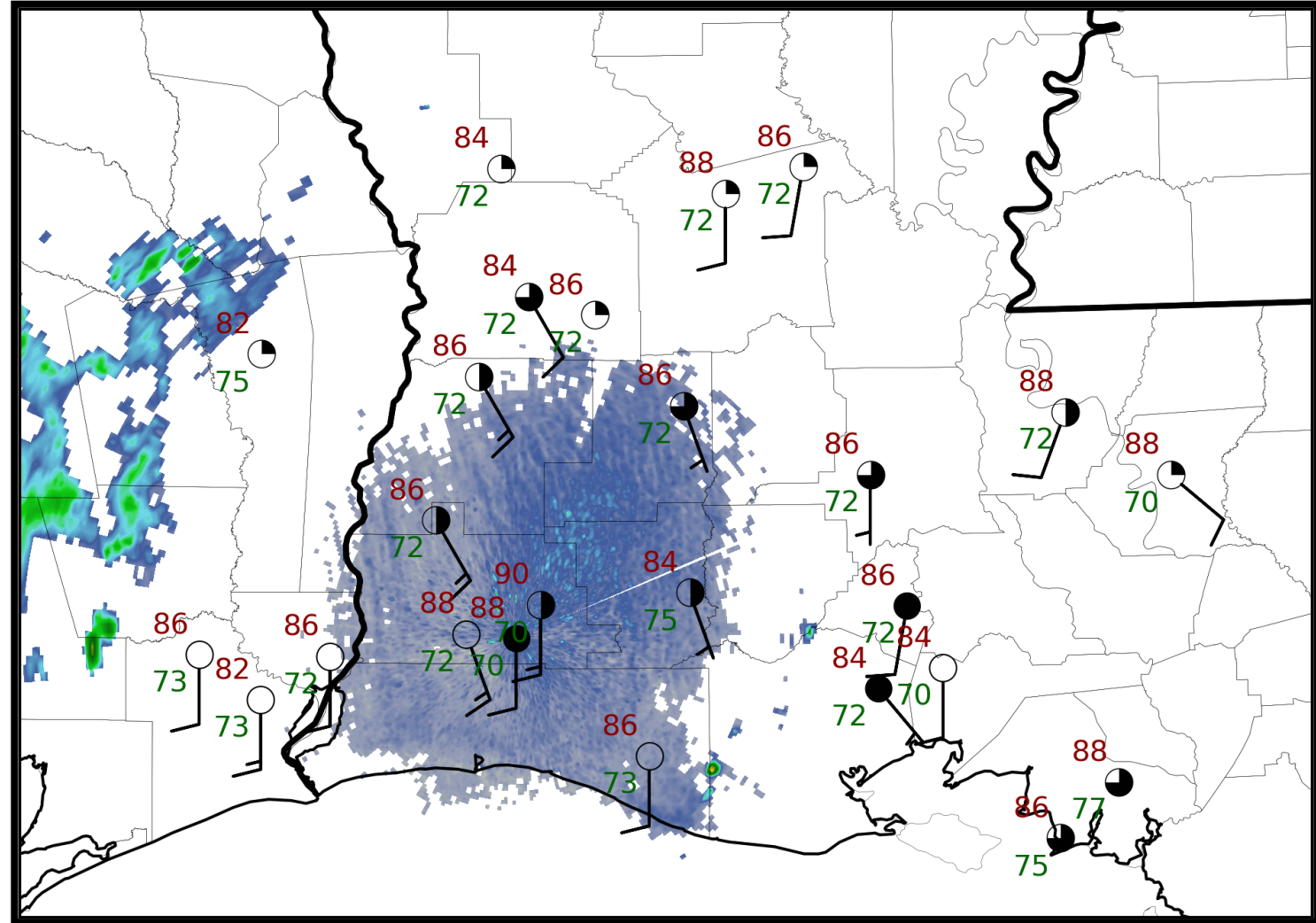


2 pm Weather Observations



Lake Charles
WEATHER FORECAST OFFICE

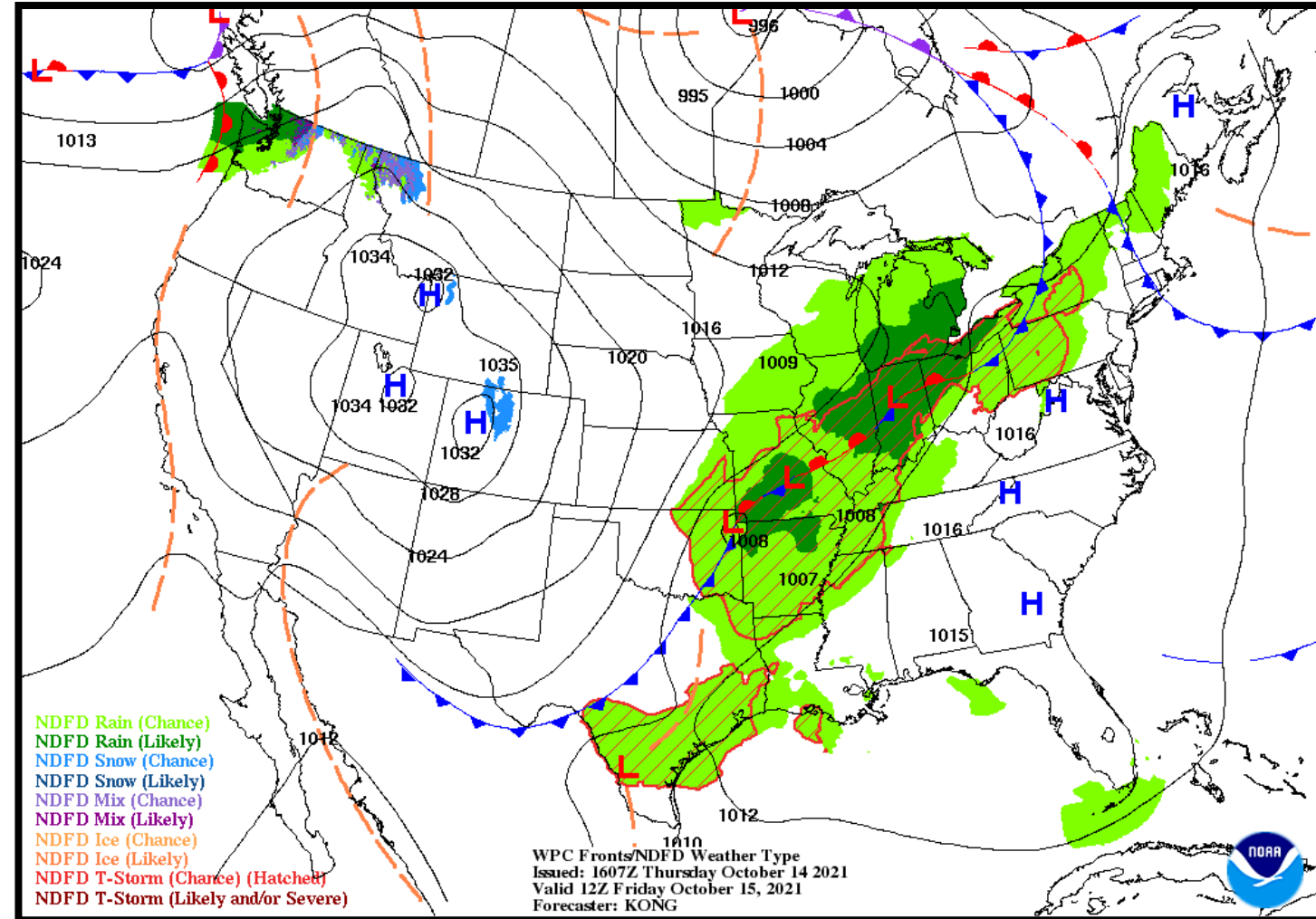
Very warm and humid. Temperatures are in the mid 80s to near 90 degrees. The heat index is in the low to mid 90s at a majority of the locations. Some showers are still affecting southeast Texas.





NWS LCH REGIONAL WEATHER

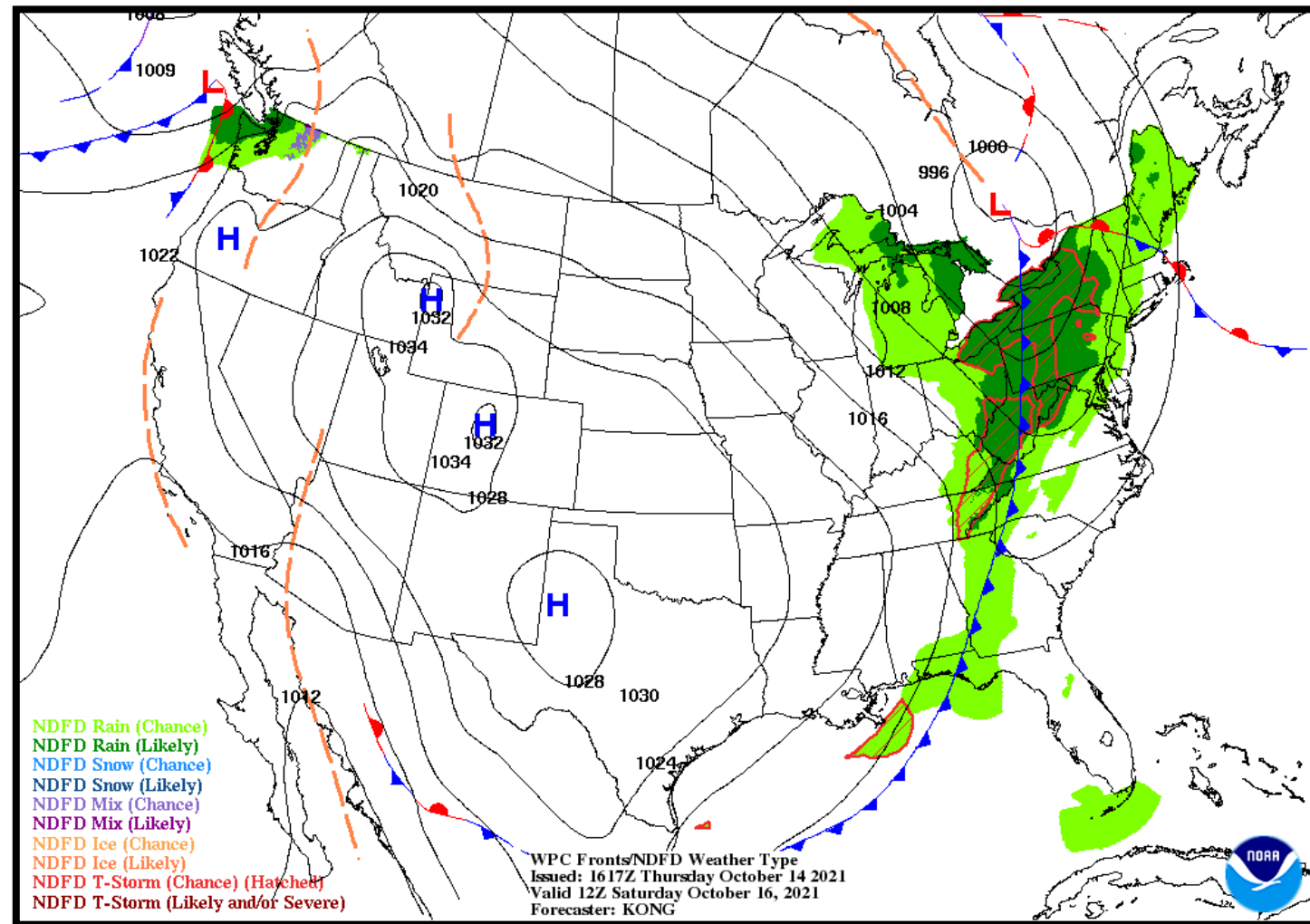
Low Temperature	71-75 F
High Temperature	87-89 F
Wind	SW 5 mph
Rain Chances	30-45%
Weather Hazards	Thunderstorms





NWS LCH REGIONAL WEATHER

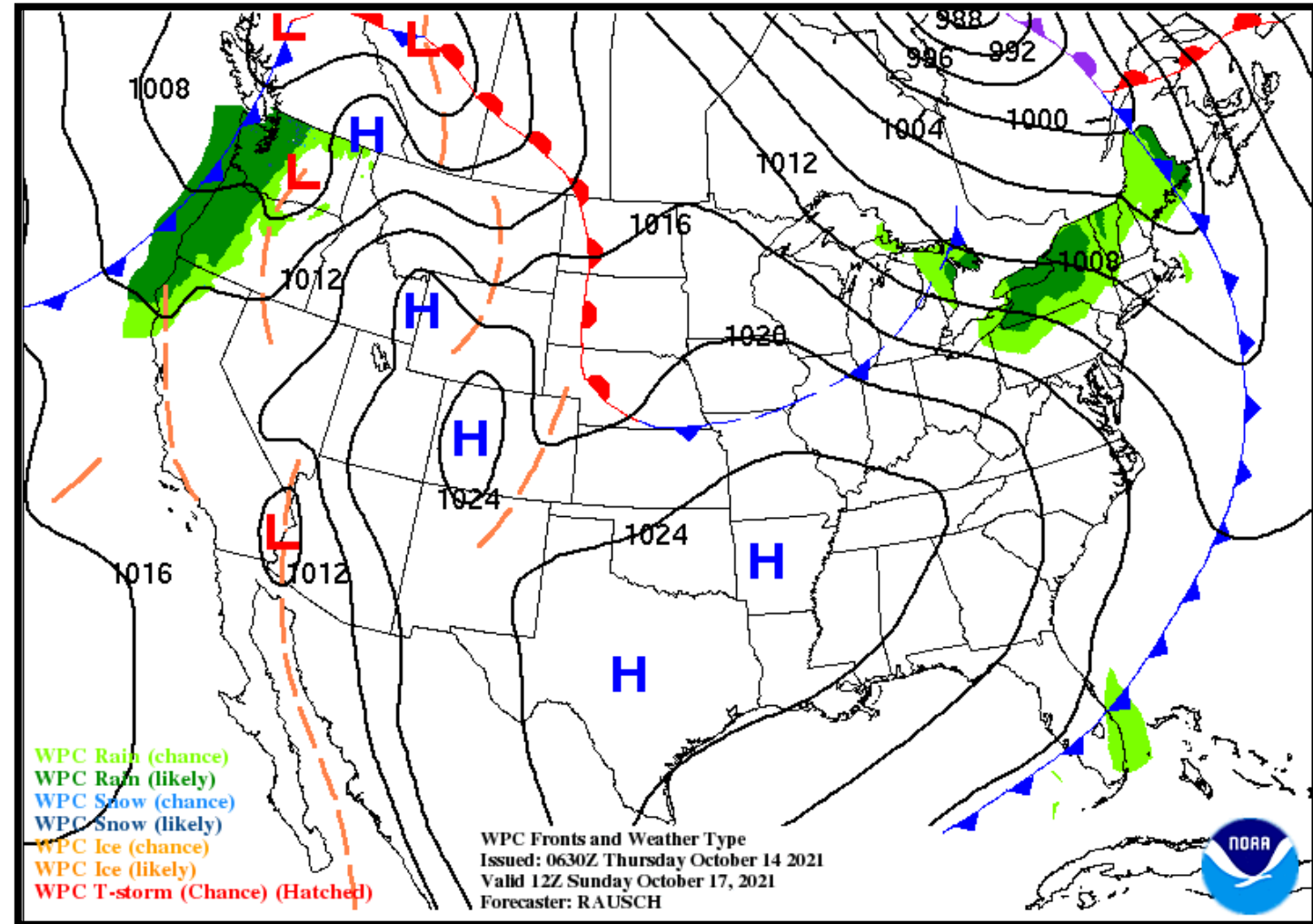
Low Temperature	54-60 F
High Temperature	72-75 F
Wind	N 10-15 mph
Rain Chances	<10%
Weather Hazards	None





NWS LCH REGIONAL WEATHER

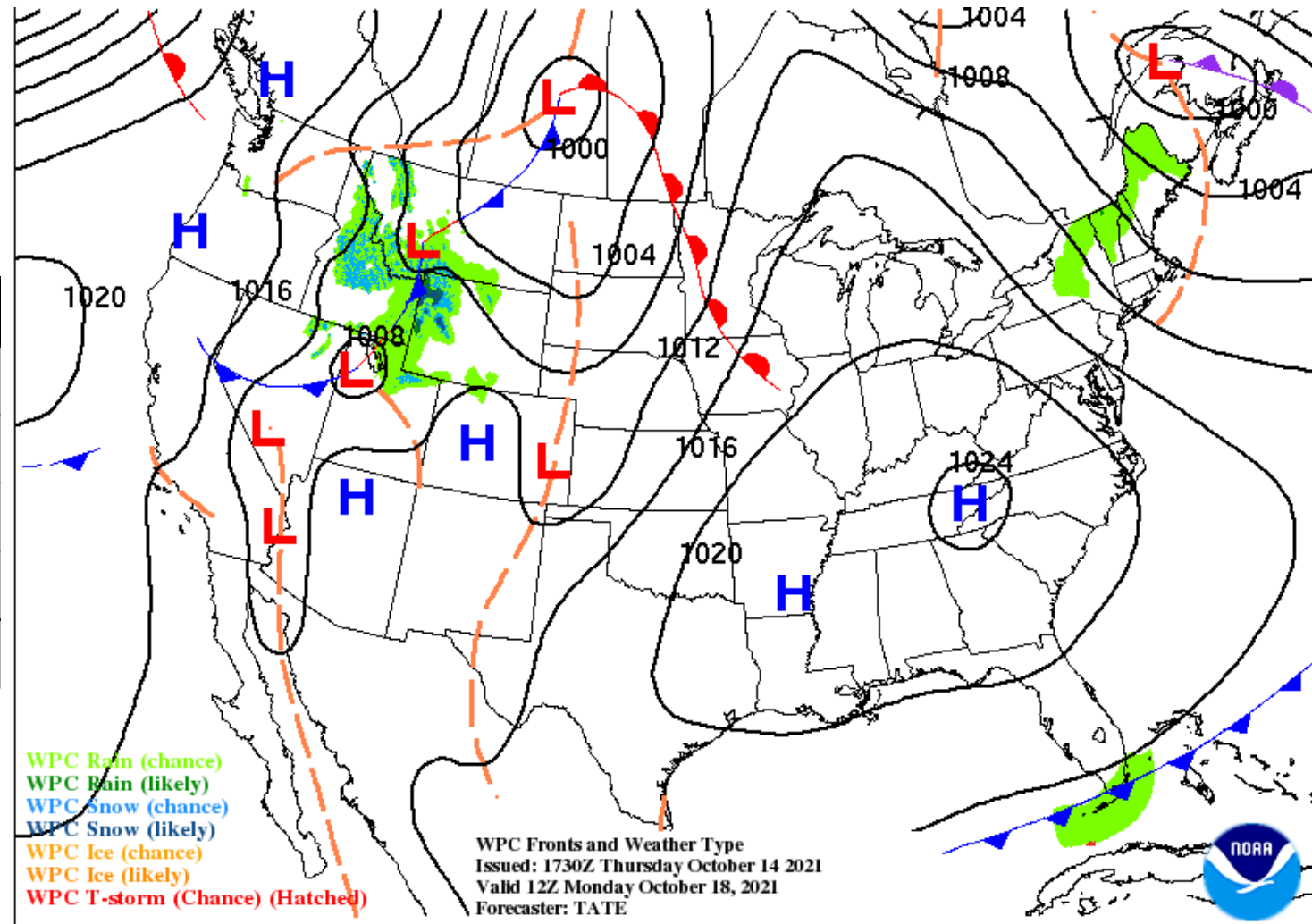
Low Temperature	47-53 F
High Temperature	74-76 F
Wind	NE 5-10 mph
Rain Chances	<10%
Weather Hazards	None





NWS LCH REGIONAL WEATHER

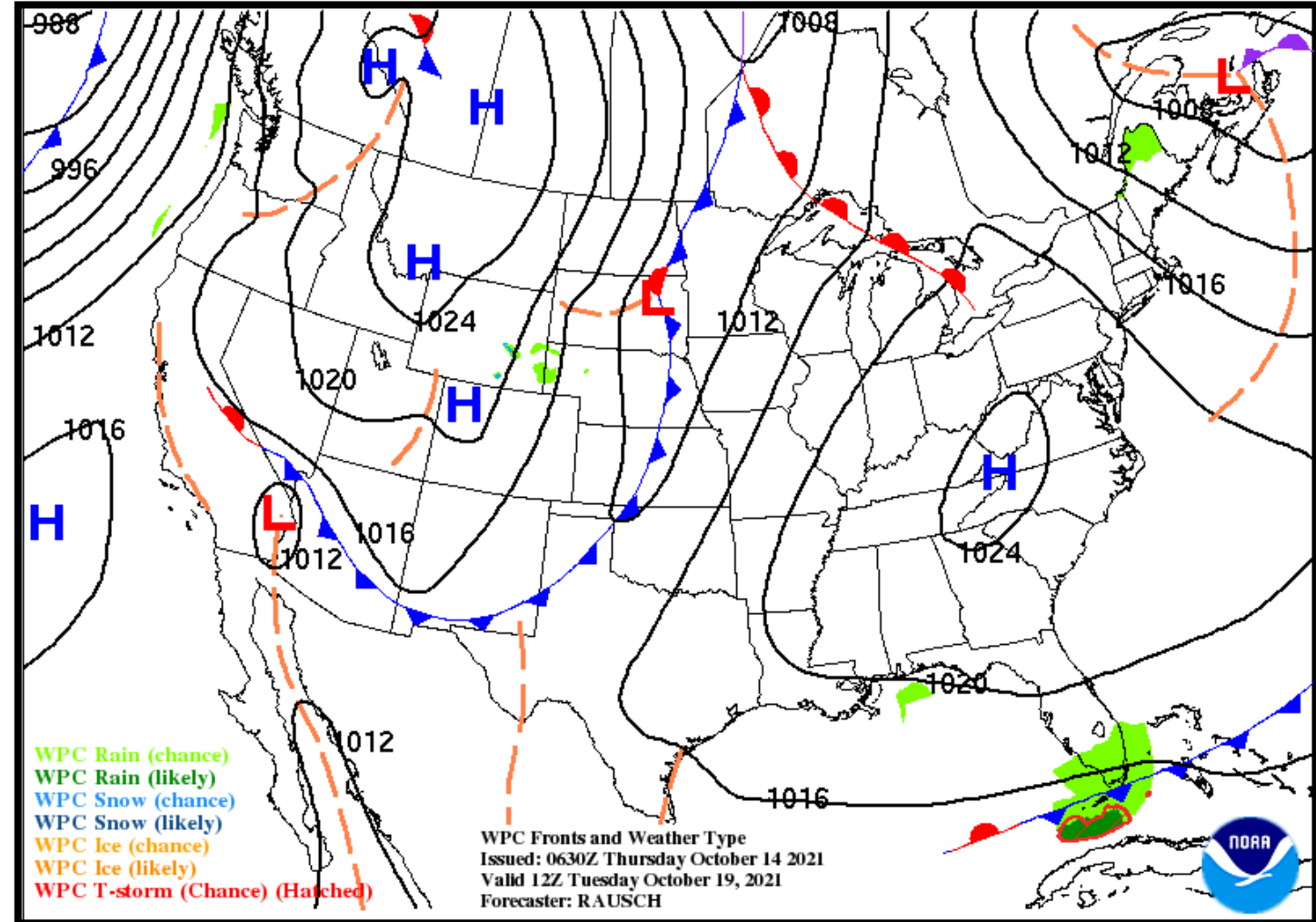
Low Temperature	50-54 F
High Temperature	76-79 F
Wind	E 5 mph
Rain Chances	<10%
Weather Hazards	None





NWS LCH REGIONAL WEATHER

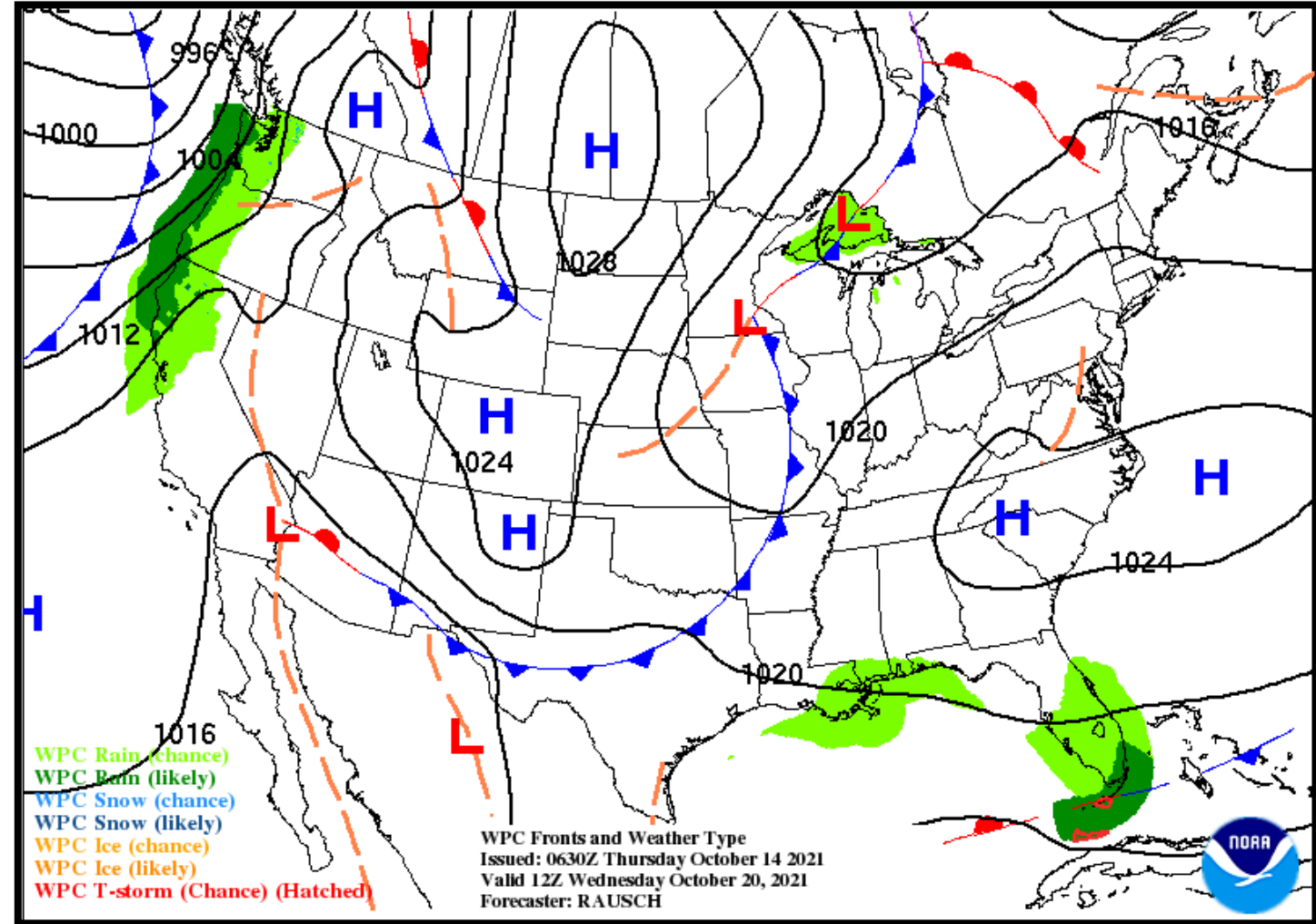
Low Temperature	50-58 F
High Temperature	78-82 F
Wind	E 5 mph
Rain Chances	10%
Weather Hazards	None





NWS LCH REGIONAL WEATHER

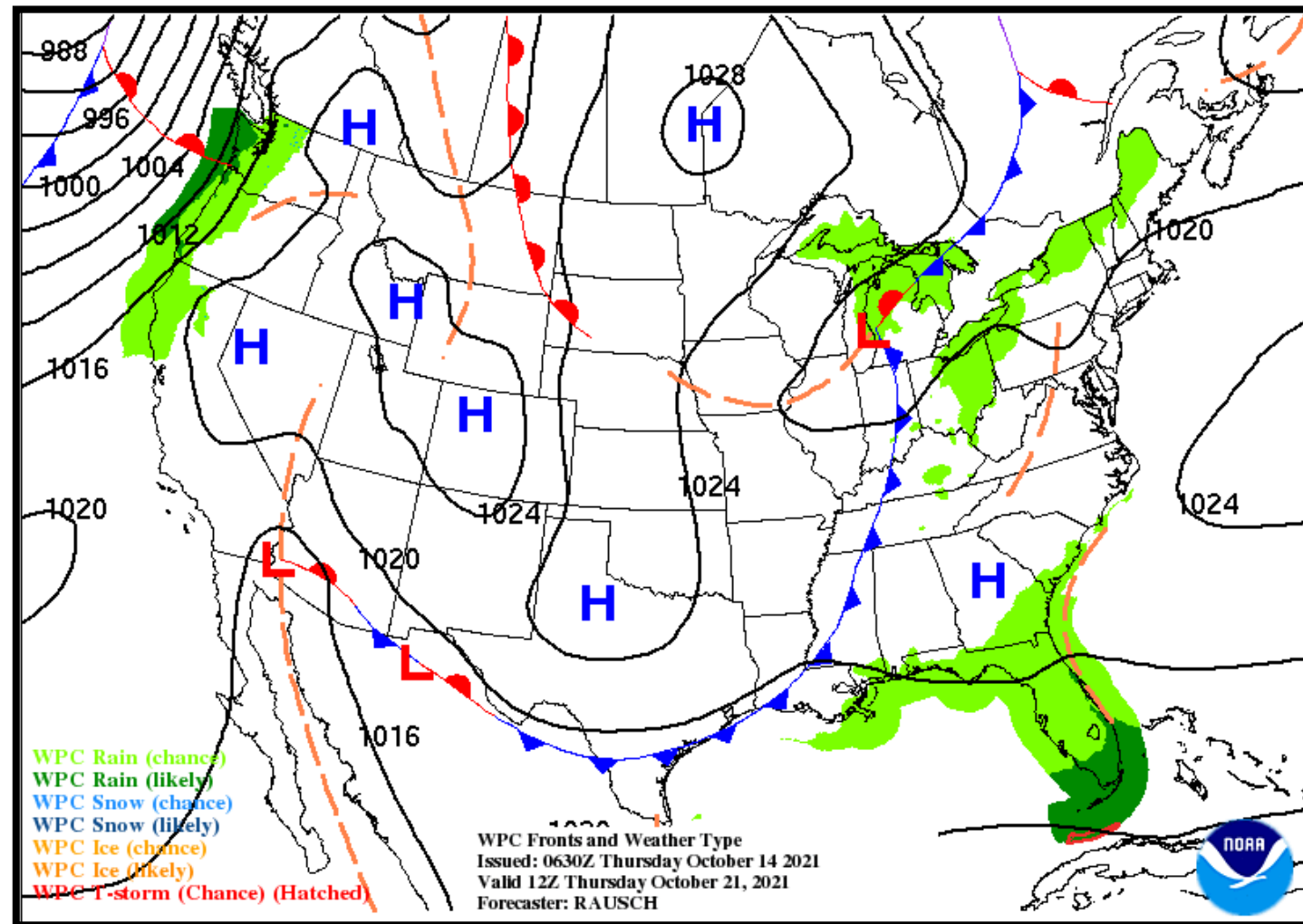
Low Temperature	58-63 F
High Temperature	79-83 F
Wind	E 5 mph
Rain Chances	15-25%
Weather Hazards	Thunderstorms





NWS LCH REGIONAL WEATHER

Low Temperature	60-64 F
High Temperature	77-82 F
Wind	NE 5 mph
Rain Chances	20-25%
Weather Hazards	Thunderstorms



Weekly Weather Summary Table



Lake Charles
WEATHER FORECAST OFFICE

Color Codes Except for Temperatures	Weather	Friday 10/15/21	Saturday 10/16/21	Sunday 10/17/21	Monday 10/18/21	Tuesday 10/19/21	Wednesday 10/20/21	Thursday 10/21/21
Yellow = Low Threat	Rain Total	0.25-0.50"	None	None	None	<0.10"	0.10-0.25"	0.10-0.25"
Orange = Moderate Threat	T-Storm/ Lightning	Isolated	None	None	None	None	Isolated	Isolated
Red = High Threat	Tornado/Hail/ Dmg Wind	None	None	None	None	None	None	None
	Wind	SW 5 mph	N 10-15 mph	NE 5-10 mph	E 5 mph	E 5 mph	E 5 mph	NE 5 mph
	Tides	Above Normal	Normal	Normal	Normal	Above Normal	Above Normal	Above Normal
	Wave Height	Near: 1-3 ft Off: 3-4 ft	Near: 1-5 ft Off: 6-7 ft	Near: 1-3 ft Off: 4-6 ft	Near: 1-2 ft Off: 3-4 ft	Near: 1-3 ft Off: 3-4 ft	Near: 1-3 ft Off: 3-4 ft	Near: 1-3 ft Off: 3-4 ft
	Temperature	Low: 71-75 F High: 87-89 F	Low: 54-60 F High: 72-75 F	Low: 47-53 F High: 74-76 F	Low: 50-54 F High: 76-79 F	Low: 50-58 F High: 78-82 F	Low: 58-63 F High: 79-83 F	Low: 60-64 F High: 77-82 F

Flood Level Changes at Oakdale

For the Calcasieu River...

Weather Forecast Office
Lake Charles, LA
Issued October 14, 2021 2:25 PM CDT



Due to a new USGS River Gage along the Calcasieu River at Oakdale, the river flood levels and categories need to be change by 5 feet for the new datum. The changes will go into effect on Wednesday November 17, 2021.

-CRITICAL STAGE-	-PRESENT LEVEL-	-NEW LEVEL-
ACTION	10	15
FLOOD STAGE (MINOR)	12	17
MODERATE	16	21
MAJOR	22	27

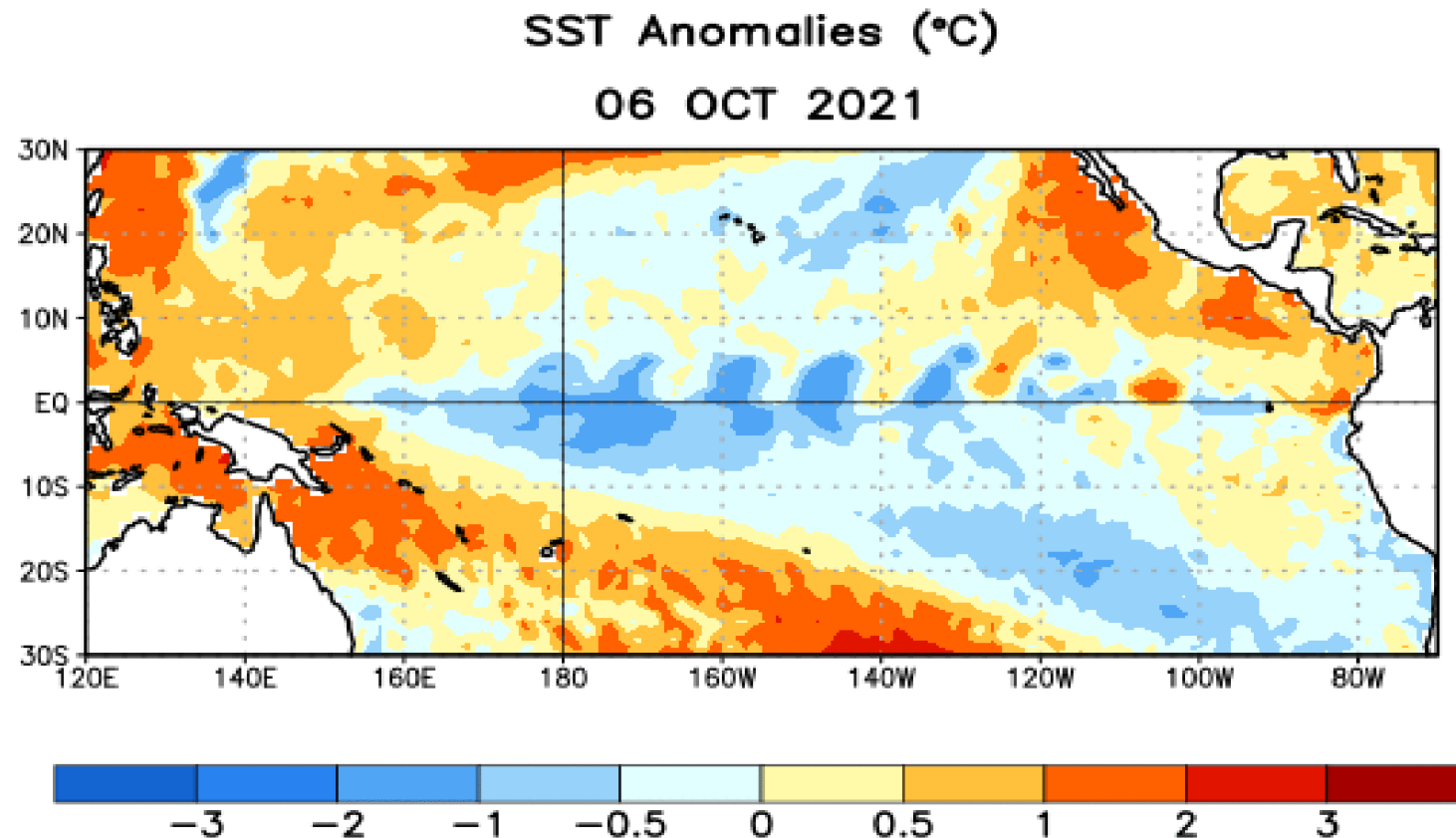
La Nina Advisory

Issued by the Climate Prediction Center

Weather Forecast Office
Lake Charles, LA
Issued October 14, 2021 2:25 PM CDT



Sea Surface Temperatures have cooled enough below normal values across the equatorial Pacific between 100W and 180W that a La Nina Advisory was issued today by NOAA's Climate Prediction Center.



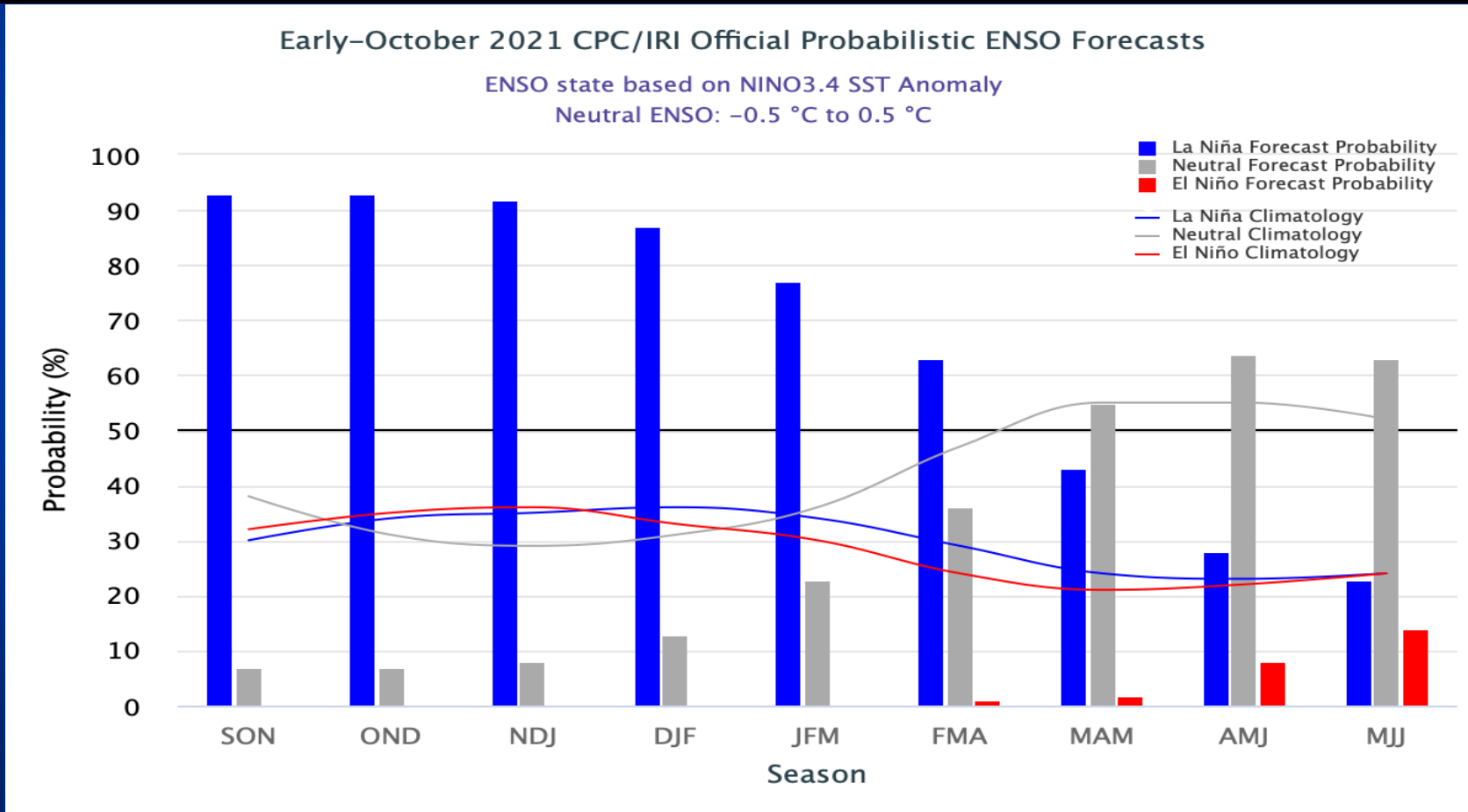
La Nina Advisory

Issued by the Climate Prediction Center

Weather Forecast Office
Lake Charles, LA
Issued October 14, 2021 2:25 PM CDT



The La Nina conditions are expected to continue through the winter with Neutral ENSO conditions forming in the Spring. During La Nina winter's the southern US would expect warmer and drier weather. However, this is not always the case, for example, last year (2020.)





- Unseasonably warm and humid until Friday.
- A Cold Front will move across Friday night. A few showers and thunderstorms possible until the front passes.
- Very Nice Fall weather behind the front through the weekend into early next week.

