
MRF-Based MOS Temperature/Dewpoint Forecasts

Kevin L. Carroll and Mary C. Erickson

National Weather Service
Techniques Development Laboratory

Predictand Definitions

Daytime Max – 7 AM to 7 PM Local Standard Time.

Nighttime Min – 7 PM to 8 AM Local Standard Time.

Calculated from METAR Observations

Temperature – 2 meter shelter; every 6 hours.

Dewpoint – 2 meter shelter; every 6 hours.

Forecast Projections – 18 to 192 hours.

Predictors Offered

Model Predictors

- Temperatures
- Dewpoints
- Thicknesses
- U-V Winds/Wind Speed
- Vertical Velocities
- Mean RH
- Model Precipitation
- Lapse Rates

Geoclimatic Predictors

- Sin/Cos (DOY)
- Sin/Cos (2*DOY)

Observed Predictors

- 06 UTC Temperature
- 06 UTC Dewpoint

Key Predictors

- 2-meter (max) or 1000 mb (min) Temperature
- Low Level Thicknesses (1000-850mb, 1000-700mb)
- 1000 mb Dewpoint (min)
- 1000-500mb Mean Relative Humidity
- Geoclimatic Predictors

Developmental Sample

Dependent Sample:

- Cool Season (October - March):
 - 1992-97 MRF Reanalysis Forecast Data
 - 1997-98 and 1998-99 MRF Data
- Warm Season (April - September):
 - 1992-96 MRF Reanalysis Forecast Data
 - 1997, 1998 (except 6/16-7/21) and 1999 MRF Data

Independent Sample:

- April through July of 1999 warm season
- Last 15 days of each month in 98/99 cool season

Verification

- Mean Absolute Error
- Mean Algebraic Error (Bias)

Daytime Max/Nighttime Min

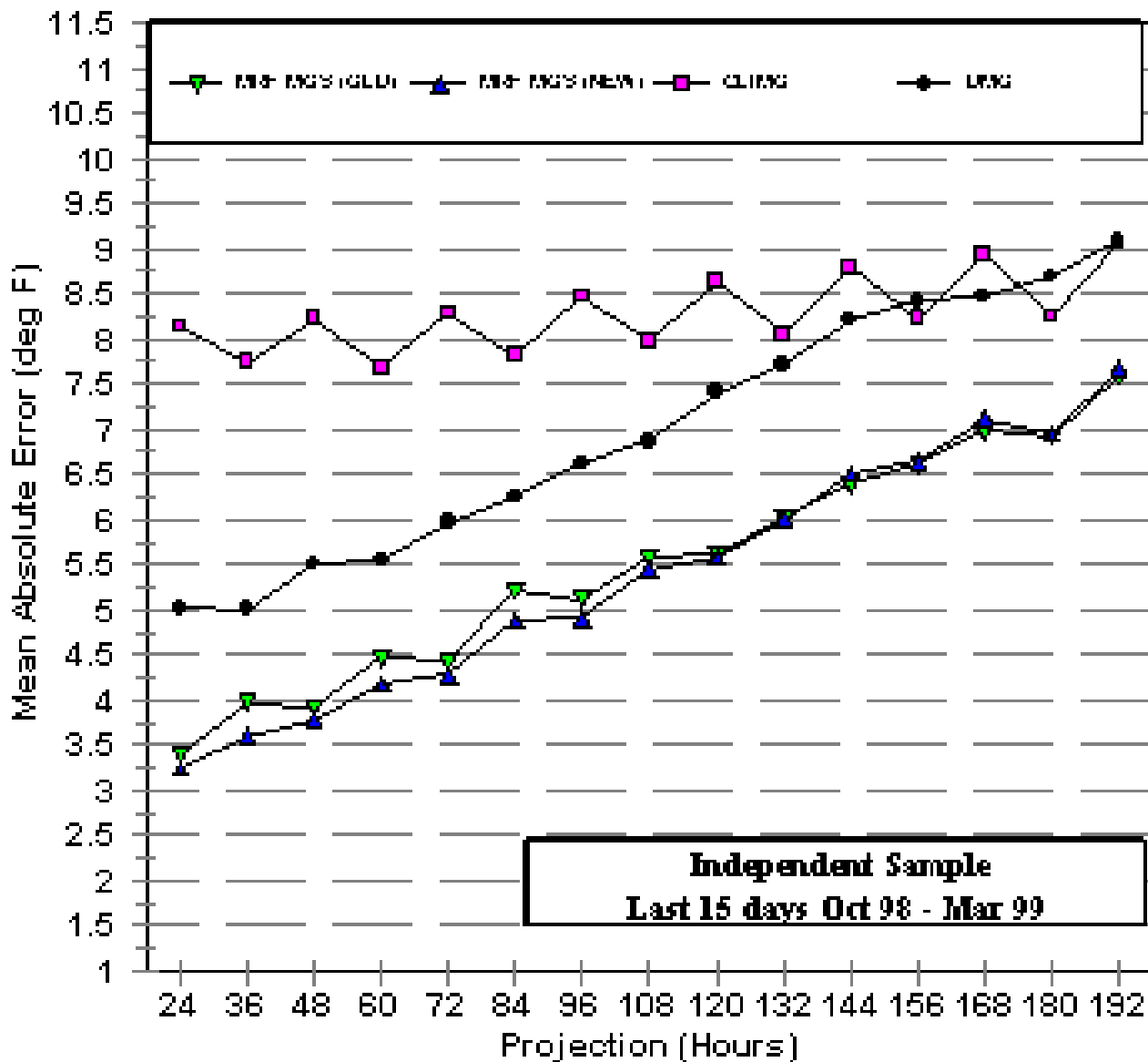
- Verified versus MRF MOS (OLD), DMO and Climo

Temperature/Dewpoint

- New Elements
- Verified versus DMO and Climo

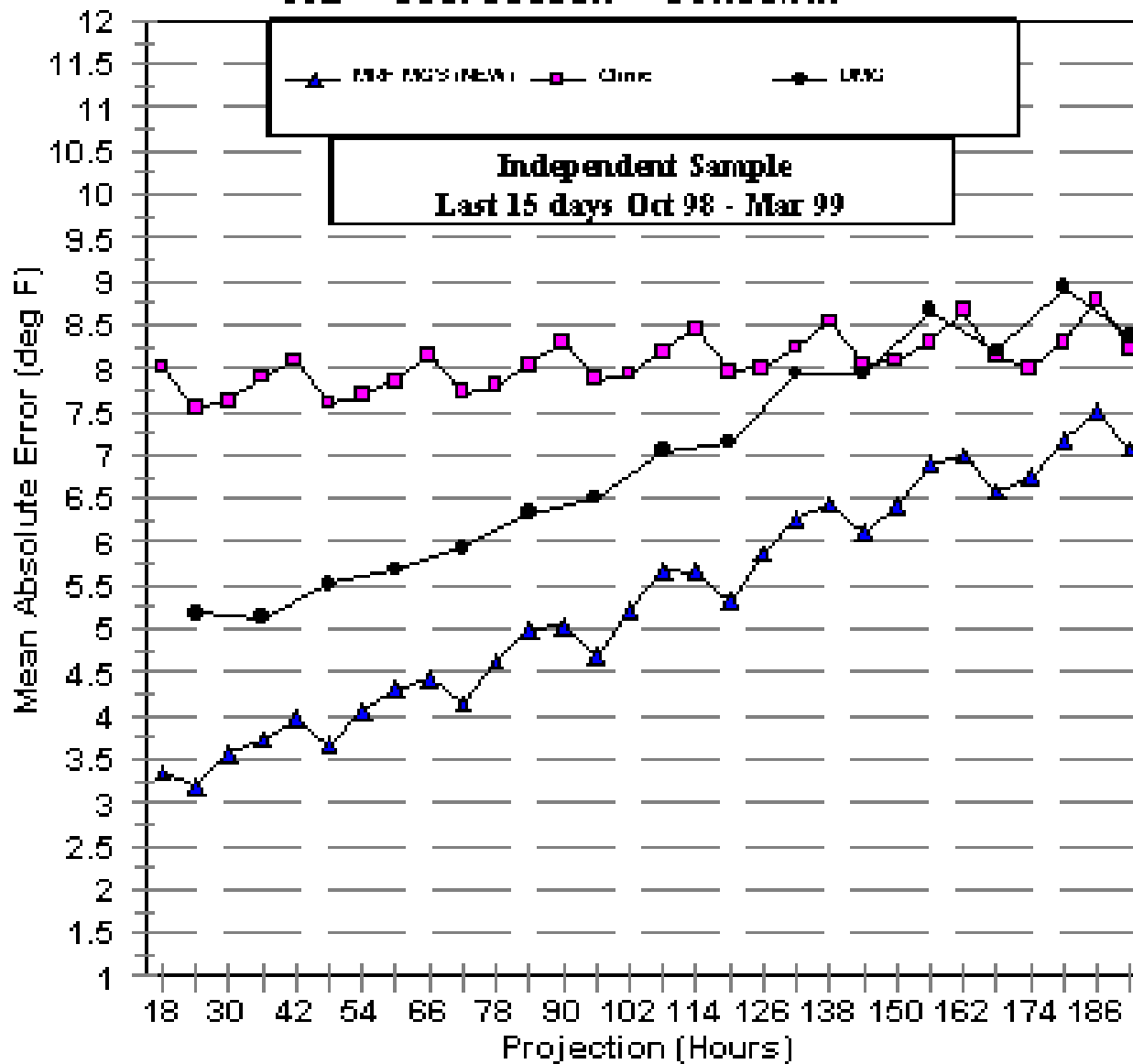
MRF Max/Min Temperature -- MAE

00Z -- Cool Season -- CONUS/AK



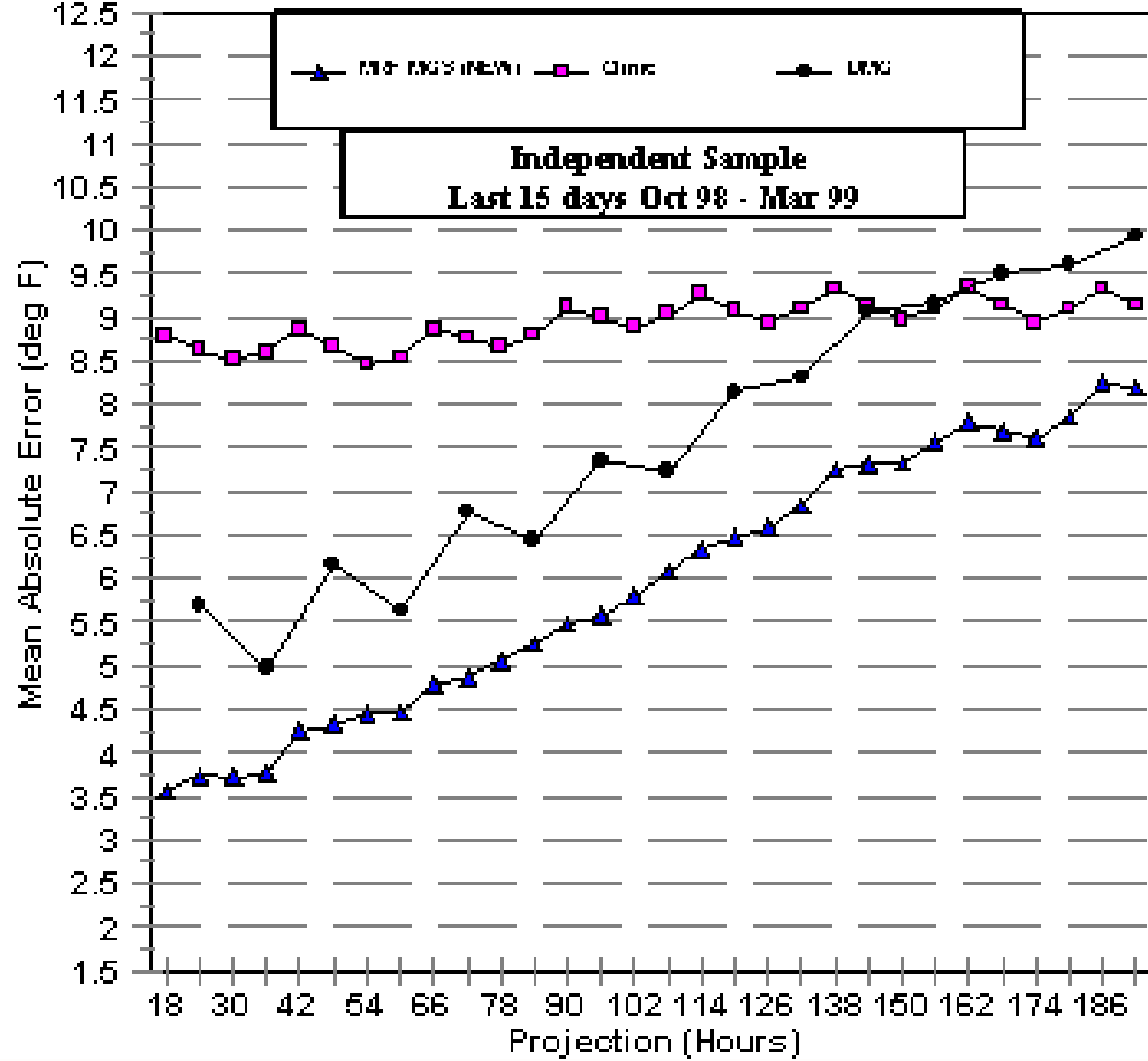
MRF Temperature -- MAE

00Z -- Cool Season -- CONUS/AK



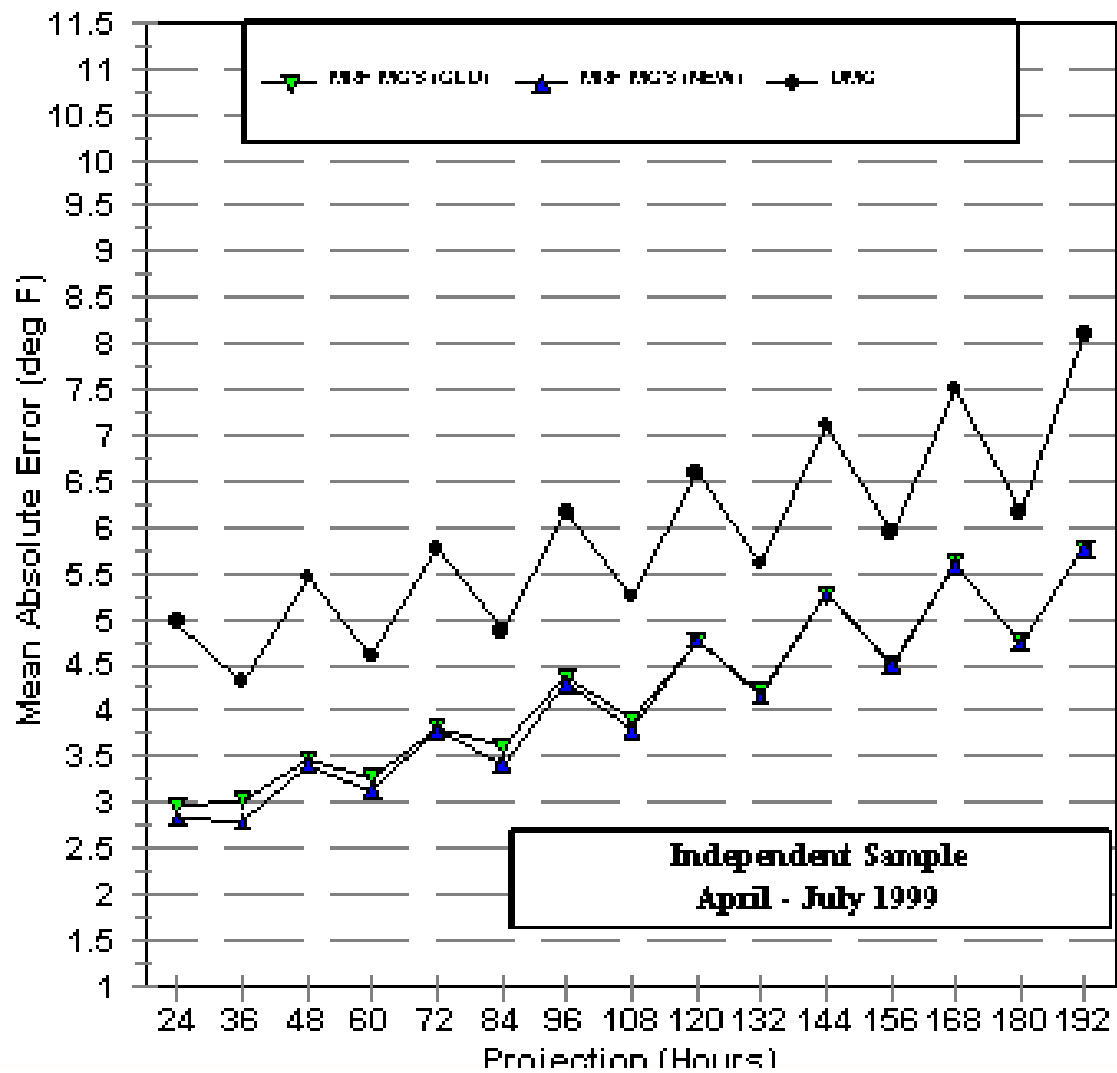
MRF Dewpoint -- MAE

00Z -- Cool Season -- CONUS/AK



MRF Max/Min Temperature -- MAE

00Z -- Warm Season -- CONUS/AK



Conclusions

Daytime Max and Nighttime Min

- More accurate the old MRF MOS out to 108 hours
- Comparable in skill out to 192 hours

Temperature and Dewpoint

- Improved significantly over DMO and CLIMO

Additional Results

- <http://www.nws.noaa.gov/tdl/synop>