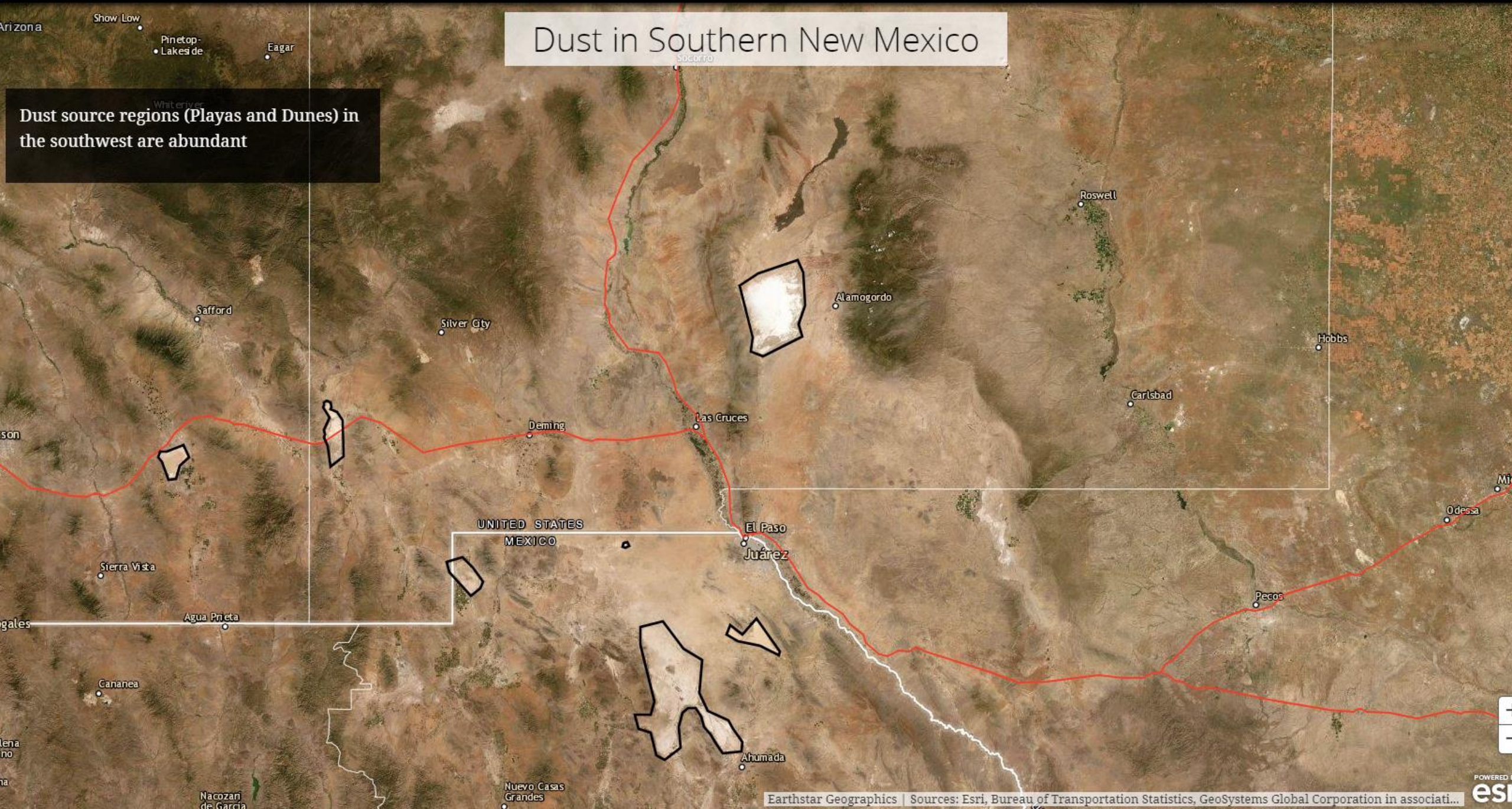


ArcGIS Online Dashboard for Dust

Eleanor Dhuyvetter | National Weather Service Office | El Paso Texas

Dust in Southern New Mexico

Dust source regions (Playas and Dunes) in the southwest are abundant



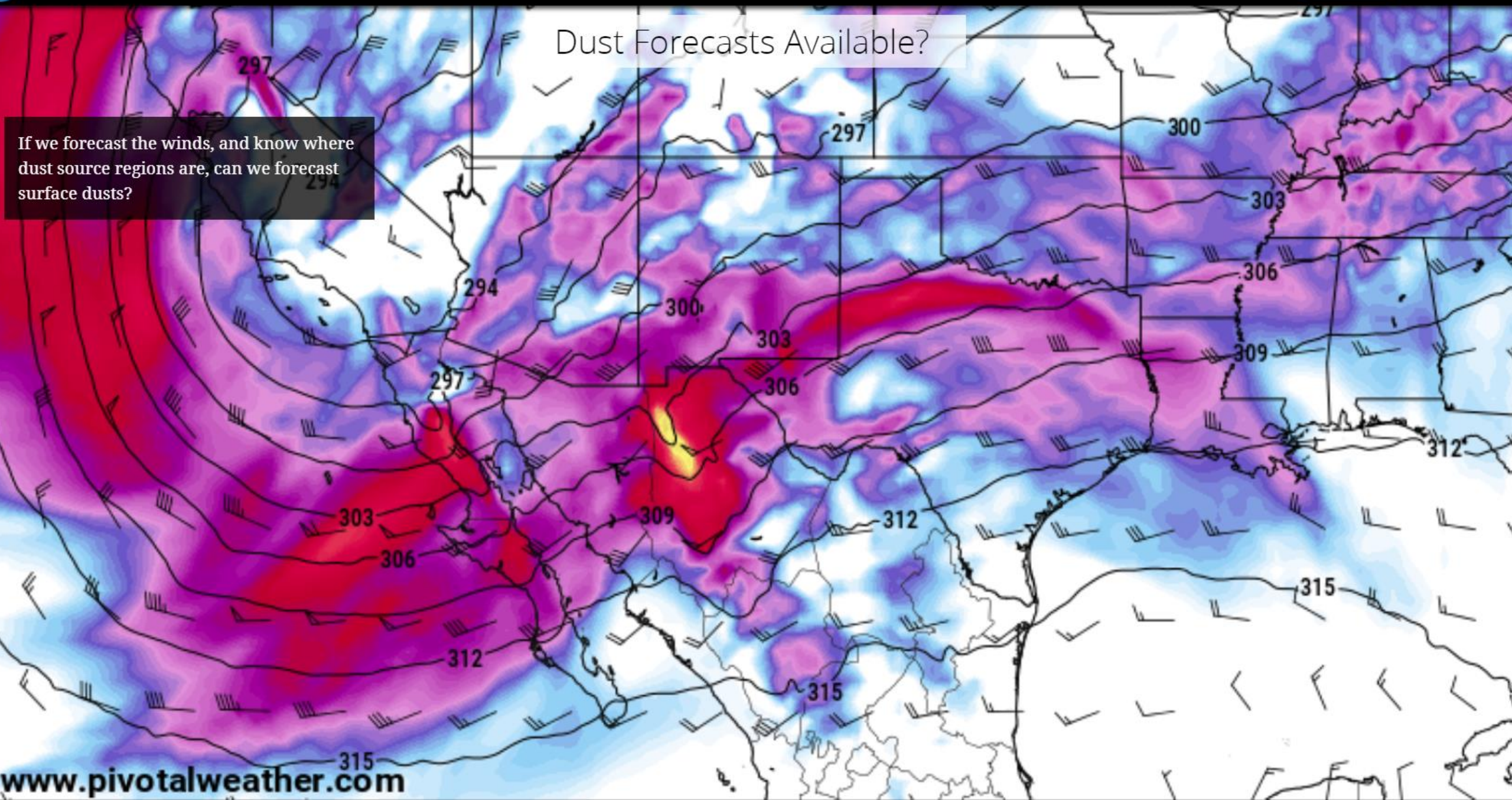
Dust in Southern New Mexico

The Lordsburg Playa is a major contribution of dust along I-10 in New Mexico



Dust Forecasts Available?

If we forecast the winds, and know where dust source regions are, can we forecast surface dusts?

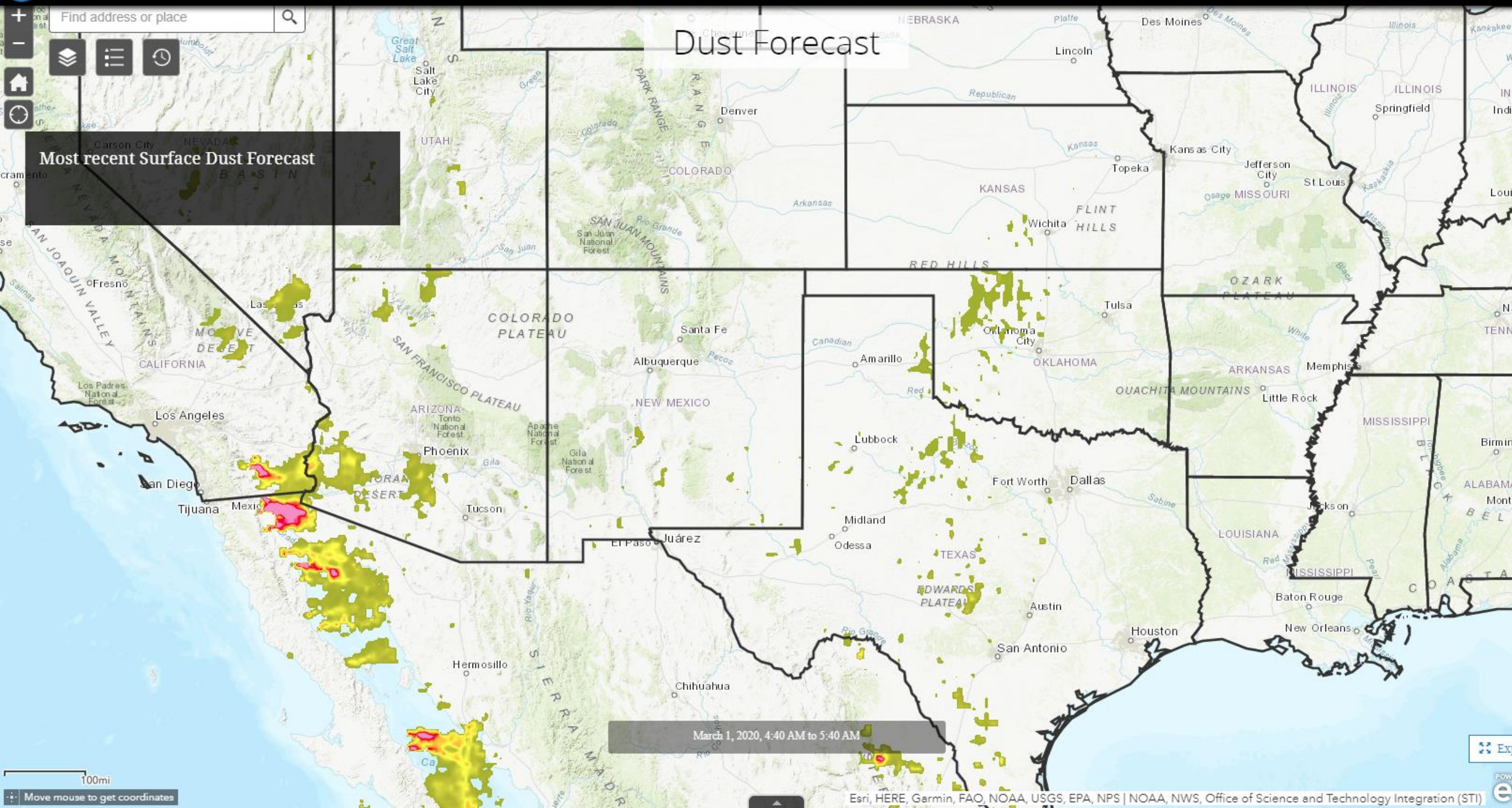


Find address or place

Map navigation controls: Home, Layers, Full Screen, Refresh, etc.

Dust Forecast

Most recent Surface Dust Forecast



March 1, 2020, 4:40 AM to 5:40 AM

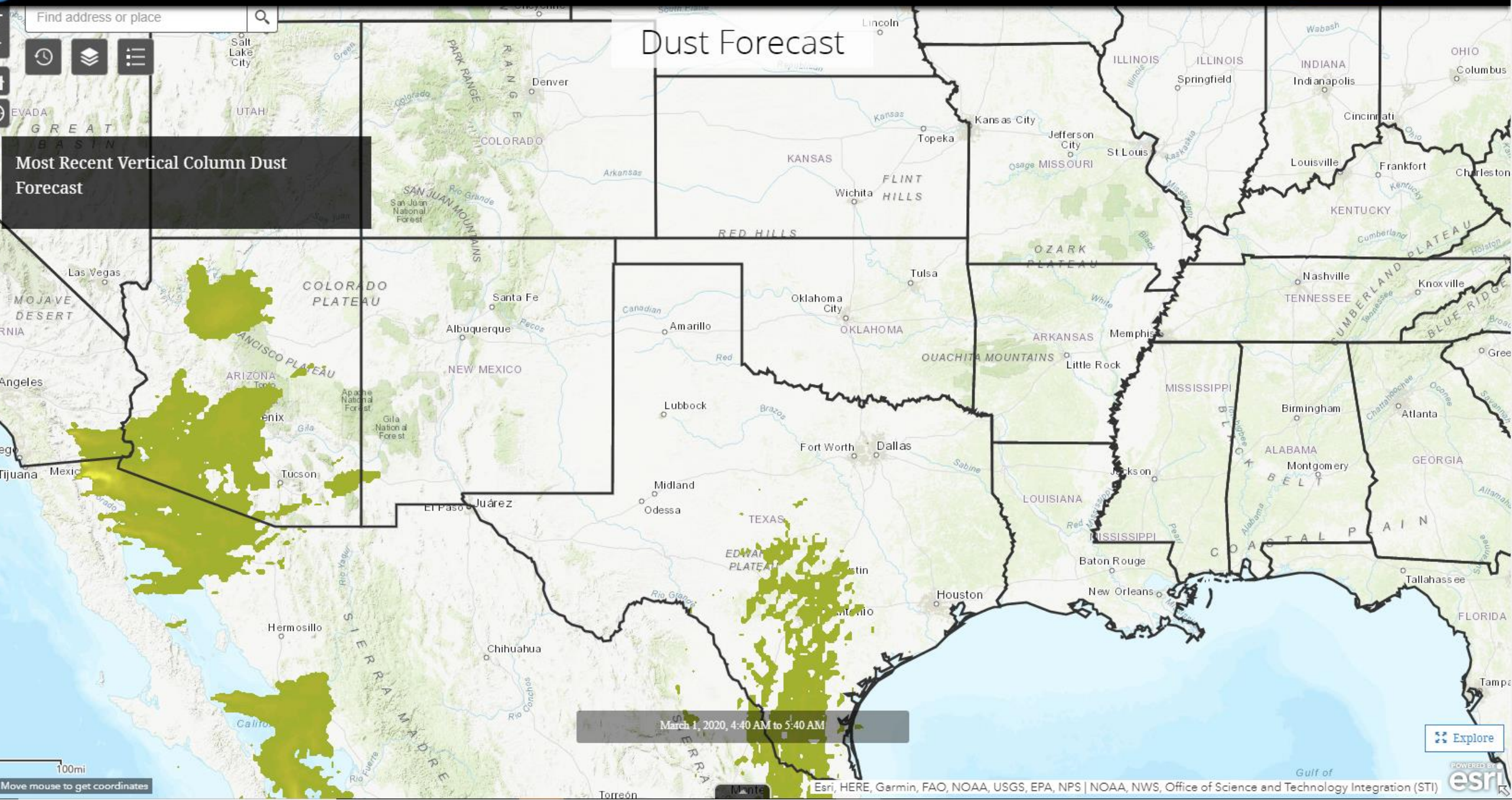
100mi
Move mouse to get coordinates

Find address or place



Dust Forecast

Most Recent Vertical Column Dust Forecast

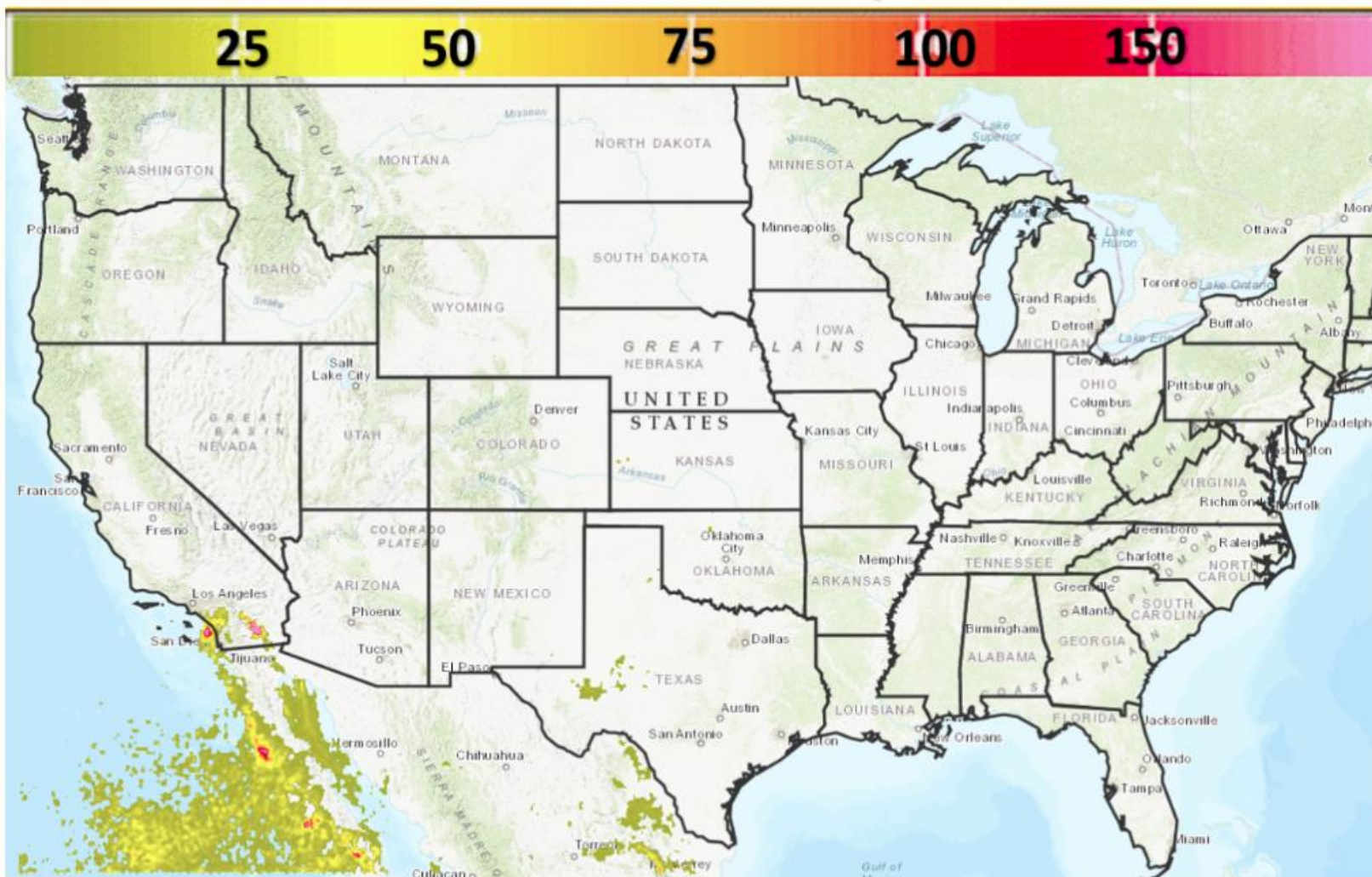


March 1, 2020, 4:40 AM to 5:40 AM

100mi
Move mouse to get coordinates

Explore

National Weather Service Air Quality – Dust Forecast



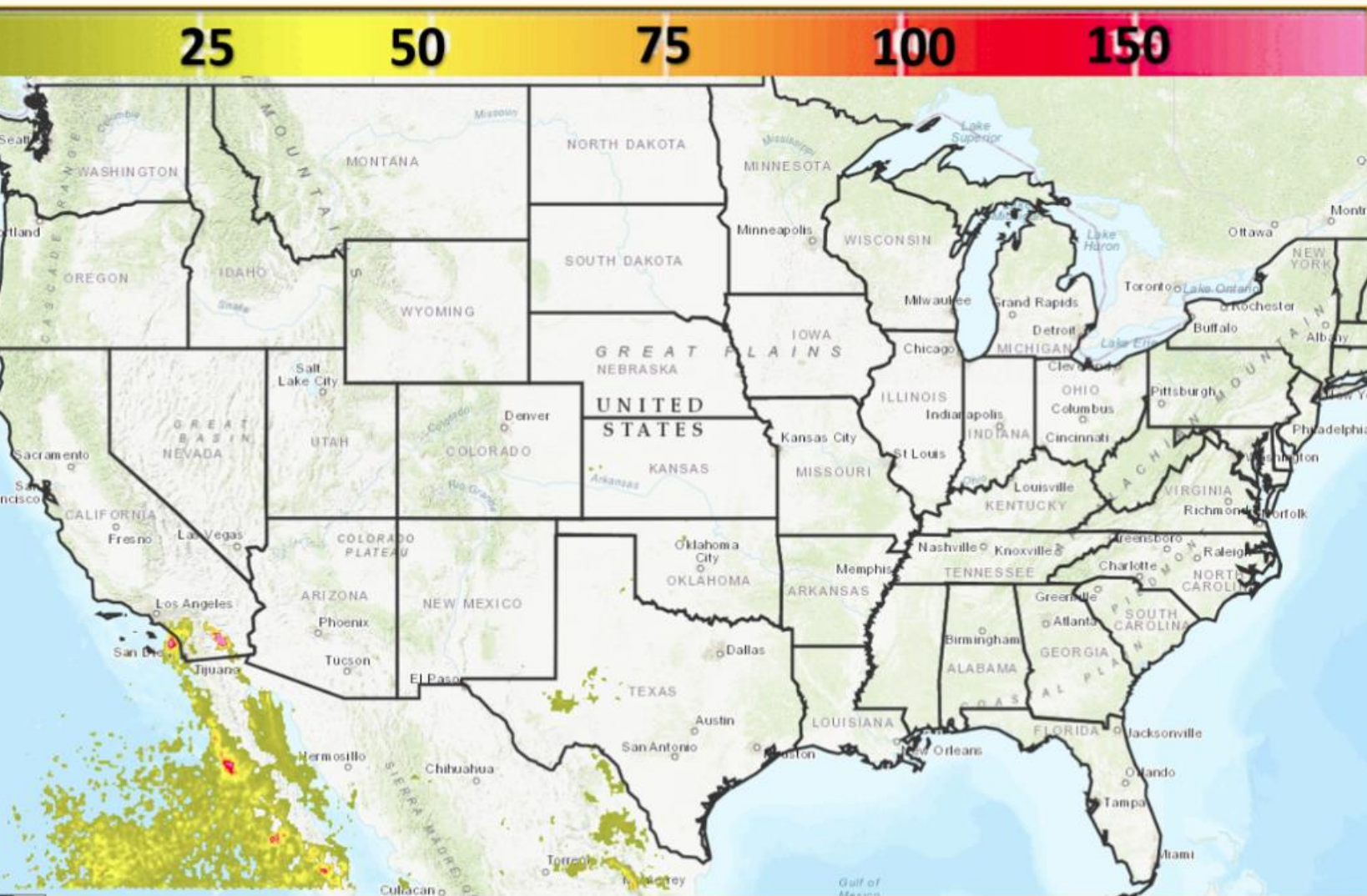
Predictions of wind driven dust emitted where surface winds exceed thresholds over source regions

MODIS + soil moisture used for source region detection and monitoring

HYSPLIT model used for transport, deposition, and dispersion

Air Quality – Dust Forecast

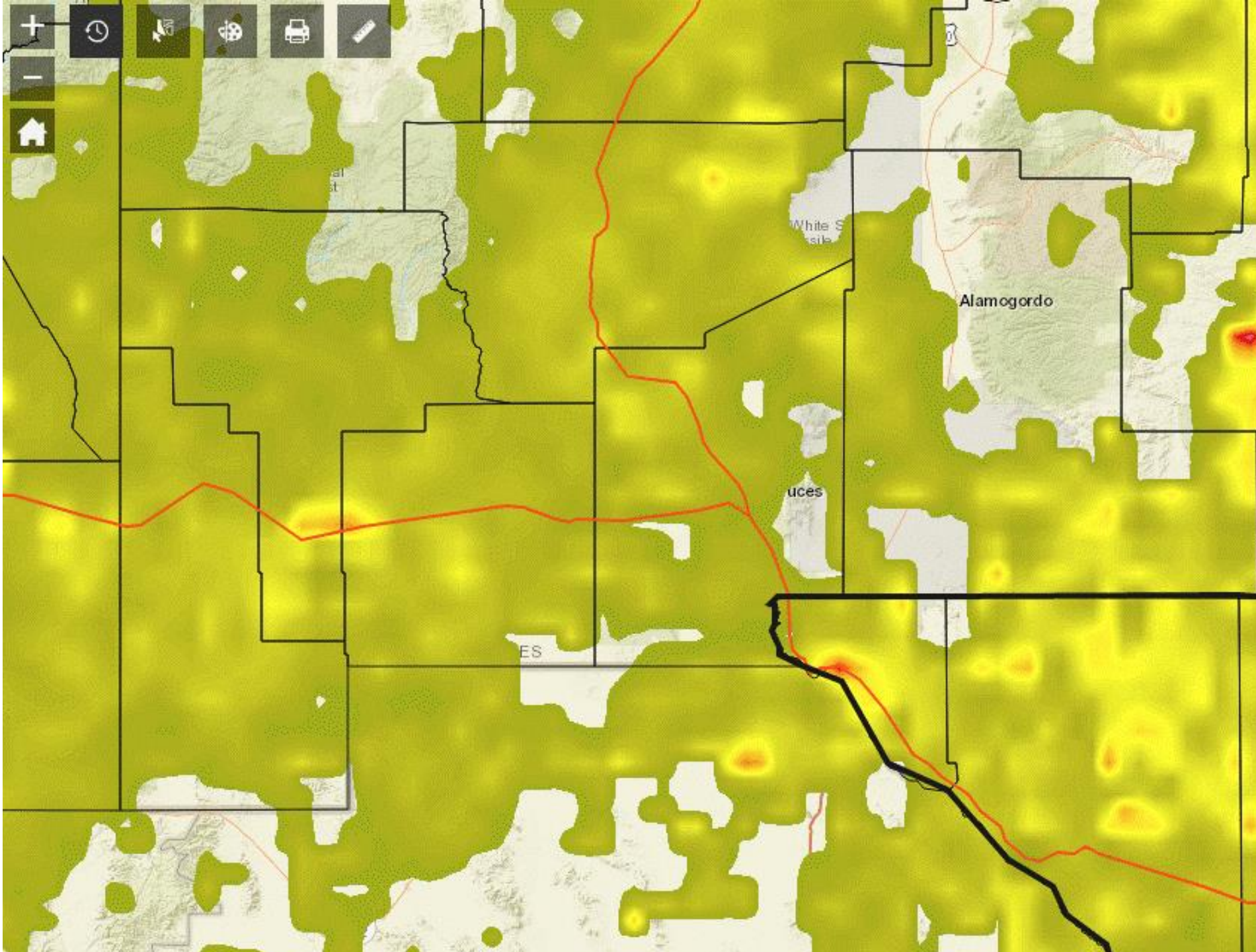
Limitations

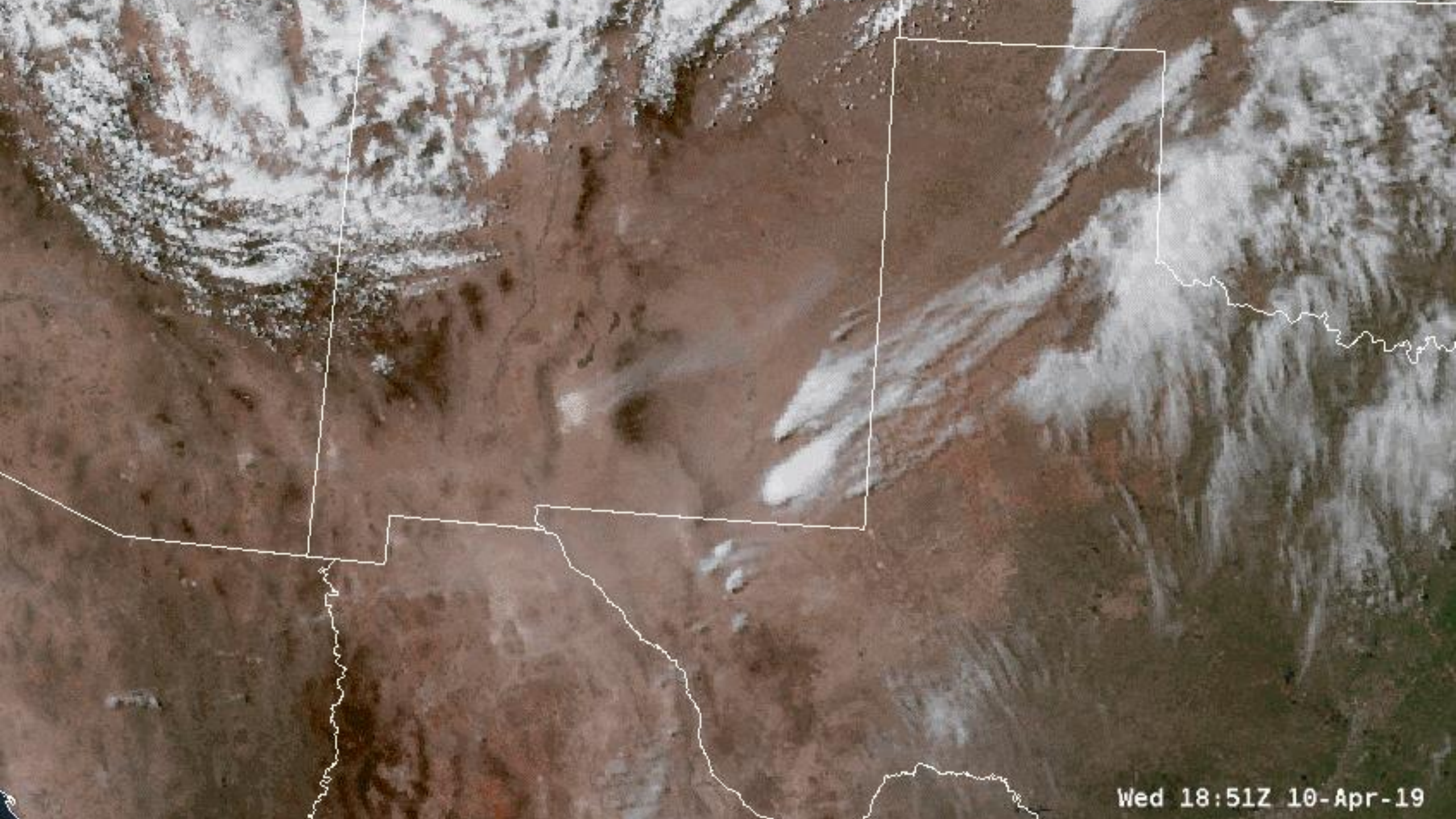


Updated only 2 times a day

Does not forecast dust storms originated from convective thunderstorms

Local effects such as activity on playas and other source regions are missed





Wed 18:51Z 10-Apr-19

**Can I get these NWS forecasts
and monitoring tools all in one
place?**

List of Current Warnings

No Warnings At This Time

Last update: a few seconds ago

Dust Storm Warnings

No Warnings At This Time

Last update: a few seconds ago

Map Legend

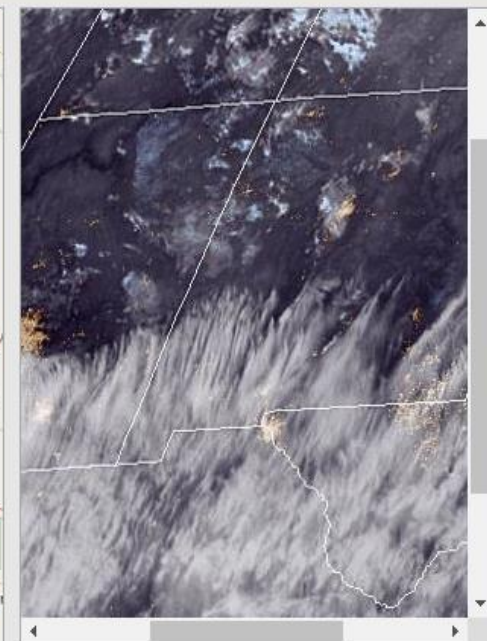
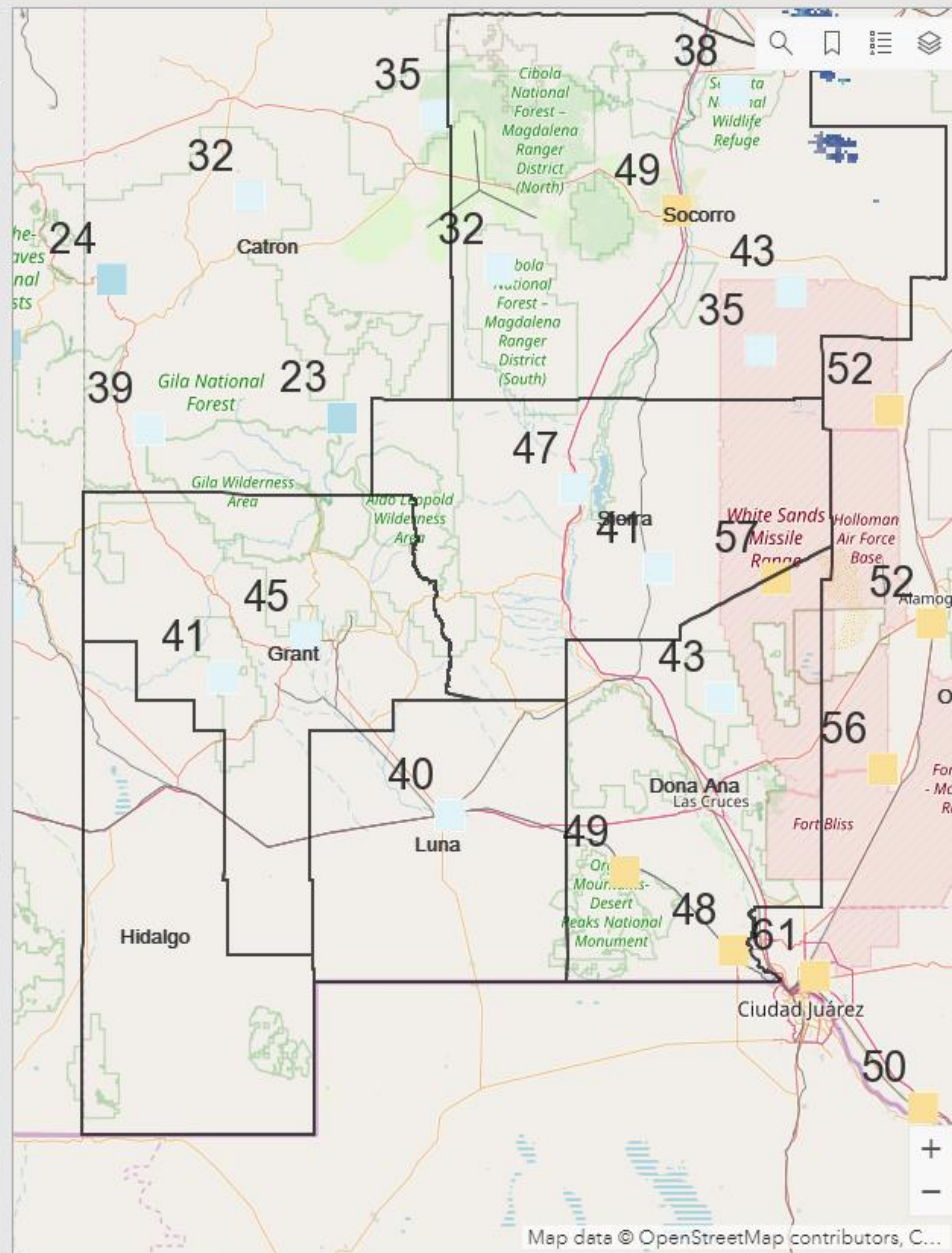
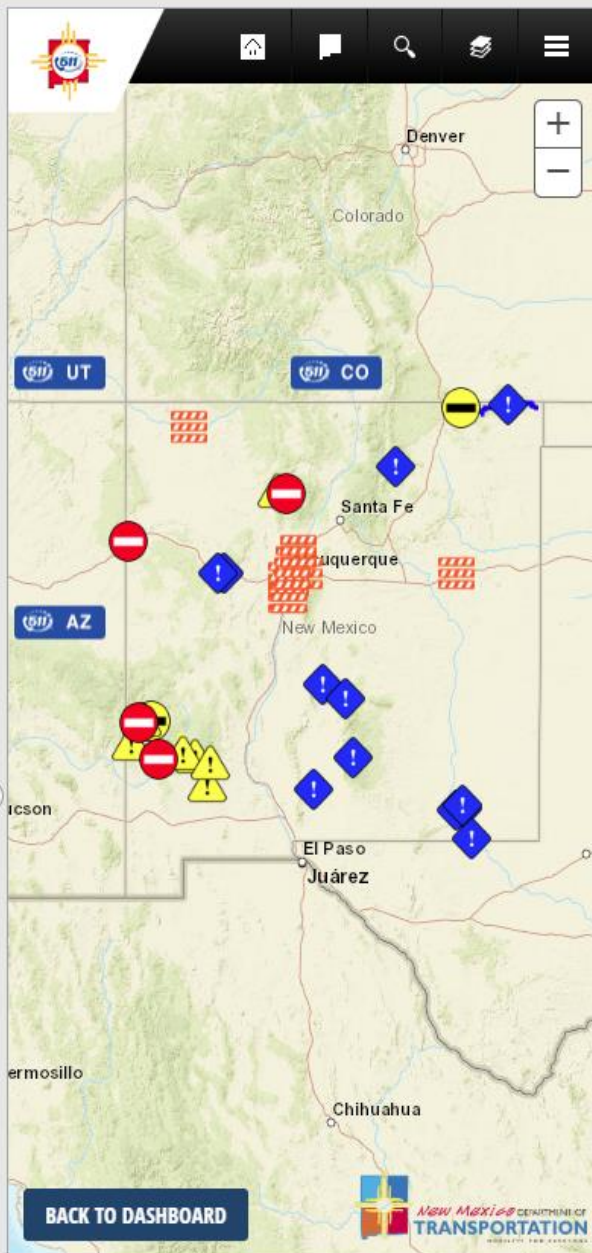
Storm Reports



NOAA's National Weather Service County Warning Areas

USA Counties

Dona Ana

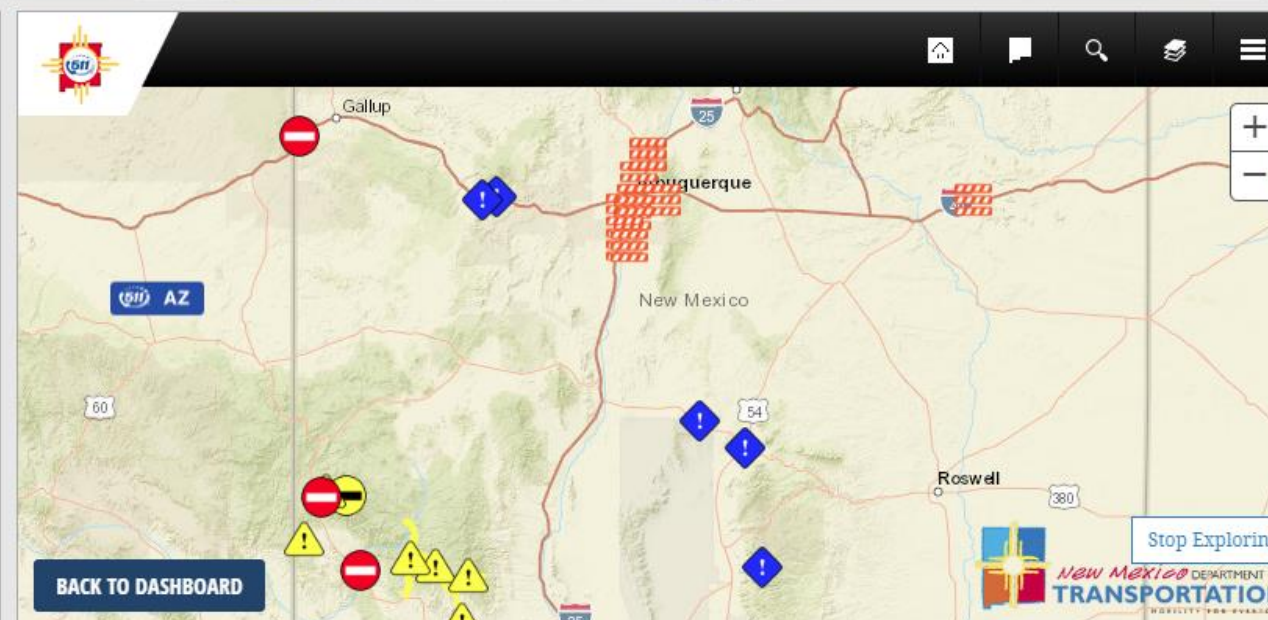
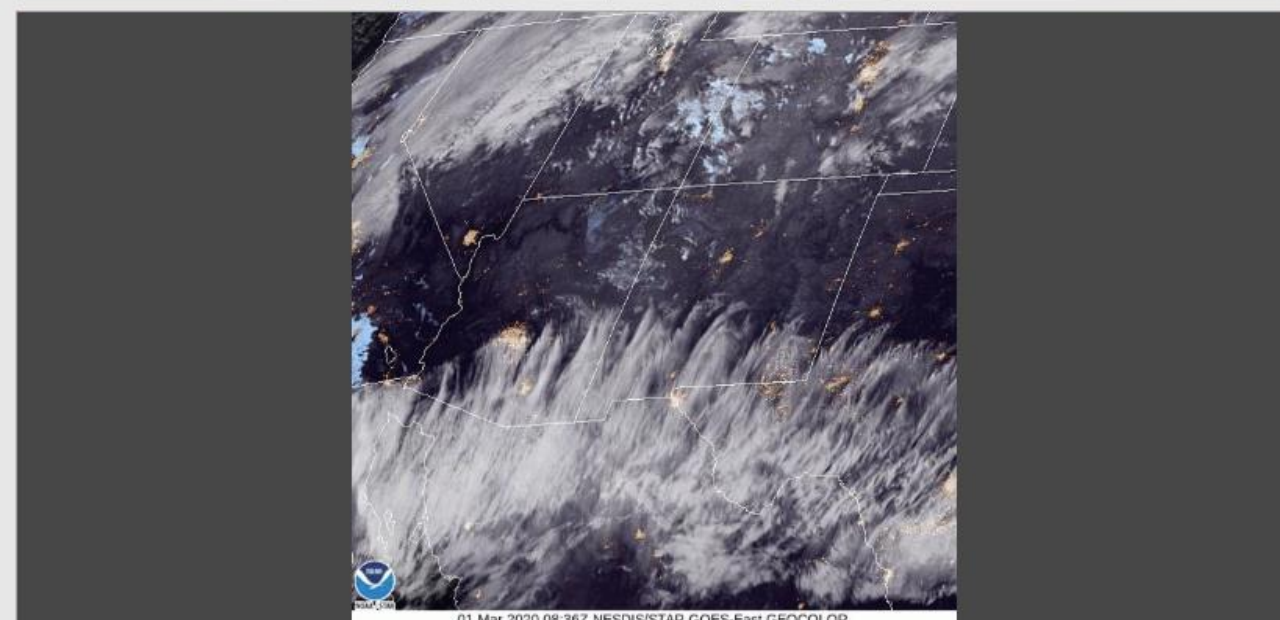
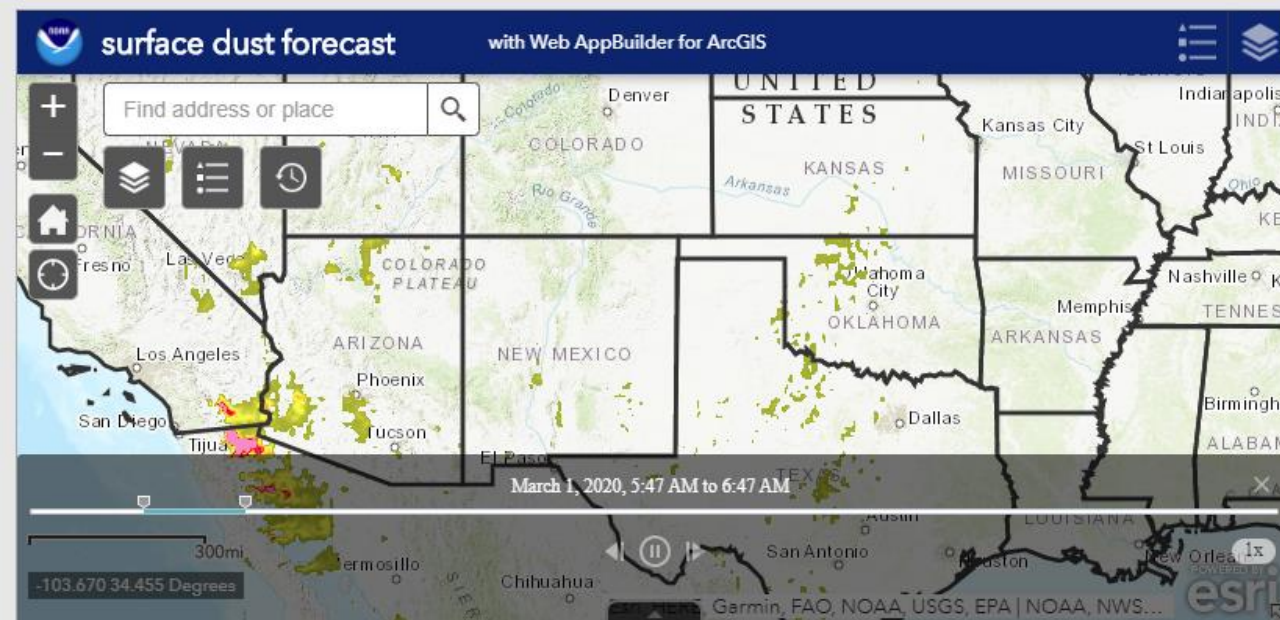


Storm Reports

No Data

Stop Exploring

Last update: a few seconds ago





Thank you!
Questions? Please email eleanor.dhuyvetter@noaa.gov