

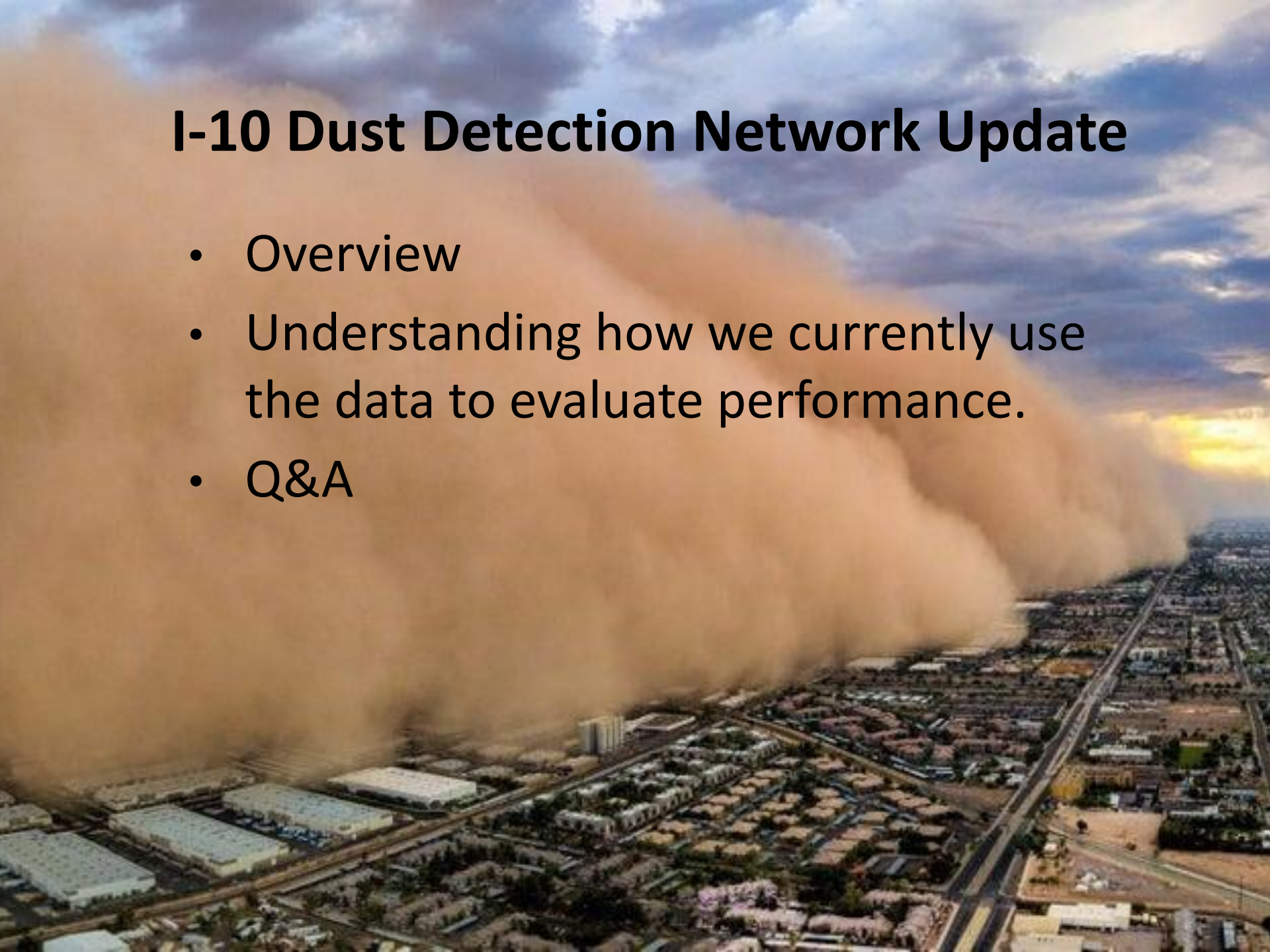
I-10 Dust Detection Network Update



Kevin Duby and Joseph Jones
Arizona Department of Transportation
March 24, 2021
kduby@azdot.gov and jjones2@azdot.gov

I-10 Dust Detection Network Update

- Overview
- Understanding how we currently use the data to evaluate performance.
- Q&A



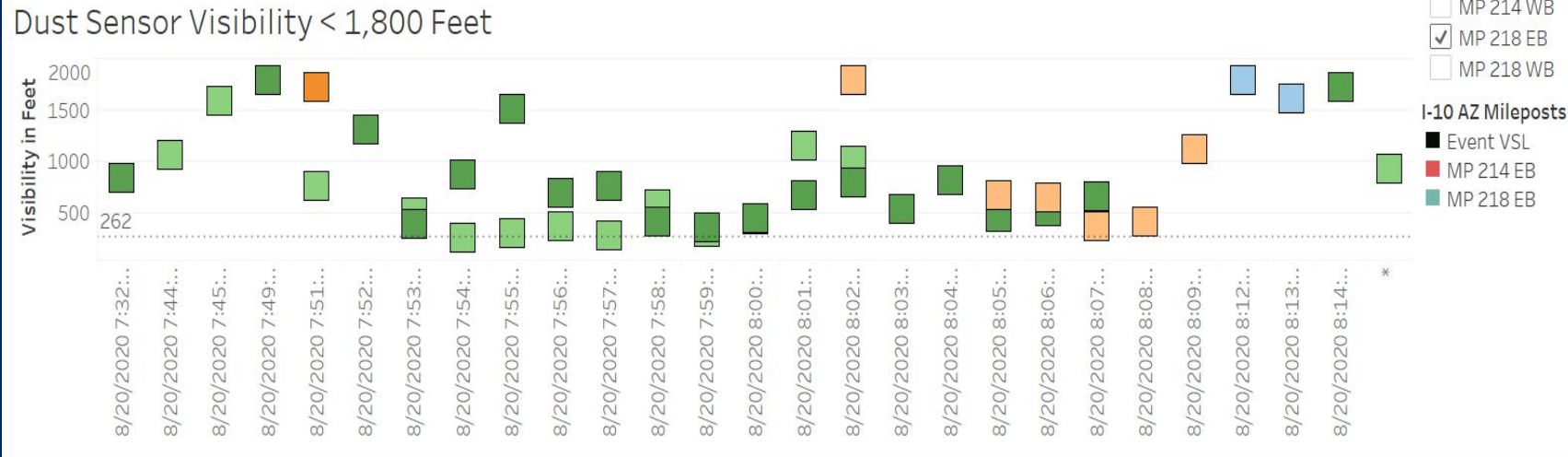
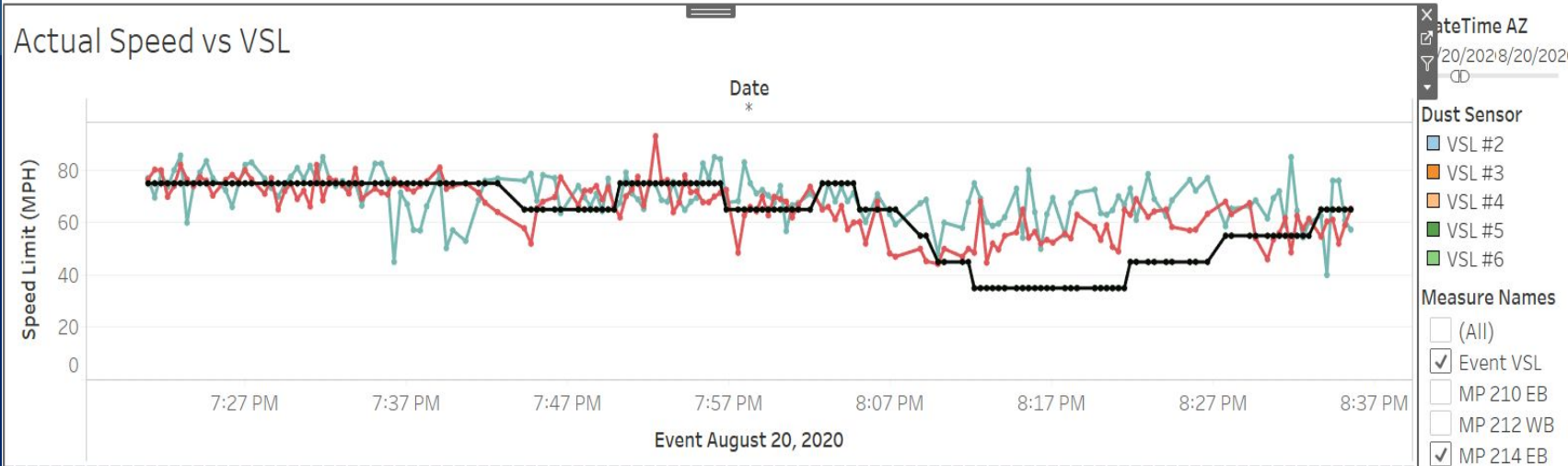
What is a Dust Detection System?

- Radar Detects Approaching Storm
- Sensors Measure Visibility
- Software Determines Appropriate Speed
- Software Sends Messages to Variable Speed Limit(VSL) signs and Dynamic Message Signs(DMS)
- Closed Circuit TV(CCTV) Verifies Conditions
- Pavement Sensors Measure Speed

I-10 Dust Detection Network Update

- System is less than a year old.
- Working as expected.
- Still trying to understand the dynamics of the system.

Dust Detection Evaluation Tools



Dust Detection Tool

Next Steps:

- Plans to have operability metrics such as uptime.
- Have after action reviews.
- Improving data presentation.



I-10 Dust Detection Network Update

Questions?

